

## ‘LN20AC’ - Intelligent LN2 Generators

‘LN20AC’ is the latest ‘water cooled’ Liquid Nitrogen Generator from SLS Products.

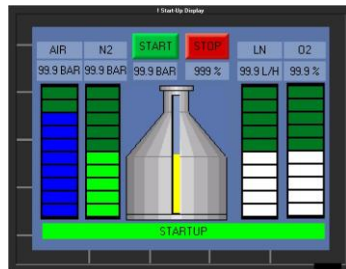
Utilising the reliable and efficient PSA technique of separating Nitrogen and Oxygen is used to produce high quality Nitrogen Gas which is then liquefied using our powerful cooling system.

The liquid nitrogen is stored within a suitable sized vacuum insulated tank and the product can be dispensed using a 1.5 metre vacuum insulated hose provided. Other options of dispense methods are available on request.



### Features

- Air cooling, no water chiller required.
- Internal air compressor.
- Nitrogen produced using our own PSA nitrogen generator.
- LN2 at 99% purity.
- Nitrogen injection system for pre-cooling of gas prior to liquefaction.
- 50 Litre LN2 storage dewar
- All cryogenic parts are vacuum insulated.
- Colour touch screen control.
- Small footprint.
- Low noise.



TOUCH SCREEN  
CONTROLLER

### Options

- Internet connectivity
- SMS text messaging
- Vacuum hoses available
- Foot pedal dispensing
- Additional dewars available

The SLS Lab Pro Cryogenics LN20AC liquid nitrogen generator is your reliable and efficient on-site plug and produce cryogenic solution. With a small footprint, low power consumption and no need for cooling water or water chiller makes the LN20AC one of the best solutions available on the market. With integrated cooling fans can operate with air cooling up to +32°C ambient temperatures making it suitable to operate in most parts of the World. For higher ambient temperatures up to +52°C we recommend the LN20 water cooled system. Simply connect the power and press start for the machine to automatically produce liquid nitrogen when needed. An intelligent level sensor system means you can select the liquid level stop and start using the touch screen controller so you always have enough LN2.

### Specifications

Liquid nitrogen production (l/hr)	0.84
Liquid nitrogen purity	>99% (<1.0% O2)
Liquid nitrogen tank volume (litres)	50
Liquid nitrogen Pressure (bar g)	Up to 1.5*
Power consumption (Kw)	3.0
Power supply (1Ø + neutral and earth)	200-240 50/60Hz
LN2 enclosure foot print (on wheels)	1.4m x 0.65m
LN2 enclosure height	1.75m
LN2 enclosure weight	350Kg
Noise level	<60 dBA

LN2 production rate at +25°C and <2,000 metres altitude and at 50Hz (for 60Hz add 20% production rate). For higher altitudes please consult Noblegen for advice.

\*Higher pressures available on request up to 4 bar.

### Options



Cryogenic safety equipment



O2 depletion alarm



Cryogenic hoses