

'LABGAS+' - Intelligent Gas Generators

'LABGAS+' , model NG6TF is the latest Nitrogen PSAF Laboratory Gas Generators from SLS Lab Pro.

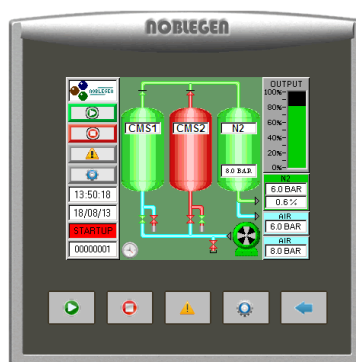
Utilising the reliable and efficient PSA technique of separating Nitrogen and Oxygen is used to produce 2 streams of high quality nitrogen gas specifically to meet the demands of the HPLC Agilent 6460 Instrument.

The generator is controlled using the latest in HMI touch screen technology to display the process in real-time, inlet / outlet pressures, trend graphs and much more...



Features

- Internal oil-free air compressor or without compressor models
- Compact and quiet design
- Auto-run facility (timer)
- Energy saving mode
- Outlet flow indicator (% flow)
- Trend graphs into MS Excel
- Alarms with help menu
- Audible service alarm sounder



Colour HMI Touch Screen

Applications

- HPLC Agilent 6460

LABGAS+ model NG6DF Dual Flow Nitrogen Generator from SLS Lab Pro is your reliable and efficient alternative to conventional high pressure cylinder and liquid gas supplies. Taking away the on-going costs, safety considerations and transportation of traditional gas supplies, the 'LABGAS+' on-site nitrogen systems are some of the most advanced and intelligent available. The control system gives the user all the information necessary to ensure an efficient and consistent supply of gas is always available. From the process to flow and alarms, including auto-start / stop function, Trend graphs, service alarm and service records page, there is simply no other laboratory nitrogen system quite like LABGAS+.

The NG6DF is one of the most economical 'dual flow' nitrogen generators on the market for both purchase price and on-going running / maintenance costs. Together with our unrivalled experience and knowledge of nitrogen gas generators with 1000's running world-wide supported by our national and international partners.

Nitrogen Outlet Flowrate - NI/min vs Oxygen Concentration

Model	LP N2 pressure	LP N2 flow	LP N2 purity	HP N2 pressure	HP N2 flow	HP N2 purity	Dims -0	Dims -1
NG6DF	101.5	35.0	99%	43.5	0.2	99.999%	Size 1	Size 1

Specification based on 9bar g (130psig) air inlet pressure @ 20°-25°C (68°-77°F) ambient air temperature. For inlet pressures and ambient air temperature outside these conditions please contact your SLS Sales Representative.

Specifications

Ambient Temp Range	5-40 °C (41-104 °F)
Certification	ISO9001:2008
Start-up time	<30 mins
Nitrogen Outlet Particles	<0.01 micron
Power supply	230V A.C. single phase 50Hz (1.5Kw)
Socket Inlet	IEC type C14 (fused) 6.3A max
Air Inlet Requirement (-0)	9 bar g (130 psig) – 87 LPM
Inlet / Outlet Connections	1/4" BSPP x 2
Process Pipe-work	Copper pipe

Dimensions & Weights

Enclosure	Length	Width	Height	-0 Weight	-1 Weight
Size 1	600	600	1,300	120	150

Note: Dimensions in mm, weights in kgs.

