



Pallflex® Filters Emfab™ and Tissuquartz™ Filters

Emfab – preferred filters for diesel exhaust and stack emission testing

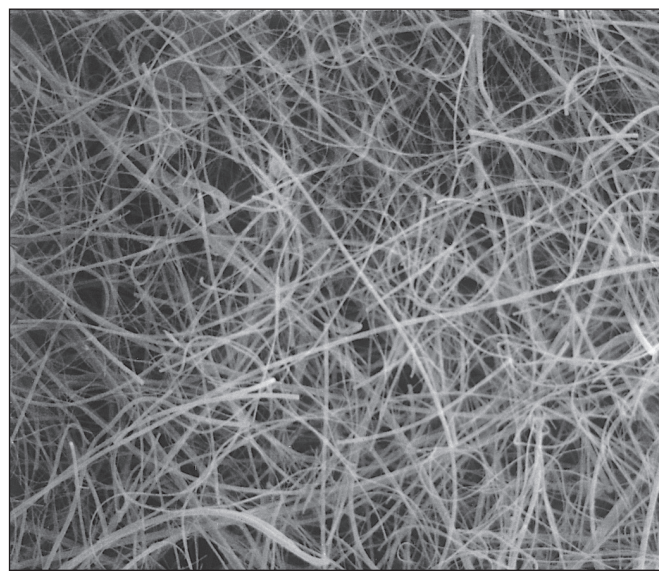
Pure borosilicate glass microfibers reinforced with woven glass cloth and bonded with PTFE

- Withstands folding for weighing and transport
- Every filter flushed with DI water to remove water-soluble residue
- Low moisture pickup eliminates lengthy desiccations
- Low air resistance

Tissuquartz – uniquely designed for air monitoring in high temperatures and aggressive atmospheres

Binder-free pure quartz

- Heat treated for reduction of trace organics and superior chemical purity
- High temperature use up to 1093 °C (2000 °F)
- High flow rate and filtration efficiency



- Tissuquartz Filters – High temperature use for analysis of acidic gases and stack sampling aerosols. Ultra-pure soft water processing reduces residual ion content.

Applications

- Emfab Filters – Low air resistance for use in critical aerosol sampling tests that demand filter purity and non-hygroscopic properties such as diesel exhaust, stack emission control, and ambient air monitoring for particulate concentration.

Specifications

| Description | Emfab Filters | Tissuquartz Filters |
|---|---|---|
| Filter Media | Borosilicate microfibers reinforced with woven glass cloth and bonded with PTFE | Pure quartz, no binder |
| Diameter | 12 – 142 mm [and 8 x 10 in. (20 x 25 cm)] | 25 – 142 mm [and 8 x 10 in. (20 x 25 cm)] |
| Typical Thickness | 178 µm (7 mils) | 432 µm (17 mils) |
| Typical Filter Weight | 5.0 mg/cm ² | 5.8 mg/cm ² |
| Typical Water Flow Rate at 0.35 bar (5 psi) | 32 mL/min/cm ² | 220 mL/min/cm ² |
| Typical Air Flow Rate at 0.7 bar (10 psi) | 68 L/min/cm ² | 73 L/min/cm ² |
| Maximum Operating Temperature – Air | 260 °C (500 °F) | 1093 °C (2000 °F) |
| Typical Aerosol Retention* | 99.95% | 99.90% |
| pH in Boiled Water Extract | Not available | 6.5 – 7.5 |

*Following ASTM D 2986-95A 0.3 µm (DOP) at 32 L/min/100 cm² filter media

Ordering Information

Tissuquartz™ Filters, 2500 QAT-UP

Heat Treated

| Part Number | Description | Pkg |
|-------------|-------------|---------|
| 7200 | 25 mm | 100/pkg |
| 7201 | 37 mm | 25/pkg |
| 7202 | 47 mm | 25/pkg |
| 7203 | 90 mm | 25/pkg |
| 7204 | 8"x10" | 25/pkg |
| 7205 | 82.6 mm | 25/pkg |
| 7206 | 85 mm | 25/pkg |
| 7207 | 102 mm | 25/pkg |
| 7250 | 110 mm | 25/pkg |

Die Cut

| | | |
|-------|---------|---------|
| 7200D | 25 mm | 100/pkg |
| 7202D | 47 mm | 25/pkg |
| 7205D | 82.6 mm | 25/pkg |

Non- Heat Treated

| | | |
|------|-------|--------|
| 7194 | 47 mm | 25/pkg |
|------|-------|--------|

Emfab™ Filters

| Part Number | Description | Pkg |
|-------------|--------------------|---------|
| 7217 | TX40HI20WW 37 mm | 100/pkg |
| 7218 | TX40HI20WW 81 mm | 100/pkg |
| 7219 | TX40HI20WW 25 mm | 100/pkg |
| 7221 | TX40HI20WW 47mm | 100/pkg |
| 7222 | TX40HI20WW 70 mm | 100/pkg |
| 7223 | TX40HI20WW 90 mm | 100/pkg |
| 7224 | TX40HI20WW 8"x10" | 100/pkg |
| 7225 | TX40HI20WW 110 mm | 100/pkg |
| 7228 | TX40HI20WW 10 mm | 100/pkg |
| 7234 | TX40HI20WW 85 mm | 100/pkg |
| 7253 | TX40HI20WW 82.6 mm | 100/pkg |

Complementary Products

Filter Holders

| Part Number | Description | Pkg |
|-------------|---|-------|
| 1107 | 25 mm Open-face filter holder | 6/pkg |
| 1219 | 37 mm Open-face aluminum filter holder | 1/pkg |
| 1220 | 47 mm Open-face aluminum filter holder | 1/pkg |
| 2220 | 47 mm In-line stainless steel filter holder | 1/pkg |



Corporate Headquarters
25 Harbor Park Drive
Port Washington, New York 11050

Filtration. Separation. Solution.SM

Visit us on the Web at www.pall.com/lab

E-mail us at LabCustomerSupport@pall.com

© 2020 Pall Corporation. Pall, PALL, Emfab, Pallflex, and Tissuquartz are trademarks of Pall Corporation. ® indicates a trademark registered in the USA. Filtration. Separation. Solution. is a service mark of Pall Corporation.