

IKA®

Shakers



designed
to work perfectly

3D Shakers | World in motion!

For over a century, IKA® has been leading the way with innovative technologies and applications in the field of laboratory, analytical and process equipment.

In 1925, IKA® first produced the conventional shaker and displayed this entire product line at AICHEM. To give our loyal customers a leading edge, IKA® has ensured that new product innovation has been introduced time and time again. And once again, IKA® has completely revamped its' shaker line by incorporating advanced technology with unique designs. As always, we continue our 100 year old tradition of bringing design, innovation, ease of use and commitment to our customers!

IKA® already has a line of well known and proven orbital and horizontal shakers. IKA® is proud to introduce a brand new series of Rollers, Rockers and Overhead Rotators. The wide range of Rocking, Rolling, Rotating and Shaking covers the entire spectrum of motions in mixing technology. All new devices are available in a basic and digital version. IKA® has also added a sibling to its' voluminous incubator shaker KS 4000 i control and ic control. The expanded product range facilitates the use of our equipment in a wider range of applications, especially in the medical and biological field. The hallmark of IKA®, exceptional design, innovation, quality, high efficiency, smooth operation and excellent performance continues as it has for 100 years!



3 Year warranty*

* 2+1 years after registering at www.ika.com/register, glassware and wearing parts excluded

Protection class according to DIN EN 60529: IP 21





2D & 3D Rockers | Enhanced dimensions, Smaller footprints!



Touch keypad for easy operation



Three-dimensional tumbling rocking/
see-saw motion



C/T button for choosing the counter
or the timer function



Two-dimensional
rocking/see-saw motion



2+1 years after registering at
www.ika.com/register



Timer display for accurate and
reproducible conditions



Dual platform option expands
workspace

The brand new range of 2D and 3D Rockers provide gentle rocking/see-saw action and are used for homogenous mixing in flasks, culture flasks, Petri dishes and tubes. The compact, small footprint and dual platform saves valuable bench space and facilitates easy-handling. Even with load and voltage fluctuations, shaking speeds remain constant. Precision in speed (available in fixed and variable) and adjustable tilt angle allow for a variety of applications.



2D & 3D Rockers accessories



TB 1 Tray

28 x for tubes 5 ml, Ø 12 mm

②

Ident. No.
0004532200



TB 2 Tray

16 x for tubes 15 ml, Ø 16 mm
"standard 15 ml tubes"

Ident. No.
0004532300

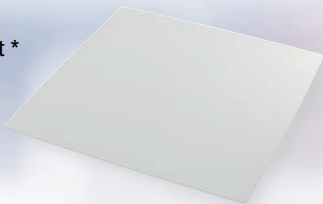


②

RD 1 Mat *

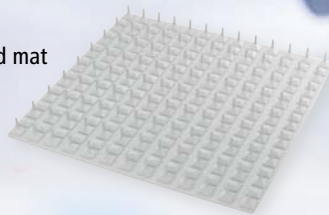
Ident. No.
0004532000

* Included in the delivery.



RD 2 Burred mat

Ident. No.
0004532100

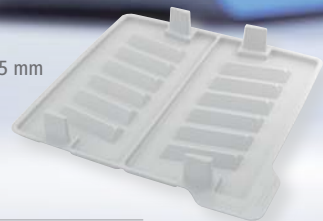


TB 3 Tray

14 x for tubes 30 ml, Ø 25 mm
"standard 30 ml tubes"

Ident. No.
0004532400

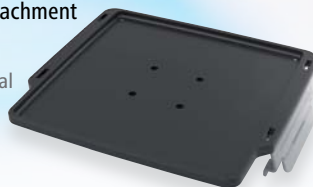
①



A 2 Second level attachment

For use with Rocker
2D, 3D basic and digital

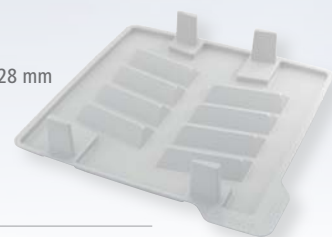
Ident. No.
0004581700



TB 4 Tray

10 x for tubes 30 ml, Ø 28 mm
"standard 50 ml tubes"

Ident. No.
0004532500



IKA®+

Special universal mat available to accommodate various kinds of vessels for maximum flexibility!

Rollers | Smart and safe mixing!



Timer display for accurate and reproducible conditions



C/T button for choosing the counter or the timer function



2+1 years after registering at www.ika.com/register



Touch keypad for easy operation



Gentle mixing applications demand smooth rocking and rolling action. Our 6 and 10 Rollers, operated at fixed and infinitely adjustable speed deliver this requirement efficiently. Easily removable attachments provide for quick cleaning in case of sample spills. Removable rollers allow for the use of larger tubes. Truly, a Rock n' Roll experience in the laboratory!

Rocking and Rolling action

IKA⁺



Rollers | Accessories



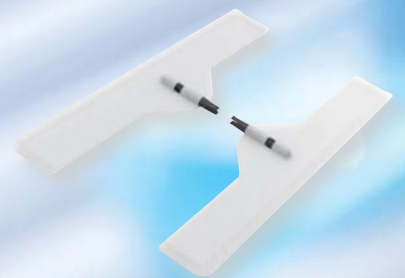
IKA®+

Easily removable rolls allow
the use of larger tubes.

① SH Shield*

Ident. No.
0004013500

* Included in the delivery.



Loopster | Spin your Loop!



Timer display for accurate and reproducible conditions



Choice of tube holders to hold a number of different sized tubes



90 degree adjustable mixing angle



2+1 years after registering at www.ika.com/register



Touch keypad for easy operation



C/T button for choosing the counter or the timer function

Rotate your samples smoothly and effectively, at fixed or infinitely variable speeds with freely adjustable rotary angles. Ideal for biological samples, particularly blood samples and also suitable for separating and mixing of powdered and liquid samples in multiple tube sizes as large as 50 ml conical tubes. Easily removable attachments provide for quick cleaning in case of sample spills.



Loopster | Accessories



DS 1 Tube attachment

48 x 1.5 ml microcentrifuge tubes;
Ø 10 mm

Ident. No.
0004524000



DS 6.1 Spare clips

48 x 1.5 ml, Ø 10 mm,
10 pieces

Ident. No.
0004524600



DS 2 Tube attachment

24 x 5 ml tubes, Ø 12 mm

Ident. No.
0004524100



DS 6.2 Spare clips

24 x 5 ml tubes, Ø 12 mm,
10 pieces

Ident. No.
0004524700



DS 3 Tube attachment

20 x 15 ml centrifuge tubes,
Ø 16 mm

Ident. No.
0004524200



DS 6.3 Spare clips

20 x 15 ml, Ø 16 mm,
10 pieces

Ident. No.
0004524800



DS 4 Tube attachment

12 x 30 ml, Ø 25 mm

Ident. No.
0004524300



DS 6.4 Spare clips

12 x 30 ml, Ø 25 mm,
10 pieces

Ident. No.
0004524900



DS 5 Tube attachment

12 x 50 ml centrifuge tubes,
Ø 28 mm

Ident. No.
0004524400



DS 6.5 Spare clips

12 x 50 ml, Ø 28 mm,
10 pieces

Ident. No.
0004525000

DS 6 Universal disc*

Single tube attachment for holding
five different kinds of tubes for
greater versatility.

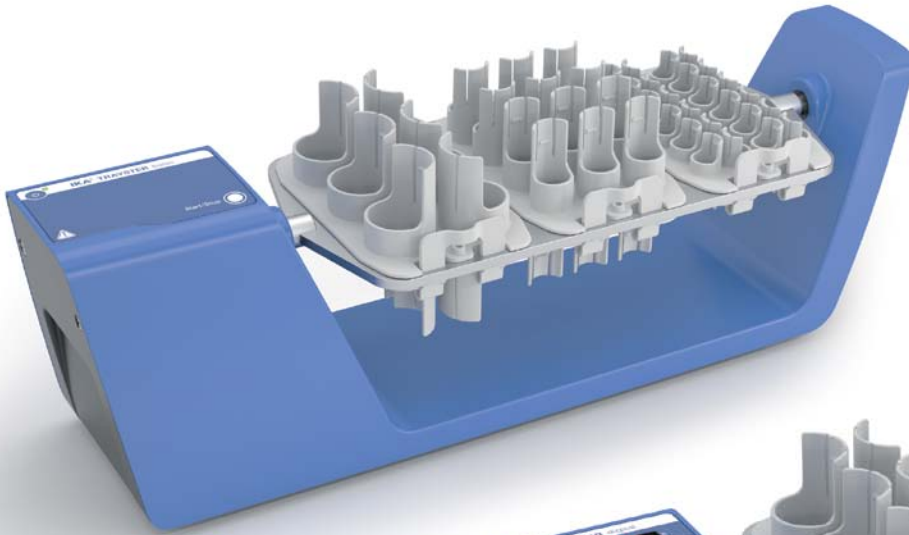
Ident. No.
0004524500

* Not included in the delivery.

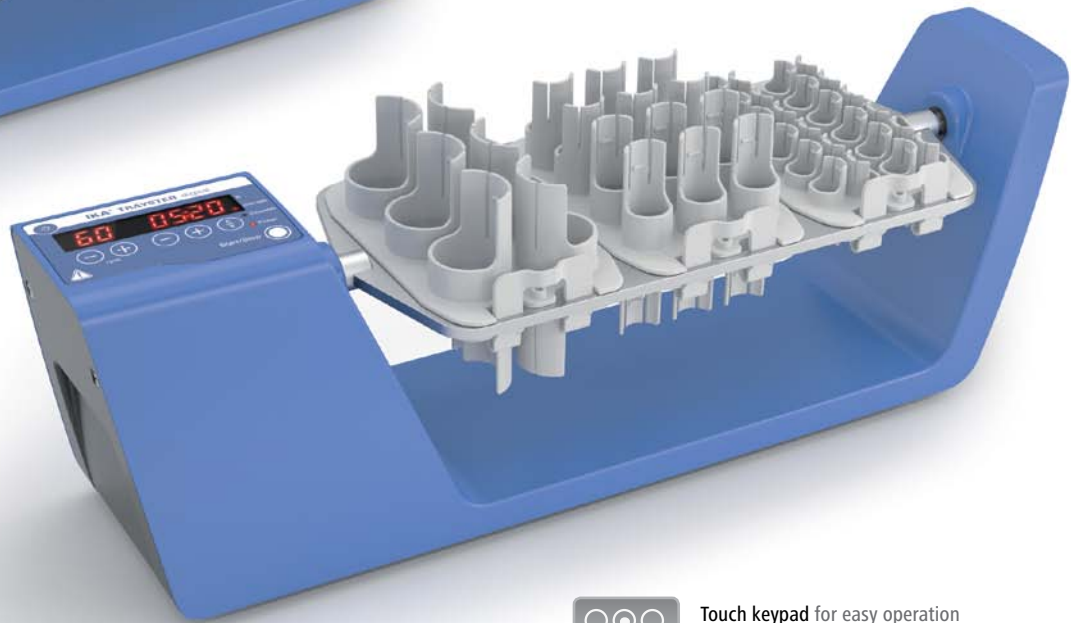
IKA+

To get customized and additional accessories, please visit
www.ika.com/service

Trayster | Swirl your way to perfect mixing!



Timer display for accurate and reproducible conditions



Three easily interchangeable tray inserts



Vertical rotating action



2+1 years after registering at www.ika.com/register

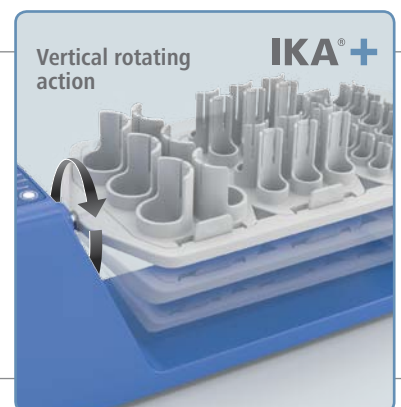


Touch keypad for easy operation

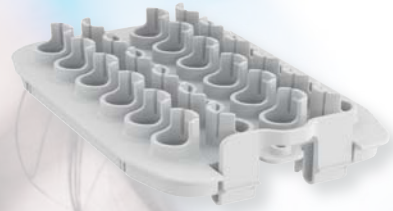


C/T button for choosing the counter or the timer function

Overhead shakers with vertical rotating action for smooth and effective mixing at fixed or infinitely adjustable speed. Ideal for biological samples, particularly blood and suitable for the separating and mixing of powdered and liquid samples in tubes of up to 50 ml. Easily removable attachments provide for quick cleaning in case of sample spills.



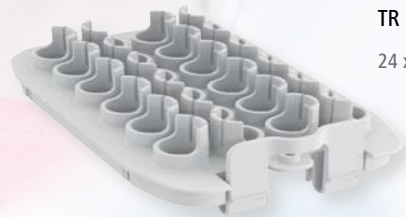
Trayster | Accessories



TR 1 Tube insert

24 x 1.5 ml microcentrifuge tubes;
Ø 10 mm

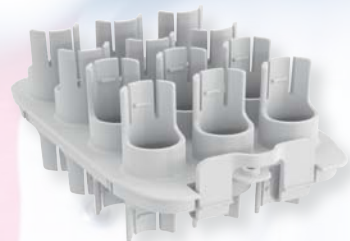
Ident. No.
0004525100



TR 2 Tube insert

24 x 5 ml tubes, Ø 12 mm

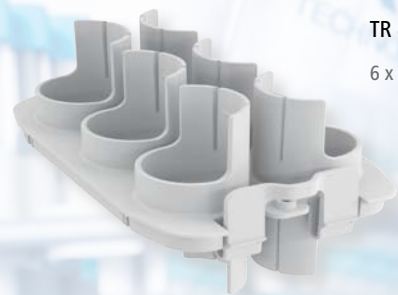
Ident. No.
0004525200



TR 3 Tube insert

12 x 15 ml centrifuge tubes, Ø 16 mm

Ident. No.
0004525300



TR 4 Tube insert

6 x 50 ml centrifuge tubes, Ø 28 mm

Ident. No.
0004525400

* All the above accessories not included in the delivery.

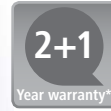
Incubator shakers | KS 3000 i / ic control



Large LED display for speed, temperature and timer



Assure highly accurate temperature control



Year warranty*

2+1 years after registering at www.ika.com/register



Built-in cooling coil for connection to an external cooling unit (available only for KS 3000 ic control)



USB interface to control and document all parameters using labworldsoft® software and for updating your firmware



Wide range of attachments allows for using almost all shapes and sizes of vessels



The KS 3000 series is the latest addition to the incubator shaker family. These sleek, compact, high-performance shakers are designed for safe, unattended operation in a temperature-controlled environment. Additionally, KS 3000 ic control is equipped with a built-in cooling coil for connection to an external cooling unit. Precise temperature control makes the incubator shaker a reliable asset in every lab, ensuring quiet, vibration-free and reliable operation - an excellent device for controlled mixing!

Orbital action

IKA®+



Accessories | KS 3000 i / ic control

AS 260.1

| | |
|------------------------|--------------------|
| Dimensions (W x D x H) | 425 x 335 x 135 mm |
| Set-up plate | 320 x 320 mm |
| Weight | 1600 g |



Ident. No.
0008017400

AS 260.1 Universal attachment

For various types of vessels. Infinitely variable clamping rolls allow universal adaptation to the vessels.

Included with delivery:

- 1 x AS 1.60 Basic holder,
- 4 x AS 1.61 Clamping roll ,
- 8 x AS 1.5 Fastening screw

AS 260.2

| | |
|---------------------------------|---|
| Dimensions (W x D x H) | 330 x 330 x 24 mm |
| Number of fixing clips (volume) | 56 x AS 2.1 (25 ml) 23 x AS 2.2 (50 ml) 23 x AS 2.3 (100 ml) 11 x AS 2.4 (250 ml) 9 x AS 2.5 (500 ml) 5 x AS 2.6 (1000 ml) |
| Weight | 1290 g |



Ident. No.
0003115500

AS 260.2 Fixing clip attachment

For shaking flasks, Erlenmeyer flasks and bottles with a round cross-section (without fixing clips).

Accessories:

Fixing clips: AS 2.1, AS 2.2, AS 2.3, AS 2.4, AS 2.5

AS 260.3

| | |
|------------------------|-------------------|
| Dimensions (W x D x H) | 410 x 370 x 32 mm |
| Set-up plate | 320 x 320 mm |
| Weight | 460 g |



Ident. No.
0003120600

AS 260.3 Dish attachment

For smooth movement for cell cultures, nutrient media in Petri dishes, culture bottles and vessels with a low center of gravity. With integrated slip-resistant foil (PP).

AS 260.5

| | |
|--|---|
| Dimensions (W x D x H) | 334 x 425 x 145 mm |
| Capacity: (number of separating funnels per volume, pear-shaped) | 6 x 50 ml 5 x 100 ml 3 x 250 ml 3 x 500 ml |
| Weight | 1550 g |



Ident. No.
0003120900

AS 260.5 Separating funnel attachment

For shaking out, salting out, extracting, eluting and enriching. The 3 clamping rolls (included in delivery) are height-adjustable for adaption to different separating funnel sizes. The separating funnels are secured with O-rings (6 O-rings included).

STICKMAX

| | | |
|------------------------------------|--------------|--------|
| Dimensions (W x D x H) | 200 x 200 mm | |
| Permissible ambient temperature | 5 – 80 °C | |
| Max. speed | 300 rpm | |
| Number of adhesive mats per shaker | KS 130 | 1 pcs. |
| | KS/HS 260 | 3 pcs. |
| | KS/HS 501 | 4 pcs. |
| | KS 3000 i | 2 pcs. |
| | KS 4000 i | 4 pcs. |

labworldsoft®

labworldsoft® is a multi-purpose software program for measuring, controlling and regulating laboratory devices.



Ident. No.
0004720000

STICKMAX

Universal adhesive mat for KS 130, KS/HS 260, KS/HS 501, KS 3000 and KS 4000 shakers.



Ident. No.
0003920000

PC 1.1 Cable

RS-232 cable 2, 9-pin, M/F, 3 m.

Ident. No.
0002616700

3D Shakers | Technical data

Available
2014



Rocker 2D basic | digital



Rocker 3D basic | digital



Loopster basic | digital

Technical data

| | | | |
|---|---|---|---|
| Type of movement | rocking | tumbling | rotating |
| Shaking diameter | 8° (angle) 2.5 – 15° (angle) | 8° (angle) 0 – 15° (angle) | adjustable from horizontal to vertical |
| Permissible shaking weight (incl. attachment) | 2 kg | 2 kg | 2 kg |
| Motor rating input / output | 16 / 9 W | 16 / 9 W | 16 / 9 W |
| Permissible ON time | 100% | 100% | 100% |
| Speed range | 5 – 80 rpm | 30 rpm (fixed) 5 – 80 rpm | 20 rpm (fixed) 5 – 80 rpm |
| Speed display | 7 segment LED | none 7 segment LED | none 7 segment LED |
| Timer | no ∞ / 1 s – 99.9 h | no ∞ / 1 s – 99.9 h | no ∞ / 1 s – 99.9 h |
| Timer display | none 7 segment LED | none 7 segment LED | none 7 segment LED |
| Operating mode | continuous operation timer and continuous operation | continuous operation timer and continuous operation | continuous operation timer and continuous operation |
| Dimensions (W x D x H) | 280 x 330 x 150 mm | 280 x 330 x 165 mm 280 x 330 x 185 mm | 300 x 300 x 360 mm |
| Weight | 2.2 kg | 2.2 kg | 3 kg |
| Permissible ambient temp. | 4 – 50 °C | 4 – 50 °C | 4 – 50 °C |
| Permissible relative moisture | 80% | 80% | 80% |
| Protection class acc. to DIN EN 60529 | IP 21 | IP 21 | IP 21 |
| Interface | no | no | no |
| Voltage | 100 – 240 V | 100 – 240 V | 100 – 240 V |
| Frequency | 50/60 Hz | 50/60 Hz | 50/60 Hz |
| DC Voltage | 24 V | 24 V | 24 V |

Rocker 2D basic: Ident. No. 0004002000

Rocker 2D digital: Ident. No. 0004003000

Rocker 3D basic: Ident. No. 0004000000

Rocker 3D digital: Ident. No. 0004001000

Loopster basic: Ident. No. 0004015000

Loopster digital: Ident. No. 0004016000

Available
2014



Trayster basic | digital



Roller 6 basic | digital



Roller 10 basic | digital

Technical data

| | | | |
|---|---|---|---|
| Type of movement | rotating | rocking and rolling | rocking and rolling |
| Shaking diameter | vertical or horizontal | 24.5 mm (high) | 24.5 mm (high) |
| Permissible shaking weight (incl. attachment) | 2 kg | 2 kg | 2 kg |
| Motor rating input / output | 16 / 9 W | 16 / 9 W | 16 / 9 W |
| Permissible ON time | 100% | 100% | 100% |
| Speed range | 20 rpm (fixed) 5 – 80 rpm | 30 rpm (fixed) 5 – 80 rpm | 30 rpm (fixed) 5 – 80 rpm |
| Speed display | none 7 segment LED | none 7 segment LED | none 7 segment LED |
| Timer | no ∞ / 1 s – 99.9 h | no ∞ / 1 s – 99.9 h | no ∞ / 1 s – 99.9 h |
| Timer display | none 7 segment LED | none 7 segment LED | none 7 segment LED |
| Operating mode | continuous operation timer and continuous operation | continuous operation timer and continuous operation | continuous operation timer and continuous operation |
| Dimensions (W x D x H) | 460 x 160 x 150 | 240 x 545 x 115 | 380 x 545 x 115 mm |
| Weight | 1.7 kg | 4.5 kg | 7 kg |
| Permissible ambient temp. | 4 – 50 °C | 4 – 50 °C | 4 – 50 °C |
| Permissible relative moisture | 80% | 80% | 80% |
| Protection class acc. to DIN EN 60529 | IP 21 | IP 21 | IP 21 |
| Interface | no | no | no |
| Voltage | 100 – 240 V | 100 – 240 V | 100 – 240 V |
| Frequency | 50/60 Hz | 50/60 Hz | 50/60 Hz |
| DC Voltage | 24 V | 24 V | 24 V |

Trayster basic: Ident. No. 0004005000

Trayster digital: Ident. No. 0004006000

Roller 6 basic: Ident. No. 0004010000

Roller 6 digital: Ident. No. 0004011000

Roller 10 basic: Ident. No. 0004012000

Roller 10 digital: Ident. No. 0004013000

Incubator shakers | Technical data



KS 3000 i control | ic control



KS 4000 i control | ic control

Technical data

| | | |
|---|--------------------------------|--------------------------------|
| Type of movement | orbital | orbital |
| Orbital diameter | 20 mm | 20 mm |
| Permissible shaking weight (incl. attachment) | 7.5 kg | 20 kg |
| Motor rating input / output | 45 / 10 W | 82 / 24 W |
| Power input | 1120 W | 1120 W |
| Permissible ON time | 100% | 100% |
| Speed range | 10 – 500 rpm | 10 – 500 rpm |
| Speed display | LED | LED |
| Timer | yes | yes |
| Timer display | LED | LED |
| Time setting range | 1 s – 999 h | 1 s – 999 h |
| Operating mode | timer and continuous operation | timer and continuous operation |
| Heating temperature range | RT +5 – 80 °C RT -10 – 80 °C | RT +5 – 80 °C RT -10 – 80 °C |
| Heat output | 1000 W | 1000 W |
| Temperature display | LED | LED |
| Temp. stability (0.2 l H ₂ O; RT 25°C, T = 37°C) | ± 0.1 K | ± 0.1 K |
| Dimensions (W x D x H) | 465 x 430 x 695 mm | 580 x 525 x 750 mm |
| Weight | 35 kg 37 kg | 50 kg 55 kg |
| Permissible ambient temperature | 15 – 32 °C | 15 – 32 °C |
| Permissible relative moisture | 80% | 80% |
| Protection class acc. to DIN EN 60529 | IP 30 | IP 30 |
| Interface | RS 232, USB | RS 232 |
| Voltage | 230 V | 230 V |
| Frequency | 50/60 Hz | 50/60 Hz |

KS 3000 i control: Ident. No. 0003940000

KS 3000 ic control: Ident. No. 0003940100

KS 4000 i control: Ident. No. 0003510000

KS 4000 ic control: Ident. No. 0003510100

Shakers | Technical data



MS 3 basic | digital



lab dancer



VORTEX Genius 3

Technical data

| | | | |
|---|---|--------------------------|------------------------------|
| Type of movement | orbital | orbital | orbital |
| Shaking diameter | 4.5 mm | 4.5 mm | 4 mm |
| Permissible shaking weight (incl. attachment) | 0.5 kg | max. 50 ml (1 test tube) | 0.4 kg |
| Motor rating input / output | 10 / 8 W | 1.2 / 0.8 W | 58 / 10 W |
| Permissible ON time | 100% | 100% | 100% |
| Speed range | 0 – 3000 rpm | 2800 rpm (fixed) | 500 – 2500 rpm |
| Speed display | scale digital | none | scale 0 – 6 |
| Timer | no ∞ / 1 s – 999 min | no | no |
| Timer display | none digital | none | none |
| Operating mode | continuous / touch operation timer and continuous / touch operation | touch operation | continuous / touch operation |
| Dimensions (W x D x H) | 148 x 205 x 63 mm | 100 x 70 mm (Ø x H) | 127 x 149 x 136 mm |
| Weight | 2.9 kg | 0.55 kg | 4.5 kg |
| Permissible ambient temp. | 5 – 40 °C | 5 – 40 °C | 5 – 40 °C |
| Permissible relative moisture | 80% | 80% | 80% |
| Protection class acc. to DIN EN 60529 | IP 21 | IP 40 | IP 21 |
| Interface | no | no | no |
| Voltage | 100 – 240 V | 100 – 240 V | 230 V |
| Frequency | 50/60 Hz | 50/60 Hz | 50/60 Hz |

MS 3 basic: Ident. No. 0003617000

MS 3 digital: Ident. No. 0003319000

Ident. No. 0003365000

Ident. No. 0003340000



VORTEX 1



VORTEX 4 basic | digital



VXR basic Vibrax®

Technical data

| | | | |
|---|------------------|--|----------------------|
| Type of movement | orbital | orbital | orbital |
| Shaking diameter | 4.5 mm | 4.5 mm | 4 mm |
| Permissible shaking weight (incl. attachment) | 0.1 kg | 0.5 kg | 2 kg |
| Motor rating input / output | 1.2 / 0.8 W | 10 / 8 W | 35 / 13.2 W |
| Permissible ON time | 100% | 100% | 100% |
| Speed range | 1000 – 2800 rpm | 0 – 3000 rpm | 0 – 2200 rpm |
| Speed display | none | scale digital | scale |
| Timer | no | no ∞ / 1 s – 999 min | no |
| Timer display | none | no digital | none |
| Operating mode | touch operation | continuous / touch operation timer and continuous / touch operation | continuous operation |
| Dimensions (W x D x H) | 95 x 110 x 70 mm | 176 x 190 x 63 mm | 157 x 247 x 130 mm |
| Weight | 0.55 kg | 3 kg | 6.1 kg |
| Permissible ambient temp. | 5 – 40 °C | 5 – 40 °C | 5 – 40 °C |
| Permissible relative moisture | 80% | 80% | 80% |
| Protection class acc. to DIN EN 60529 | IP 40 | IP 21 | IP 21 |
| Interface | no | no | no |
| Voltage | 100 – 240 V | 100 – 240 V | 230 V |
| Frequency | 50/60 Hz | 50/60 Hz | 50/60 Hz |

Ident. No. 0004047700

VORTEX 4 basic: Ident. No. 0004049600

VORTEX 4 digital: Ident. No. 0004050100

Ident. No. 0002819000



MTS 2/4 digital Microtiter shaker



KS 130 basic | control



KS 260 basic | control

Technical data

| | | | |
|---|--------------------------------|-------------------------------------|-------------------------------------|
| Type of movement | orbital | orbital | orbital |
| Shaking diameter | 3 mm | 4 mm | 10 mm |
| Permissible shaking weight (incl. attachment) | 2 or 4 microtiter plates | 2 kg | 7.5 kg |
| Motor rating input / output | 35 / 13.2 W | 45 / 10 W | 45 / 10 W |
| Permissible ON time | 100% | 100% | 100% |
| Speed range | 0 – 1100 rpm | 80 – 800 rpm | 20 – 500 rpm 10 – 500 rpm |
| Speed display | scale | LED line digital | LED line digital |
| Timer | ∞ / 1 – 99 min | ∞ / 5 – 50 min ∞ / 0 – 9 h 59 min | ∞ / 5 – 50 min ∞ / 0 – 9 h 59 min |
| Timer display | digital | LED line digital | LED line digital |
| Operating mode | timer and continuous operation | timer and continuous operation | timer and continuous operation |
| Dimensions (W x D x H) | 185 x 320 x 105 mm | 270 x 316 x 98 mm | 360 x 420 x 98 mm |
| Weight | 2.7 kg | 8.8 kg | 8.5 kg 8.8 kg |
| Permissible ambient temp. | 5 – 40 °C | 5 – 50 °C | 5 – 50 °C |
| Permissible relative moisture | 80% | 80% | 80% |
| Protection class acc. to DIN EN 60529 | IP 21 | IP 21 | IP 21 |
| Interface | no | no RS 232 | no RS 232 |
| Voltage | 230 V | 230 V | 230 V |
| Frequency | 50/60 Hz | 50/60 Hz | 50/60 Hz |

Ident. No. 0003208000

KS 130 basic: Ident. No. 0002980000

KS 130 control: Ident. No. 0002980100

KS 130 control (without end point positioning):
Ident. No. 0004278200

KS 260 basic: Ident. No. 0002980200

KS 260 control: Ident. No. 0002980300

KS 260 control (without end point positioning):
Ident. No. 0004278400

Shakers | Technical data



KS 501 digital



HS 260 basic | control



HS 501 digital

Technical data

Type of movement

orbital

Shaking diameter

30 mm

Permissible shaking weight
(incl. attachment)

15 kg

Motor rating input / output

70 / 19 W

Permissible ON time

100%

Speed range

0 – 300 rpm

Speed display

digital

Timer

∞ / 1 – 56 min

Timer display

digital

Operating mode

timer and continuous operation

Dimensions (W x D x H)

505 x 585 x 120 mm

Weight

26 kg

Permissible ambient temp.

5 – 50 °C

Permissible relative moisture

80%

Protection class acc. to DIN
EN 60529

IP 21

Interface

no

Voltage

230 V

Frequency

50/60 Hz

reciprocating

20 mm

7.5 kg

45 / 10 W

100%

20 – 300 rpm | 10 – 300 rpm

LED line | digital

∞ / 5 – 50 min | ∞ / 0 – 9 h 59 min

LED line | digital

timer and continuous operation

360 x 420 x 100 mm

8.5 kg | 8.8 kg

5 – 50 °C

80%

IP 21

no | RS 232

230 V

50/60 Hz

reciprocating

30 mm

15 kg

70 / 19 W

100%

0 – 300 rpm

digital

∞ / 1 – 56 min

digital

timer and continuous operation

505 x 585 x 120 mm

26 kg

5 – 50 °C

80%

IP 21

no

230 V

50/60 Hz

Ident. No. 0002526400

HS 260 basic: Ident. No. 0003066600

HS 260 control: Ident. No. 0003066700

HS 260 control (without end point positioning):
Ident. No. 0004278600

Ident. No. 0002527000

Accessories | KS 4000 i / ic control

AS 4000.1

| | |
|------------------------|--------------------|
| Dimensions (W x D x H) | 470 x 447 x 135 mm |
| Set-up plate | 380 x 410 mm |
| Weight | 3200 g |



Ident. No.
0008022200

AS 4000.1 Universal attachment

For use with various types of vessels. Infinitely variable clamping rolls allow universal adaptation to the vessels.

Included with delivery:

1 x Basic holder, 6 x Clamping roll,
12 x Fastening screw

AS 1.401

| | |
|--------|--------|
| Length | 417 mm |
|--------|--------|



Ident. No.
0003712000

AS 1.401 Clamping roll

Spare for use with universal attachment AS 4000.1.



Ident. No.
0003712300

AS 1.402 Fastening screw

Spare for use with universal attachment AS 4000.1. Two AS 1.402 fastening screws are required for fastening a clamping roll onto the corresponding basic holder.

AS 4000.2

| | |
|---------------------------------|----------------------|
| Dimensions (W x D x H) | 470 x 444 x 25 mm |
| Number of fixing clips (volume) | 50 x AS 2.1 (25 ml) |
| | 48 x AS 2.2 (50 ml) |
| | 25 x AS 2.3 (100 ml) |
| | 16 x AS 2.4 (250 ml) |
| | 12 x AS 2.5 (500 ml) |
| | 7 x AS 2.6 (1000 ml) |
| Set-up plate | 430 x 430 mm |
| Weight | 2650 g |



Ident. No.
0003710100

AS 4000.2 Fixing clip attachment

For shaking flasks, Erlenmeyer flasks and bottles with a round cross section (without fixing clips).

AS 4000.3

| | |
|------------------------|-------------------|
| Dimensions (W x D x H) | 470 x 444 x 25 mm |
| Set-up plate | 430 x 430 mm |
| Weight | 800 g |



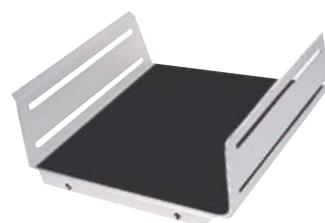
Ident. No.
0003710000

AS 4000.3 Dish attachment

For smooth shaking operations in the low viscosity range, e.g. for cell cultures, nutrient media in Petri dishes, culture bottles and vessels with a low center of gravity. With integrated slip-resistant foil (PP).

AS 1.400

| | |
|------------------------|--------------------|
| Dimensions (W x D x H) | 446 x 447 x 135 mm |
|------------------------|--------------------|



Ident. No.
0003710200

AS 1.400 Basic holder

Spare for use with universal attachment AS 4000.1

Accessories | VXR basic

VX 11.1

| | |
|---------------------|-------|
| Bore holes (number) | 70 |
| Hole Ø | 10 mm |



Ident. No.
0003659000

VX 11.1 Test tube insert

Attachment for Eppendorf tubes or test tubes.

VX 11.2

| | |
|---------------------|-------|
| Bore holes (number) | 41 |
| Hole Ø | 12 mm |



Ident. No.
0003659100

VX 11.2 Test tube insert

Attachment for test tubes.

VX 11.3

| | |
|---------------------|-------|
| Bore holes (number) | 32 |
| Hole Ø | 16 mm |



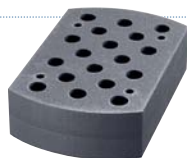
Ident. No.
0003659200

VX 11.3 Test tube insert

Attachment for test tubes.

VX 11.4

| | |
|---------------------|-------|
| Bore holes (number) | 18 |
| Hole Ø | 20 mm |



Ident. No.
0003659300

VX 11.4 Test tube insert

Attachment for test tubes.

VX 1

| | |
|------------------------|-------------------|
| Dimensions (W x D x H) | 130 x 135 x 40 mm |
| Weight | 160 g |

①



Ident. No.
0000607200

VX 1 One-hand attachment

For shaking single, non-fixed vessels of 1 – 250 ml.

VX 7

| | |
|------------------------|-------------------|
| Dimensions (W x D x H) | 410 x 210 x 40 mm |
| Weight | 740 g |



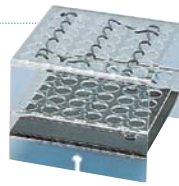
Ident. No.
0000953300

VX 7 Dish attachment

For careful mixing of culture bottles, Petri dishes, etc.

VX 2

| | |
|------------------------|--------------------|
| Dimensions (W x D x H) | 140 x 145 x 115 mm |
| Material | macrolon |
| Weight | 300 g |



Ident. No.
0000568900

VX 2 Test tube attachment

For up to 36 test tubes or centrifugal tubes with a diameter of 16 mm.

VX 8

| | |
|------------------------|-------------------|
| Dimensions (W x D x H) | 265 x 136 x 60 mm |
| Clamping range | 25 – 135 mm |
| Min. height of vessel | 80 mm |
| Weight | 760 g |



Ident. No.
0000910400

VX 8 Universal attachment

For rapid and secure clamping, e.g. 2 Erlenmeyer flasks up to 500 ml.

VX 2E

| | |
|------------------------|-------------------|
| Dimensions (W x D x H) | 210 x 210 x 65 mm |
| Weight | 790 g |



Ident. No.
0001618100

VX 2E "Eppendorf" attachment

For intensive mixing of up to 64 "microcentrifuge" tubes (1.5 ml).

Ident. No.
0003375400

VX 8.1 Clamping roll

Spare for use with VX 8 universal attachment.



Ident. No.
0003627700

VX 11 Basic holder

Attachment for test tube inserts.



①



Accessories | KS 130

AS 130.1

| | |
|------------------------|-------------------|
| Dimensions (W x D x H) | 325 x 234 x 88 mm |
| Set-up plate | 220 x 220 mm |
| Weight | 850 g |



Ident. No.
0008017300

AS 130.1 Universal attachment

For use with various types of vessels by means of universal, infinitely variable clamping rolls.

Included with delivery:

1 x AS 1.30 Basic holder,
3 x AS 1.31 Clamping roll,
6 x AS 1.5 Fastening screw

AS 130.2

| | |
|---------------------------------|--|
| Dimensions (W x D x H) | 230 x 230 x 24 mm |
| Number of fixing clips (volume) | 20 x AS 2.1 (25 ml) 12 x AS 2.2 (50 ml) 12 x AS 2.3 (100 ml) 4 x AS 2.4 (250 ml) 4 x AS 2.5 (500 ml) |
| Weight | 650 g |



Ident. No.
0003115000

AS 130.2 Fixing clip attachment

For processing round flasks, measuring flasks and Erlenmeyer flasks. Please order fixing clips separately.

Accessories:

Fixing clips: AS 2.1, AS 2.2, AS 2.3, AS 2.4, AS 2.5

AS 130.3

| | |
|------------------------|-------------------|
| Dimensions (W x D x H) | 420 x 270 x 32 mm |
| Set-up plate | 220 x 340 mm |
| Weight | 370 g |



Ident. No.
0003120000

AS 130.3 Dish attachment

For smooth shaking operations in the low viscosity range, e.g. Petri dishes or culture bottles. With integrated slip-resistant foil (PP).

AS 130.4

| | |
|------------------------|-------------------|
| Dimensions (W x D x H) | 220 x 230 x 95 mm |
| Capacity | 64 |
| Vessel Ø | 10 – 16 mm |
| Min. height of vessel | 80 mm |
| Min. height of vessel | 670 g |



Ident. No.
0003120300

AS 130.4 Test tube attachment

For intensive shaking, e.g. small tubes, test tubes, cuvettes, centrifuge tubes.



Accessories | HS / KS 260

AS 260.1

| | |
|------------------------|--------------------|
| Dimensions (W x D x H) | 425 x 335 x 135 mm |
| Set-up plate | 320 x 320 mm |
| Weight | 1600 g |



Ident. No.
0008017400

AS 260.1 Universal attachment

For various types of vessels. Infinitely variable clamping rolls allow universal adaptation to the vessels.

Included with delivery:

1 x AS 1.60 Basic holder,
4 x AS 1.61 Clamping roll ,
8 x AS 1.5 Fastening screw

AS 260.2

| | |
|---------------------------------|---|
| Dimensions (W x D x H) | 330 x 330 x 24 mm |
| Number of fixing clips (volume) | 56 x AS 2.1 (25 ml) 23 x AS 2.2 (50 ml) 23 x AS 2.3 (100 ml) 11 x AS 2.4 (250 ml) 9 x AS 2.5 (500 ml) 5 x AS 2.6 (1000 ml) |
| Weight | 1290 g |



Ident. No.
0003115500

AS 260.2 Fixing clip attachment

For shaking flasks, Erlenmeyer flasks and bottles with a round cross-section (without fixing clips).

Accessories:

Fixing clips: AS 2.1, AS 2.2, AS 2.3, AS 2.4, AS 2.5

AS 260.3

| | |
|------------------------|-------------------|
| Dimensions (W x D x H) | 410 x 370 x 32 mm |
| Set-up plate | 320 x 320 mm |
| Weight | 460 g |



Ident. No.
0003120600

AS 260.3 Dish attachment

For smooth movement for cell cultures, nutrient media in Petri dishes, culture bottles and vessels with a low center of gravity. With integrated slip-resistant foil (PP).

AS 260.5

| | |
|--|---|
| Dimensions (W x D x H) | 334 x 425 x 145 mm |
| Capacity: (number of separating funnels per volume, pear-shaped) | 6 x 50 ml 5 x 100 ml 3 x 250 ml 3 x 500 ml |
| Weight | 1550 g |



Ident. No.
0003120900

AS 260.5 Separating funnel attachment

For shaking out, salting out, extracting, eluting and enriching. The 3 clamping rolls (included in delivery) are height-adjustable for adaption to different separating funnel sizes. The separating funnels are secured with O-rings (6 O-rings included).



AS 1.30

Dimensions (W x D x H) 252 x 234 x 88 mm



AS 1.30 Basic holder

For use with universal attachment AS 130.1.

Accessories:
AS 1.31, AS 1.5

Ident. No.
0003148000

AS 1.60

Dimensions (W x D x H) 348 x 335 x 135 mm



AS 1.60 Basic holder

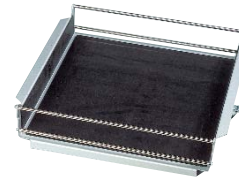
For use with universal attachment AS 260.1.

Accessories:
AS 1.61, AS 1.5

Ident. No.
0003149000

AS 1.10

Dimensions (W x D x H) 480 x 480 x 120 mm



AS 1.10 Basic holder

For use with universal attachment AS 501.1
and separating funnel attachments AS 501.2,
AS 501.3 and AS 501.6.

Accessories:
AS 1.11, AS 1.6, AS 1.7, AS 1.8, AS 1.12, AS 1.13

Ident. No.
0002339700

AS 1.31

For basic holder AS 1.30
Length 228 mm

AS 1.61

For basic holder AS 1.60
Length 335 mm

AS 1.11

For basic holder AS 1.10
Length 410 mm



Clamping roll

AS 1.31
AS 1.61
AS 1.11

Ident. No.
0003030500 AS 1.31
0003030501 AS 1.61
0002339800 AS 1.11

Accessories | HS / KS 501 digital

AS 501.1

| | |
|------------------------|--------------------|
| Dimensions (W x D x H) | 480 x 500 x 120 mm |
| Set-up plate | 420 x 420 mm |
| Weight | 4000 g |



Ident. No.
0008000200

AS 501.1 Universal attachment

For various types of vessels with a minimum volume of 50 ml. Ideally more than 250 ml. The clamping rolls may be adjusted to two levels.

Included with delivery:

1 x AS 1.10 Basic holder, 6 x AS 1.11 Clamping roll, 12 x AS 1.6 Fastening screw

AS 501.2

| | |
|--|---------------------------|
| Dimensions (W x D x H) | 480 x 505 x 190 mm |
| Capacity: | 12 x 50 ml |
| (number of separating funnels per volume, pear-shaped) | 10 x 100 ml 6 x 250 ml |
| Weight | 4180 g |



Ident. No.
0008000300

AS 501.2 Separating funnel attachment

For shaking out, eluting, extracting, gassing out, dissolving, enriching, etc. Adjustment for the clamping rolls is infinitely variable, the set-up height can be changed by means of clamping devices.

Included with delivery:

1 x AS 1.10, 6 x AS 1.11, 6 x AS 1.6, 6 x AS 1.7

AS 501.3

| | |
|--|----------------------------|
| Dimensions (W x D x H) | 480 x 505 x 190 mm |
| Capacity: | 4 x 500 ml |
| (number of separating funnels per volume, pear-shaped) | 3 x 1000 ml 2 x 2000 ml |
| Weight | 3720 g |



Ident. No.
0008000400

AS 501.3 Separating funnel attachment

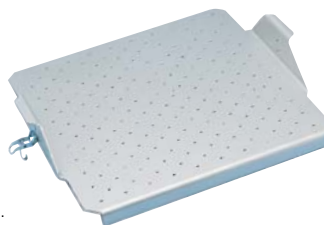
Same features as AS 501.2.

Included with delivery:

1 x AS 1.10, 4 x AS 1.11, 4 x AS 1.6, 4 x AS 1.7

AS 501.4

| | |
|---------------------------------|---|
| Dimensions (W x D x H) | 475 x 460 x 95 mm |
| Number of fixing clips (volume) | 110 x AS 2.1 (25 ml) 55 x AS 2.2 (50 ml) 35 x AS 2.3 (100 ml) 16 x AS 2.4 (250 ml) 12 x AS 2.5 (500 ml) 8 x AS 2.6 (1000 ml) |
| Weight | 2640 g |



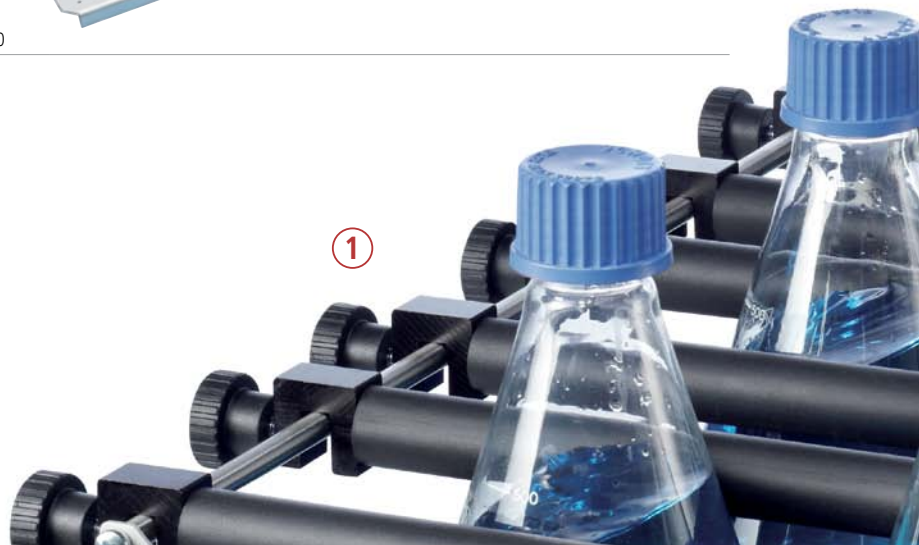
Ident. No.
0002341100

AS 501.4 Fixing clip attachment

For shaking flasks, Erlenmeyer flasks and pear-shaped flasks (without fixing clips).

Accessories:

Fixing clips : AS 2.1, AS 2.2, AS 2.3, AS 2.4, AS 2.5



AS 501.5

| | |
|------------------------|-------------------|
| Dimensions (W x D x H) | 450 x 450 x 45 mm |
| Set-up plate | 420 x 420 mm |
| Weight | 1120 g |



Ident. No.
0002339600

AS 501.5 Dish attachment

For smoothly shaking dishes, but also for smooth mixing in vessels with a large, flat bottom (wide-necked Erlenmeyer flasks and beakers). A plastic foil with mild adhesive prevents the vessel from slipping.

AS 501.6

| | |
|--|--------------------|
| Dimensions (W x D x H) | 480 x 505 x 225 mm |
| Capacity: (number of separating funnels per volume, pear-shaped) | 4 x 1000 ml |
| Weight | 5500 g |



Ident. No.
0008000500

AS 501.6 Separating funnel attachment

Same features as AS 501.2. This attachment will hold 4 x 1000 ml separating funnels.

Included with delivery:

1 x AS 1.10, 4 x AS 1.6, 4 x AS 1.12, 8 x AS 1.13

STICKMAX

| | | |
|------------------------------------|--------------|--------|
| Dimensions (W x D x H) | 200 x 200 mm | |
| Permissible ambient temperature | 5 – 80 °C | |
| Max. speed | 300 rpm | |
| Number of adhesive mats per shaker | KS 130 | 1 pcs. |
| | KS/HS 260 | 3 pcs. |
| | KS/HS 501 | 4 pcs. |
| | KS 3000 i | 2 pcs. |
| | KS 4000 i | 4 pcs. |



Ident. No.
0003920000

STICKMAX

Universal adhesive mat for KS 130, KS/HS 260, KS/HS 501, KS 3000 and KS 4000 shakers.

- Ideal for frequently changing vessel types and sizes
- Self-adhesive
- Devices can be easily removed by side tilting movement
- Suitable for disinfection
- Peel-away strength required: 5 N/cm²



Accessories | HS / KS 501 digital and VORTEX Shakers



AS 1.5 Fastening screw

Fastening screw for the universal attachments AS 130.1, AS 260.1 and the separating funnel attachment AS 260.5. Two AS 1.5 fastening screws are required for fastening a clamping roll onto the corresponding basic holder.

Ident. No.
0002979400



AS 1.7 Clamping device

Two AS 1.6 and two AS 1.7 clamping devices are required for fastening two clamping rolls one above the other (for clamping separating funnels). For basic holder AS 1.10 only.

Ident. No.
0001269200



AS 1.6 Fastening screw

Two AS 1.6 clamping devices are required for fastening a clamping roll to the corresponding basic holder (for basic holder AS 1.10 only).

Ident. No.
0001268400



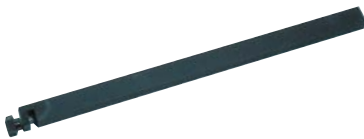
AS 1.8 Supporting clamping device

Two AS 1.6 clamping devices and two AS 1.8 supporting clamping devices are required if a clamping roll is to be attached at a higher position (e.g. for fixing a vessel which has a higher point of gravity). For basic holder AS 1.10 only.

Ident. No.
0001268900

AS 1.12 Supporting bar

For attaching two AS 1.13 ground section holders for fixing 1000 ml separating funnels. For basic holder AS 1.10 only.
Accessories: AS 1.13



Ident. No.
0002594500 Length 437 mm



AS 1.13 Ground section holder

For attaching separating funnels with ground opening NS 29 (2 x AS 1.13 necessary per separating funnel). For basic holder AS 1.10 only.

Ident. No.
0002597000

| For flask volume | AS | Volume |
|------------------|--------|-----------------|
| | AS 2.1 | 25 ml |
| | AS 2.2 | 50 ml |
| | AS 2.3 | 100 ml |
| | AS 2.4 | 200 ml / 250 ml |
| | AS 2.5 | 500 ml |
| | AS 2.6 | 1000 ml |

| Ident. No. | AS |
|--------------|--------|
| 1 0001234300 | AS 2.1 |
| 2 0001234400 | AS 2.2 |
| 3 0001234500 | AS 2.3 |
| 4 0001234600 | AS 2.4 |
| 5 0001234700 | AS 2.5 |
| 6 0003819300 | AS 2.6 |

- 1 AS 2.1 Fixing clip
- 2 AS 2.2 Fixing clip
- 3 AS 2.3 Fixing clip
- 4 AS 2.4 Fixing clip
- 5 AS 2.5 Fixing clip
- 6 AS 2.6 Fixing clip



VG 3.1 Standard attachment

Standard attachment for reagent glasses / small vessels (continuous / touch operation), included with delivery.

Ident. No.
0003341200



VG 3.31 Test tube attachment*

For 54 Eppendorf tubes (continuous operation).

Ident. No.
0003344300



VG 3.2 One-hand attachment

One-hand attachment, 88 mm, round, with rubber insert (continuous / touch operation).

Ident. No.
0003342300



VG 3.32 Test tube attachment*

For 18 reagent glasses, 10 mm (continuous operation).

Ident. No.
0003343900



VG 3.21 Rubber pad

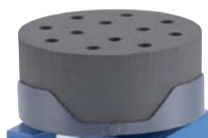
For use with VG 3.2 One-hand attachment.

Ident. No.
0004206500

VG 3.33 Test tube attachment*

For 12 reagent glasses, 12 mm (continuous operation).

Ident. No.
0003344000



VG 3.3 Universal attachment

Universal attachment, 150 mm, with rubber insert (continuous operation).

Ident. No.
0003342400



VG 3.34 Test tube attachment*

For 8 reagent glasses, 16 mm (continuous operation).

Ident. No.
0003344100



VG 3.35 Test tube attachment*

For 8 reagent glasses, 20 mm (continuous operation).

Ident. No.
0003344200



VG 3.36 Erlenmeyer flask attachment*

For 1 Erlenmeyer / round flask from 100 to 250 ml (continuous operation).

Ident. No.
0003342100



VG 3.37 Microtiter plate attachment*

For 1 standard microtiter plate (continuous operation).

Ident. No.
0003344400



* For VG 3.3 Universal attachment

MS 3.1 Standard attachment

For test tubes and small vessels up to Ø 50 mm, included with the minishakers MS 3 basic and MS 3 digital.



Ident. No.
0003426300

MS 1.21 One-hand insert

For inserting into the universal attachment, included with the minishakers MS 3 basic and MS 3 digital.



Ident. No.
000L001540

MS 1.33 Test tube insert

For inserting into the universal attachment, for 4 test tubes Ø 16 mm. Material: ethylvinyl-acetate.



Ident. No.
000L001860

MS 3.3 Universal attachment

For various foam inserts, included with the minishakers MS 3 basic and MS 3 digital.



Ident. No.
0003426600

MS 1.31 Test tube insert

For inserting into universal attachment, for 14 test tubes Ø 10 mm, material: ethylvinyl-acetate.



Ident. No.
000L001840

MS 1.34 Test tube insert

For inserting into the universal attachment, for any number of bore holes. Material: ethylvinyl-acetate.



Ident. No.
000L001830

MS 3.4 Microtiter plate attachment

For use with a microtiter plate, included with the minishaker MS 3 digital.



Ident. No.
0003426400

MS 1.32 Test tube insert

For inserting into the universal attachment, for 6 test tubes Ø 12 mm. Material: ethylvinyl-acetate. Included with the minishakers MS 3 digital.



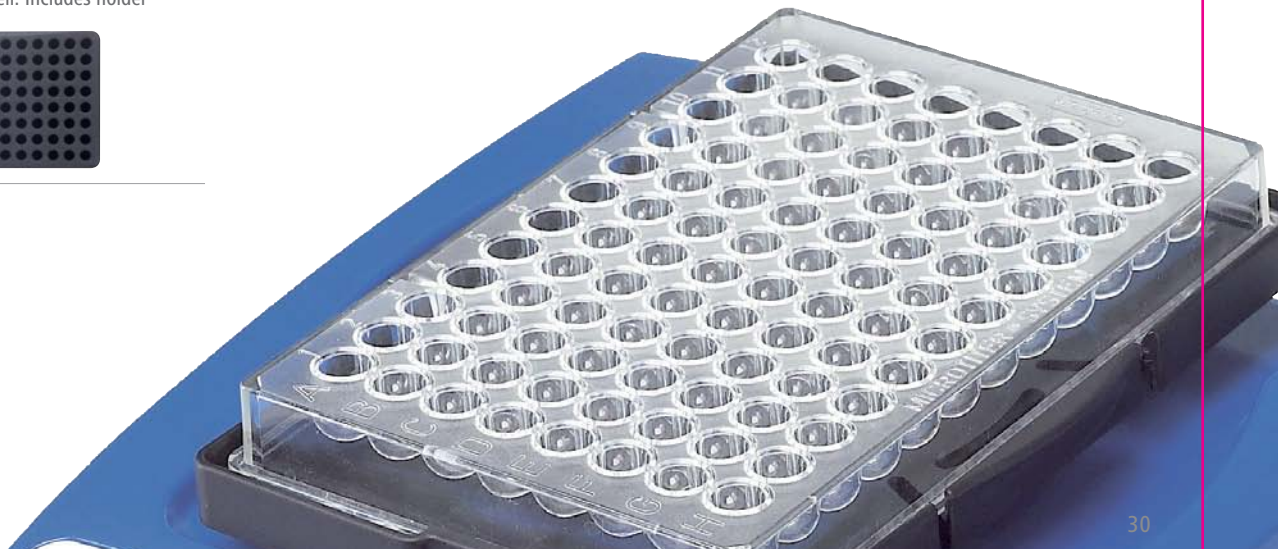
Ident. No.
000L001850

MS 3.5 PCR plate attachment

For holding PCR plates, 96-well. Includes holder and insert.



Ident. No.
0003428000



Shakers | Vessel capacity

| Erlenmeyer Flasks | | | | | | | | | | |
|-------------------|----------------------------------|-------|-------|--------|--------|--------|---------|---------|---------|---------|
| IKA® Shaker | Attachment Combination | 25 ml | 50 ml | 100 ml | 250 ml | 500 ml | 1000 ml | 2000 ml | 3000 ml | 5000 ml |
| KS 130 | STICKMAX | 23 | 15 | 6 | 5 | 4 | 1 | 1** | | 0 |
| KS 130 | AS 130.1 | 15 | 12 | 6 | 2 | 2 | 1 | 1** | | 0 |
| KS 130 | required clamping rolls | 4 | 4 | 3 | 2 | 2 | 2 | 2 | | 0 |
| KS 130 | AS 130.2 Fixing Clip Attachment | 12 | 12 | 8 | 4 | 4 | 1 | 0 | | 0 |
| KS 260 | STICKMAX | 25 | 16 | 9 | 10 | 9 | 5 | 2 | | 1 |
| KS 260 | AS 260.1 | 21 | 18 | 15 | 8 | 6 | 3 | 1 | | 1 |
| KS 260 | required clamping rolls | 4 | 4 | 4 | 4 | 4 | 3 | 2 | | 2 (4) |
| KS 260 | AS 260.2 Fixing Clip Attachment | 31 | 28 | 16 | 10 | 8 | 5 | 4 | | 0 |
| KS 501 | STICKMAX | 25 | 16 | 9 | 25 | 16 | 9 | 5 | 1 | 1 |
| KS 501 | AS 501.1 | 50 | 40 | 30 | 16 | 12 | 9 | 4 | 4 | 1 |
| KS 501 | required clamping rolls | 6 | 6 | 6 | 5 | 4 | 6 | 3 | 3 | 2 |
| KS 501 | AS 501.4 Fixing Clip Attachment | 50 | 35 | 30 | 16 | 12 | 8 | 5 | 0 | 0 |
| KS 4000 i control | STICKMAX | 25 | 16 | 9 | 29 | 16 | 9 | 4 | 1 | 0 |
| KS 4000 i control | AS 4000.1 | 45 | 40 | 30 | 16 | 9 | 8 | 4 | 2 | 0 |
| KS 4000 i control | required clamping rolls | 6 | 6 | 6 | 8 | 4 | 4 | 4 | 2 | 0 |
| KS 4000 i control | AS 4000.2 Fixing Clip Attachment | 55 | 38 | 25 | 16 | 11 | 7 | 4 | 0 | 0 |



| Beakers (high form) | | | | | | | | | | | | |
|---------------------|---------------------------------------|-------|-------|--------|--------|--------|--------|--------|--------|---------|---------|---------|
| IKA® Shaker | Attachment Combination | 25 ml | 50 ml | 100 ml | 150 ml | 250 ml | 400 ml | 600 ml | 800 ml | 1000 ml | 2000 ml | 3000 ml |
| KS 130 | STICKMAX | 25 | 16 | 9 | 9 | 9 | 5 | 4 | 4 | 4* | 1* | 1* |
| KS 130 | AS 130.1 max. quantity | 18 | 15 | 8 | 6 | 6 | 3 | 2 | 2 | 2 | 1* | 1* |
| KS 130 | required clamping rolls for AS 130.1 | 4 | 3 | 3 | 3 | 3 | 2 | 2 | 2 | 2 | 2 | 2 |
| KS 260 | STICKMAX | 64 | 36 | 25 | 25 | 16 | 9 | 9 | 9 | 9 | 4* | 4* |
| KS 260 | AS AS 260.1 max. quantity | 45 | 28 | 18 | 15 | 15 | 8 | 6 | 6 | 6 | 2 | 2 |
| KS 260 | required clamping rolls for AS 260.1 | 6 | 5 | 4 | 4 | 4 | 3 | 3 | 3 | 3 | 2 | 2 |
| KS 501 | STICKMAX | 121 | 81 | 49 | 36 | 36 | 25 | 16 | 16 | 9 | 9 | 4 |
| KS 501 | AS 501.1 max. quantity | 96 | 90 | 40 | 35 | 24 | 20 | 12 | 12 | 12 | 12 | 4 |
| KS 501 | required clamping rolls for AS 501.1 | 9 | 8 | 5 | 5 | 5 | 4 | 4 | 4 | 4 | 3 | 4 |
| KS 4000 i control | STICKMAX | 121 | 81 | 49 | 36 | 36 | 25 | 16 | 16 | 9 | 9 | 4 |
| KS 4000 i control | AS 4000.1 max. quantity | 77 | 48 | 35 | 30 | 24 | 20 | 12 | 12 | 12 | 6 | 4 |
| KS 4000 i control | required clamping rolls for AS 4000.1 | 8 | 7 | 6 | 5 | 5 | 4 | 4 | 4 | 4 | 3 | 3 |

* Limited recommendation! ** Not recommended!

Volumetric Flasks

| IKA® Shaker | Attachment Combination | 25 ml | 50 ml | 100 ml | 200 ml | 250 ml | 500 ml | 1000 ml | 2000 ml |
|-------------------|---|-------|-------|--------|--------|--------|--------|---------|---------|
| KS 130 | STICKMAX | 25 | 16 | 9 | 5 | 5 | 2 | 1** | ** |
| KS 130 | AS 130.1 | 16 | 12 | 6 | 3 | 2 | 2 | 0 | 0 |
| KS 130 | required clamping rolls for AS 130.1 | 5 | 4 | 3 | 3 | 2 | 2 | 0 | 0 |
| KS 130 | AS 130.2 | 15 | 8 | 8 | 4 | 4 | 4 | 1 | 0 |
| KS 260 | STICKMAX | 49 | 36 | 25 | 10 | 10 | 9 | 4 | ** |
| KS 260 | AS 260.1 max. quantity | 32 | 24 | 20 | 12 | 16 | 6 | 2 | ** |
| KS 260 | required clamping rolls for AS 260.1 | 5 | 5 | 7 | 6 | 6 | 4 | 2 | ** |
| KS 260 | AS 260.2 | 30 | 29 | 23 | 9 | 9 | 8 | 4 | 3 |
| KS 501 | STICKMAX | 100 | 64 | 36 | 20 | 16 | 9 | 20 | ** |
| KS 501 | AS 501.1 + 10 AS 1.11 Clamping Roll + 20 AS 1.6 Fastening Screw | 70 | 56 | 30 | 25 | 20 | 12 | 6 | ** |
| KS 501 | required clamping rolls for AS 501.1 | 8 | 14 | 10 | 6 | 5 | 6 | 4 | ** |
| KS 501 | AS 501.2 | 55 | 50 | 35 | 20 | 20 | 11 | 8 | 5 |
| KS 4000 i control | STICKMAX | 100 | 64 | 36 | 20 | 20 | 16 | 6* | 0 |
| KS 4000 i control | AS 4000.1 | 70 | 40 | 24 | 20 | 20 | 12 | 6 | 0 |
| KS 4000 i control | required clamping rolls for AS 4000.1 | 8 | 6 | 5 | 8 | 8 | 6 | 4 | 0 |
| KS 4000 i control | AS 4000.2 | 52 | 49 | 30 | 19 | 19 | 11 | 6 | 0 |



Beakers (low form)

| IKA® Shaker | Attachment Combination | 25 ml | 50 ml | 100 ml | 150 ml | 250 ml | 400 ml | 600 ml | 800 ml | 1000 ml | 2000 ml | 3000 ml | 5000 ml | 10000 ml |
|-------------------|---------------------------------------|-------|-------|--------|--------|--------|--------|--------|--------|---------|---------|---------|---------|----------|
| KS 130 | STICKMAX | 25 | 16 | 9 | 9 | 5 | 4 | 4 | 4 | 2 | 1 | 1* | 1* | ** |
| KS 130 | AS 130.1 max. quantity | 15 | 8 | 8 | 8 | 4 | 2 | 2 | 2 | 2 | 2 | 1* | 0 | ** |
| KS 130 | required clamping rolls for AS 130.1 | 4 | 3 | 3 | 3 | 3 | 2 | 2 | 2 | 2 | 2 | 2 | | |
| KS 260 | STICKMAX | 64 | 36 | 25 | 16 | 10 | 9 | 9 | 6 | 6 | 4 | 2 | 1 | 1* |
| KS 260 | AS 260.1 max. quantity | 32 | 24 | 15 | 12 | 8 | 6 | 6 | 6 | 2 | 2 | 2 | 1 | 1* |
| KS 260 | required clamping rolls for AS 260.1 | 5 | 5 | 4 | 4 | 3 | 3 | 3 | 3 | 2 | 2 | 2 | 2 | 2 |
| KS 501 | STICKMAX | 100 | 64 | 49 | 36 | 25 | 16 | 16 | 10 | 9 | 9 | 4 | 4 | 1 |
| KS 501 | AS 501.1 max. quantity | 70 | 48 | 42 | 30 | 20 | 16 | 12 | 9 | 9 | 6 | 4 | 1 | 1 |
| KS 501 | required clamping rolls for AS 501.1 | 8 | 7 | 6 | 5 | 4 | 4 | 3 | 3 | 3 | 3 | 3 | 2 | 2 |
| KS 4000 i control | STICKMAX | 100 | 64 | 49 | 36 | 25 | 16 | 16 | 10 | 9 | 9 | 4 | 4 | 1* |
| KS 4000 i control | AS 4000.1 max. quantity | 70 | 48 | 30 | 20 | 20 | 12 | 12 | 9 | 6 | 4 | 4 | 2 | 1* |
| KS 4000 i control | required clamping rolls for AS 4000.1 | 8 | 7 | 6 | 5 | 5 | 4 | 4 | 4 | 3 | 3 | 3 | 2 | 2 |

* Limited recommendation! ** Not recommended!

IKA® offers more

labworldsoft®

IKA® laboratory software labworldsoft® is an advanced software for all your laboratory needs. With the help of this software, you can network up to 64 laboratory devices via one PC. All test parameters can be documented ensuring complete automation of your laboratory experiments. Measurements and processes may be run independently. Long waits and processing times are reduced, which increases productivity.



Comprehensive Worldwide Service!

Our dedicated team of engineers provides comprehensive worldwide technical service. Please feel free to contact your dealers or IKA® directly in case of any service queries. Hotline: In the event of an equipment malfunction or technical questions regarding devices and spare parts: call 00 8000 4524357 (00 8000 IKAHELP)



IKA® Application Support

Our Application Center spans 400 sqm and offers modern facilities for presenting and testing lab devices and processes. This brings us even closer to our customers and improves our service. Here, prospective buyers and customers can test out processes that involve stirring, shaking, dispersing, grinding, heating, analyzing and distilling. In addition, it also further extends the opportunity to test your own devices and to develop new models.



Knowledge | Select your ideal shaker

| Type of motion | Description | Diagram | Shaking diameter | Max. Permissible shaking weight |
|------------------------------|--|---|--|---------------------------------|
| Vortex | The cup generates a 'whirlpool' vortex action |  | 4.5 mm | 0.5 kg |
| | | | 4.5 mm | 0.5 kg |
| | | | 4.5 mm | max. 50 ml (1 test tube) |
| | | | 4.5 mm | 0.1 kg |
| | | | 4 mm | 0.4 kg |
| | | | 4.5 mm | 0.5 kg |
| | | | 4.5 mm | 0.5 kg |
| Orbital | The platform moves in a circular orbit |  | 20 mm | 20 kg |
| | | | 20 mm | 20 kg |
| | | | 20 mm | 7.5 kg |
| | | | 20 mm | 7.5 kg |
| | | | 4 mm | 2 kg |
| | | | 3 mm | 2 or 4 microtiter plates |
| | | | 4 mm | 2 kg |
| | | | 4 mm | 2 kg |
| | | | 10 mm | 7.5 kg |
| | | | 10 mm | 7.5 kg |
| Reciprocating | The platform moves back and forth horizontally |  | 20 mm | 7.5 kg |
| | | | 20 mm | 7.5 kg |
| | | | 30 mm | 15 kg |
| Rocking (See-saw action) | The platform rocks on a central pivot |  | 8° (angle) | 2 kg |
| | | | 0 – 15° (angle) | 2 kg |
| Rocking (3D Tumbling motion) | The platform moves in a three-dimensional motion |  | 8° (angle) | 2 kg |
| | | | 0 – 15° (angle) | 2 kg |
| Rocking and Rolling | The platform rocks on a central pivot as well as revolves around a fixed point |  | 24.5 mm (high) | 2 kg |
| | | | 24.5 mm (high) | 2 kg |
| | | | 24.5 mm (high) | 2 kg |
| | | | 24.5 mm (high) | 2 kg |
| Rotating | Platform revolves at a tilted angle |  | adjustable from horizontal to vertical | 2 kg |
| | | | adjustable from horizontal to vertical | 2 kg |
| | | | vertical or horizontal | 2 kg |
| | | | vertical or horizontal | 2 kg |



MS 3
basic | digital



lab dancer



VORTEX 1



VORTEX Genius 3



VORTEX 4
basic | digital



KS 4000 i | KS 4000 ic
control



KS 3000 i | KS 3000 ic
control



VXR basic Vibrax®



MTS 2/4 digital
microtiter shaker



KS 130
basic | control

A

B

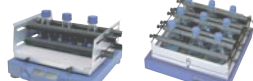
| Speed range | Recommended IKA® device | Applications |
|------------------|-----------------------------------|---|
| 0 – 3000 rpm | MS 3 basic | Suitable for shaking small vessels and microtiter plates |
| 0 – 3000 rpm | MS 3 digital | |
| 2800 rpm (fixed) | lab dancer | Ideal for use with all small vessels of up to 30 mm in diameter, e.g. test tubes, centrifuge tubes and microcentrifuge tubes |
| 1000 – 2800 rpm | VORTEX 1 | |
| 500 – 2500 rpm | VORTEX Genius 3 | |
| 0 – 3000 rpm | VORTEX 4 basic | Suitable for mixing in test tubes, microcentrifuge tubes, reagent glasses/small vessels, Erlenmeyer/round flask and microtiter plates |
| 0 – 3000 rpm | VORTEX 4 digital | |
| 10 – 500 rpm | KS 4000 i control | Ideal for unattended operation in a temperature-controlled environment |
| 10 – 500 rpm | KS 4000 ic control | |
| 10 – 500 rpm | KS 3000 i control | |
| 10 – 500 rpm | KS 3000 ic control | |
| 0 – 2200 rpm | VXR basic Vibrax® | Ideal for mixing in test tubes, microtiter plates, bottles, flasks and beakers. A wide range of attachment combinations allows for using almost all shapes and sizes of vessels |
| 0 – 1100 rpm | MTS 2/4 digital microtiter shaker | |
| 80 – 800 rpm | KS 130 basic | |
| 80 – 800 rpm | KS 130 control | |
| 20 – 500 rpm | KS 260 basic | |
| 10 – 500 rpm | KS 260 control | |
| 0 – 300 rpm | KS 501 digital | |
| 20 – 300 rpm | HS 260 basic | Ideal for shaking out, eluting, extracting, gassing out, dissolving, enriching, etc. |
| 10 – 300 rpm | HS 260 control | |
| 0 – 300 rpm | HS 501 digital | |
| 5 – 80 rpm | Rocker 2D basic | Used for homogenous mixing in flasks, culture flasks, Petri dishes and tubes |
| 5 – 80 rpm | Rocker 2D digital | |
| 30 rpm (fixed) | Rocker 3D basic | Ideal for low foaming agitation, DNA extractions, staining and de-staining procedures, etc. |
| 5 – 80 rpm | Rocker 3D digital | |
| 30 rpm (fixed) | Roller 6 basic | Recommended for mixing blood samples, viscous substances and liquid-solid suspensions where minimum aeration is required |
| 5 – 80 rpm | Roller 6 digital | |
| 30 rpm (fixed) | Roller 10 basic | |
| 5 – 80 rpm | Roller 10 digital | |
| 20 rpm (fixed) | Loopster basic | Ideal for keeping biological samples in suspension and for general mixing applications |
| 5 – 80 rpm | Loopster digital | |
| 20 rpm (fixed) | Trayster basic | |
| 5 – 80 rpm | Trayster digital | |



KS 260
basic | control



KS 501
digital



HS 260
basic | control



HS 501
digital



Rocker 2D
basic | digital



Rocker 3D
basic | digital



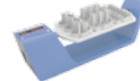
Roller 6
basic | digital



Roller 10
basic | digital



Loopster
basic | digital



Trayster
basic | digital

B

C

D

E

F

G

Prices valid until 31st of December 2013
All prices exclusive to VAT
Subject to alteration of prices
Subject to technical changes
Indications not binding for delivery

IKA®+

Ordering made easy!

For more information about our products and to place your order, please visit:

www.ika.com

201312_Shakers_brochure_IWS_EN_EUR

IKA®-Werke GmbH & Co. KG
Janke & Kunkel-Str. 10
79219 Staufen
Germany

Tel. +49 7633 831-0
Fax +49 7633 831-98

sales@ika.de
www.ika.com

IKA® German technology

FAQ

Is it possible to operate using IKA® laboratory software?

labworldsoft® is an advanced software for all your laboratory needs. With the help of this software, you can network up to 64 laboratory devices via one PC. All test parameters can be documented ensuring complete automation of your laboratory experiments. Measurements and processes may be run independently. Long waits and processing times are reduced, which increases productivity.

Can I place my shaker in a CO₂ chamber or in an incubator?

If the relative humidity does not exceed 80% and the temperature stays within 5 – 40 °C (partially until 50°C), the shaker can be used in a CO₂ chamber or an incubator.

Which IKA® shaker of the HS/KS series starts automatically after a power failure?

KS 130, KS 260, KS 3000 and KS 4000 start automatically in certain modes (C, C+B) after a power failure.

What kind of vortex shakers does IKA® offer?

(They should have a touch function, but also come equipped with various attachments, e.g. for microtiter plates) The Lab Dancer, MS 3 basic, digital VORTEX 4 and VORTEX Genius 3 are the appropriate devices. MS 3 basic, digital and VORTEX Genius 3 have a variety of attachments for most variable shaking tasks.

Is it possible to shake deepwell plates with the MTS 2/4?

No, deepwell plates cannot be fixed properly; their center of gravity is simply too high.



www.facebook.com/IKAworldwide