

# JENWAY

## 63 Series Spectrophotometers

The 63 series are entry-level single beam visible and UV/Visible non-scanning spectrophotometers which are ideal for routine analysis.



## Introducing the 63 Series

The 63 series range includes models 6300 and 6320D which cover the visible region of the spectrum and model 6305 which uses a pulsed xenon lamp to extend the wavelength range into the UV region of the spectrum. All three models have measurement modes for absorbance, % transmittance and concentration. This makes them ideal for basic photometric applications in schools and colleges, as well as in quality control laboratories.

## Key Features

- Multi-parameter display with wavelength and photometric readouts
- Small footprint
- Wide range of sampling accessories
- Domed lid of 6320D accepts tubes up to 105mm
- 6305 utilises a high quality pulsed xenon lamp
- Easy and intuitive operation
- 3 year warranty



6305

Part code: 635 001

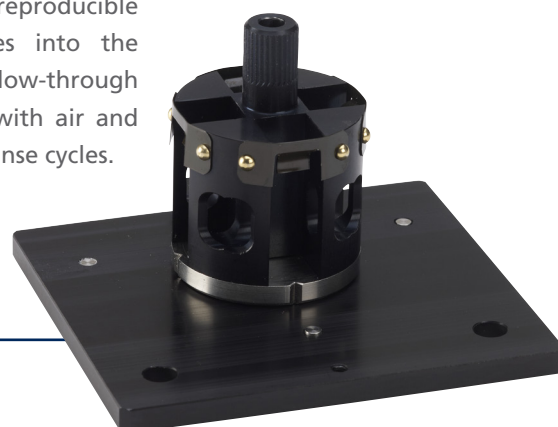


## Versatile and Flexible Accessories

The 63 series has been specifically designed to enable a wide range of accessories to be easily fitted and used. To accommodate various sample volumes there are a wide range of passive accessories available including an adjustable cuvette holder which can hold cuvettes between 10 and 100mm (part code 630 005); a test tube holder for test tubes with diameters between 16 and 24mm (part code 637 071); and for small sample volumes there is a micro-cuvette holder with a reduced aperture (part code 630 304). For multiple samples Jenway offer a four position rotary cuvette holder (part code 634 001).

## Temperature Control

Where temperature control is important Jenway offer a water heated cuvette option (part code 648 001) which requires a water bath and circulator (not supplied). For sampling applications Jenway offer an external sipper pump system (part code 632 001) which can be programmed to deliver controlled and reproducible sample volumes into the chamber of a flow-through cuvette along with air and segmentation rinse cycles.



4 cell turret

Part code: 634 001



Follow Jenway® equipment on Twitter!

[www.twitter.com/jenwayequipment](https://www.twitter.com/jenwayequipment)



## Design

The 63 series spectrophotometers are small and lightweight, making them easy to store or move to different locations within the laboratory. These instruments are easy to navigate, using push buttons to move round the simple user interface.

The design of model 6320D is based on the successful 6300 platform. It has been designed with a domed lid which enables test tubes, up to a height of 105mm, to be used. Model 6320D is supplied fitted with a dual cell holder (part code 632 511) so that either test tubes or standard 10x10mm cuvettes can be used to measure samples. All three models are covered by a 3 year warranty.



**6320D**

Part code: 632 501

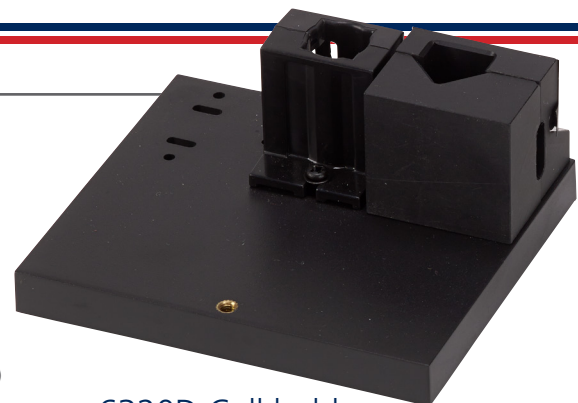


**6300**

Part code: 630 501

## 63 Series Accessories Ordering Information

Part Code	Description
630 204	10x10mm path length cuvette holder
630 005	10 to 100mm path length cuvette holder
634 001	4 position manual cuvette holder
630 304	Micro-cuvette holder with reduced aperture
632 511	Dual cell holder for 10mm cuvettes and 12.7mm diameter tubes (for use with 6320D only)
637 071	10mm square cuvette and 16, 24mm test tube holder
632 001	Sipper Pump supplied with inlet and outlet tubing (230V/50Hz)
632 031	Sipper Pump supplied with inlet and outlet tubing (110V/60Hz)
648 001	Water heated single cuvette holder
012 094	Xenon lamp module (6305)
012 075	Tungsten halogen lamp (6300/6320D)
543 001	40 column serial printer supplied with interface cable, paper roll and universal power supply



**6320D Cell holder**

Part code: 632 511

## Ordering Information

Product Code	Description
630 501	6300 visible spectrophotometer supplied with mains lead, pack 100 disposable cuvettes, 10 x 10mm cell holder, interface cable and PC application software on CD-ROM* (230V/50Hz)
630 531	6300 visible spectrophotometer supplied with mains lead, pack 100 disposable cuvettes, 10 x 10mm cell holder, interface cable and PC application software on CD-ROM* (110V/60Hz)
632 501	6320D visible spectrophotometer supplied with mains lead and dual cell holder (for 10mm square cuvettes and 12.7mm diameter tubes) (230V/50Hz)
632 521	6320D visible spectrophotometer supplied with mains lead and dual cell holder (for 10mm square cuvettes and 12.7mm diameter tubes) (110V/60Hz)
635 001	6305 UV/visible spectrophotometer supplied with mains lead, pack 100 disposable cuvettes, 10 x 10mm cell holder, interface cable and PC application software on CD-ROM* (230V/50Hz)
635 031	6305 UV/visible spectrophotometer supplied with mains lead, pack 100 disposable cuvettes, 10 x 10mm cell holder, interface cable and PC application software on CD-ROM* (110V/60Hz)

\* requires free on-line registration

## Technical Specification

Parameter	6300 and 6320D	6305
Wavelength range	320 to 1000nm	198 to 1000nm
Wavelength resolution	1nm	1nm
Wavelength accuracy	±2nm	±2nm
Spectral bandwidth	8nm	8nm, 6nm over UV range
Transmittance	0 to 199.9%T	0 to 199.9%T
Absorbance	-0.300 to 1.999A	-0.300 to 1.999A
Accuracy	±1%T	±1%T
Resolution	0.1%T, 0.001A	0.1%T, 0.001A
Stray light	<0.5%T	<0.5%T at 220 and 340nm
Noise	<1%	<0.001A at 0A at 400nm
Stability	1%/h after 15 minutes	<0.002A/h after 30 minutes
Concentration range	-300 to 1999	-300 to 1999
Concentration resolution	0.1 to 1	0.1 to 1
Units	ppm, mg/l, g/l, M, %, blank	ppm, mg/l, g/l, M, %, blank
Factor	0 to 999.9, 1000 to 9999	0 to 999.9, 1000 to 9999
Light source	Tungsten halogen lamp	Xenon lamp
Outputs	Analogue and RS232	Analogue and RS232
Power	<50W	<50W
Size (w x d x h)	365 x 272 x 160mm	365 x 272 x 160mm
Weight	6kg	6kg

# JENWAY

A Bibby Scientific Brand

Bibby Scientific - UK (Group HQ)  
Beacon Road,  
Stone, Staffordshire,  
ST15 0SA,  
United Kingdom  
Tel: +44 (0)1785 812121  
Fax: +44 (0)1785 813748  
e-mail: sales@bibby-scientific.com

sales@bibby-scientific.com

www.jenway.com



Find out more!!!

Please scan the QR/Mobile Tag with your smartphone for more information