

BioDrop

BioDrop

Thank you for purchasing BioDrop. This device will provide you with high quality measurements, based on its unique technology and exceptional accuracy.

BioDrop is a cuvette that can be used for accurate micro-volume measurements and is fully compatible with most UV/Vis spectrophotometers.

BioDrop is available in 8.5mm and 15mm beam heights. Please ensure that you have selected the correct beam height for your instrument.



Product Ordering Codes

Product Description	Part Number
Biodrop 500 z=15mm	80-3006-20
Biodrop 125 z=15mm	80-3006-21
Biodrop Ultimate z=15mm	80-3006-25
Biodrop 500 z=8.5mm	80-3006-30
Biodrop 125 z=8.5mm	80-3006-31
Biodrop Ultimate z=8.5mm	80-3006-35
Bubble viewer Biodrop z=15mm	80-3006-26
Bubble viewer Biodrop z=8.5mm	80-3006-27



For more information visit us at
www.biodrop.co.uk



So simple,
you'll wonder
why no-one
has done it
before

Quickstart Guide

For more information contact us at
enquiries@biodrop.co.uk

For more information visit us at
www.biodrop.co.uk

Preparing BioDrop



Place the BioDrop on the magnetic plate, provided on the top of the carry case



Open up the device by pulling the top cover, separating the two parts



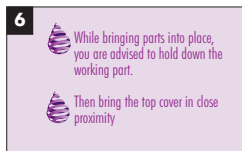
The working part is now mounted on the magnetic surface of the carry case





Carefully pipette the sample to be measured into the centre of the sample area



Assemble the BioDrop by simply bringing the two halves of the device together



-  While bringing parts into place, you are advised to hold down the working part.
-  Then bring the top cover in close proximity

Measurement



The sample is secured between the magnets



When measurement is complete remove the BioDrop from spectrophotometer




Place the BioDrop in the spectrophotometer and you are ready to go!



Disassemble for cleaning

Optional:

Once the sample has been loaded and the BioDrop reassembled, an optional check for dust or bubbles can be performed: Place the BioDrop into the bubble viewer to check for visual impurities

-  Check that your sample is free from bubbles or dust particles





Cleaning and care





Simply wipe both sample areas with a tissue

-  Please reassemble before cleaning the outside of the sample window.

 Do not use abrasive cleaners

 Do not autoclave

 Do not store above 60°C or below 0°C


 Do not use ultrasonic cleaning.


Handling Information

BioDrop is resistant to chemicals and solvents. A possible minor delamination effect on the fixed window bond was observed with 10% phenol and the same effect is likely to be observed when using acetone. A leachate on window indicates precipitation of dissolved material.

Instructional icons

Before you use this product, familiarise yourself with the icons you will see in this manual:

 Caution- could cause damage to the device or other equipment

 Note - tips or additional information

© BioDrop 2012. BioDrop and the BioDrop logo are registered trademarks

