

## Cleaning and Sterilization

If your mood changes and you would like to change the label or update pipette calibration, take the label off with water or acetone. To reorder label sheets, please visit [www.gilson.com](http://www.gilson.com).

**Cleaning:** Follow the cleaning procedures found in the PIPETMAN® User's Guide.

**Decontamination:** Check that the decontaminant is compatible with polypropylene plastic. Wipe PIPETMAN® Comfort Handle with a soft cloth or lint-free tissue and rinse it with distilled water before reassembling.

**Autoclaving:** Sterilize the two accessory elements as needed at 121° C (252° F), 1 atm for 20 minutes. For more details about autoclaving, refer to autoclaving procedures found in the PIPETMAN® User's Guide.

FAQs and User's Guide are available at [www.gilson.com](http://www.gilson.com).



pipetman®

COMFORT HANDLE

## User's Guide

EN



[gilson.com/contactus](http://gilson.com/contactus)

LT801548/C | ©2023 Gilson SAS. All rights reserved.  
All trademarks are the property of Gilson Inc. and its subsidiaries.

 **GILSON®**

 **GILSON®**

## Attaching the PIPETMAN® Comfort Handle to PIPETMAN® Models

### Single Models

- 1 Fit to the pipette body with the biggest part facing forward.
- 2 Squeeze the upper and lower parts of the accessory together to click it into place.



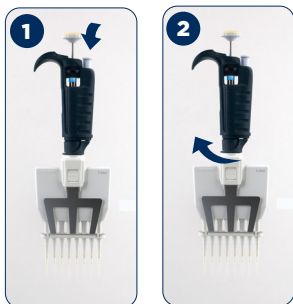
PIPETMAN single models may require removal of the tip holder before fitting PIPETMAN® Comfort Handle onto the pipette body. Refer to PIPETMAN® User's Guide LT801122 on [www.gilson.com](http://www.gilson.com).

#### NOTE

For P5000 and P10mL models, unscrew and remove the large, lower part before attaching the PIPETMAN® Comfort Handle. Make sure that the two parts are fully tightened when you reassemble the lower part of the body. Refer to PIPETMAN® User's Guide LT801122 on [www.gilson.com](http://www.gilson.com).

### Multichannel Models

- 1 Push the ejection button and slide the ejector clip.
- 2 Unscrew the connecting nut by turning it clockwise. Carefully separate the upper and lower parts.
- 3 Adjust the accessory as described for single models.
- 4 Reassemble the pipette.



### Removing the Accessory

- 1 Remove the lower part or the tip ejector if necessary.
- 2 Pull the bottom part of the hook upwards with your fingers.
- 3 Lift the accessory.



## Creating Your Custom Labels

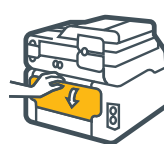
Each PIPETMAN® Comfort Handle is provided with pre-cut labels to write maintenance information, such as calibration date, or to let your imagination run free.

Connect at [www.gilson.com/pipetman-comfort-handle.html](http://www.gilson.com/pipetman-comfort-handle.html)

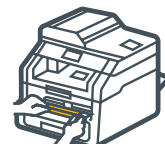
- 1 Download your sticker template.
- 2 Insert your pictures or text boxes. Choose a background and text color if needed.
- 3 Enter text and define color, front, size and or placement of your picture.

## Printing Label Sheets Out

The label sheets provided are compatible with most standard laser printers. Follow the steps below to prepare your custom labels for print.



- 1 Open the rear cover of the printer (side paper tray)



- 2 Slide the guides to the A5 format (5.83 x 8.27 inches)



- 3 Insert the label sheet with the stickers facing down (labels and dot are on the reverse)\*

\*According to your printer, instructions may be different.