

FOCUS

EXCLUSIVE OFFERS & EXCITING NEW PRODUCTS

GREAT NEW OFFERS INSIDE:

Thermo Scientific™
Medifuge Centrifuge
(See page 27)

Liebherr GGU1500
Underbench Freezer
(See page 48)

NEW



See page 3...

20%
OFF

Eppendorf 5427 R Microcentrifuges

High speed, refrigerated
microcentrifuge for high
throughput research.
Cooled with natural
refrigerant (R290)

OHAUS Adventurer® Precision Balances

OHAUS Adventurer®
incorporates all of the
applications necessary
for routine weighing and
measurement activities

See page 18...

35%
OFF



WELCOME

FOCUS Autumn 2023 Edition

Welcome to another fantastic issue of FOCUS! Packed with exclusive offers on laboratory products from market leading brands. We also have some exciting NEW offers in this edition, including the Eppendorf 5427 R Microcentrifuges and the Liebherr GGU1500 Underbench Freezer. Speak to your local account manager to find out how these products can change your lab life for the better!

In addition to this issue, visit our website for supplementary 'FOCUS Extra' online offers, for even more great savings on many other fantastic products.

REMEMBER:

These offers are
EXCLUSIVE to SLS
and valid until
31st December 2023

Buy One, Get One TREE

Look out for products with the 'Buy One, Get One TREE' icon in our promotions. With every purchase of these products, we will plant a tree on your behalf in partnership with



KEY to product symbols:



Length of warranty



Sustainability



NEW product



KEY Highlights



Eppendorf Xplorer®
Pipettes
See page 4



IKA TWISTER
Universal Mixers
See page 25



Thermo Scientific™
Medifuge Centrifuge
See page 27



Mettler Toledo
Seven Direct pH/Ion/
Conductivity Meters
See page 38



Getinge Lancer ULTIMA
1300LX Washer/Dryer
Package
See page 45



Liebherr Mediline
Spark Free Refrigerator
and Freezer
See page 48

Eppendorf 5427 R Microcentrifuges



eppendorf



A high speed, refrigerated microcentrifuge for high throughput research. Cooled with natural refrigerant (R290) to protect your samples - and the planet.

- Rotor capacity: 48 × 1.5/2.0mL or 12 × 5.0mL
- Max. speed: 25,001 × g (16,220 RPM)
- Temperature range from -11°C to 40°C
- Large, brightly lit LCD display
- Timer: 5 secs to 9:59 hrs
- Dimensions (w × d × h): 31.9 × 54.0 × 25.4cm
- IVD versions comply with the requirements of the EU In Vitro Diagnostics Regulation (IVDR) 2017/746

Code	Description	List Price, €	Offer Price, €
F20206	5427 R without rotor	6858.00	5486.00
F20208	5427 R without rotor IVD	7199.00	5759.00
F20210	5427 R with rotor FA-45-48-11	7348.00	5879.00
F20212	5427 R with rotor FA-45-48-11 IVD	7716.00	6172.00
F20214	5427 R with rotor FA-45-30-11	7229.00	5784.00
F20216	5427 R with rotor FA-45-30-11 IVD	7589.00	6071.00

Eppendorf Research® Plus Pipettes



eppendorf

Eppendorf sets a new standard in pipetting. The ultra-light Eppendorf Research® plus pipette meets the highest needs in precision and accuracy - combined with ultimate ergonomics and increased flexibility.

- Light weight for ease of use and comfort
- Low tip-ejection forces for stress-free workflow
- Fully autoclavable to save time



Code	Channel	Volume Range, µL	Colour	List Price, €	Offer Price, €
F20238	8	0.5 to 10	Grey	945.00	757.00
F20242	8	10 to 100	Yellow	945.00	757.00
F20246	8	30 to 300	Orange	945.00	757.00
F20240	12	0.5 to 10	Grey	1035.00	828.00
F20244	12	10 to 100	Yellow	1035.00	828.00
F20248	12	30 to 300	Orange	1035.00	828.00

Eppendorf Xplorer® and Xplorer® Plus Pipettes



eppendorf

Designed to aspirate and dispense liquid volumes from 0.5µL to 10mL. Features an intuitive operating system and ergonomic design, supported by Eppendorf PhysioCare Concept®. The Xplorer® pipettes are the ideal instrument for applications that require precisely adjustable parameters, reproducible and accurate results and fatigue free pipetting.

- Function control soft keys with multi-function rocker and selection dial
- Innovative ejector
- Separate power socket with practical charging contacts
- Colour display
- Ergonomic display angle

Xplorer®



Code	Channel	Volume Range, µL	Colour	List Price, €	Offer Price, €
F13578	Single	0.5 to 10	Grey	767.00	614.00
F20218	Single	1 to 20	Grey	767.00	614.00
F13580	Single	5 to 100	Yellow	767.00	614.00
F20220	Single	10 to 200	Yellow	767.00	614.00
F13582	Single	15 to 300	Orange	767.00	614.00
F13584	Single	50 to 1000	Blue	767.00	614.00
F20222	Single	100 to 2500	Red	767.00	614.00
F13586	Single	200 to 5000	Purple	767.00	614.00
F13588	Single	500 to 10000	Turquoise	767.00	614.00
F13590	8	0.5 to 10	Grey	1132.00	906.00
F13592	8	5 to 100	Yellow	1132.00	906.00
F13594	8	15 to 300	Orange	1132.00	906.00
F13596	8	50 to 1200	Green	1132.00	906.00
F13598	12	0.5 to 10	Grey	1326.00	1061.00
F13600	12	5 to 100	Yellow	1326.00	1061.00
F13602	12	15 to 300	Orange	1326.00	1061.00
F13604	12	50 to 1200	Green	1326.00	1061.00

Xplorer® Plus

eppendorf

- Additional applications: aspirating, diluting, sequential dispensing and reverse pipetting
- Display of service intervals and reminder function
- Individual speed setting
- One-time programming of sequences
- Individual fixed volume setting
- Password protection



Code	Channel	Volume Range, µL	Colour	List Price, €	Offer Price, €
F13606	Single	0.5 to 10	Grey	928.00	738.00
F20224	Single	1 to 20	Grey	928.00	738.00
F13608	Single	5 to 100	Yellow	928.00	738.00
F20226	Single	10 to 200	Yellow	928.00	738.00
F13610	Single	15 to 300	Orange	928.00	738.00
F13612	Single	50 to 1000	Blue	928.00	738.00
F20228	Single	100 to 2500	Red	928.00	738.00
F13614	Single	200 to 5000	Purple	928.00	738.00
F13616	Single	500 to 10000	Turquoise	928.00	738.00
F13618	8	0.5 to 10	Grey	1365.00	1087.00
F13620	8	5 to 100	Yellow	1365.00	1087.00
F13622	8	15 to 300	Orange	1365.00	1087.00
F13624	8	50 to 1200	Green	1365.00	1087.00
F13626	12	0.5 to 10	Grey	1570.00	1256.00
F13628	12	5 to 100	Yellow	1570.00	1256.00
F13630	12	15 to 300	Orange	1570.00	1256.00
F13632	12	50 to 1200	Green	1570.00	1256.00
F20230	16	1 to 20	Pink	1754.00	1403.00
F20234	16	5 to 100	Yellow	1754.00	1403.00
F20232	24	1 to 20	Pink	1938.00	1551.00
F20236	24	5 to 100	Yellow	1938.00	1551.00

Eppendorf epT.I.P.S.® BioBased Reload Pipette Tips



eppendorf

The epT.I.P.S.® BioBased pipette tips make laboratory work significantly more sustainable without jeopardising experimental results. By using a second-generation bio-based polymer made from at least 90% renewable resources (e.g. waste and residues from vegetable oil refining or waste cooking oil), the product-related carbon footprint of these pipette tips was significantly reduced.

The reload variant saves up to 54% fossil based plastic compared to conventional racks, and significantly reduces the volume of laboratory waste. The reloads fit perfectly into the epT.I.P.S.® box 2.0.

**20%
OFF**



Code	Description	Volume Range, µL	Pack	List Price, €	Offer Price, €
F20142	epT.I.P.S. reloads, biopur, 40mm, grey	0.1 to 20	480 (5 trays x 96)	70.20	56.20
F20144	epT.I.P.S. reloads, biopur, 53mm, yellow	2 to 200	480 (5 trays x 96)	64.40	51.50
F20146	epT.I.P.S. reloads, biopur, 55mm, orange	20 to 300	480 (5 trays x 96)	64.40	51.50
F20148	epT.I.P.S. reloads, biopur, 71mm, blue	50 to 1000	480 (5 trays x 96)	64.40	51.50
F20150	epT.I.P.S. reloads, biopur, 76mm, green	50 to 1250	480 (5 trays x 96)	64.40	51.50
F20152	epT.I.P.S. reloads, biopur, 103mm, dark green	50 to 1250	480 (5 trays x 96)	64.40	51.50
F20172	ep Dualfilter T.I.P.S. reloads, PCR clean and sterile, 40mm, grey	0.1 to 10	960 (10 trays x 96)	208.00	166.00
F20174	ep Dualfilter T.I.P.S. reloads, PCR clean and sterile, 46mm, light grey	0.5 to 20	960 (10 trays x 96)	200.00	160.00
F20178	ep Dualfilter T.I.P.S. reloads, PCR clean and sterile, 53mm, yellow	2 to 20	960 (10 trays x 96)	200.00	160.00
F20180	ep Dualfilter T.I.P.S. reloads, PCR clean and sterile, 53mm, yellow	2 to 100	960 (10 trays x 96)	200.00	160.00
F20182	ep Dualfilter T.I.P.S. reloads, PCR clean and sterile, 55mm, yellow	2 to 200	960 (10 trays x 96)	200.00	160.00
F20184	ep Dualfilter T.I.P.S. reloads, PCR clean and sterile, 55mm, orange	20 to 300	960 (10 trays x 96)	200.00	160.00
F20186	ep Dualfilter T.I.P.S. reloads, PCR clean and sterile, 76mm, blue	50 to 1000	960 (10 trays x 96)	216.00	173.00
F20188	ep Dualfilter T.I.P.S. reloads, PCR clean and sterile, 103mm, dark green	50 to 1250	960 (10 trays x 96)	216.00	173.00
F20192	ep Dualfilter T.I.P.S. SealMax, reloads, biopur, 46mm, light gray	0.5 to 20	960 (10 trays x 96)	205.00	164.00
F20194	ep Dualfilter T.I.P.S. SealMax, reloads, biopur, 53mm, yellow	2 to 100	960 (10 trays x 96)	205.00	164.00
F20200	ep Dualfilter T.I.P.S. SealMax, reloads, biopur, 55mm, yellow	2 to 200	960 (10 trays x 96)	213.00	170.00
F20202	ep Dualfilter T.I.P.S. SealMax, reloads, biopur, 55mm, orange	20 to 300	960 (10 trays x 96)	205.00	164.00
F20204	ep Dualfilter T.I.P.S. SealMax, reloads, biopur, 76mm, blue	50 to 1000	960 (10 trays x 96)	224.00	179.00
F20162	Empty epT.I.P.S. box 2.0, epQuality, for epT.I.P.S. reloads	10 to 300	Each	36.27	28.99
F20164	Empty epT.I.P.S. box 2.0, epQuality, for epT.I.P.S. reloads	1000 to 1250	Each	38.48	30.81
F20170	Empty epT.I.P.S. box 2.0, epQuality, for epT.I.P.S. reloads	1250 to 5000	Each	43.03	34.45



Start Separation at Ease

with Centrifuge Solutions from Eppendorf

You deserve the best laboratory equipment to ensure that your separation tasks run smoothly every time. That's why our goal is to provide optimized solutions for you and your requirements: From microcentrifuges and benchtop centrifuges to high-speed floorstanding- as well as ultra-centrifuges, our extensive portfolio now offers comprehensive solutions in the areas of molecular biology, biochemistry and cell biology.

Complemented by a wide range of rotors, adapters and consumables, as well as service offerings, our portfolio supports now all of your separation applications.

With our now complete centrifuge portfolio we give you the promise of separation at ease, enabling you to focus on what matters most: your research.

Discover more!

www.scientificlabs.ie/Eppendorf-Centrifuges

Derma Shield Skin Barrier

Quickly sinks into skin and pharmaceutical grade moisturisers such as aloe vera and vitamin E are absorbed. Forms a breathable and waterproof shield that moisturises, nurtures and protects for 4 hours despite repeated washing. Prevents irritant contact dermatitis by providing an invisible, non-greasy and non-toxic barrier that protects all skin areas.

- CE marked medical device
- Skin breathes and perspires normally
- Clinically and laboratory tested
- Emergency protection against acids and alkalis

20%
OFF



Code	Description	Pack	List Price, €	Offer Price, €
F20252	Aerosol	24 x 50mL	337.00	269.00
F20254	Aerosol	12 x 150mL	322.00	257.00
F20256	Aerosol	6 x 500mL	322.00	257.00
F20258	Lotion	20 x 100mL	482.00	386.00
F20260	Lotion	6 x 1000mL	454.00	363.00

KIMTECH™

Looking for recyclable gloves?

You've found them!

Contact your SLS representative to learn
more about The RightCycle™ Programme.

www.scientificlabs.ie/kimberlyclark-RightCycle



Bimos Neon 2 Chair

10
YEARS

Neon is ideally equipped for industrial or laboratory use. It can be adjusted in every possible way to cater for different body sizes and weights, and the most varied activities. The seat automatically encourages the correct posture and upright, healthy sitting. Ergonomically designed with integrated pelvic support and rounded front edge of the seat. The upholstery element and the chair element are both individually configurable.

- With castors and aluminium base
- Synchronous mechanism
- Changeable upholstery elements
- Weight adjustment
- Seat depth adjustment
- Adjustable seat inclination and backrest adjustable in height



Code	Seat Height, mm	Upholstery Material	Colour	Offer Price, €
F18002	450 - 620	Artificial leather	Orange	653.00

Bimos Labsit Chairs and Stools

10
YEARS

Labsit meets all requirements of a laboratory chair with its hygienic design. It is easy to clean, has minimal joints, is resistant to disinfectants and solvents, has anti-bacterial and anti-microbial properties and is even suitable for use in cleanrooms and safety laboratories.

- Suitable for cleanrooms in air purity class 3, acc. to EN ISO 14644-1
- Meets the specifications of the GMP regulations
- Washable, resistant to disinfectants and robust
- Ergonomic construction
- Compact structure to save space
- Comfortable and wear resistant
- Seat height adjustable with gas spring



Code	Description	Seat Height, mm	Upholstery Material	Colour	Offer Price, €
F18008	Labsit stool with castors	450 - 650	Integral foam	Black	174.00
F18004	Labsit 2 chair with castors	450 - 650	Artificial leather	Orange	238.00
F18006	Labsit 4 chair with Stop & Go castors and foot ring	560 - 810	Integral foam	Blue	315.00

Gilson Pipetman® Manual Pipettes

3
YEARS

GILSON

Offering one of the lowest pipetting forces commercially available with a redesigned piston assembly system and high quality piston grease for comfortable pipetting. It relies on the legendary accuracy, precision, and reliability of the PIPETMAN® Classic, with improved pipetting comfort. Made of PVDF and stainless steel for premium durability.

The clip ejector allows for convenient access to serviceable parts.

**40%
OFF**



Code	Channel	Volume Range, µL	List Price, €	Offer Price, €
F13224	Single	0.2 - 2	322.00	194.00
F13226	Single	1 - 10	322.00	194.00
F13228	Single	2 - 20	322.00	194.00
F13230	Single	10 - 100	322.00	194.00
F13232	Single	20 - 200	322.00	194.00
F13234	Single	100 - 1000	322.00	194.00
F13236	Single	500 - 5000	322.00	194.00
F13238	Single	1000 - 10000	322.00	194.00
F16004	8	1 - 10	878.00	527.00
F16006	8	2 - 20	878.00	527.00
F16008	8	20 - 200	878.00	527.00
F16010	8	30 - 300	878.00	527.00
F16012	12	1 - 10	1024.00	615.00
F16014	12	2 - 20	1024.00	615.00
F16016	12	20 - 200	1024.00	615.00
F16018	12	30 - 300	1024.00	615.00

Heathrow Scientific



Economy Slide Boxes

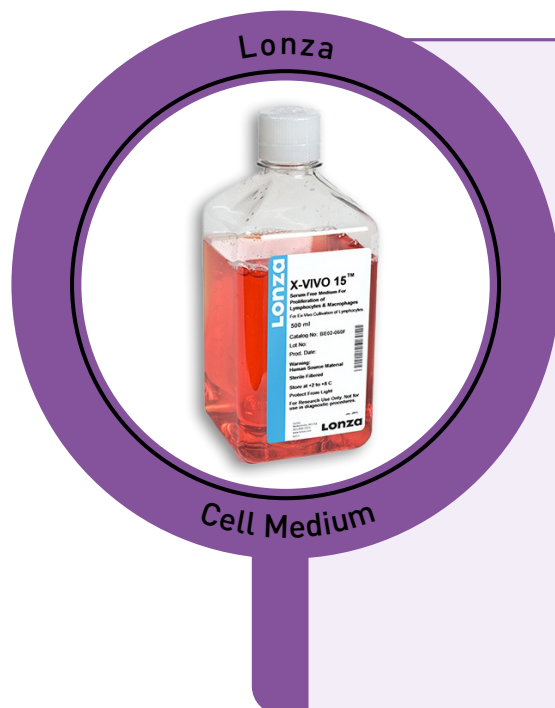
Heathrow Scientific Economy Slide Boxes

Polypropylene, holds standard slides (75 x 25mm and 3 x 1").
With slide identification card, no liner.

Code	Capacity	Colour	List Price, €	Offer Price, €
MIC3580	25 slides	Blue	15.85	6.34
MIC3582	25 slides	Red	15.85	6.34
MIC3584	25 slides	White	17.16	6.86
MIC3586	100 slides	Blue	23.95	9.58
MIC3588	100 slides	Red	23.95	9.58
MIC3590	100 slides	White	19.93	7.97

**60%
OFF**

OVER
40%
OFF



Lonza Cell Medium

Code	Description	Pack	List Price, €	Offer Price, €
F16266	Insect XPRESS™ protein-free cell medium with L-glutamine	1L	512.00	85.00
F16270	X-VIVO™ 15 serum-free hematopoietic cell medium with L-glutamine, gentamicin and phenol red	500mL	294.00	150.00
F20320	X-VIVO™ 15 serum-free hematopoietic cell medium with L-glutamine, gentamicin and phenol red	1L	504.00	204.00
F20322	X-VIVO™ 15 serum-free hematopoietic cell medium with L-glutamine, gentamicin, recombinant transferrin, and phenol red	1L	352.00	205.00

Gilson Pipetman® L Pipette Kits

3
YEARS

GILSON

A lightweight pipette with a handle that fits naturally in the hand. PIPETMAN® L features a patented volume locking system for safe, secure pipetting. These features, in combination with Gilson's latest lubricated piston assembly mean that PIPETMAN® L offers very light pipetting forces.

- Adjustable tip ejector button to adapt to both right and left handed users
- Clip mechanism allows easy and safe removal of tip ejector
- GLP features include 2D barcode for traceability
- Includes the 'Gilson Guide to Pipetting' handbook and the 'Two-minute Inspection Poster'

45%
OFF



Code	Description	Includes	List Price, €	Offer Price, €
F13240	Starter kit	P20, P200 and P1000 PIPETMAN® L pipettes, 2 racks DIAMOND tips, 3 SINGLE™ pipette holders and 3 plastic tip ejectors	1076.00	592.00
F13242	Micro volume kit	P2G, P10G, P100G PIPETMAN® L pipettes, 2 racks DIAMOND tips, 3 SINGLE™ pipette holders and 3 plastic tip ejectors	1076.00	592.00
F13190	Four pipette kit	P2G, P20G, P200G, P1000G PIPETMAN® L pipettes, 3 racks DIAMOND tips, 4 SINGLE™ pipette holders and 4 plastic tip ejectors	1399.00	770.00

Corning® Lambda™ EliteTouch™ Starter Pack

CORNING

Engineered to provide the highest level of ergonomics, accuracy, and precision. Features smooth plunger movement and extremely low pipetting forces to reduce wrist strain and fatigue (RSI). Coloured pushbuttons (included) can help define user or application for sample safety and lower risk of cross contamination.

- Ergonomic handle design for perfect fit for both right and left hand
- Convenient one-hand volume setting with auto-lock system
- 4-digit counter for greater precision, perfectly positioned for visibility at all times
- Fully autoclavable and UV resistant
- Easy in-lab calibration helps you quickly adjust your pipettor to various liquid types
- Individually tested and supplied with a certificate of quality

Includes:

4 x single channel pipettes (0.5 to 10µL, 2 to 20µL, 20 to 200µL, 100 to 1000µL), universal linear stand for 4 single channel pipettes, 3 x Corning® DeckWorks pipette tips (10µL, 200µL, 1000µL), 3 x coloured pushbuttons (4 sets)



40%
OFF

Code

F16130

List Price, €

1282.00

Offer Price, €

772.00

Corning®



Stripettor™ Ultra Pipette Controller

Corning® Stripettor™ Ultra Pipette Controller

2
YEARS

54%
OFF

For use with glass and plastic serological pipettes from 0.5 to 100mL. Supplied with universal power supply, three 0.2µm filters, 3 coloured nose pieces and wall hanger.

Code

F151058

List Price, €

416.00

Offer Price, €

190.00



SLS Select Biocleanse Disinfectant

UP TO
60% OFF

Wide spectrum microbiocide, pH neutral, alcohol-free.
Effective against all enveloped viruses e.g. HIV, HBV, HCV, coronaviruses.
Wipe size: 200 x 190mm, 200 wipes per tub or refill pouch.

Code	Description	Pack	List Price, €	Offer Price, €
F151360	Disinfectant wipe tub	6	147.00	58.50
F151361	Disinfectant wipes refill pouch	10	169.00	68.90
F151362	Disinfectant trigger spray bottle 500mL	20	234.00	142.00

SLS Lab Pro Pipettes

3 YEARS

The SLS Lab Pro pipettes offer superior quality at an affordable price. These are lightweight pipettes with a handle that fits naturally in the hand. A lubricated piston assembly offers very light pipetting forces.

- Adjustable tip ejector button to adapt to both right and left-handed users
- Clip mechanism allows easy and safe removal of tip ejector
- Fully autoclavable

Over
65% OFF

SLS LAB PRO



Code	Channel	Volume Range, µL	List Price, €	Offer Price, €
F151284	Single	0.2 - 2	400.00	137.00
F151285	Single	1 - 10	400.00	137.00
F151286	Single	2 - 20	400.00	137.00
F151287	Single	10 - 100	400.00	137.00
F151288	Single	20 - 200	400.00	137.00
F151289	Single	100 - 1000	400.00	137.00
F151290	Single	500 - 5000	403.00	137.00
F151291	Single	1000 - 10000	403.00	137.00
F151292	8	0.5 - 10	920.00	306.00
F151293	8	2 - 20	920.00	306.00
F151294	8	20 - 200	920.00	306.00
F151295	8	20 - 300	920.00	306.00
F151296	12	0.5 - 10	1058.00	358.00
F151297	12	2 - 20	1058.00	358.00
F151298	12	20 - 200	1058.00	358.00
F151299	12	20 - 300	1058.00	358.00

SLS Lab Basics Pipettes

3
YEARS



SLS LAB
BASICS

Single Channel:

- Ergonomic design ensuring light weight & soft plunger movement
- Click-stop system for volume selection
- Colour coded for easy identification
- Calibration conforms to EN-ISO 8655 with report enclosed with every pipette

Multi Channel:

- Smooth and light tip loading and ejection
- Leak free sealing of tips
- Manifold is easily removable, fully autoclavable and can rotate 360° for easy right or left hand operation

Up to
**70%
OFF**



Code	Channel	Volume Range, µL	List Price, €	Offer Price, €
F151300	Single	0.1 - 2.5	189.00	62.40
F151301	Single	0.5 - 10	189.00	62.40
F151305	Single	2 - 20	189.00	62.40
F151302	Single	5 - 50	189.00	62.40
F151303	Single	10 - 100	189.00	62.40
F151306	Single	20 - 200	189.00	62.40
F151304	Single	100 - 1000	189.00	62.40
F151307	Single	500 - 5000	225.00	70.20
F151308	Single	1000 - 10000	225.00	70.20
F151313	8	0.5 - 10	841.00	254.00
F151309	8	5 - 50	841.00	254.00
F151310	8	10 - 100	841.00	254.00
F151311	8	20 - 200	841.00	254.00
F151312	8	30 - 300	841.00	254.00
F151318	12	0.5 - 10	923.00	319.00
F151314	12	5 - 50	923.00	319.00
F151315	12	10 - 100	923.00	319.00
F151316	12	20 - 200	923.00	319.00
F151317	12	30 - 300	923.00	319.00

Portwest®



PW30 Safety Glasses

Portwest® PW30 Safety Glasses

- CE certified
- Can be used over prescription glasses
- 99% UV protection
- EN 170 (2C-1.2) and EN 166 (1 F)

**30%
OFF**

Code	List Price, €	Offer Price, €
F20262	5.66	3.97

ClearLine® Low Binding Sterile Filter Pipette Tips

- RNase, DNase free and non-pyrogenic sterile filter tips
- Low binding surface
- 45mm in length
- Compatible with many pipette brands
- Supplied in rack: hinged and stackable with a colour coded lid

Over
**60%
OFF**

ClearLine®



Code	Volume Range, µL	Tip Length, mm	Colour	Pack	List Price, €	Offer Price, €
F20276	0.1 to 10	45	Red	960 (10 x 96)	135.00	49.40
F20278	1 to 20	58	Yellow	960 (10 x 96)	144.00	52.00
F20280	1 to 100	51	Yellow	960 (10 x 96)	144.00	52.00
F20282	1 to 200	59	Yellow	960 (10 x 96)	144.00	52.00
F20284	20 to 200	78	Yellow	768 (8 x 96)	144.00	52.00
F20286	1 to 300	78	Green	768 (8 x 96)	144.00	52.00
F20288	50 to 1250	102	Blue	768 (8 x 96)	148.00	53.30

Brand accu-jet® S Pipette Controllers



Precise pipetting of large and small volumes is easy due to single handed control of pipetting speed for fast, powerful aspiration, accurate meniscus setting, or precise dispensing of small volumes. The packaging contains more than 90% recycled material, and manufacturing is powered from renewable sources.

- For glass and plastic pipettes from 0.1 to 200mL
- Fills a 25mL pipette at maximum motor speed in only 3 seconds
- Battery with intelligent charging technology and two colour charge indicator
- Universal AC adapter included

40%
OFF



Code	Colour	List Price, €	Offer Price, €
F20004	Anthracyte grey	733.00	439.00
F20006	Berry	733.00	439.00
F20008	Petrol blue	733.00	439.00
F20010	Amethyst purple	733.00	439.00

Accuris Aspire Laboratory Aspirator

2 YEARS

Benchmark
Scientific

An ideal choice for a wide range of laboratory aspirating applications, including removal of media from tissue culture vessels or plates, and supernatants. An ergonomic, hand held controller is included, and holds standard 200 to 300µL disposable pipette tips.

- Accepts Pasteur and serological pipettes
- Hand held controller and adapters fully autoclavable
- Fully adjustable vacuum pressure
- Comes complete with: base with internal vacuum pump, 2L polycarbonate collection bottle, antibacterial/hydrophobic filter, silicone tubing, handheld vacuum controller, adapter for 200µL pipette tips, 40mm fine tip stainless steel adapter

50% OFF



Code	Aspiration, mL/sec	Flow Rate, L/min	Vacuum Range, mbar	List Price, €	Offer Price, €
F151257	14	15	-30 to -750	1836.00	918.00

SLS Select Media Bottles

- Perfect for everyday laboratory use
- Suitable for many applications, such as storage of culture media
- Made from high quality borosilicate glass 3.3 to ISO 3585
- Heat and chemical resistance
- GL45 blue polypropylene cap and pouring ring included
- White graduations and marking spot
- Sloped shoulders for easy pour
- Standards to ISO 4796-1
- Autoclavable

Up to
70% OFF



Code	Volume, L	Pack	List Price, €	Offer Price, €
F151342	0.1	10	45.50	13.85
F151343	0.25	10	54.60	16.51
F151344	0.5	10	63.70	19.50
F151345	1	10	88.40	31.59
F151346	2	10	163.00	59.50
F151347	5	Each	176.00	63.70
F151348	10	Each	302.00	103.00
F151349	20	Each	462.00	169.00

SLS Lab Basics Magnum Microscopes

1
YEAR

SLS LAB
BASICS

Based on a robust T shaped base design to ensure maximum stability with modern ergonomic features to allow for prolonged routine viewing.

- Eyepiece: 10x/20mm wide field
- Available with plan-achromatic and plan-achromatic positive phase objectives (CCS optics): 4X, 10X; 40X spring loaded, 100X (oil) spring loaded
- Pre-condenser with field diaphragm
- Condenser: brightfield Abbe NA 0.9 (1.25 oil), iris diaphragm and filter holder, rack and pinion focussing adjustment
- Stage: 210 x 410mm, 90mm transversal movement and 60mm longitudinal, nonius reading up to 0.1mm
- 20W/6V halogen bulb

Up to
**40%
OFF**



Code	Description	List Price, €	Offer Price, €
F18472	Binocular with plan-achromatic objectives	2176.00	1281.00
F18474	Binocular with positive plan-achromatic phase contrast objectives	2843.00	2262.00
F18476	Trinocular with plan-achromatic objectives	2259.00	1443.00
F18478	Trinocular with positive plan-achromatic phase contrast objectives	3104.00	2457.00

SLS Lab Basics Tablet Microscope Camera

SLS LAB
BASICS

Tablet camera especially designed for microscopy applications. Comes with a high-definition 9.7" colour LCD touchscreen and is equipped with software that allows the user to preview an image, set the white balance, capture images and videos as well as having measurement and annotation capabilities.

- Integral C-mount fitting
- RK3066 dual core 1.5Hz CPU touch screen operation, can be used as a small computer
- Keyboard and mouse can also be used to operate
- Includes Wi-Fi and Bluetooth wireless networking for easy file exchange
- Storage: external SD memory card - up to 32GB

**57%
OFF**



Code	CPU	Memory	Camera	List Price, €	Offer Price, €
F151127	RK3066 dual-core 1.5Hz	ROM 2GB; RAM 1GB DDR3	15fps at 1024 x 768; 1/2.5 (4:3) 5Mpx CMOS	1958.00	845.00

OHAUS Adventurer® Precision Balances

2
YEARS



OHAUS Adventurer incorporates all of the applications necessary for routine weighing and measurement activities. With a wide viewing angle colour touchscreen, GLP/GMP compliance capabilities, and two USB ports.

- Internal calibration with OHAUS AutoCal™ automatic calibration system
- 1mg models have a two piece, top-mounted draftshield with doors that open wide, providing ample room for sample placement
- 0.01g and 0.1g models feature large weighing pans

35%
OFF



Code	Model	Capacity, g	Readability, g	Calibration	Pan Dims, mm	List Price, €	Offer Price, €
F16046	AX223	220	0.001	Internal	Ø 130	2379.00	1547.00
F16048	AX223/E	220	0.001	External	Ø 130	1970.00	1281.00
F16052	AX423	420	0.001	Internal	Ø 130	2622.00	1704.00
F16054	AX423/E	420	0.001	External	Ø 130	2205.00	1433.00
F16058	AX523	520	0.001	Internal	Ø 130	3124.00	2031.00
F16060	AX523/E	520	0.001	External	Ø 130	2713.00	1764.00
F16064	AX422	420	0.01	Internal	175 x 195	1927.00	1252.00
F16066	AX422/E	420	0.01	External	175 x 195	1496.00	972.00
F16068	AX822	820	0.01	Internal	175 x 195	2129.00	1385.00
F16070	AX822/E	820	0.01	External	175 x 195	1719.00	1117.00
F16072	AX1502	1520	0.01	Internal	175 x 195	2352.00	1529.00
F16074	AX1502/E	1520	0.01	External	175 x 195	1941.00	1261.00
F16078	AX2202	2200	0.01	Internal	175 x 195	2393.00	1556.00
F16080	AX2202/E	2200	0.01	External	175 x 195	1983.00	1288.00
F16084	AX4202	4200	0.01	Internal	175 x 195	2570.00	1671.00
F16086	AX4202/E	4200	0.01	External	175 x 195	2178.00	1416.00
F16090	AX5202	5200	0.01	Internal	175 x 195	3124.00	2031.00
F16094	AX2201	2200	0.1	Internal	175 x 195	1820.00	1183.00
F16096	AX2201/E	2200	0.1	External	175 x 195	1434.00	932.00
F16098	AX4201	4220	0.1	Internal	175 x 195	2122.00	1379.00
F16100	AX4201/E	4220	0.1	External	175 x 195	1710.00	1112.00
F16102	AX8201	8200	0.1	Internal	175 x 195	2323.00	1511.00
F16106	AX8201/E	8200	0.1	External	175 x 195	1906.00	1239.00

SLS Lab Pro SK-i Series Precision Balances

5 YEARS

SLS LAB PRO

- Single range, high resolution 1/6,000 to 1/30,000
- LCD display with backlight
- RS-232C as standard
- Auto-power off function
- HI/OK/LO comparator indication
- Counting and percentage mode
- Multi-unit: g, pieces, %, ounce, lb, ozt, ct, mom, dwt, GN
- Optional Ni-MH rechargeable battery (metal hydrate)
- WinCT as standard
- ACAI counting function
- Dims, w x d x h, mm: 190 x 218 x 551

Over
**35%
OFF**



Code	Capacity, g	Readability, g	Pan Dims, mm	List Price, €	Offer Price, €
F16396	200	0.01	Ø 110	393.00	247.00
F16398	300	0.01	Ø 110	469.00	293.00
F16400	400	0.01	Ø 110	685.00	373.00
F16402	600	0.01	Ø 110	1083.00	593.00
F16404	1200	0.1	133 x 170	369.00	230.00
F16406	2000	0.1	133 x 170	393.00	244.00
F16408	3000	0.1	133 x 170	530.00	302.00
F16410	4000	0.1	133 x 170	723.00	373.00
F16412	6000	0.1	133 x 170	692.00	429.00
F16414	6000	1.0	133 x 170	420.00	244.00
F16416	12000	1.0	133 x 170	655.00	339.00

Portwest®



C865 White Howie Lab Coats

Portwest® C865 White Howie Lab Coats

Ring stud front for easy opening with 3 pockets for ample storage. Premium stain resistant finish repels oil, water and grime. Polycotton; 65% polyester, 35% cotton. More sizes available on our website.

**50%
OFF**

Code	Size	List Price, €	Offer Price, €
F20270	Small	39.00	19.49
F20272	Medium	39.00	19.49
F20274	Large	39.00	19.49

OHAUS Adventurer® Analytical Balances

2
YEARS



OHAUS Adventurer® incorporates all of the applications necessary for routine weighing and measurement activities. With a wide viewing angle colour touchscreen, GLP/GMP compliance capabilities, two USB ports, and much more, Adventurer is the most complete balance in its class.

- Fast stabilisation and reliable operation
- Internal calibration with OHAUS AutoCal™ automatic calibration system
- Two piece, top-mounted draftshield with doors that open wide, providing ample room for sample placement
- Dims, w x d x h: 354 x 230 x 340mm
- Pan Ø: 90mm

**35%
OFF**



Code	Model	Capacity, g	Readability, mg	Calibration	List Price, €	Offer Price, €
F16030	AX124	120	0.1	Internal	3367.00	2189.00
F16032	AX124/E	120	0.1	External	2977.00	1936.00
F16036	AX224	220	0.1	Internal	3515.00	2285.00
F16038	AX224/E	220	0.1	External	3145.00	2044.00
F16042	AX324	320	0.1	Internal	3575.00	2324.00



Portwest® PW31 Contoured Safety Glasses

- Anti-scratch coating
- Lightweight and comfortable
- 99% UV protection
- EN 166 1F

**30%
OFF**

Code	List Price, €	Offer Price, €
F20264	7.07	4.95



National Diagnostics Histology Clearing Agent

OVER
**40%
OFF**

- Rapid clearing without the toxic hazards of Xylene
- Compatible with most popular mounting media
- Superior results with low citrus odour
- Biodegradable: natural product with food grade rating worldwide

Code	Description	Pack	List Price, €	Offer Price, €
F13532	Histo-Clear	1 gallon	230.00	127.00
F20326	Histo-Clear	5 gallon	1131.00	634.00
F13534	Histo-Clear II	1 gallon	160.00	84.60
F20324	Histo-Clear II	5 gallon	654.00	358.00

SLS Lab Pro SM Series Micro Analytical Balances

5
YEARS



The SLS Lab Pro SM Series of balances have been developed for high end micro weighing with the automatic elimination of static electricity at a competitive price. A built in fanless ioniser eliminates static and a large weighing chamber with interlockable slide doors allows operation with either hand.

- One touch automatic calibration
- Internal data memory function for up to 200 sets of data
- GLP/GMP/GCP/ISO compliant output
- Built-in temperature, humidity, and atmospheric pressure sensors
- RS-232C and Quick USB interfaces as standard
- AD-1688 weighing data logger as standard

**49%
OFF**



Code	Capacity, g	Readability, mg	Pan Dims, mm	List Price, €	Offer Price, €
F14386	22	0.001	25	15691.00	7943.00
F14388	5.1/22	0.001/0.01	25	13926.00	7046.00
F14390	250	0.01	90	7554.00	3822.00
F14392	220	0.1	90	4952.00	2503.00
F14394	320	0.1	90	5374.00	2717.00
F14396	520	0.1	90	5758.00	2912.00

OHAUS MB90 and MB120 Moisture Analysers

2 YEARS



Geared to increase precision and efficiency in the lab, these moisture analysers feature a precisely controlled halogen heating system.

MB90 is ideal for routine moisture analysis applications. It begins to dry samples in seconds and performs up to 40% faster than traditional infrared methods, providing fast, precise results that you can rely on.

MB120 is designed for professional moisture analysis with advanced features including a temperature guide which analyses a sample to determine optimum drying temperature and a methods library that can store up to 100 methods for faster testing.

- Readability: 0.001g
- Pan dims: Ø 90mm



Code	Model	Capacity, g	Temp Range, °C	List Price, €	Offer Price, €
F20074	MB90	90	40 to 200	3587.00	2331.00
F20076	MB120	120	40 to 230	5209.00	3387.00

OHAUS MB23 and MB25 Moisture Analysers

2 YEARS



Provides precise moisture content determination at an unbeatable value. With a large backlit LCD display and standard RS232 port.

- 3 shut off criteria (manual, timed or auto)
- 50° to 160°C heating range (5°C increments)
- Dims: 280 x 127 x 165mm



Code	Model	Heat Source	Capacity, g	Readability, g	List Price, €	Offer Price, €
F20068	MB23	Infrared	110	0.01	1589.00	1032.00
F20070	MB25	Halogen	110	0.005	2178.00	1416.00

OHAUS MB27 Basic Moisture Analyser

2
YEARS



The MB27 basic moisture analyser combines high quality and durable construction into a sleek, compact design. The MB27 offers dependable, accurate results for a wide variety of moisture analysis applications.

- Backlit LCD display and RS232 port
- 3 shut off criteria (manual, timed or auto)
- 50° to 160°C heating range (5°C increments)
- Dims: 280 x 127 x 165mm



35%
OFF

Code	Heat Source	Capacity, g	Readability, g	List Price, €	Offer Price, €
F20072	Halogen	90	0.001	2330.00	1515.00

OHAUS Achiever™ 5000 Overhead Stirrers

2
YEARS



Powerful mixing and constant speed is assured with the brushless motor and torque compensation technology - delivering accurate, controlled stirring of viscous liquids with quiet operation.

- Bright LED digital display for speed, real time torque tendency LED indicator bar, and integrated timer
- Sealed aluminium housing with IP54 ingress protection rating
- Keyless chuck for simple, one-hand operation
- Simple knob control and lock button to prevent unintentional setting changes
- Full protection for overload, overtemperature and overcurrent conditions

35%
OFF



Code	Description	Speed Range, RPM	Capacity, L	Sample Viscosity, mPa·s	List Price, €	Offer Price, €
F151086	e-A51ST020	30-2000	25	10000	1274.00	828.00
F151087	e-A51ST040	30-2000	25	25000	1364.00	887.00
F151088	e-A51ST060	30-2000	40	50000	1544.00	1004.00
F151089	e-A51ST100	30-1300	100	70000	2150.00	1398.00
F151090	e-A51ST200	6-400; 30-2000	100	100000	2477.00	1609.00

SLS Lab Basics Mini Vortex Mixer

5 YEARS



A simple, touch start operation enables exceptional mixing performance with one handed operation, and shaking stops when the tube is lifted.

- Non-slip feet ensure the unit stays in place
- Made from durable ABS and silicone materials to resist most commonly used chemicals
- Quiet operation with low vibration, noise level (full speed, unloaded): 53dB
- Can be used with tubes ranging from 2 to 50mL
- Supplied with replacement silicone cap and universal power adapter



52% OFF

Code	Speed, RPM	Dims, w x d x h, mm	Weight, kg	List Price, €	Offer Price, €
F14982	4500 (fixed)	110 x 130 x 75	0.9	237.00	114.00

SLS Lab Basics Mini Magnetic Stirrer

5 YEARS



Ideal for routine stirring applications.

- Quiet operation with low vibration, noise level (full speed, unloaded): 53dB
- Low-profile design with a small footprint
- Made from an ABS and PC blend that is chemical resistant and easy to clean
- Supplied with 2 stir bars (9 x 35mm) and universal power adapter

54% OFF



Code	Capacity, L	Speed Range, RPM	Dims, w x d x h, mm	Weight, kg	List Price, €	Offer Price, €
F14980	3	200 - 2200	132 x 183 x 47	0.447	221.00	101.00

IKA TWISTER Universal Mixers

2
YEARS

IKA®

TWISTER is a universal and compact mixing device with magnetic drive. TWISTER is a powerful single-position magnetic stirrer, by connecting additional TWISTER stirring units, it can be expanded to a multi-position magnetic stirrer with up to 30 stirring positions. The stirring positions can be controlled either separately or simultaneously.

- The high protection class IP 66 allows operation under harsh conditions
- Intuitive and chemically resistant 360° LED glass display
- For mixing up to 5L at a maximum speed of 3000RPM and a viscosity of up to 500mPas
- Each set contains TWISTER mixer (1, 2, 3 or 4), power supply and mixing stirring bars

30%
OFF



Code	Description	List Price, €	Offer Price, €
F19188	TWISTER set 1	550.00	385.00
F19190	TWISTER set 2	1032.00	723.00
F19192	TWISTER set 3	1515.00	1061.00
F19194	TWISTER set 4	1996.00	1398.00

IKA Lab Dancer Vortex Mixer

2
YEARS

IKA®

Small, compact and reliable test tube shaker with a touch function, designed for mixing small sample tubes up to 30mm diameter.

- Fixed speed
- Includes light 12V power pack set
- Upper casing and the test tube surface are made from inert plastic, bottom section is a coated, zinc die-casting
- Protection class IP40

50%
OFF



Code	Speed, RPM	Orbit, mm	Dims, w x d x h, mm	List Price, €	Offer Price, €
F19196	2800 (fixed)	4.5	100 x 100 x 70	493.00	247.00

SLS Lab Pro VelociRuptor V2 Microtube Homogeniser

1
YEAR



Completely lyses, grinds and homogenises a broad variety of biological samples. The stainless steel tube carrier subjects up to 24 samples to an optimised, high speed, 3D motion, producing high energy impacts between the samples and micro-beads to release cellular contents. After homogenisation, samples can be centrifuged and the supernatant collected for further processing.

46%
OFF



- Eliminates the cross contamination associated with hand held homogenisers
- Faster and more effective than tissue grinders
- 50 programme memory
- Optional 12 x 5mL rotor for larger sample volumes

Code	Speed Range, m/s	Dims, w x d x h, mm	Supplied with	List Price, €	Offer Price, €
F10634	4.0 to 7.0	280 x 360 x 385	24 x 2mL tube rotor	8471.00	4576.00

Benchmark MultiTherm™ Touch Vortex Mixer

2
YEARS



The MultiTherm™ Touch features a broad temperature range to meet applications from denaturation of DNA to keeping samples cold at the end of a protocol. A full colour touch screen, expanded speed range, greater programming flexibility and a heated lid option are just a few of the upgraded features available.

32%
OFF

- Broad temperature and speed range to meet a variety of applications
- Adjustable ramp rates
- Preheat function
- Clockwise/counterclockwise mixing
- Multiple block options for plates and tubes up to 50mL (must be purchased separately)



Code	Speed Range, RPM	Timer	Dims, w x d x h, mm	List Price, €	Offer Price, €
F19442	200 to 3000	1sec to 99.99hrs or continuous	160 x 320 x 220	5156.00	3506.00

Thermo Scientific™ Medifuge Centrifuge

2
YEARS

Thermo
SCIENTIFIC

With the Medifuge small benchtop centrifuge, you can program up to 4 sets of custom run parameters to easily and quickly perform your routine protocols. The innovative DualSpin lightweight 8-place rotor features a unique hybrid design with interchangeable fixed angle and swinging buckets, and is able to accommodate 1.4mL to 15mL tubes with two spacer options. Run common clinical IVD blood tubes, gel tubes, 10mL standard syringes and 15mL conical tubes. Conforms to the latest clinical and safety standards, such as UL, CE and IVD.

Packages includes:

- Medifuge small benchtop centrifuge
- DualSpin rotor body
- 8 x fixed angle buckets
- 8 x swinging buckets
- 8 x green/short spacers
- 8 x yellow/long spacers



**37%
OFF**

Code	Speed Range, RPM	Timer	Display	Dims, w x d x h, mm	List Price, €	Offer Price, €
F20038	300 to 4900	1 to 99mins	LCD	325 x 450 x 240	2105.00	1326.00

Benchmark MC-24™ Touch High Speed Microcentrifuge with COMBI-Rotor™

2
YEARS

Benchmark
Scientific

Benchmark's MC-24™ Touch is the first microcentrifuge in its class to feature touch screen control. It also offers high speed and a unique COMBI-Rotor™ that accepts both standard microtubes (1.5 / 2.0mL) and PCR tubes/strips (0.2mL) without additional adapters.

- Full colour touch screen shows actual speed along with set and remaining time
- Up to 9 speed / time profiles can be stored in memory
- mySpin™ 1 button program recall
- Unique air-flow system, keeps samples cool
- Optional rotor/adapters available

**50%
OFF**



Code	Max Speed, RPM	Max Speed, x g	Dims, w x d x h, mm	Weight, kg	List Price, €	Offer Price, €
F151253	13500	16800	230 x 305 x 197	6.4	3661.00	1830.00

SLS Flowgen Plate Spinner

2
YEARS



Rapidly spin down droplets in PCR or microplates to improve PCR yields or give more consistent assay results. The swing out rotor has two plate carriers that rest at a 75° angle. This allows plates to be inserted confidently without sealing tapes or caps. Most samples can be spun down in less than 20 seconds.

- Unique swing-out rotor design prevents spillage
- Accepts most types of PCR plates
- Capacity: 2 x PCR plates (when stacking skirted PCR plates, max. capacity is 4 plates);
2 x microplates



Code	Max Speed, RPM	Max Speed, x g	Dims, w x d x h, mm	List Price, €	Offer Price, €
F14352	2550	600	230 x 260 x 197	1242.00	745.00

Nordic Lab



Undercounter Freezer

Nordic Lab ULT U100 -86°C Undercounter Freezer

Temperature logger with USB port, high/low temperature and door alarms, with 48h battery backup. Stainless steel inner, galvanised pre-coated steel outer.

35%
OFF

Code	Capacity, L	Temp Range, °C	Ext Dims, w x d x h, mm	List Price, €	Offer Price, €
FRE3800	93	-60 to -86	595 x 690 x 825	8896.00	5782.00



Corning® LSE™ Mini Microcentrifuge

Includes an 8-place rotor for 1.5/2.0mL tubes and adapters for 0.5/0.4mL and 0.2mL tubes. 4-place rotor for PCR strip tubes also included. Fixed speed: 6000RPM / 2000 × g.

**36%
OFF**

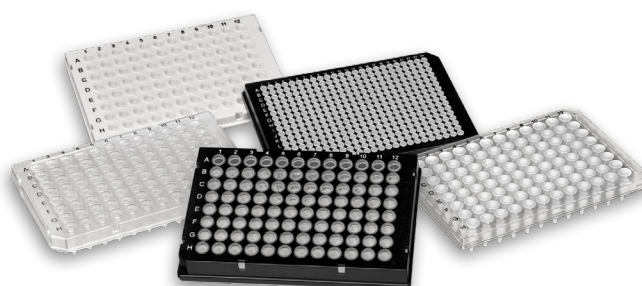
Code	Dims, w x d x h, mm	List Price, €	Offer Price, €
F151061	148 x 174 x 122	298.00	191.00

SLS Lab Pro PCR Plates



Two component design helps prevent evaporation due to compromised seal integrity common with one component PCR plates. The individual polypropylene wells are set into a rigid polycarbonate frame.

- Thin-walled reaction tubes made from 100% virgin medical grade polypropylene
- Ultra-rigid polycarbonate frames provide full compatibility with automated systems

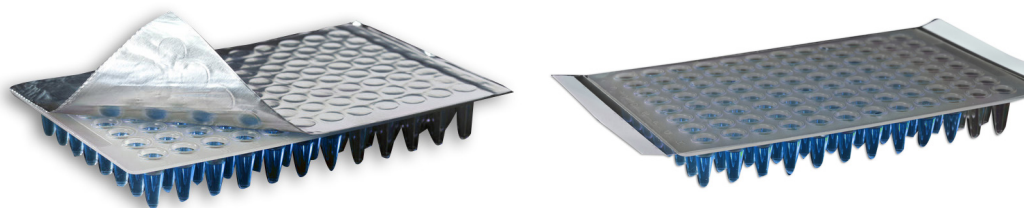


Over
**60%
OFF**

Supplied in packs of 50

Code	Description	No. of Wells	Well Volume, µL	Colour	List Price, €	Offer Price, €
F18260	Fully skirted, low profile	96	200	Black frame clear tubes	389.00	150.00
F18262	Fully skirted, low profile	96	200	Black frame white tubes	389.00	134.00
F18264	Fully skirted, low profile, high sensitivity tubes	96	200	Black frame white tubes	417.00	143.00
F18266	Fully skirted, low profile	96	200	White frame clear tubes	389.00	134.00
F18268	Fully skirted, low profile	96	200	White frame white tubes	389.00	134.00
F18270	Fully skirted, low profile, high sensitivity tubes	96	200	White frame white tubes	417.00	143.00
F18272	Semi-skirted, Roche, low profile	96	200	Clear frame clear tubes	389.00	134.00
F18274	Semi-skirted, Roche, low profile	96	200	Clear frame white tubes	389.00	134.00
F18276	Semi-skirted, Roche, low profile	96	200	White frame white tubes	389.00	134.00
F18278	Semi-skirted, Roche, low profile, high sensitivity tubes	96	200	White frame white tubes	417.00	143.00
F18280	Semi-skirted, universal, standard profile	96	300	Clear frame clear tubes	389.00	134.00
F18282	Semi-skirted, universal, standard profile	96	300	Clear frame white tubes	389.00	134.00
F18284	Semi-skirted, universal, standard profile, high sensitivity tubes	96	300	Clear frame white tubes	417.00	143.00
F18286	Semi-skirted, ABI, standard profile	96	300	Clear frame clear tubes	389.00	134.00
F18288	Semi-skirted, ABI, standard profile	96	300	Clear frame white tubes	389.00	134.00
F18290	Fully skirted	384	0.45	Black frame clear tubes	417.00	143.00
F18292	Fully skirted	384	0.45	Black frame white tubes	417.00	143.00
F18294	Fully skirted, Roche	384	0.45	White frame white tubes	452.00	150.00

SLS Select Microplate Sealing Film



Code	Description	Application	Dims, w x l, mm	Pack	List Price, €	Offer Price, €
F18130	Optically clear film, heat sealing, peelable	qPCR and optical applications	78 x 125	100	63.70	34.78
F18132	Optically clear film, heat sealing, peelable	qPCR and optical applications	78 x 500000	Roll	619.00	343.00
F18134	Optically clear film, heat sealing, non peelable	qPCR, optical applications and storage	78 x 125	100	59.80	35.28
F18136	Optically clear film, heat sealing, non peelable	qPCR, optical applications and storage	78 x 610000	Roll	711.00	384.00
F18138	Optically clear film, heat sealing, pierceable	PCR, qPCR and optical applications	78 x 125	100	58.50	34.19
F18140	Optically clear film, heat sealing, pierceable	PCR, qPCR and optical applications	78 x 610000	Roll	671.00	363.00
F18142	Foil, heat sealing, peelable	PCR and low temperature storage	78 x 125	100	54.60	32.37
F18144	Foil, heat sealing, peelable	PCR and low temperature storage	78 x 610000	Roll	658.00	363.00
F18146	Transparent film, strong adhesive	PCR and optical applications	80 x 135	100	173.00	66.70
F18148	Optically clear film, pressure activated adhesive, peelable	qPCR and other imaging techniques	80 x 140	100	140.00	84.20
F18150	Transparent film, low strength adhesive, peelable	Short term storage and ELISA	80 x 135	100	53.30	31.20
F18152	Aluminium foil, strong adhesive, peelable, pierceable	PCR	80 x 130	100	126.00	65.70

Accuris SmartSeal™ Automated Plate Sealer



Provides fast, reproducible sealing of microplates. The SmartSeal™ ensures uniform sealing of all wells and consistency from one plate to the next. With digital control over all parameters the SmartSeal™ is capable of accepting a wide range of plate types and heights.

- Adjustable time, temperature and pressure for optimised sealing
- Compatible with deep well (storage) plates up to 48mm tall, assay plates, PCR plates (skirted, semi-skirted and non-skirted), polypropylene, polystyrene or polyethylene plates, and foil or polymer (transparent) seals



Code	Temp Range, °C	Dims, w x d x h, mm	Weight, kg	List Price, €	Offer Price, €
F19006	80 - 200	178 x 370 x 330 cm	9.5	6104.00	3968.00

Accuris SmartReader™ 96 Microplate Absorbance Reader

Benchmark
Scientific

**48%
OFF**

The Accuris SmartReader™ 96 is a convenient stand alone reader with a 7 inch touch screen, intuitive software and graphical interface. Offers precise temperature control for incubation of plates during processing. Temperature can be maintained at 5°C above ambient to 50°C. Comes complete with 4 popular filters: 405, 450, 492 and 630nm, with 26 additional filters available separately.

- 8 channel vertical optical path, with zero dispersion
- Integrated, multi-speed plate shaker
- USB port allows quick and easy saving of data files to a USB drive
- Data port can be used for connecting a computer or basic printer

This item may incur an additional delivery charge



Code	Absorbance Range, A	Wavelength Range, nm	List Price, €	Offer Price, €
F16194	0.0 to 4.000	340 to 750	9832.00	5113.00

Accuris SmartReader™ UV-Vis Microplate Absorbance Reader

Benchmark
Scientific

**25%
OFF**

The Accuris SmartReader™ UV-Vis microplate reader has been designed with ease-of-use and fast results in mind. The large 10 inch touch screen control panel is extremely user-friendly and allows for fast set up of new protocols, and modifying or running existing protocols. The monochromator-based optical system allows for precise selection of wavelengths with no filters required.

- Accepts both 96 and 384 well plates
- No PC or special software required
- USB port for flash drive data transfer

This item may incur an additional delivery charge



Code	Temp Range, °C	Wavelength Range, nm	List Price, €	Offer Price, €
F18012	5 to 45	200 to 1000	20766.00	15575.00

PCRmax Alpha Cyclor 1 Thermal Cyclor

2 YEARS

PCRmax[®]

The interface is Android based, with a large HD touchscreen for responsive control of the software. Ideal for multi user environments, users can make any USB device their own login key allowing them to use multiple systems in different locations like a personal unit. Programs can be easily stored, transferred, protected and locked while running.

25% OFF

- Remote monitoring can be set to check system performance and notify end user of abnormality
- Active sample cooling for sharper amplification and minimal non-specific amplification
- Report generated on run conditions and state following completion of protocol
- Gradient function – allowing for simplified temperature optimisation



Code	Supplied with	Dims, w x d x h, mm	List Price, €	Offer Price, €
F13158	1 x 96 well block	260 x 430 x 200	4818.00	3614.00

Syngene InGenius 3 Gel Documentation System

3 YEARS

SYNGENE
A DIVISION OF THE SYNOPTICS GROUP

Using a compact InGenius 3 gel documentation system, you're in control. You can image your choice of dyes and stains by choosing UV, blue or white lighting options. The system's GeneSys software selects the right lighting and filters for you, making it easy to image fluorescent ethidium bromide or SYBR[®] Safe DNA gels and protein gels stained with Coomassie blue or silver. The InGenius 3 offers a 3m pixel camera and can produce images with 16 bit image depth. A manual zoom lens and manual filter drawer (includes a UV filter) completes the package. Controlled by GeneSys application driven image capture software and comes complete with unlimited copies of GeneTools analysis software.

10% OFF
+ FREE
Transilluminator

- 3m pixel camera - detect nanogram amounts on gels (up to 20 x 20cm)
- High resolution

FREE slimline, single wavelength slide-out transilluminator with runners - 20x20cm, 302nm



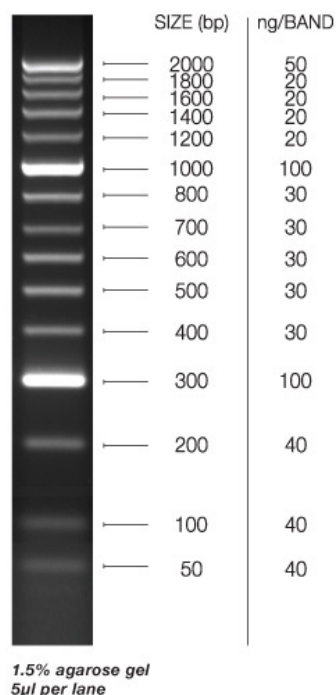
This item may incur an additional delivery charge

Code	Sensor Size	Resolution	Dims, w x d x h, mm	List Price, €	Offer Price, €
F14632	1/3 inch	3 million pixels	400 x 375 x 620	4948.00	4453.00

Meridian Bioscience HyperLadder™

Ready-to-use molecular weight marker.

- Broad size range
- Easy to orientate – several brighter reference bands
- Stable – can be stored at room temperature for up to 6 months
- Supplied with loading dye – for loading sample DNA



meridian BIOSCIENCE®
LIFE DISCOVERED. LIFE DIAGNOSED.

20%
OFF

Code	Description	Pack	List Price, €	Offer Price, €
F20318	HyperLadder™ 25bp	100 lanes	159.00	127.00
F20298	HyperLadder™ 25bp	200 lanes	230.00	185.00
F20300	HyperLadder™ 25bp	500 lanes	462.00	369.00
F20314	HyperLadder™ 50bp	100 lanes	156.00	125.00
F20302	HyperLadder™ 50bp	200 lanes	220.00	176.00
F20310	HyperLadder™ 50bp	500 lanes	410.00	328.00
F20316	HyperLadder™ 100bp	100 lanes	111.00	88.40
F20294	HyperLadder™ 100bp	200 lanes	140.00	112.00
F20296	HyperLadder™ 100bp	500 lanes	299.00	239.00
F20312	HyperLadder™ 1kb	100 lanes	111.00	88.40
F20290	HyperLadder™ 1kb	200 lanes	138.00	110.00
F20292	HyperLadder™ 1kb	500 lanes	244.00	195.00

Portwest®



PW22 Challenger Goggles

Portwest® PW22 Challenger Goggles

- Anti scratch and anti fog coating
- 99% UV protection
- EN 166 1 B and EN 170 2C-1.2
- Can be worn with prescription glasses and disposable dust masks

30%
OFF

Code	List Price, €	Offer Price, €
F20266	9.91	6.93

Corning® Transwell® Cell Culture Inserts

CORNING

Transwell® cell culture inserts are convenient, easy-to-use permeable support devices for the study of both anchorage-dependent and anchorage-independent cell lines. Designed to produce a cell culture environment that closely resembles the *in vivo* state.

- 10µm thick translucent membrane
- TC treated for optimal cell attachment
- Supplied in multiple well plates
- Sterilised by gamma irradiation

Up to
**30%
OFF**



Code	Membrane	Membrane Ø, mm	Pore Size, µm	Inner Pack	Pack	List Price, €	Offer Price, €
F20026	PE	6.5	0.4	12 inserts/plate	48	484.00	338.00
F20016	PC	6.5	3	12 inserts/plate	48	511.00	371.00
F20018	PC	6.5	8	12 inserts/plate	48	523.00	338.00
F20024	PE	12	0.4	12 inserts/plate	48	484.00	338.00
F20012	PC	12	3	12 inserts/plate	48	511.00	371.00
F20022	PE	24	0.4	6 inserts/plate	24	283.00	202.00
F20014	PC	24	3	6 inserts/plate	24	308.00	222.00
F20020	PC	24	8	6 inserts/plate	24	294.00	215.00

Corning® Matrigel® Matrix-3D Cell Culture Plates

CORNING

Corning® Matrigel® matrix is a natural extracellular matrix (ECM) based hydrogel. Matrigel® Matrix-3D plates are a pre-coated, ready-to-use, high throughput option, available in 96-well and 384-well formats. Matrigel® matrix is pre-dispensed into each well to support both spheroid and organoid models in 3D cell cultures.

- Phenol red free
- Individually wrapped with lid



Up to
**45%
OFF**

Code	No. of Wells	Colour	Pack	List Price, €	Offer Price, €
F20372	384	Black/clear	5	1074.00	592.00
F20374	384	White/clear	5	1074.00	592.00
F20376	96	Black/clear	Each	225.00	143.00

Merck Cell Separation and Centrifugation Media

SIGMA-ALDRICH[®]
is now part of
MERCK

A complete line of products for the separation or extraction of leukocytes, viruses, DNA, RNA, organelles, as well as many other applications.

ACCUSPIN™ Histopaque®-1077 System

The ACCUSPIN™ system employs radiation-sterilised centrifuge tubes specially designed with a porous high-density polyethylene barrier to create 2 chambers. Whole blood can be added directly to the ACCUSPIN™ tube without the risk of mixing with the Histopaque®-1077 density gradient media contained in the lower chamber.



**Special
Price**

Code	Description	Pack	List Price, €	Offer Price, €
F20334	ACCUSPIN™ System-Histopaque®-1077; 40 x 3mL	Each	467.00	351.00
F20336	ACCUSPIN™ System-Histopaque®-1077; 12 x 15mL	Each	377.00	311.00
F20328	ACCUSPIN™ System-Histopaque®-1077; 100 x 15mL	Each	2496.00	2055.00
F20330	ACCUSPIN™ tubes sterile 12mL capacity	20	147.00	138.00
F20332	ACCUSPIN™ tubes sterile 50mL capacity	10	117.00	103.00

Histopaque®-1077

A sterile, endotoxin tested solution of polysucrose and sodium diatrizoate, adjusted to a density of 1.077g/mL. This ready-to-use medium facilitates rapid recovery of viable lymphocytes and other mononuclear cells from small volumes of whole blood.



Code	Description	Pack	List Price, €	Offer Price, €
F20338	Histopaque®-1077	100mL	71.10	53.70
F20340	Histopaque®-1077	500mL	250.00	184.00
F20342	Histopaque®-1077	6 x 100mL	229.00	194.00
F20352	Histopaque®-1077 Hybri-Max for hybridoma	100mL	78.00	60.00
F20354	Histopaque®-1077 Hybri-Max for hybridoma	500mL	352.00	323.00

Histopaque®-1119

A sterile, endotoxin tested, ready-to-use medium. This solution consists of polysucrose and sodium diatrizoate, adjusted to a density of 1.119g/mL and pH 8.8–9.0.

Histopaque®-1083

A solution containing polysucrose and sodium diatrizoate, adjusted to a density of 1.083g/mL. Facilitates the recovery of viable mononuclear cells from rats, mice, and other small mammals.

Code	Pack	List Price, €	Offer Price, €
F20348	100mL	134.00	129.00
F20350	6 x 100mL	614.00	588.00

Code	Pack	List Price, €	Offer Price, €
F20344	100mL	140.00	137.00
F20346	6 x 100mL	645.00	613.00

Cole-Parmer® Jenway® 630 501 Visible Scanning Spectrophotometer

3
YEARS

Cole-Parmer®

Suited to a wide range of applications in education, quality control, environmental and clinical analysis.

- Absorbance, %T, and concentration modes
- Analogue and RS-232 outputs let you interface with printers and PCs
- LCD display
- Multi-parameter display with wavelength and photometric readouts
- Wide range of sampling accessories
- Supplied with mains lead, pack of 100 disposable cuvettes, 10 x 10mm cell holder, interface cable, and PC application software

25%
OFF



Code	Light Source	Wavelength Range, nm	Spectral Bandwidth, nm	List Price, €	Offer Price, €
F20060	Tungsten	320 to 1000	8	3648.00	2737.00

Are we on your wavelength?



Cole-Parmer Jenway 72
Spectrophotometer



Cole-Parmer Jenway 7310
Spectrophotometer



Cole-Parmer Jenway 6300
Spectrophotometer



Cole-Parmer Jenway 76
Spectrophotometer



Cole-Parmer Undergrad SH-200D
Analog Hotplate Stirrer



Cole-Parmer V-200
Vortex Mixer



Cole-Parmer RS-200
Roller

Consolidating market leading legacy brands into a single world-class brand - Cole-Parmer®

Jenway® stuart® electrothermal® TECHNE PCRmax® → Cole-Parmer®

Cole-Parmer® Jenway® 7205 UV/Visible Scanning Spectrophotometer

2 YEARS

Cole-Parmer®

25% OFF

The 72 series spectrophotometers use diode array technology to produce exceptionally fast results. With a large colour touchscreen user interface, this range is simple to set up and navigate. Results can be saved to USB memory stick or printed using the optional printer. This spectrophotometer has measurement modes for photometrics, concentration, optical density, quantitation, spectrum scanning and kinetics.

- Not affected by ambient stray light and so can be used with the lid open
- Supplied with a 10 x 10mm cuvette holder fitted as standard
- Small footprint and very lightweight (2.8kg)
- Optional heated cell accessories available - temperature control of 37°C ±5°C, resolution of 0.5°C
- 2 year warranty (1 year on lamp)



Code	Light Source	Wavelength Range, nm	Spectral Bandwidth, nm	List Price, €	Offer Price, €
F14348	Xenon	198 - 800	5	3661.00	2746.00

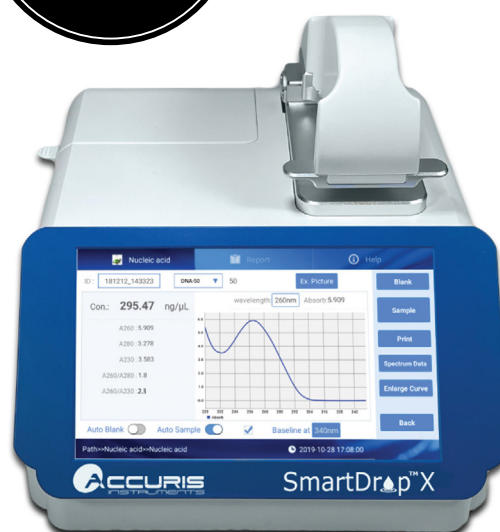
Accuris SmartDrop X Nano Spectrophotometer

Requires only 0.5 to 2.0µL of sample, utilising a small sample volume eliminates the need for dilutions, providing more accurate results. In addition to nucleic acid and protein calculations, the software has preset programs for BCA, Bradford and Lowry assays. A full spectrum analysis can be performed in about 6 seconds, up to 5 specific points on the spectrum can be selected for colorimetric readings output. The long life Xenon lamp source requires no warm up and is paired with a highly sensitive CCD detector.

- Quickly calculates and displays 260/280 and 260/230 ratios
- Auto-ranging path lengths of 0.2mm and 1.0mm
- Detect up to 4,500ng/µl of dsDNA without dilution
- Full colour, 7" touchscreen

48% OFF

Benchmark Scientific



This item may incur an additional delivery charge

Code	Light Source	Wavelength Range, nm	List Price, €	Offer Price, €
F20002	Xenon	200 - 800	18751.00	9750.00

Mettler Toledo SevenDirect pH/Ion/Conductivity Meters

1
YEAR



Developed for a wide range of applications, combine SevenDirect with the right electrode from the comprehensive InLab® portfolio for a powerful measurement system to match the challenges of your industry.

- The EasyPlace™ electrode arm makes sensor handling easy. Dedicated positions for calibration, measurement, cleaning and storage simplify daily operation
- 7" touchscreen facilitates the measurement process by avoiding unnecessary steps and focusing on the most important information
- GLP compliance by storing timestamps, sample-, sensor- and user IDs with every measurement
- EasyMix™ magnetic stirrer homogenises samples for more accurate results



Code	Description	Supplied with	List Price, €	Offer Price, €
F20078	SD20 pH meter only	SD20 meter and EasyPlace arm	1206.00	845.00
F20086	SD20 pH meter kit	SD20 meter, InLab Expert Pro pH electrode, calibration buffers and EasyPlace arm	1577.00	1104.00
F20088	SD20 pH meter bio kit	SD20 meter, InLab Routine Pro pH electrode, calibration buffers and EasyPlace arm	1680.00	1175.00
F20090	SD20 pH meter organic kit	SD20 meter, InLab Science-Pro ISM pH/temperature sensor, calibration buffers and EasyPlace arm	1827.00	1279.00
F20092	SD20 pH meter pure H ₂ O kit	SD20 meter, InLab Pure-Pro ISM pH/temperature sensor, calibration buffers and EasyPlace arm	1846.00	1292.00
F20094	SD20 pH meter solids kit	SD20 meter, InLab Solids-Pro ISM pH/temperature sensor, calibration buffers and EasyPlace arm	1768.00	1238.00
F20096	SD20 pH meter viscous kit	SD20 meter, InLab Viscous-Pro ISM pH/temperature sensor, calibration buffers and EasyPlace arm	1931.00	1352.00
F20098	SD20 pH meter low volume kit	SD20 meter, InLab Micro-Pro ISM pH/temperature sensor, calibration buffers and EasyPlace arm	1872.00	1310.00
F20100	SD20 pH stirrer kit	SD20 meter, InLab Expert Pro pH Electrode, calibration buffers, EasyMix stirrer and EasyPlace arm	1856.00	1300.00
F20084	SD23 pH/conductivity meter only	SD23 meter and EasyPlace arm	2519.00	1764.00
F20138	SD23 pH/conductivity meter kit	SD23 meter, InLab Expert Pro-ISM electrode with InLab 731-ISM probe, conductivity standard sachets and EasyPlace arm	3167.00	2217.00
F20140	SD23 pH/conductivity meter pure H ₂ O kit	SD23 meter, InLab Pure Pro-ISM electrode with InLab 741-ISM probe, conductivity standard sachets and EasyPlace arm	3481.00	2438.00
F20080	SD30 conductivity meter only	SD30 meter and EasyPlace arm	1680.00	1175.00
F20102	SD30 conductivity meter kit	SD30 meter, InLab 731-ISM probe, conductivity standard sachets and EasyPlace arm	2165.00	1516.00
F20108	SD30 conductivity meter pure H ₂ O kit	SD30 meter, InLab 741-ISM probe, conductivity standard sachets and EasyPlace arm	2396.00	1677.00
F20082	SD50 pH/Ion meter only	SD50 meter and EasyPlace arm	1476.00	1034.00
F20112	SD50 pH/Ion meter kit	SD50 meter, InLab Expert Pro pH Electrode, calibration buffers and EasyPlace arm	1850.00	1295.00
F20118	SD50 pH/Ion meter HA kit	SD50 meter, InLab Routine-Pro ISM pH/temperature sensor, calibration buffers and EasyPlace arm	1976.00	1383.00
F20124	SD50 pH/Ion meter organic kit	SD50 meter, InLab Science-Pro ISM pH/temperature sensor, calibration buffers and EasyPlace arm	2139.00	1498.00
F20126	SD50 pH/Ion meter pure H ₂ O kit	SD50 meter, InLab Pure-Pro ISM pH/temperature sensor, calibration buffers and EasyPlace arm	2152.00	1507.00
F20130	SD50 pH/Ion meter low volume kit	SD50 meter, InLab Micro-Pro ISM pH/temperature sensor, calibration buffers and EasyPlace arm	2184.00	1529.00
F20136	SD50 pH/Ion meter fluoride kit	SD50 meter, perfectION combined fluoride electrode and EasyPlace arm	2703.00	1892.00

Lovibond TB350 Portable Turbidimeters

1
YEAR



Ideal for field and environmental testing, the TB350 turbidity meter delivers the most reliable measurements for low to high range samples. Featuring patent-pending sensor technology, the optical system features dual detectors to deliver a ratio reading which mitigates common measurement stability issues.

- Reads up to 4000 NTU without the need for dilutions
- Touchscreen interface for ease of operation
- Stored data can be transferred to a computer via USB
- Easily save and recall measurement data sets

40%
OFF



Code	Model	Light Source	List Price, €	Offer Price, €
F20040	TB350 IR	IR LED	2964.00	1778.00
F20042	TB350 WL	White LED	2964.00	1778.00

Accessories

Code	Description	Pack	List Price, €	Offer Price, €
F20054	T-Cal standard <0.1 NTU	Each	176.00	131.00
F20052	T-Cal standard 10 NTU	Each	176.00	131.00
F20050	T-Cal standard 100 NTU	Each	176.00	131.00
F20048	T-CAL standard 1000 NTU	Each	176.00	131.00
F20046	T-Cal standard 4000 NTU	Each	176.00	131.00
F20056	Set turbidity standards T-CAL; 5, 20, 800, 4000 NTU; for TB350 IR	4	407.00	306.00
F20058	Set turbidity standards T-CAL; 5, 20, 800, 2000, 4000 NTU; for TB350 WL	5	439.00	330.00
F20044	Sample cuvettes with black lid, height 55mm x Ø 24mm	12	130.00	78.00

Bollé



Sphere Face Shield with Browguard

Bollé Sphere Face Shield with Browguard

- 99.9% UVA/UVB protection
- Protection against electrical short circuit arcs
- Resistant to high energy impact
- CE marked and EN 166

30%
OFF

Code	List Price, €	Offer Price, €
F20268	38.22	26.75

KNF Laboport® Type N 820G Vacuum Pump

2
YEARS



Featuring a control knob for manual adjustments of the flow rate. Due to the integrated rotational speed control, the pumps are quiet, very energy efficient, and can be optimally adjusted. Ideal for working with extremely aggressive/corrosive gases and vapours. Potential applications include rotary evaporation, distillation, gel drying, degassing, use by vacuum ovens and vacuum concentrators.

- Adjustable flow rate of up to 2.04m³/h
- 3-colour status display: in operation/stand-by/error
- ATEX-compliant in accordance with II 2/-G IIB+H2 T3 internal atmosphere only
- 100% oil-free transfer to ensure uncontaminated transfer, evacuation and compression

25%
OFF



Code	Delivery, L/min	Ultimate Vacuum, mbar	Dims, w x d x h, mm	List Price, €	Offer Price, €
F14996	20	6	163 x 259 x 220	2207.00	1656.00

Benchmark IsoPure Mini Automated Purification System



The IsoPure Mini is a compact, automated purification system that improves efficiency and reproducibility using the magnetic bead-based method. Mixing, magnetic bead transfer, washing, and elution steps are performed automatically, saving valuable hands-on time. The purification process can be completed within 10 to 60 minutes depending on the type of reagent kit used and the complexity of the program.

- Fast, reliable and reproducible results
- Compatible with all popular magnetic bead kits
- Process up to 16 samples
- Android app and PC software for programming

35%
OFF



This item may incur an additional delivery charge

Code	Sample Volume, µL	List Price, €	Offer Price, €
F18010	50 to 1000	14174.00	9213.00

SLS Lab Pro PURA-Q+ Type 1 and 2 Water Purification

1
YEAR

SLS LAB
PRO

Combines ultrapure and DI water in one unit saving you money and space. Type 2 water is ideal for buffer, reagent & media preparation, sample dilution and general chemistry. Type 1, dispensed direct from the unit or using an optional remote dispenser, is perfect for the most sensitive applications such as cell & tissue culture, molecular biology, electrophoresis, chromatography & spectroscopy.

- Intuitive, icon-based, interactive user interface with touchscreen
- Up to 2L/min ultrapure water with volumetric dispense
- Variable make up rate, up to 25L/hr
- Mount on-bench, under-bench or on the wall
- Continuous TOC monitoring
- Low endotoxin, RNase, DNase and protease options available

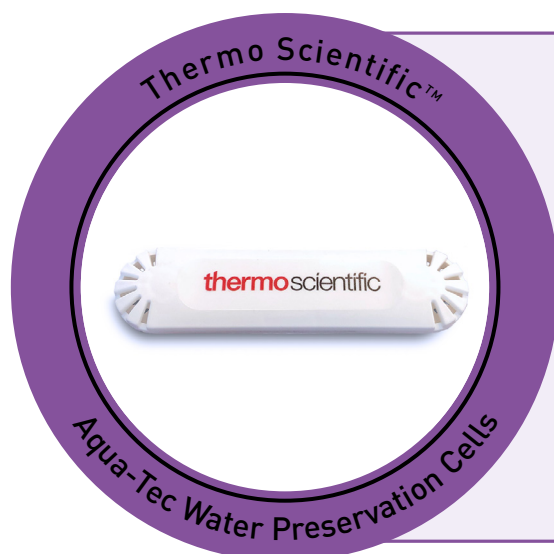


50%
OFF

Code	Model	Dispenser	List Price, €	Offer Price, €
F17184	+20 UF	Integrated	16510.00	8255.00
F17186	+20 UF R	Remote	17160.00	8580.00

Reservoirs

Code	Capacity, L	Description	Dims, w x d x h, mm	List Price, €	Offer Price, €
F151364	30	Storage reservoir	405 x 230 x 495	1478.00	741.00
F151365	60	Storage reservoir	480 x 330 x 495	1797.00	878.00
F151366	100	Storage reservoir	480 x 360 x 810	2514.00	1229.00
F17188	100	Storage reservoir with pump	480 x 360 x 810	3977.00	2126.00



Thermo Scientific™ Aqua-Tec Water Preservation Cells

Proven to inhibit the growth of bacteria, moulds, and fungi for up to 6 months. Designed and tested specifically for laboratory use in CO₂ incubators and water baths. Easy to use in equipment from any manufacturer.

Code	Pack	List Price, €	Offer Price, €
WAT1200	4	620.00	434.00

30%
OFF

Grant JB Academy Unstirred Water Baths

3
YEARS

grant

A basic, simple to use, high quality water bath range, consisting of three great value models. A polycarbonate, perforated base tray is included as standard, which promotes heat convection, optimal temperature uniformity, and allows any container to be placed directly in the bath.

- Temperature range: ambient +5 to 95°C ($\pm 0.5^\circ\text{C}$)
- Unique Set and Forget® technology with fast heat up
- Practical front panel lock which disables front panel controls preventing unintentional temperature changes



15% OFF
+ FREE
Lid

FREE Polycarbonate Lid!

Code	Model	Capacity, L	Ext Dims, w x d x h, mm	Int Dims, w x l, mm	List Price, €	Offer Price, €
F19220	JBA5	5	335 x 215 x 205	281 x 131	602.00	512.00
F19222	JBA12	12	360 x 390 x 227	306 x 281	693.00	589.00
F19224	JBA18	18	335 x 590 x 227	281 x 485	803.00	683.00

Grant Aqua Pro Shaking Water Baths

3
YEARS

grant

The Aqua Pro shaking water bath range offers exceptional temperature performance and usability. With three bath models to choose from, there is a shaking water bath to meet basic and demanding applications in research, industry and life sciences. Includes clear polycarbonate lid and universal tray included as standard, other shaking trays sold separately.

- Temperature range: ambient +5 to 99°C
- Stability: $\pm 0.1^\circ\text{C}$
- Digital control/LED display
- Linear shaking speed 20 - 200 RPM
- Adjustable shaking speed and stroke length (OLS26)



**25%
OFF**

Code	Model	Capacity, L	Shaking Mode	Ext Dims, w x d x h, mm	Int. Dims, w x d, mm	List Price, €	Offer Price, €
F151240	OLS26	26	Orbital + Linear	325 x 565 x 335	380 x 235	4094.00	3071.00
F151241	LSB12	12	Linear	275 x 360 x 335	240 x 235	2920.00	2191.00
F151242	LSB18	18	Linear	275 x 595 x 335	420 x 235	3322.00	2491.00

Grant Ecocool Energy Efficient Refrigerated Heating Circulating Baths

Innovative, eco-friendly, refrigerated heating circulating baths offering significant running cost savings whilst delivering powerful cooling. Consisting of two models, all products in the ecocool range are supplied assembled as ready to use kits, complete with accessory hosing, clips and connectors as standard.

- Active cooling through the whole temperature range
- True energy saving of up to 80% against standard compressor units
- Thermostat and chiller work in harmony, neither will operate alone, eliminating any danger of overheating or freezing
- Single front switch for user convenience

25% OFF



grant



This item may incur an additional delivery charge

Code	Model	Capacity, L	Max Flow Rate, L/min	Max Pump Pressure, mbar	Display	Temp Range, °C	List Price, €	Offer Price, €
F16196	ecocool 100R	5	17	250	4 digit LED	-20 to +100	4632.00	3474.00
F16200	ecocool 150R	6	14 – 22	530	Full colour QVGA TFT	-25 to +150	5350.00	4012.00

IKA RV 3 V Rotary Evaporators

2 YEARS

IKA®

Specially designed glass guides enable the condenser to make extremely efficient use of the 1500cm² cooling surface. Digital displays for speed and heating bath temperature allow optimum control of all distillation processes.

- 4L heating bath for up to 99°C
- Locking mechanism: red indicator shows unlocked position of the vapor tube
- Manual lift for precise positioning of the glassware
- Adjustable immersion angle
- Speed range: 20 to 300RPM
- Compatible with the entire range of IKA RV 10 glassware

15% OFF



RV 3 pro V complete package includes: the rotary evaporator, HB eco/digital heating bath 4L, a vertical glass condenser set with 1L receiver and evaporator flask, the VACSTAR digital vacuum pump with VC 10 lite vacuum controller, and the RC 2 lite recirculating chiller.

Code	Description	List Price, €	Offer Price, €
F20028	RV 3 pro V rotary evaporator complete package	9272.00	7881.00
F20030	RV 3 V rotary evaporator with heating bath and glassware	3163.00	2688.00

SCAT HPLC Mobile Phase Safety Cap Starter Kit

Ensure the safety of your HPLC system - for the extraction of solvents.

- GL 45 thread
- Suitable for all current HPLC systems
- Unused connectors can be closed by the blind screws delivered with the set

HPLC Starter Kit 3

Kit includes:

- 4 x SafetyCap III V2.0 GL 45 blue/white
- 4 x Air valve for SafetyCaps V2.0 UNF 1/4" 28G red
- 12 x Fitting 1.6mm UNF 1/4" 28G green
- 12 x Fitting 2.3mm UNF 1/4" 28G violet
- 12 x Fitting 3.2mm UNF 1/4" 28G blue
- 8 x Blind plug UNF 1/4" 28G translucent
- 8 x Insertion label / title block white



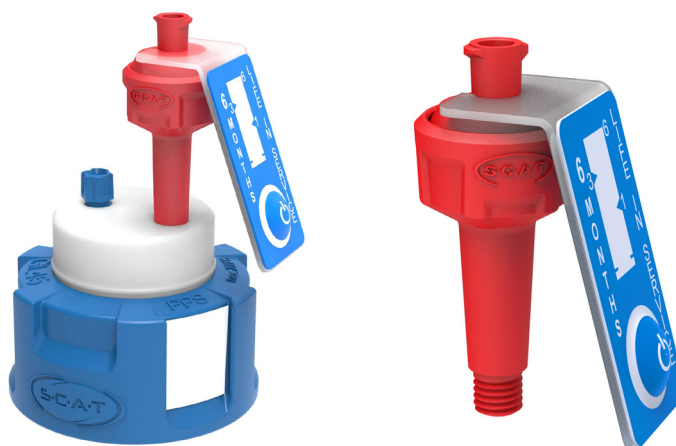
**Offer Price
€306!**

Code	Description	List Price, €	Offer Price, €
F20356	HPLC Starter Kit 3 V2.0	338.00	306.00

Safety Caps and Air Valves

Alternatively buy your components separately.

**See more options on
our website**



Code	Description	Pack	List Price, €	Offer Price, €
F20358	SafetyCap I GL45 (1 x PFA fitting)	Each	92.30	84.50
F20360	SafetyCap II GL45 (2 x PFA fittings)	Each	104.00	91.00
F20362	SafetyCap III GL45 (3 x PFA fittings)	Each	109.00	97.50
F20364	SafetyCap I GL/S40 (1 x PFA fitting)	Each	98.80	84.50
F20366	SafetyCap I GL/S80 (1 x PFA fitting)	Each	174.00	156.00
F20368	Air valve UNF 1/4" 28G PU	Each	29.90	26.00
F20370	Air valve UNF 1/4" 28G PU	10	265.00	215.00

Getinge Lancer ULTIMA 1300LX Freestanding Labware Washer/Dryer Package



GETINGE ✱

The GETINGE Lancer ULTIMA series mid range freestanding washers offer a range of labware loading options using baskets, injector racks or combination racks for the best high capacity processing of multiple labware types in the industry.

- Active and HEPA filtered drying
- Maximum temperature 95°C
- Triple phase power supply
- Exterior dimensions, w x d x h:
609 x 752 x 1643mm
- Supplied with: PST basic flat
mesh basket, 36 IXLC injector rack, and chemical starter pack

**15%
OFF**



**Includes delivery, installation and basic commissioning,
and first year service contract***

***Installation/commissioning and service contract
excludes Northern Ireland**



Code

List Price, €

Offer Price, €

F20062

31876.00

27095.00

Thermo Scientific™



Sterilin™ Autoclave Bags

Thermo Scientific™ Sterilin™ Autoclave Bags

HDPE bags suitable for sterilisation at 121°C,
polypropylene bags suitable for inactivation of resistant
biological waste at 135°C. **Supplied in packs of 200**

**50%
OFF**

Code	Material	Dims, w x l, mm	List Price, €	Offer Price, €
AUT1700	HDPE	305 x 660	108.00	54.00
AUT1704	HDPE	406 x 610	183.00	91.70
AUT1708	HDPE	610 x 810	329.00	165.00
AUT1710	Polypropylene	307 x 660	215.00	107.00
AUT1714	Polypropylene	406 x 610	235.00	118.00
AUT1718	Polypropylene	610 x 810	393.00	196.00

SLS Flowgen Incu-Shaker™ Refrigerated Shaking Incubator

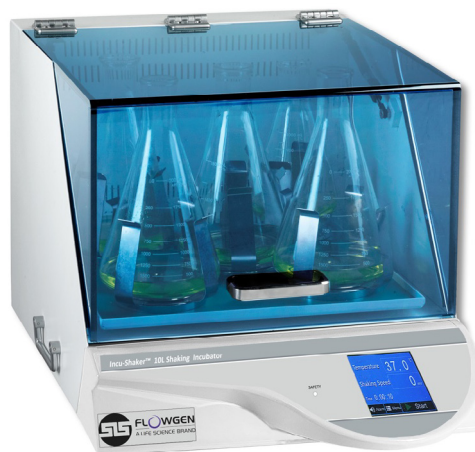
2
YEARS



A heavy-duty performer, designed for heavy workloads and continuous use. Outstanding temperature accuracy and uniformity are supported by heat distribution technology that ensures that temperatures are precisely maintained throughout the chamber. Noise and vibration are minimised by an advanced, computer designed motor isolation system. A standard, rubber mat platform is included and is ideal for use with tissue culture flasks, Petri dishes, staining trays and other flat vessels.

- Large platform 18 x 18 inch, for up to 5 x 2L
- Horizontally circular 19mm orbit for aeration & mixing
- Timer: 1 min to 48 hrs or continuous

35%
OFF



Code	Speed Range, RPM	Temp Range, °C	Dims, w x d x h, mm	List Price, €	Offer Price, €
F16530	30 to 300	-15 to 60	510 x 790 x 560	14472.00	9425.00

SLS Flowgen Incu-Shaker™ Incubated Shaker

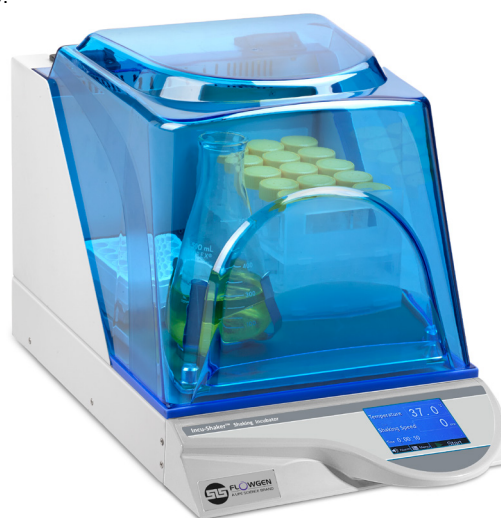
2
YEARS



A compact shaking incubator with a remarkably small footprint. Accepts several platforms and a variety of flasks, tubes and other common vessels. The standard platform (included) features a non-slip, rubber coated surface, ideal for tissue culture flasks, Petri dishes and staining trays. The convenient MAGIC Clamp™ platform is also available for use with Erlenmeyer flasks and test tube racks.

- Touch screen control over time, speed and temperature
- Horizontally circular 19mm orbit for aeration & mixing
- Instantly exchange flask clamps with MAGIC Clamp™ accessories
- Program STEP feature for linking consecutive programs
- MAGIC Clamp™ accessories sold separately - see website for details

52%
OFF



Code	Temp Range, °C	Temp Uniformity/ Accuracy, ±%	Speed Range, RPM	Orbit, mm	Dims, w x d x h, mm	List Price, €	Offer Price, €
F151359	Ambient +5 to 70	0.25/0.1	30 to 300	19	280 x 480 x 330	5746.00	2730.00

SLS Lab Pro Laboratory Incubators

2
YEARS



Chamber manufactured from bright polish stainless steel lagged with high efficiency thermal insulation. Digital temperature control up to 80°C with program feature run back timer. Over temperature auto set and Class 1 over temperature protection. Single insulated door, lockable with 2 point door engagement for an even seal.

- Door chime when left open
- Inner clear polycarbonate door
- Anti-bacterial paint finish
- Temperature range ambient +5°C to 80°C
- PID digital, LED display showing actual or set temperature, resolution 0.1°C
- Gravity natural convection
- Temperature sensor fail alarm with error reporting
- Shelf runners adjustable in 20mm steps vertically

Up to
**25%
OFF**



Code	Capacity, L	Supplied with	Shelf Positions	List Price, €	Offer Price, €
F16476	60	2 x stainless steel shelves	5	2708.00	2113.00
F16478	110	2 x stainless steel shelves	8	3455.00	2691.00
F16480	250	3 x stainless steel shelves	10	4567.00	3426.00

Astell[®] Bio sink & autoclave combo

Combining the Astell AMA440 and the AstellBio Sink, the Combo forms a perfect sterilisation station for laboratories looking for safe, simple, chemical-free sterilisation

The Astell AMA440
Astell Scientific's versatile, compact top-loading autoclave for sterilizing glassware, instruments, media, and discard.



The AstellBio Sink
Liquids washed down the sink are automatically autoclave sterilized before being automatically dispatched to the drain

Liebherr Mediline Spark Free Refrigerator and Freezer

2 YEARS

LIEBHERR

Liebherr refrigerators and freezers with a Comfort electronic controller and spark free interior can be used for storing explosive and highly flammable substances.

Up to
25% OFF

- Comfort electronic controller enables temperatures to be set accurately
- ATEX has been updated. 2014 / 34 / EU (ATEX) directive, rated as II 3G Ex NA II T6
- Visual and audible alarm systems
- Integrated data memory
- Volt free alarm contact
- Static cooling
- Manual defrost
- Self closing doors with lock



This item may incur an additional delivery charge

Code	Description	Temp Range, °C	Capacity, L	No. of Shelves	Dims, w x d x h, mm	List Price, €	Offer Price, €
F20032	LGUex1500 underbench freezer	-9 to -26	139	3	601 x 618 x 820	1897.00	1574.00
F20034	LKUexv1610 underbench refrigerator	+3 to +16	141	3	597 x 615 x 820	2058.00	1543.00

Liebherr Premium Underbench Freezer

2 YEARS

LIEBHERR

The Liebherr premium underbench freezer with static cooling is an ultra-efficient unit that easily fits on or under a counter. Designed for better freezing performance and stable temperatures.

25% OFF

- Large surface evaporator for better cooling performance and faster freezing
- Highly efficient fan for consistent internal temperatures
- Digital temperature display with touch control buttons
- Audible alarms for high temperatures and open door
- Coated or stainless steel body with adjustable feet
- Thermoformed polystyrene liner made from a single sheet for easy cleaning
- Reversible, self closing doors have interchangeable hinges for right or left open
- Solid steel door lock for securing valuable samples and lab products



This item may incur an additional delivery charge

Code	Model	Temp Range, °C	Capacity, L	No. of Shelves	Dims, w x d x h, mm	List Price, €	Offer Price, €
F20036	GGU1500	-9 to -26	143	3	600 x 615 x 830	1386.00	1040.00

Haier Biomedical HLR Free Standing Laboratory Refrigerator



Haier Biomedical
Intelligent Protection of Life Science

Upright laboratory refrigerator with precise temperature control and adjustable set point. Microprocessor controller with LED display and multiple alarms. Access port, high-strength glass shelves, lock and USB interface as standard. Environmentally friendly hydrocarbon refrigeration technology and energy saving fan motor to reduce energy consumption.



**34%
OFF**

- Internal temperature variation is within 3°C to maintain temperature uniformity
- Multiple alarms include high and low temperature alarms, door open alarm, etc.
- Can be remotely monitored

This item may incur an additional delivery charge

Code	Model	Temp Range, °C	Capacity, L	Dims, w x d x h, mm	List Price, €	Offer Price, €
F19536	HLR-310F	605 x 600 x 1870	310	605 x 600 x 1870	2514.00	1664.00

Haier Biomedical DW-25 Laboratory Freezers



Haier Biomedical
Intelligent Protection of Life Science

Biomedical freezers with manual defrost and internal drawers. Reliable, energy-efficient and environmentally friendly HC refrigeration. Featuring microprocessor controller, LED display with battery backup, alarm functions and lock. Efficient hydrocarbon (HC) compressor and optimised refrigeration system, with low power consumption.



- Secure and safe, suitable for multiple users with mechanical lock plus lock catch
- Microprocessor electronic temperature controller
- LCD digital temperature display with display precision is 0.1°C
- Multiple alarms including high and low temperature, sensor error, etc.

This item may incur an additional delivery charge



Up to
**28%
OFF**

Code	Model	Temp Range, °C	Capacity, L	Dims, w x d x h, mm	List Price, €	Offer Price, €
F19532	DW-25L262	-10 to -25	262	700 x 705 x 1665	2843.00	2048.00
F19534	DW-25L92	-10 to -25	92	640 x 610 x 810	1427.00	1127.00

Haier Biomedical Sparkfree Refrigerators and Freezers



Haier Biomedical
Intelligent Protection of Life Science

Explosion proof with an intelligent temperature control system which keeps internal temperature variation within 3°C for excellent temperature uniformity.

- 360° explosion proof interior with ATEX II C-T6 EU certification
- Incorporates an anti static liner, gasket and explosion proof fan motor
- Equipped with overcurrent and overvoltage protection systems to provide an ATEX certified laboratory refrigerator
- Microprocessor controller with LED display
- Audible and visual alarms including high/low alarm, sensor failure and power failure
- Door comes with built in lock with the facility for a padlock
- Low energy consumption – the HC refrigerant cooling system has twice the cooling efficiency and saves half the energy when compared to traditional refrigeration systems
- Ultra quiet fan motor with noise cancelling technology makes this unit's noise output less than 40dB, ensuring for a quiet and comfortable lab environment
- Unit comes with castors and levelling feet to ensure unit is easy to move and secure in place



This item may incur an additional delivery charge



Code	Model	Temp Range, °C	Capacity, L	Description	Dims, w x d x h, mm	List Price, €	Offer Price, €
F19428	HLR-118SF	+3 to +16	118	Underbench	597 x 635 x 835	2179.00	1416.00
F19430	HLR-310SF	+3 to +16	310	Upright	605 x 598 x 1840	3276.00	2194.00
F19432	DW-25L92SF	-10 to -25	92	Underbench	640 x 610 x 810	1925.00	1290.00
F19434	DW-30L278SF	-10 to -30	278	Upright	745 x 675 x 1810	5221.00	3289.00

Haier Biomedical -150°C Cryo Chest Freezer



Haier Biomedical
Intelligent Protection of Life Science

With a storage environment about 20°C colder than the water recrystallisation temperature, it is suitable for storage of a varieties of biological samples and testing materials.

- 10" LCD touchscreen display with temperature accuracy of 0.1°C
- Environmentally friendly HC refrigerant
- Energy saving dual-compressors 4-stage cascade refrigeration system
- Wide cabinet opening design, outer door multi-layer sealing, standard with two inner doors, to prevent the loss of cold
- Audible and visual alarms: user programmable high and low temperature alarm set points, power failure, sensor error, door ajar, etc.



**45%
OFF**



This item may incur an additional delivery charge

Code	Model	Temp Range, °C	Capacity, L	Dims, w x d x h, mm	List Price, €	Offer Price, €
F19426	DW-150W209	-130 to -150	200	1650 x 865 x 1008	46521.00	25587.00

SLS Lab Pro Statebourne Biorack Storage Refrigerators



The Biorack series of refrigerators provide highly efficient storage of bulk quantities of cryovials. Racking systems housed within these ultra low loss cryogenic refrigerators enable users to store large quantities of biomedical material over long periods of time, safe in the knowledge that storage temperatures even in the vapour phase, will be below -190°C.

- Advanced super insulation and ultra high vacuum techniques
- Ultra-low evaporative losses
- Compatible with all major cryobox brands
- Heavy duty lockable enclosure offers excellent security
- Supplied complete with racks and polycarbonate cryoboxes

**37%
OFF**



This item may incur an additional delivery charge

Code	Model	LN ₂ Capacity, L	Evaporation Rate, L/day	Vial Capacity, 2mL	Dims, h x Ø, mm	Supplied with	List Price, €	Offer Price, €
F19308	Biorack 750	35	0.3	750	710 x 480	5 racks, 30 5x5 cryoboxes	4081.00	2581.00
F19312	Biorack 3000	85	0.63	3000	738 x 646	6 racks, 30 10x10 cryoboxes	6205.00	3881.00
F19314	Biorack 4800	131	0.63	4800	913 x 646	6 racks, 48 10x10 cryoboxes	7764.00	4882.00
F19316	Biorack 6000	160	0.63	6000	1027 x 646	6 racks, 60 10x10 cryoboxes	8336.00	5291.00

SCIENTIFIC LABORATORY SUPPLIES PRESENTS

FOCUS

EXCLUSIVE OFFERS & EXCITING NEW PRODUCTS

Gilson Pipetman® L Pipette Kits

A lightweight pipette with a handle that fits naturally in the hand. PIPETMAN® L features a patented volume locking system for safe, secure pipetting



SCIENTIFIC
LABORATORY
SUPPLIES

t. England & Wales: +44 (0)115 982 1111
Scotland: +44 (0)123 643 1857
Northern Ireland: +44 (0)28 9262 1100
Republic of Ireland: +353 (0)1 4069 464
International: +44 (0)115 977 5060
East Africa: +254 (0)728 156294

www.scientificlabs.ie

AUTUMN EDITION

see page 11...

45%
OFF

2023