

BACK 2 BASICS

— 2023

EXCLUSIVE offers on essentials for your laboratory

**UP TO
20% OFF**

Eppendorf
5425 Centrifuges



**UP TO
40% OFF**

IKA
Laboratory
Mixers & Shakers



36% OFF

SLS Lab Pro
Hydron Benchtop
pH Meter



**UP TO
25% OFF**

JULABO
FT Immersion
Coolers



**UP TO
40% OFF**

SLS Lab Pro
Water Purification
Systems



**UP TO
24% OFF**

OHAUS
Scout® SKX Portable
Precision Balances



Valid 1st Jun - 30th Sept 2023



**SCIENTIFIC
LABORATORY
SUPPLIES**

BACK 2 BASICS 2023

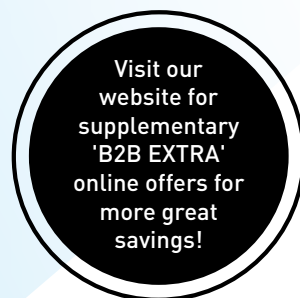
WELCOME

to our 2023 issue of **BACK 2 BASICS**, where we work closely with a number of our key suppliers to bring you the best deals in the market for selected laboratory products. In this issue, we have fantastic offers on selected lines from our own **SLS Lab Pro**, **SLS Select** and **SLS Lab Basics** brands alongside those from world renowned manufacturers such as **Grant**, **Eppendorf**, **Corning**, **Gilson**, **Mettler Toledo**, **OHAUS**, **Spex Jenway** and **Benchmark**.

To benefit from the prices offered in this brochure, please use the appropriate promotional code when placing your order.

These offers are **EXCLUSIVE** to SLS and valid until **30th Sept 2023**

Kind regards,
Scientific Laboratory Supplies (SLS)



Buy One, Get One TREE

Look out for products with the 'Buy One, Get One TREE' icon in our promotions. With every purchase of these products, we will plant a tree on your behalf in partnership with



KEY to product symbols:



Eppendorf 5425 Centrifuges

2 YEARS

eppendorf

24 place microcentrifuges engineered to be extremely quiet. Short runs up to 12 minutes are whisper quiet at an average noise level of 45dB(A) and maximum speed of up to 21300xg. This is sufficient for centrifugation steps of most routinely used DNA/RNA purification kits. During longer runs the cooling fan works at full capacity to dissipate the heat for the remainder of the run.

- Aerosol tight Eppendorf QuickLock® lids for simple and safe handling
- Outstanding software features (e.g. adjustable acceleration and braking ramps, 3 program buttons, short function without continuous pressing of the key)
- OptiBowl® design for quiet operation, even without a rotor lid
- Soft touch one finger lid closure for ergonomic operation
- Timer: 10s to 9:59hr, with continuous run function
- Dims, w x d x h: 240 x 390 x 240mm
- Speed range: 100 – 15060RPM
- Max RCF: 21300xg (with fixed angle rotor); 3217xg (with swing bucket rotor)



Code	Description	Supplied with	Capacity	List Price, €	Offer Price, €
E5405000360	5425 centrifuge with keypad	—	—	2514.00	2010.00
E5405000166	5425 centrifuge with keypad	FA-24x2 rotor	24 x 1.5/2.0mL tubes	2904.00	2499.00
E5405000760	5425 centrifuge with rotary knobs	—	—	2514.00	2010.00
E5405000565	5425 centrifuge with rotary knobs	FA-24x2 rotor	24 x 1.5/2.0mL tubes	2904.00	2499.00



Protect Your Samples – And the Planet

The future is green:

Centrifuge 5427 R is the first centrifuge in our portfolio with a hydrocarbon-based coolant (R290), which has a very low Global Warming Potential (GWP) of nearly zero, and therefore contributes to the reduction of global warming.

Find out more:

www.scientificlabs.ie/centrifuge-5427R

It also offers the best tube capacity footprint-ratio within the Eppendorf microcentrifuge range and is therefore the perfect fit for labs in need of high-throughput solutions for 1.5 – 2 mL tubes or with a multiplicity of different molecular biology applications.



Eppendorf 5430/5430 R Centrifuges

2
YEARS

eppendorf

Combine the best features of a microcentrifuge (small footprint) and multipurpose centrifuge (versatility) in one instrument. These centrifuges spin rotors for Eppendorf tubes and PCR strips as you would expect from any microcentrifuge. But that's not all: in a compact size, the 5430 and 5430 R also accommodate rotors for microplates and 15/50mL conical tubes. The refrigerated version (5430 R) features patented compressor technology to reduce vibrations and protect your samples, whilst continuous cooling maintains a constant temperature after the run has been completed, and ECO shutoff engages after 8 hours of non-use to reduce energy consumption (37% overnight) and extend compressor life.

- Soft touch one finger lid closure for ergonomic operation
- Menu driven, multi lingual operation menu with large backlit display
- 5 program keys for easy access to routine programs
- Saves up to 50 user defined programs
- Automatic rotor recognition and imbalance detection
- Eppendorf QuickLock® for quickly opening and closing the rotor lid
- FastTemp pro® function for programmable pre-cooling according to day and time (5430 R only)
- Timer: 30s to 99:59h, with continuous run function

UP TO
**20%
OFF**



Code	Description	Supplied with	Capacity	List Price, €	Offer Price, €
E5427000260	5430 centrifuge with keypad	FA-45-30-11 rotor with aerosol tight lid	30 x 1.5/2.0mL	4475.00	3580.00
E5427000060	5430 centrifuge with keypad	—	—	3687.00	3174.00
E5427000465	5430 centrifuge with rotary knobs	FA-45-30-11 rotor with aerosol tight lid	30 x 1.5/2.0mL	4475.00	3580.00
E5427000660	5430 centrifuge with rotary knobs	—	—	3687.00	3174.00
E5428000060	5430 R refrigerated centrifuge with keypad	FA-45-30-11 rotor with aerosol tight lid	30 x 1.5/2.0mL	8373.00	6698.00
E5428000255	5430 R refrigerated centrifuge with keypad	—	—	7498.00	6455.00
E5428000460	5430 R refrigerated centrifuge with rotary knobs	FA-45-30-11 rotor with aerosol tight lid	30 x 1.5/2.0mL	7935.00	6698.00
E5428000655	5430 R refrigerated centrifuge with rotary knobs	—	—	7498.00	6455.00

Eppendorf Xplorer® and Xplorer® plus Electronic Pipettes

Designed to aspirate and dispense liquid volumes from 0.5µL to 10mL. Features an intuitive operating system and ergonomic design, supported by Eppendorf PhysioCare Concept®. The Xplorer® plus offers additional functionality including adjustable fixed-volumes and a history function. Password protection also provides security for programmes and settings whilst the integrated information display allows you to see if your test series is correct, check when the next service is due.

- Function control soft keys with multi-function rocker and selection dial
- Innovative ejector
- Separate power socket with practical charging contacts
- Colour display



Eppendorf Xplorer® Pipettes

Code	Channel	Volume Range, µL	Colour Code	Tips, µL	List Price, €	Offer Price, €
E4861000015	Single	0.5 - 10	Medium grey	20	767.00	579.00
E4861000023	Single	5 - 100	Yellow	200	767.00	579.00
E4861000031	Single	15 - 300	Orange	300	767.00	579.00
E4861000040	Single	50 - 1000	Blue	1000	767.00	579.00
E4861000058	Single	250 - 5000	Violet	5000	767.00	579.00
E4861000066	Single	500 - 10000	Turquoise	10000	767.00	579.00
E4861000104	8	0.5 - 10	Medium grey	20	1132.30	854.00
E4861000120	8	5 - 100	Yellow	200	1132.30	854.00
E4861000147	8	15 - 300	Orange	300	1132.30	854.00
E4861000163	8	50 - 1200	Green	1200	1132.30	854.00
E4861000112	12	0.5 - 10	Medium grey	20	1326.00	1001.00
E4861000139	12	5 - 100	Yellow	200	1326.00	1001.00
E4861000155	12	15 - 300	Orange	300	1326.00	1001.00
E4861000171	12	50 - 1200	Green	1200	1326.00	1001.00
E4861000017	Single	1 - 20	Light grey	20	767.00	579.00
E4861000027	Single	10 - 200	Yellow	200	767.00	579.00
E4861000044	Single	125 - 2500	Red	2500	767.00	579.00

1
YEAR



eppendorf

Eppendorf Xplorer® plus Pipettes

Code	Channel	Volume Range, µL	Colour Code	Tips, µL	List Price, €	Offer Price, €
E4861000708	Single	0.5 - 10	Medium grey	20	868.00	700.00
E4861000716	Single	5 - 100	Yellow	200	868.00	700.00
E4861000724	Single	15 - 300	Orange	300	928.00	700.00
E4861000732	Single	50 - 1000	Blue	1000	868.00	700.00
E4861000740	Single	250 - 5000	Purple	5000	928.00	700.00
E4861000759	Single	500 - 10000	Turquoise	10000	909.00	700.00
E4861000767	8	0.5 - 10	Medium grey	20	1278.00	1029.00
E4861000783	8	5 - 100	Yellow	200	1278.00	1029.00
E4861000805	8	15 - 300	Orange	300	1365.00	1029.00
E4861000821	8	50 - 1200	Green	1200	1365.00	1029.00
E4861000775	12	0.5 - 10	Medium grey	20	1570.00	1209.00
E4861000791	12	5 - 100	Yellow	200	1570.00	1209.00
E4861000813	12	15 - 300	Orange	300	1570.00	1209.00
E4861000830	12	50 - 1200	Green	1200	1570.00	1209.00
E4861000710	Single	1 - 20	Light grey	20	928.00	700.00
E4861000720	Single	10 - 200	Yellow	200	928.00	700.00
E4861000736	Single	125 - 2500	Red	2500	928.00	700.00
E4861000778	16	1 - 20	Pearl white	20	1754.00	1350.00
E4861000779	24	1 - 20	Pearl white	20	1938.00	1492.00
E4861000792	16	5 - 100	Yellow	100	1754.00	1350.00
E4861000793	24	5 - 100	Yellow	100	1938.00	1492.00

Eppendorf Research® plus Move It® Pipettors with Adjustable Tip Spacing

3 YEARS

eppendorf

Do you frequently transfer samples between different vessel formats, such as between tubes and plates, and strive for more efficient and safe solutions? The new adjustable tip spacing pipette Move It® accelerates and simplifies synchronous pipetting of a series of samples. A unique design without tubing connections results in increased precision and durability as well as user and sample safety.

- Efficient sample transfers from one vessel type to another.
- Pre-defined settings allow for quick switches back and forth between different formats
- Tip spacing freely selectable between 9 and 33mm
- Time saving thanks to rotatable pipette head - 360°
- Tubeless system for reliability and reproducible results - no cable tangle and tubing-porosity, for consistently reliable robustness and precision

UP TO
21% OFF



Code	Channel	Volume Range, µL	Tip Spacing Range, mm	List Price, €	Offer Price, €
E3125000150	4	30 - 300	9 - 33	1560.00	1153.00
E3125000184	4	120 - 1200	9 - 33	1560.00	1153.00
E3125000168	6	30 - 300	9 - 20	1624.00	1200.00
E3125000192	6	120 - 1200	9 - 20	1624.00	1200.00
E3125000176	8	30 - 300	9 - 14	1690.00	1249.00
E3125000206	8	120 - 1200	9 - 14	1690.00	1249.00

SLS Select Centrifuge Tubes



UP TO
84% OFF

- Certified RNase and DNase free
- Sterile
- Manufactured from high clarity medical grade polypropylene
- Leak proof flat polypropylene cap
- Printed graduations and a large writing area for sample identifications
- Racked tubes are packaged in recyclable card racks
- Lot traceability
- RCF: 9000 (15 and 50mL tubes)



Supplied in packs of 500

Code	Description	Volume, mL	List Price, €	Offer Price, €
B2B06192	Loose	15	318.50	54.60
B2B06194	Racked	15	356.20	58.50
B2B06196	Loose	50	352.30	61.10
B2B06198	Racked	50	367.90	68.90
B2B06200	Skirted, bagged	50	388.70	68.90



Meker Portable Burners

UP TO
70% OFF

Code	Description	List Price, €	Offer Price, €
B2B06102	Burner	118.30	65.00
B2B06104	Cartridge, 240g	24.28	7.28

BRAND Seal-R-film™ Laboratory Sealing Film



Seal-R-film™ sealing film seals beakers, flasks, and other vessels. The sealing film can be stretched to three times its original length, meaning that Seal-R-film™ always fits, even with irregular shapes. For traceability, each roll has a lot identification.

- Thickness: 0.14 ± 0.02mm
- Continuous service temperature: -20°C to 46°C
- Tear strength (25°C): 1.5 MPa



Code	Dims, mm x m	List Price, €	Offer Price, €
FIL3806	100 x 38	62.27	34.26
FIL3800	50 x 75	66.30	36.47
FIL3802	100 x 75	123.50	67.93
FIL3804	500 x 15	148.20	81.51

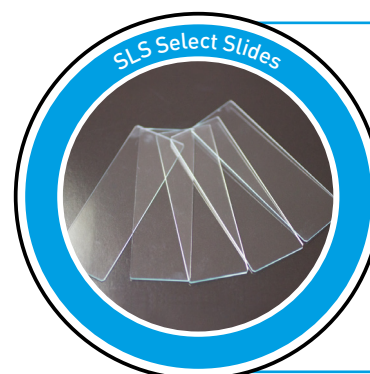
Swann-Morton Qlicksmart BladeFLASK Scalpel Blade Remover

Swann-Morton LIMITED

A safe, quick and easy single-handed method for scalpel blade removal. The puncture proof sharps container shuts off automatically when it is full, and can be disposed of safely. Suitable for wall or surface mounting using the purpose designed bracket.



Code	Description	List Price, €	Offer Price, €
B2B06042	BladeFLASK scalpel blade remover	53.30	40.04
B2B06044	Mounting bracket	14.56	10.92



SLS Select Slides with Ground Edge, 76 x 26 x 1mm Supplied in packs of 50

Code	Description	List Price, €
MIC2000	Plain	7.80
MIC2002	Twin frost	3.90

Portwest® 2852 Standard White Lab Coats

PORTWEST

- Concealed stud front for easy access
- Two lower patch pockets and a single chest pocket for ample storage
- Non shrinking to ensure that this style maintains its shape wash after wash
- Excellent dye retention, making the garment look newer for longer
- 65% polyester, 35% cotton
- Garment decoration with logo or embroidery available - please enquire



Code	Size	List Price, €	Offer Price, €
B2B8186	2X Small	32.63	26.13
B2B8188	X Small	32.63	26.13
B2B8190	Small	32.63	26.13
B2B8192	Medium	32.63	26.13
B2B8194	Large	32.63	26.13
B2B8196	X Large	32.63	26.13
B2B8198	2X Large	32.63	26.13
B2B8200	3X Large	32.63	26.13
B2B8202	4X Large	32.63	26.13
B2B8204	5X Large	32.63	26.13

Unigloves® BioTouch Biodegradable Nitrile Gloves



UNIGLOVES®
KEEPING YOU SAFE

BioTouch contains a biodegradable technology that kickstarts a biodegradation process only when discarded in an active landfill environment, making these gloves more environmentally friendly with a much faster natural breakdown compared to regular nitrile.



- Latex, powder and phthalate free
- Beaded cuff, textured fingertips
- Length: 240 mm
- AQL 1.5
- Tested to ASTM D5511 and ASTM D5526 - 90% degradation in 490 days compared to regular nitrile
- EN ISO 374-1:2016 Type C K (chemical risks)
- EN 374-5:2016 VIRUS (protection against viruses, bacteria and fungi)
- EN 455-1/2/3/4:2000 (medical gloves for single use)
- EN1186 (food contact)

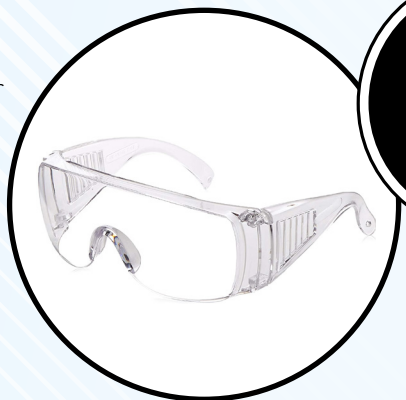


Code	Size	Pack	List Price, €	Offer Price, €
B2B9000	Small	1000	141.70	113.10
B2B9002	Medium	1000	141.70	113.10
B2B9004	Large	1000	141.70	113.10
B2B9006	X Large	1000	141.70	113.10

Portwest® PW30 Safety Visitor Glasses

PORTWEST

- Moulded-in brow guard and vented side shields for excellent side protection
- Can be worn over prescription glasses
- 100% metal free
- 99% UV protection
- Anti-scratch



30% OFF

Code	Frame/Arm Colour	Lens Colour	List Price, €	Offer Price, €
B2B8220	Clear	Clear	5.66	3.97



Portwest® PW31 Contoured Safety Spectacles

- Ultralight: 40g
- Moulds in to the facial features, providing brow protection and cheek guard
- Fully adjustable temple length
- 99% UV protection
- Anti-scratch

30% OFF

Code	Frame/Arm Colour	Lens Colour	List Price, €	Offer Price, €
B2B9008	Black	Clear	7.07	4.95

Derma Shield Aerosol Skin Barrier

Derma Shield is the solution that skin's been waiting for: it moisturises, nurtures and protects despite repeated washing. In addition to fast and effective moisturisation, Derma shield prevents irritant contact dermatitis by providing an invisible, non-greasy and non-toxic barrier that protects all skin areas. It also protects against most skin abusers, such as harsh soaps and detergents, alcohol, oil and grease, solvents, chemicals, paints and inks. It provides emergency protection against bases and most acids too.

- Skin breathes and perspires normally
- One application lasts 4 hours despite repeated washing: more cost effective than traditional barrier creams
- Clinically and laboratory tested
- Safe and effective under gloves
- Reduces use of heavy grade skin cleansers

15% OFF



Code	Size	Pack	List Price, €	Offer Price, €
B2B9010	50mL	24	336.70	286.00
B2B9012	150mL	12	322.40	274.30
B2B9014	500mL	6	322.40	274.30

General Purpose & Analytical Reagents

Code	Description	Pack	List Price, €	Offer Price, €
CHE1128	Ammonia solution 35% w/w A.R.	2.5L	72.94	28.55
31114-1KG	Ammonium nitrate	1kg	81.22	20.93
31146-500G	Boric acid	500g	42.35	25.29
CHE1574	Chloroform pure	2.5L	84.50	39.77
31277-100G	Cobalt(II) chloride hexahydrate	100g	246.17	165.12
CHE2036	Formaldehyde solution, 40% w/v pure	2.5L	57.20	19.36
CHE1806	D(+)-glucose anhydrous pure	1kg	52.00	20.68
CHE2068	Glycerol A.R.	2.5L	79.30	27.14
CHE2202	Hydrogen peroxide 30% w/v pure	2.5L	57.19	13.57
12354-1KG	Iron(II) sulfate heptahydrate	1kg	43.36	29.03
CHE2456	Magnesium sulphate 7H ₂ O pure	1kg	28.60	13.06
CHE2918	Potassium chloride pure	500g	22.10	11.45
CHE1864	Di-potassium hydrogen orthophosphate anhydrous pure	500g	68.90	15.83
CHE3036	Potassium iodide pure	100g	59.80	30.96
30315-500G	Potassium iodide	500g	262.42	43.09
CHE5002	Oleic acid pure	500mL	35.10	15.15
CHE3316	Sodium chloride A.R.	500g	31.20	14.53
CHE3320	Sodium chloride pure	5kg	57.20	19.01
CHE6036	Sodium chloride pure	10kg	57.20	37.03
CHE3342	Sodium fluoride pure	250g	67.73	16.02
CHE3346	Sodium hexametaphosphate powder	500g	29.90	12.96
CHE3358	Sodium hydrogen carbonate pure	1kg	23.40	12.37
CHE3436	Sodium hydroxide solution 40% w/v	5L	65.00	22.33
71696-2.5L	Sodium hypochlorite solution	2.5L	74.13	15.00
71640-1KG	Sodium phosphate dibasic	1kg	119.42	77.49
13464-1KG	Sodium sulphate	1kg	36.78	14.30
CHE4138	Zinc sulphate 7H ₂ O	5kg	431.60	111.78

Solvents

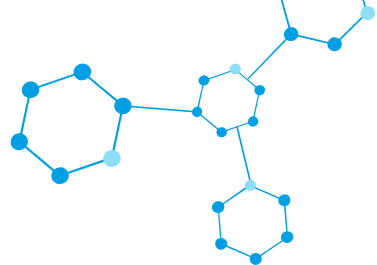
Code	Description	Pack	List Price, €	Offer Price, €
33539-2.5L	2-Propanol	2.5L	165.29	19.40
32201-2.5L	Acetone	2.5L	77.62	12.18
24233-2.5L	Dichloromethane	2.5L	111.62	13.81
32203-2.5L	Diethyl ether	2.5L	122.41	18.56
32221-2.5L	Ethanol (Untaxed)	2.5L	152.88	15.01
458600-2.5L	Ethanol denatured (Untaxed)	2.5L	68.95	17.19
27227-2.5L	Ethyl acetate	2.5L	110.03	41.57
32287-2.5L	Heptane	2.5L	215.84	38.48
139386-2.5L	Hexane	2.5L	165.24	110.83
32213-2.5L	Methanol	2.5L	79.19	13.63
32299-2.5L	Petroleum ether	2.5L	140.15	20.75
87368-1L	Tetrahydrofuran	1L	94.75	76.68
32249-2.5L	Toluene	2.5L	129.20	14.55
16446-2.5L	Xylenes	2.5L	147.21	32.88

Volumetric Solutions

Code	Description	Pack	List Price, €	Offer Price, €
CHE2170	Hydrochloric acid 0.1M (N/10)	2.5L	31.20	13.41
CHE2174	Hydrochloric acid 0.1M (N/10)	5L	54.60	18.69
CHE2166	Hydrochloric acid 1.0M (N/1)	1L	20.80	10.91
CHE2164	Hydrochloric acid 1.0M (N/1)	2.5L	29.90	13.58
CHE2126	Hydrochloric acid 2.0M (2N)	2.5L	59.80	14.92
CHE2774	Perchloric acid 0.1M (N/10)	2.5L	143.00	50.89
CHE2846	Phenolphthalein solution	500mL	29.90	8.89
CHE2992	Potassium hydroxide 0.1M (N/10)	2.5L	55.90	18.67
CHE3378	Sodium hydroxide 0.1M (N/10)	2.5L	28.59	13.02
CHE3382	Sodium hydroxide 0.1M (N/10)	5L	49.40	18.55
CHE3406	Sodium hydroxide 0.111M (N/9)	5L	53.30	18.55
CHE3372	Sodium hydroxide 1.0M (N/1)	2.5L	40.09	13.45
CHE3230	Silver nitrate 0.1M (N/10)	2.5L	457.60	218.96
CHE3700	Sulphuric acid 2.0M (4N)	1L	24.70	11.06

Chemicals Continued

GREAT SAVINGS!



Acids & Bases

Code	Description	Pack	List Price, €	Offer Price, €
33209-2.5L	Acetic acid	2.5L	136.01	14.65
221228-1L	Ammonium hydroxide solution	1L	44.26	27.82
30721-2.5L	Hydrochloric acid	2.5L	58.60	8.96
438073-2.5L	Nitric acid	2.5L	325.98	113.45
30417-2.5L	Phosphoric acid	2.5L	202.18	30.33
221473-1KG	Potassium hydroxide	1kg	65.64	42.73
S5881-1KG	Sodium hydroxide	1kg	73.18	51.54
30743-2.5L	Sulphuric acid	2.5L	105.24	13.43

SLS Lab Pro Lab Chairs

3 YEARS NEW

SLS LAB PRO

- Ergonomically designed
- Height adjustable backrest and seat
- Soft and comfortable upholstery
- Made from recyclable material
- Safety tested
- Choice of castors or glides

30% OFF



Code	Description	Material	Height, mm	List Price, €	Offer Price, €
B2B9368	Low chair on castors	Synthetic leather	440-620	348.40	244.40
B2B9370	High chair on glides	Synthetic leather	580-850	414.70	289.90
B2B9372	Standing rest chair on glides	Integral foam	510-780	339.30	237.90

SLS Select Low Form Beakers



- Ideal for general laboratory use
- White graduations and marking spot
- Made from high quality borosilicate glass
- High chemical and thermal resistance
- Staple item of any laboratory
- Standards equivalent to ISO 3819

65% OFF



Code	Capacity, mL	Dims, Ø x h, mm	Pack	List Price, €	Offer Price, €
B2B06332	25	34 x 50	12	15.09	5.28
B2B06334	50	42 x 60	12	16.38	5.73
B2B06336	100	50 x 70	12	23.40	8.19
B2B06338	150	60 x 80	12	28.60	10.01
B2B06340	250	70 x 95	12	33.80	11.83
B2B06342	400	80 x 110	12	36.79	12.88
B2B06344	600	90 x 125	6	28.60	10.01
B2B06346	1000	105 x 145	6	34.45	12.06

SLS Select Conical Flasks



- With white graduations and marking spot
- Made from high quality borosilicate glass
- High chemical and thermal resistance
- Used for many laboratory applications
- Standards equivalent to ISO 1773



Code	Capacity, mL	Dims, h x Ø x neck Ø, mm	Pack	List Price, €	Offer Price, €
B2B06358	50	80 x 54 x 24	12	42.64	14.92
B2B06360	100	105 x 64 x 29	12	46.80	16.38
B2B06362	250	145 x 85 x 31	6	31.20	10.92
B2B06364	500	184 x 103 x 36	6	37.70	13.20
B2B06366	1000	131 x 214 x 42	6	53.82	18.84

SLS Select Media Bottles



- Perfect for everyday laboratory use
- Suitable for many applications, such as storage of culture media
- Made from high quality borosilicate glass 3.3 to ISO 3585
- Heat and chemical resistance
- GL45 blue polypropylene cap and pouring ring
- White graduations and marking spot
- Sloped shoulders for easy pour
- Standards to ISO 4796-1



Code	Capacity, mL	Dims, Ø x h, mm	Pack	List Price, €	Offer Price, €
B2B06348	100	56 x 100	10	45.50	13.85
B2B06354	250	70 x 138	10	54.60	16.51
B2B06350	500	86 x 176	10	63.70	19.50
B2B06352	1000	101 x 225	10	88.40	31.59
B2B06356	2000	136 x 260	10	162.50	59.54
B2B8342	5000	186 x 330	Each	175.50	63.70
B2B8344	10000	234 x 410	Each	301.60	102.70
B2B8346	20000	299 x 505	Each	461.50	169.00

SLS Select Measuring Cylinders

- Calibrated to Class B tolerances
- Can be used for many applications where a high accuracy level of volume measurement isn't critical
- Made from high quality borosilicate glass
- High chemical and thermal resistance
- Sturdy hexagonal glass base
- White graduations
- Standards equivalent to ISO 4788

65%
OFF



Code	Capacity, mL	Height, mm	Pack	List Price, €	Offer Price, €
B2B06368	10	135	2	10.40	3.64
B2B06370	25	160	2	11.70	4.10
B2B06372	50	195	2	13.00	4.55
B2B06374	100	250	2	16.90	5.92
B2B06376	250	300	2	27.30	9.56
B2B06378	500	350	2	41.60	14.56
B2B06380	1000	430	Each	31.20	10.92

PYREX® Borosilicate Glass Rimless Test Tubes

- PYREX® borosilicate glass
- Allows use at high temperatures - up to 500°C
- Excellent resistance to chemical attack

40%
OFF

Code	Dims, Ø x h, mm	Pack	List Price, €	Offer Price, €
B2B9278	12 x 100	100	88.40	53.30
B2B9280	16 x 100	100	115.70	68.90
B2B9282	16 x 150	100	114.40	68.90
B2B9284	16 x 160	100	136.50	81.90

Gratnells Trays

5
YEARS

Gratnells
Everything in its place.

Handy trays with robust, polypropylene construction.

60%
OFF

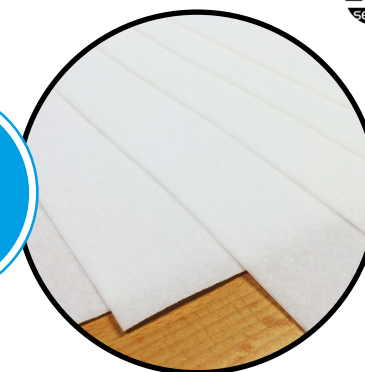


Code	Description	Colour	Dims, l x w x h, mm	List Price, €	Offer Price, €
B2B06082	F1 shallow	Royal blue	427 x 312 x 75	15.57	6.23
B2B06084	F1 shallow	Flame red	427 x 312 x 75	15.57	6.23
B2B06086	F1 shallow	Translucent	427 x 312 x 75	15.57	6.23
B2B06090	F2 deep	Royal blue	427 x 312 x 150	28.34	11.34
B2B06092	F2 deep	Flame red	427 x 312 x 150	28.34	11.34
B2B06088	F2 deep	Translucent	427 x 312 x 150	26.91	10.76

SLS Select BenchSafe Bench Protection

Strong, tear-resistant, waterproof polyethylene surface.

60%
OFF



Code	Description	Dims, w x l, mm	Pack	List Price, €	Offer Price, €
B2B06046	BenchSafe	490 x 50000	1 roll	306.80	122.20
B2B06048	BenchSafe	460 x 570	50 sheets	273.00	109.20
B2B06050	BenchSafe	600 x 490	100 sheets	315.90	126.10
B2B06052	BenchSafe Plus	600 x 490	50 sheets	261.30	104.00

Plastic Tray Trolleys

- Lightweight
- Supplied with precision bearing castors including 2 brakes
- Ergonomic in design and attractive in appearance
- Heavy duty construction from high quality, nylon fibre blended polymers



Code	Shelves	Dims, w x d x h, mm	Platform Dims, mm	Max Load, kg	List Price, €	Offer Price, €
B2B06076	3	460 x 750 x 980	630 x 424	150	248.30	174.20
B2B06078	2	460 x 750 x 940	630 x 424	100	211.90	148.20
B2B06080	2	513 x 990 x 970	866 x 500	250	440.70	308.10

QMP Hazardous Storage Cabinets

1
YEAR



- 'No snag' handles with 2-point locking mechanism
- 0.7mm mild steel, pop riveted carcass construction
- Warning stickers supplied as standard
- Adjustable spill-retaining galvanised shelves for superior spill management with a UDL of 70kg
- Integral liquid-tight sump
- Powder coated yellow with Germ Guard Active Technology paint
- Reaction to Fire Classification EN 13501-1



Code	Dims, w x d x h, mm	No. of Shelves	Sump Capacity, L	List Price, €	Offer Price, €
B2B8214	350 x 300 x 700	1	3	375.70	319.80
B2B8210	460 x 460 x 900	1	7	445.90	379.60
B2B8216	900 x 460 x 700	1	14	518.70	440.70
B2B8212	900 x 460 x 900	1	14	568.10	482.30
B2B8206	900 x 460 x 1800	3	14	843.70	717.60
B2B8208	1200 x 460 x 1800	3	18	994.50	845.00

SLS Select Reagent Reservoirs



- "V" shaped well design for maximum reagent recovery
- Easy to read graduation markings located on the top edge with a fill line on inner walls
- Drip free pour-off spouts at every corner
- Manufactured in a clean room with sterile versions certified as RNase/DNase and pyrogen free
- Wide base for stability
- Tiered wall design prevents deformation when handling and reduces the chance of spills
- Nesting design allows easy separation that reduces the chance of warping or damage
- Lot numbers indicated on sterile versions
- Polystyrene

**35%
OFF**



Code	Capacity, mL	Sterility	Inner Pack	Pack	List Price, €	Offer Price, €
B2B06039	25	Sterile	1	100	152.10	98.80
B2B06041	25	Sterile	5	200	182.00	118.30
B2B06043	25	Non sterile	Bulk	100	63.31	41.21
B2B06045	50	Sterile	1	100	198.90	130.00
B2B06047	50	Sterile	5	200	191.10	124.80
B2B06049	50	Non sterile	Bulk	100	67.60	43.94
B2B06051	100	Sterile	1	100	185.90	120.90
B2B06053	100	Sterile	5	200	218.40	141.70
B2B06055	100	Non sterile	Bulk	100	70.20	45.63

SLS Select Pipette Filter Tips



- Unique low binding filter tips which feature an inert, hydrophobic barrier that prevents pipette contamination
- Patented, super-micron barrier prevents pipette contamination
- Barrier will not trap liquid or contaminate samples if over-pipetting
- Reduced barrier thickness allows unrestrained air flow for exceptional accuracy and precision
- Sterile
- Free from DNase, RNase, endotoxins and pyrogens
- Long reach tips avoid the need to insert pipette cone into the sample tube, reducing contamination risk (B2B9354 + B2B9366)

**UP TO
71%
OFF**



Code	Volume, µL	Pack	List Price, €	Offer Price, €
B2B9352	10	10 x 96	169.00	49.40
B2B9354	10	10 x 96	132.60	49.40
B2B9356	20	10 x 96	153.40	49.40
B2B9358	100	10 x 96	153.40	49.40
B2B9360	200	10 x 96	154.70	49.40
B2B9362	300	10 x 96	162.50	50.70
B2B9364	1000	10 x 100	163.80	50.70
B2B9366	1250	8 x 96	162.50	52.00

SLS Select Deep Well Storage Plates



- High performance plates produced in cleanrooms that are certified for medical device assembly.
- Manufactured in pure virgin medical grade polypropylene with class leading low levels of extractable elements
- ANSI-SBS footprint
- Tested for low extractables
- Alphanumeric reference grid
- Suitable for automated or manual applications
- For use in sample storage at 86°C to DNA denaturation at 100°C
- Autoclavable
- No inner edges to allow better collection of magnetic beads
- Manufactured under DNase/ RNase free environment



Sealing Mats

Code	Description	Pack	List Price, €	Offer Price, €
B2B8330	96 square well silicone sealing mat, can be punctured	50	542.10	189.80
B2B8332	96 round well silicone sealing mat for 1.0mL plates, can be punctured	50	542.10	189.80
B2B8334	96 round well silicone sealing mat for 2.0mL plates, can be punctured	50	542.10	189.80
B2B8338	96 round well silicone sealing mat for 2.0mL plates, cross cut	50	542.10	189.80
B2B8340	384 square well silicone sealing mat	50	542.10	189.80

Square Well

Code	No. of Wells	Well Volume, mL	Bottom	Colour	Sterility	Pack	List Price, €	Offer Price, €
B2B8304	96	2	V	Natural	Non sterile	50	232.70	81.90
B2B8306	96	2	V	Black	Non sterile	50	256.10	89.70
B2B8308	96	2.2	V	Natural	Non sterile	50	408.20	143.00

Round Well

Code	No. of Wells	Well Volume, mL	Bottom	Colour	Edges	Sterility	Pack	List Price, €	Offer Price, €
B2B8314	96	1	U	Natural	Rimmed	Non sterile	50	273.00	96.20
B2B8316	96	1	U	Black	Rimmed	Non sterile	50	253.50	88.40
B2B8318	96	1	U	Black	Rimless	Non sterile	50	273.00	96.20
B2B8320	96	1.2	U	Natural	Rimmed	Non sterile	50	504.40	176.80
B2B8322	96	1.2	U	Natural	Rimless	Non sterile	50	283.40	98.80
B2B8324	96	2	U	Natural	Rimmed	Non sterile	50	510.90	179.40
B2B8326	96	2	U	Natural	Rimmed	Sterile	50	633.10	222.30

SLS Lab Pro Variable Volume Pipettes

3
YEARS

The SLS Lab Pro pipettes offer superior quality at an affordable price. These are lightweight pipettes with a handle that fits naturally in the hand. A lubricated piston assembly offers very light pipetting forces.



UP TO
**43%
OFF**

- Adjustable tip ejector button to adapt to both right- and left-handed users
- Clip mechanism allows easy and safe removal of tip ejector
- Fully autoclavable

Code	Channel	Volume Range, µL	List Price, €	Offer Price, €
B2B06292	Single	0.2 - 2	287.30	175.50
B2B06294	Single	1 - 10	287.30	175.50
B2B06296	Single	2 - 20	287.30	175.50
B2B06298	Single	10 - 100	287.30	175.50
B2B06300	Single	20 - 200	287.30	175.50
B2B06302	Single	100 - 1000	287.30	175.50
B2B06304	Single	500 - 5000	327.60	188.50
B2B06306	Single	1000 - 10000	327.60	188.50
B2B06308	8	0.5 - 10	676.00	387.40
B2B06310	8	2 - 20	676.00	387.40
B2B06312	8	20 - 200	676.00	387.40
B2B06314	8	20 - 300	676.00	387.40
B2B06316	12	0.5 - 10	772.20	474.50
B2B06318	12	2 - 20	772.20	474.50
B2B06320	12	20 - 200	772.20	474.50
B2B06322	12	20 - 300	772.20	474.50



SLS Lab Basics Variable Volume Pipettes

3
YEARS



Single Channel:

- Ergonomic design ensuring light weight & soft plunger movement
- Click-stop system for volume selection
- Colour coded for easy identification
- Calibration conforms to EN-ISO 8655 with report enclosed with every pipette

UP TO
**73%
OFF**

Multi Channel:

- Smooth and light tip loading and ejection
- Leak free sealing of tips
- Manifold is easily removable, fully autoclavable and can rotate 360° for easy right or left hand operation



Code	Channel	Volume Range, µL	Compatible Tips	List Price, €	Offer Price, €
B2B06156	Single	0.1 - 2.5	10µL/10XL	188.50	61.10
B2B06158	Single	0.5 - 10	10µL/10XL	188.50	61.10
B2B06160	Single	2 - 20	10XL	188.50	61.10
B2B06162	Single	5 - 50	20µL/100µL	188.50	61.10
B2B06164	Single	10 - 100	100µL/200µL	188.50	61.10
B2B06166	Single	20 - 200	200µL/300µL	188.50	61.10
B2B06168	Single	100 - 1000	1000µL/1250µL	188.50	61.10
B2B06170	Single	500 - 5000	—	224.90	67.60
B2B06172	Single	1000 - 10000	—	224.90	67.60
B2B06174	8	0.5 - 10	10µL/10XL	841.10	227.50
B2B06176	8	5 - 50	20µL/100µL	841.10	227.50
B2B06178	8	10 - 100	100µL/200µL	841.10	227.50
B2B06180	8	20 - 200	200µL/300µL	841.10	227.50
B2B06182	8	30 - 300	200µL/300µL	841.10	227.50

Thermo Scientific™ Finnpiquette™ F2 Pipettes

5
YEARS

Thermo
SCIENTIFIC

Meet the challenges of highly demanding applications where robustness and durability are essential with the sleek, rugged design of Thermo Scientific™ Finnpiquette™ F2 variable volume pipettes. Built with tough PVDF components that stand up to harsh chemicals and the damaging effects of UV light, these variable volume pipettes are fully autoclavable without disassembling.

- Rugged and durable
- Simply detach the tip cone for efficient daily maintenance or decontamination
- Super blow out button for volumes below 50µL ensure delivery of micro size drops
- Light pipetting action with soft touch tip ejection
- B2B9216, B2B9218, B2B9220 and B2B9238 feature micro tip



Code	Volume Range, µL	List Price, €	Offer Price, €
B2B9216	0.2 - 2	477.10	286.00
B2B9218	0.5 - 5	475.80	286.00
B2B9220	1 - 10	475.80	286.00
B2B9222	1 - 10	475.80	286.00
B2B9224	2 - 20	475.80	286.00
B2B9226	2 - 20	475.80	286.00
B2B9238	5 - 50	475.80	286.00
B2B9240	5 - 50	475.80	286.00
B2B9228	10 - 100	475.80	286.00
B2B9230	20 - 200	475.80	286.00
B2B9232	100 - 1000	475.80	286.00
B2B9234	500 - 5000	499.20	299.00
B2B9236	1000 - 10000	499.20	299.00

Gilson PIPETMAN® Manual Pipettes

3
YEARS

GILSON

Offering one of the lowest pipetting forces commercially available with a redesigned piston assembly system and high quality piston grease for comfortable pipetting. It relies on the legendary accuracy, precision, and reliability of PIPETMAN®, with improved pipetting comfort. Made of PVDF and stainless steel for premium durability. The new clip ejector allows for convenient access to serviceable parts.



Code	Channel	Volume Range, µL	List Price, €	Offer Price, €
B2B06474	Single	0.2 - 2	322.40	176.80
B2B06476	Single	1 - 10	322.40	176.80
B2B06478	Single	2 - 20	351.00	193.70
B2B06480	Single	10 - 100	322.40	176.80
B2B06482	Single	20 - 200	322.40	176.80
B2B06484	Single	100 - 1000	351.00	193.70
B2B06486	Single	500 - 5000	322.40	176.80
B2B06488	Single	1000 - 10000	322.40	176.80
B2B06490	8	1 - 10	877.50	482.30
B2B06492	8	2 - 20	877.50	482.30
B2B06494	8	20 - 200	877.50	482.30
B2B06496	8	30 - 300	877.50	482.30
B2B06498	12	1 - 10	1024.40	562.90
B2B06500	12	2 - 20	1024.40	562.90
B2B06502	12	20 - 200	1024.40	562.90
B2B06504	12	30 - 300	1024.40	562.90

Corning® Lambda™ Plus Pipette Starter Kit



All Lambda™ Plus pipettors feature smooth plunger movement and extremely low pipetting forces. Volume can be set by turning either the thumb wheel or the plunger button, and a locking mechanism prevents accidental change. Designed to maintain their calibration, even after repeated use and autoclaving. A key is included with each pipettor for easy in-house calibration.

- Factory calibrated to strict ISO 8655 standards
- Fully autoclavable and UV resistant
- Designed for universal fit with all common brands of pipette tips
- Adjustable tip ejector

Includes: 4 x single-channel pipettes (0.5 to 10µL, 2 to 20µL, 20 to 200µL, 100 to 1000µL), universal carousel rack for 6 single channel pipettes, 3 x Corning DeckWorks™ pipette tips (10µL, 200µL, 1000µL).



Code

B2B06428

List Price, €

1012.70

Offer Price, €

526.50

Corning® Lambda™ EliteTouch™ Pipette Starter Kit

Engineered to provide the highest level of ergonomic, accuracy, and precision. Features smooth plunger movement and extremely low pipetting forces to reduce wrist strain and fatigue (RSI). Coloured pushbuttons (included) can help define user or application for sample safety and lower risk of cross contamination.



Includes: 4 x single channel pipettes (0.5 to 10µL, 2 to 20µL, 20 to 200µL, 100 to 1000µL), universal linear stand for 4 single channel pipettes, 3 x Corning® DeckWorks pipette tips (10µL, 200µL, 1000µL), 4 x 3 x coloured pushbuttons.

Code	List Price, €	Offer Price, €
B2B06432	1281.80	772.20

- Ergonomic handle design for perfect fit for both right and left hand
- Convenient one-hand volume setting with auto-lock system
- 4-digit counter for greater precision, perfectly positioned for visibility at all times
- Fully autoclavable and UV resistant
- Easy in-lab calibration helps you quickly adjust your pipettor to various liquid types
- Individually tested and supplied with a certificate of quality



PYREX® Volumetric Flasks, Class A

PYREX®

- Complies with ISO 1042 and DIN 12664
- Each flask is laser etched with an individual serial number batch code and date of manufacture
- Manufactured from chemically resistant PYREX® glass
- Inscriptions in white enamel
- Polyethylene stopper



Code	Capacity, mL	Pack	List Price, €	Offer Price, €
B2B8048	20	5	84.50	42.25
B2B8050	25	5	84.50	42.25
B2B8052	50	5	87.10	43.55
B2B8054	100	5	107.90	53.95
B2B8056	250	2	59.80	29.90
B2B9286	5000	Each	232.70	117.00

SLS Lab Basics Bottle Top Dispensers

2
YEARS



Ergonomically designed for easy use and outstanding performance, in addition to being extremely durable and reliable. Calibrated in ISO 17025 accredited calibration facility.

- Fully autoclavable
- Easy re-calibration: a single tool to recalibrate
- Volume lock: smooth and accurate volume setting
- Universal bottle adaptor: comes with 4 additional adaptors for regular bottle sizes
- Uncomplicated mounting: snap-fit mounting of discharge tube



50%
OFF



Code	Volume Range, mL	Graduations, mL	List Price, €	Offer Price, €
B2B06184	1 - 10	0.2	314.60	157.30
B2B06186	2.5 - 30	0.5	357.50	179.40
B2B06188	5 - 60	1.0	357.50	179.40
B2B9378	10 - 100	2.0	377.00	188.55

SLS Select Serological Pipettes



60%
OFF

- Manufactured in compliance with the current versions of the ISO 13485 and FDA CFR 21 Part 820, cGMP
- Made from USP Class VI polystyrene resin
- Crisp, dark ascending and descending as well as negative graduations
- Colour-coded rings for easy identification
- Plugged
- Non-pyrogenic
- RNase-/DNase-free
- Sterile



Code	Volume, mL	Packaging	Inner Pack	Pack	List Price, €	Offer Price, €
B2B06382	1	Individual	100	1000	223.60	89.70
B2B06384	1	Bulk	25	1000	175.50	70.20
B2B06386	2	Individual	100	1000	261.30	104.00
B2B06388	2	Bulk	25	1000	189.80	75.40
B2B06392	5	Individual	50	200	67.60	27.04
B2B06390	5	Bulk	25	500	178.10	71.50
B2B06394	10	Individual	50	200	71.50	28.60
B2B06396	10	Bulk	25	500	228.80	91.00
B2B06400	25	Individual	50	200	158.60	63.44
B2B06398	25	Bulk	20	200	265.20	106.60
B2B06402	50	Individual	20	100	204.10	81.90

SLS Lab Basics Pipette Filler

5 YEARS



Lightweight, UV resistant material, featuring adjustable valves and 3 modes (high, low, gravity). Filling and dispensing speed is easily set using the same hand by pressing the large mode button. Uses standard 0.45µm hydrophobic filters. Supplied with charger, bench stand, magnetic/fixable wall mount and 5 coloured nose cones.



Code	List Price, €	Offer Price, €
B2B06190	310.70	143.00

Corning® Stripettor™ Ultra Pipette Controller

2 YEARS



This light, ergonomic, motorised pipette controller is designed for use with glass and plastic serological pipets from 0.5-100mL. Conveniently positioned switches change operating modes and speeds quickly to handle different liquid volumes and various viscosities. When fully charged, the batteries enable up to 8 hours of continuous use. The large LCD display clearly indicates battery status, pipetting mode, and speed.

Supplied with universal charging adapter, 2x 0.2µm filter, 3x coloured nose - pieces, wall-mounted holder, and charging stand.



Code	List Price, €	Offer Price, €
B2B06430	416.00	189.80

SLS Select PES Syringe Filters



The highly asymmetrical pore structure of PES membranes offers an excellent loading capacity and high flow rate for these naturally hydrophilic syringe filters. Moulded in a polypropylene shelter.

- Diameter: 25mm
- Sterile
- Recommended for preparation of protein samples, ultra-fast filtration of tissue culture media

Supplied in packs of 50, individually wrapped



Code	Pore Size, µm	List Price, €	Offer Price, €
B2B06412	0.22	93.60	31.20
B2B06414	0.45	93.60	31.20

SLS Flowgen multiSUB Mini Horizontal Electrophoresis Systems



The multiSUB Mini is the smallest multiSUB in the range and ideal for routine molecular biology applications. The small gel size maximises run economy but does not compromise versatility as two tray options are available. Simply by altering the gel tray or comb, this compact unit is capable of resolving up to 64 different samples, prepping 1mL of sample or separating sample bands over a distance of 9cm.

- Available with 70 x 70mm, 70 x 100mm, or with both gel trays
- Economic low gel and buffer volumes
- Small lab bench footprint
- Complete with 2 x 8 sample combs (1mm), loading guides and dams



Code	Description	Gel Dims, w x l, mm	Max Capacity	List Price, €	Offer Price, €
MSMINI7	multiSUB Mini 7	70 x 70	32 samples	445.90	312.00
MSMINI10	multiSUB Mini 10	70 x 100	64 samples	444.60	310.70
MSMINIDUO	multiSUB Mini Duo	70 x 70 & 70 x 100	64 samples	476.00	333.00

SLS Flowgen nanoPAC-300P Power Supply

2
YEARS



Ultra compact and economical unit, ideal for use with DNA/RNA (horizontal) and protein (vertical) electrophoresis systems. A simple two step feature allows users to set a programmable change in voltage/ current/time during the run to provide increased versatility. Simply press MODE and program STEP 1 and STEP 2 to the desired setting and then start and the nanoPAC will automatically run the steps in sequence.

- Can be set on a continuous run or timed setting up to 999 minutes
- User friendly interface
- Easily adjustable in 1V and 1mA increments
- Compact size saves bench space
- Two pairs of parallel power terminals, which can run two electrophoresis units simultaneously
- Enhanced in built safety features
- Highly visible 3 digit LED display
- Alarm function
- Wipe clean polycarbonate housing

25%
OFF



Code	Max Voltage, V	Max Current, mA	Max Power, W	Output Pairs	Dims, w x d x h, mm	List Price, €	Offer Price, €
NANOPAC-300	300	400	60	2	140 x 191 x 84	560.30	419.90

SLS Flowgen powerPRO 300 Power Supply

2
YEARS



A versatile multi function power supply suitable for a wide range of electrophoresis applications. The powerPRO 300 is the ideal power supply for routine horizontal electrophoresis using multiSUB Mini, Midi and Choice and vertical electrophoresis using omniPAGE Mini.

- 2.4" LCD screen
- Browse preset and saved protocols, store up to 30 programmes with up to 6 steps
- Can be operated at constant voltage, constant current or constant power and
- Pause/resume key allows any run to be temporarily halted and restarted from the same position

25%
OFF



Code	Max Voltage, V	Max Current, mA	Max Power, W	Output Pairs	Dims, w x d x h, mm	List Price, €	Offer Price, €
ELE2600	300	700	150	5	215 x 335 x 104	655.20	491.40

Benchmark BenchBlotter™ Platform Rocker

2 YEARS

Benchmark Scientific

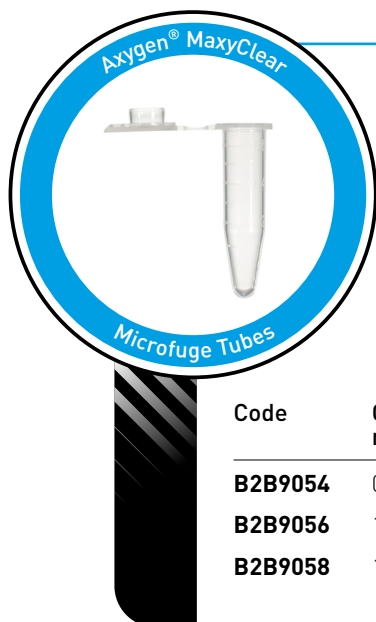
40% OFF

The BenchBlotter™ is an economical “workhorse” rocker, designed for common molecular lab applications such as blotting, staining/destaining etc. There are no complicated controls, no settings or adjustments to be made; just press the power switch and start rocking.

- Optimised for blot washing and gel staining
- Gentle mixing, fixed speed 12rpm $\pm 8^\circ$ tilt
- Dual platform accessory doubles work surface
- Cold room and incubator safe



Code	Platform Dims, mm	Dims, w x d x h, mm	List Price, €	Offer Price, €
B2B9018	300 x 300	340 x 300 x 120	768.30	461.50



Axygen® MaxyClear Microfuge Tubes

UP TO 76% OFF

- Will withstand up to 14,000 RCF
- Snaplock cap assures efficient seal
- RNase-/DNase-free and nonpyrogenic

Code	Capacity, mL	Pack	List Price, €	Offer Price, €
B2B9054	0.6	10 x 1000	624.00	221.00
B2B9056	1.5	10 x 500	312.00	106.60
B2B9058	1.7	10 x 500	351.00	85.80

SLS Lab Basics my-FUGE 12 Place Centrifuge

2 YEARS

LAB BASICS

Eliminate the need to change rotors when switching between microtubes and PCR strips with the unique COMBI-Rotor™ (included) allowing the running of 12 x 1.5/2.0mL microtubes and 4 PCR strips simultaneously. With a fixed speed that produces 2000xg, this centrifuge is perfect for quick spin downs.

- Twice the capacity of most mini centrifuges
- Near silent operation
- Starts and stops with closing/opening of the lid
- Conserves valuable bench space

50% OFF



Code	Max Speed, RPM	Max RCF, xg	Dims, w x d x h, mm	List Price, €	Offer Price, €
B2B7092	5500	2000	146 x 203 x 108	798.20	399.10

SLS Lab Basics 12 Place Microcentrifuge

2 YEARS



Compact and powerful high-speed centrifuge, ideal for research applications including sedimentation of cells and viruses and isolation of macromolecules such as DNA, RNA, proteins or lipids. It consists of a large LCD display which provides all visual information and a unique cooling design which minimises rotor heating.

- Whisper quiet operation - less than 49dB
- Automatic door lock
- Automatic internal diagnosis
- Polypropylene rotor is fully autoclavable
- Run time: 30 sec - 99 min
- Pulse operation for quick spins
- Sound-alert function
- Over-temperature and over-speed detector
- Supplied with 12 position 1.5/2.0mL microtube rotor



Code	Max Speed, RPM	Max RCF, xg	Dims, w x d x h, mm	List Price, €	Offer Price, €
B2B06204	15000	15100	245 x 255 x 140	1851.20	741.00

SLS Lab Basics Mini Centrifuge

2 YEARS



Ideal for microfiltration and quick spin downs from the walls and caps of microcentrifuge tubes. The compact design saves bench space and features an easy-open clear lid. Simply close the lid for acceleration and open the lid for deceleration, or alternatively use the on/off switch to control.

- Easy-to-use with dual start/stop function
- Compact design
- Whisper quiet operation
- Ideal for quick spin downs of microtubes and PCR tubes
- Universal voltage
- Rotor change without tools
- Accelerates and brakes in seconds
- Supplied with 8 place 1.5/2.0mL microtube rotor and 16 place (2 x 8 strips) PCR rotor



Code	Max Speed, RPM	Max RCF, xg	Dims, w x d x h, mm	List Price, €	Offer Price, €
B2B06202	7000	2680	160 x 170 x 122	260.00	123.50

SLS Flowgen Plate Spinner

2 YEARS



Rapidly spin down droplets in PCR or microplates to improve PCR yields or give more consistent assay results. The swing out rotor has two plate carriers that rest at a 75° angle. This allows plates to be inserted confidently without sealing tapes or caps. Most samples can be spun down in less than 20 seconds. To end a run, simply open the lid and the automatic, electric brake brings the rotor to a quick, smooth stop in just 4 seconds.

- Unique swing-out rotor design prevents spillage
- Accepts most types of PCR plates
- Capacity: 2 x PCR plates (when stacking skirted PCR plates, max. capacity is 4 plates); 2 x microplates
- Remarkably small footprint

48% OFF



Code	Max Speed, RPM	Max Speed, x g	Dims, w x d x h, mm	List Price, €	Offer Price, €
B2B06236	2550	600	230 x 260 x 197	1241.50	643.50

SLS Flowgen 2D BenchRocker

2 YEARS



Designed to provide the precise speeds and tilt angles required for a broad range of molecular and biological mixing applications. The user can adjust both parameters to match the vessel size and the volume of liquid being mixed, yielding optimum results. Provides a gentle wave effect for non-foaming mixing, as is required for most blot washing and gel work. When set to higher speeds and more extreme tilt angles, they produce aggressive agitation for vigorous sample mixing.

- Accepts stackable platforms (clearance = 70mm)
- Adjustable speed and tilt for a wide range of applications
- Dual platform accessory doubles work surface
- Cold room and incubator safe

40% OFF



Code	Speed Range, RPM	Tilt Angle, °	Platform Dims, mm	Dims, w x d x h, mm	List Price, €	Offer Price, €
B2B7080	2 - 30	0 - 30	350 x 300	350 x 300 x 200	1245.40	747.50

SLS Flowgen 3D MiniMixer

2
YEARS



Multi-functional shaker which provides a 3-dimensional “nutating” motion for thorough, foam-free mixing in blood and centrifuge tubes, as well as in a variety of flat vessels. Feature maintenance free, brushless motors capable of loads up to 2kg and are safe for use in cold rooms and incubators.

- Includes dimpled mat; ideal for mixing in blood & centrifuge tubes
- Optional flat mats are also available for mixing other vessel types
- Stacking platforms sold separately, effectively doubling the usable surface area
- Tri-directional motion for thorough, uniform mixing

45%
OFF



Code	Speed, RPM	Tilt Angle, °	Platform Dims, mm	Dims, w x d x h, mm	List Price, €	Offer Price, €
B2B7082	24 (fixed)	20	270 x 190	270 x 190 x 200	681.20	374.40

SLS Lab Basics Vortex Mixer

2
YEARS



Compact and stable design with electronic speed control ensures the same speed is maintained at all times, even during changes of load and also features continuous or touch operation. The orbital diameter of 4mm provides effective and efficient mixing inside the sample.

- Quiet and compact stable design
- Continuous or touch operation
- Electronic speed control for constant speed even during changes in load
- Aluminium cast base with silicone feet for excellent stability and vibration damping



65%
OFF



Code	Speed Range, RPM	Dims, w x d x h, mm	Weight, kg	List Price, €	Offer Price, €
B2B06222	0 - 2500	127 x 160 x 130	3.5	367.90	130.00

SLS Lab Basics DigiRoll 6 Tube Roller

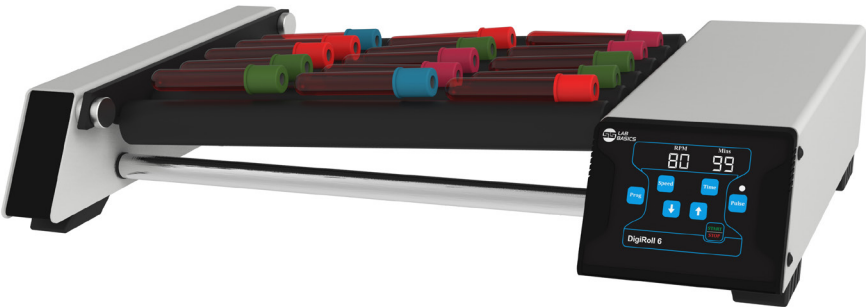
2 YEARS



6 tube roller providing a rocking and rolling motion for optimum mixing of viscous samples. Equipped with a powerful brushless DC motor for maintenance free long life and quiet operation. Microprocessor controller gives accurate speed under variable load, and the programming feature means the user can save and run up to 9 user defined programs.

- Digital display with soft touch keypad
- IP 21 protection class
- Timer from 1 min to 99 min and infinite mode
- User can set pulse time from 30 to 99 seconds
- Adjustable rollers spacing to hold different diameter tubes
- Stackable design with robust construction

40% OFF



Code	Capacity	Speed Range, RPM	Tilt Angle, °	Dims, w x d x h, mm	List Price, €	Offer Price, €
B2B06224	15 x 3/4mL tubes	10 - 80	±3	502 x 301 x 93	729.30	438.10

SLS Lab Basics 10 Roller Tube Roller

2 YEARS



Designed for gentle, thorough mixing. As the roller mechanism rotates through each complete revolution, the right side of each roller is gently elevated about 13mm and returns to the horizontal starting position. This additional, gentle up/down motion provides a “wave” effect and guarantees that the entire sample is subjected to complete, thorough mixing, end to end. This built in tilt feature provides a level of homogeneous mixing uniformity that cannot be matched by any stationary roller apparatus.

- Gentle rolling motion
- Smooth ±5° tilt action
- For tubes/bottles from 8 to 200mm diameter

30% OFF



Code	Speed Range, RPM	Dims, w x d x h, mm	List Price, €	Offer Price, €
B2B9036	38	450 x 180 x 90	1375.40	963.30

SLS Lab Basics Digital Orbital Shaker

5 YEARS



A dependable and versatile shaker for a vast range of protocols. Create your own matrix for vessels of all shapes and sizes with hi-lo platform and bungee cords. Instantly adjusts to weight load changes and unbalanced loads with no-stop electronic motor feedback allowing for truly reproducible results.

- Durable ABS construction suitable for use in incubators (excluding CO₂) and cold rooms within 2 to 40°C; 20 to 80% RH, non-condensing
- Run time: 0 to 74 hours and 59 minutes, 1 second increments or continuous
- Soft start and shut down feature reduces spilling from full vessels
- Designed to handle heavy loads up to 4.5kg
- Overload protection shut-off prevents overloading
- Supplied with skid-free rubber platform mat, 8 x bungee cords, universal hi-lo platform with soft rubber edge bumpers, power adapter (110-240VAC, 50/60 Hz) with 4 interchangeable plug types

40% OFF



Code	Orbit, mm	Speed Range, RPM	Platform Dims, mm	Dims, l x w x h, mm	List Price, €	Offer Price, €
B2B7300	19	20 - 300	279 x 279	314 x 197 x 314	1203.80	728.00

IKA Laboratory Mixers & Shakers

2 YEARS



A selection of IKA mixers and shakers for various laboratory applications. The VORTEX 3 is a durable vortex shaker suitable for short-time or continuous operation with a wide adjustable speed range, and is adaptable to different vessels with interchangeable attachments and inserts (sold separately). The popular lab dancer is designed for mixing small test samples at a fixed speed with excellent mixing action. It is small, compact and reliable, with a touch function. The ROCKER 3D digital offers 3D tumbling motion with a range of speed for smooth mixing of flasks, dishes and tubes. It features a digital display, timer functionality and adjustable angle ensuring optimum adaptability.

- Compact design
- Adaptable to specific applications
- Secure construction
- Reliable mixing

UP TO 40% OFF



Code	Description	Speed Range, RPM	Dims, w x d x h, mm	List Price, €	Offer Price, €
B2B9138	VORTEX 3	0 to 2500	127 x 149 x 136	582.40	436.80
B2B9140	lab dancer	2800	100 x 100 x 70	492.70	295.10
B2B9142	ROCKER 3D digital	0 to 80	280 x 330 x 185	1241.50	993.20

SLS Lab Pro Hydron Benchtop pH Meter

3 YEARS NEW



A reliable and economical benchtop meter for routine measurements of pH, mV and temperature. Featuring five-point calibration with auto-buffer recognition, automatic temperature compensation (ATC) and datalogging capabilities for the storage and recall of up to 100 data sets, the Hydron is well suited to routine applications across academic laboratories, industrial settings and education. A compact footprint, large easy-to-read display and splash-proof keyboard also make it user-friendly and space saving for the busy workspace.

- Measures pH, mV, relative mV, and temperature
- Automatic temperature compensation (ATC)
- Non-skid pads hold meter steady during operation
- Large dual LCD display
- Integral electrode holder
- Hold function and stability indicator
- Supplied with electrode and arm



Code	Dims, w x d x h, mm	List Price, €	Offer Price, €
B2B9376	155 x 175 x 69	700.70	448.50

Mettler Toledo FiveEasy™ Benchtop pH/mV Meters

1 YEAR



Ideally suited for applications in the laboratory, the FiveEasy™ and FiveEasy™ Plus benchtop instruments provide high quality pH/mV measurements with the simple click of a button. Compact in design, and featuring various data export opportunities, the FiveEasy™ series instruments are the perfect companion to get reliable measurement data, all at a reasonable price.

- Large, well-structured display with intuitive button arrangement and simple menu
- Compact design saves space
- FiveEasy™ Plus meters allow data to be exported either directly to a printer or a PC
- Electrode arm sold separately



These items may incur an additional delivery charge

Code	Description	List Price, €	Offer Price, €
B2B9180	FiveEasy F20 pH/mV meter only	565.50	396.50
B2B7234	FiveEasy F20 pH/mV standard kit with LE438 sensor	715.00	500.50
B2B9182	FiveEasy Plus FP20 pH/mV meter only	800.80	560.30
B2B7236	FiveEasy Plus FP20 pH/mV meter standard kit with LE438 sensor	910.00	637.00
B2B7238	FiveEasy Plus FP20 pH/mV meter bio kit with LE410 sensor	999.70	699.40
B2B7240	FiveEasy Plus FP20 pH/mV micro kit with LE422 sensor	997.10	698.10
B2B7242	FiveEasy Plus FP20 pH/mV Tris kit with LE420 sensor	978.90	685.10

SLS Lab Basics Hotplate Stirrer, 280°C



Stainless steel stirrer with a ceramic coated hotplate which resists corrosion. Features a digital control system, ideal for use in physics, chemistry and biotech labs.

- Heating temperature up to 280°C
- LED display shows temperature and speed
- 50°C HOT warning indicates residual hotplate temperature
- ABS chemical resistant casing
- Includes **FREE** external temperature sensor PT1000 and support clamp

54%
OFF



Code	Stirring Capacity, L	Speed Range, RPM	Max Temp, °C	Plate Ø, mm	List Price, €	Offer Price, €
B2B06238	3	100 - 1500	280	135	564.20	260.00

SLS Lab Basics Hotplate Stirrer, 340°C



Stirrer hotplate with ceramic coated stainless steel plate, widely used in chemical synthesis, physical and chemical analysis, bio-tech labs.

- Simple running interface easy to use and program, automatically identifies temperature sensor PT1000 and transfers to PT1000 operation mode
- LCD display shows target and actual temperatures, as well as set and actual speed
- Brushless DC motor - maintenance free and explosion-proof
- Fully closed assembly guarantees safety and long service life, effectively prevents the liquid damage
- HOT warning indicates residual hotplate temperature
- Includes **FREE** external temperature sensor PT1000 and support clamp

55%
OFF



Code	Stirring Capacity, L	Speed Range, RPM	Max Temp, °C	Plate Ø, mm	List Price, €	Offer Price, €
B2B06240	20	100 - 1500	340	135	982.80	442.00

Grant QBD2 Block Heater

3
YEARS

grant

A versatile general purpose system with removable/interchangeable blocks and a comprehensive specification to suit most dry block heating applications. Range of convenient features includes alarms, single and dual point calibration, programmed start/stop, and 'offset' for known sample temperature variation.

Supplied with
FREE heater block
- specify when
ordering

15%
OFF



- Digital temperature control for optimal precision
- Includes block removal tool for easy and safe removal of blocks
- Stability/uniformity: $\pm 0.1^{\circ}\text{C}$ @ 37°C

Code	Temp Range, $^{\circ}\text{C}$	No. Block Positions	Dims, w x d x h, mm	List Price, €	Offer Price, €
B2B06434	Ambient +5 to 130	2	200 x 285 x 120	1034.80	880.10

Heater Blocks

Choose 1 of the below blocks for **FREE** when you buy a QBD2 Block Heater.

Code	Alt Ref	Description
B2B06438	QB-10	24 x 10mm tubes
B2B06440	QB-12	24 x 12mm tubes
B2B06442	QB-13	12 x 13mm tubes
B2B06444	QB-16	12 x 16mm tubes
B2B06446	QB-18	12 x 18mm tubes
B2B06448	QB-24	5 x 24mm tubes
B2B06450	QB-H	56 x 0.2mL tubes
B2B06452	QB-E0	24 x 0.5mL tubes
B2B06454	QB-E1	24 x 1.5mL tubes
B2B06456	QB-E2	24 x 2mL tubes
B2B06458	QB-50	4 x 50mL tubes

SLS Flowgen Digital Dry Baths

2 YEARS



Digital dry baths with accurate “set and walk away” digital temperature selection, eliminating the need for external thermometers and repetitive “fine tuning” of a temperature control knob. Simply enter the desired temperature on the digital touchpad and the dry bath provides accurate temperature with real time monitoring that continuously maintains the selected temperature.

- Assorted blocks for a wide variety of tube sizes sold separately
- see SLS website for full list of accessories
- Include an easy to use block lifter with a temperature insulated handle
- Built-in user re-calibration function, to guarantee long term temperature accuracy
- Temperature range: ambient +5 to 150°C
- Temperature accuracy: $\pm 0.2^{\circ}\text{C}$, increments: 0.1°C , uniformity: $\pm 0.2^{\circ}\text{C}$
- Digital timer is built into the touchpad display (1 to 999 minutes)

45% OFF



Code	No. Block Positions	Dims, w x d x h, mm	List Price, €	Offer Price, €
B2B7088	1	200 x 230 x 80	809.90	445.90
B2B7090	2	220 x 260 x 80	1011.40	556.40

Benchmark MultiTherm™ Shaker

2 YEARS



A temperature controlled vortexer, useful for a variety of molecular biology applications. Despite its modest footprint, all popular tubes and plates are compatible, including as many as 6 x 50mL tubes. Speed, time and temperature settings are continuously visible on the LCD, simultaneously showing both actual and selected values. Integral over-temperature control ensures long life, safety and sample integrity.

- Temperature control from ambient +5 to 100°C, in 0.1°C increments
- Heating rate $5^{\circ}\text{C}/\text{sec}$
- Variable speed in 10RPM increments
- Exchangeable blocks, for tube sizes 0.2 to 50mL
- Precision contoured wells for uniform thermal transfer
- Blocks sold separately

35% OFF



Code	Dims, w x d x h, mm	List Price, €	Offer Price, €
B2B9022	210 x 290 x 210	3363.10	2186.60

SLS Lab Pro Safevac Aspiration System

2 YEARS



- Designed for laboratory waste recovery and separation of liquid and solid
- Vacuum power can be set to different levels to achieve 1 - 15mL/s aspirating speed
- Sensitive level sensor to prevent liquid overflow during operation
- Waste bottle, tubing and handle are fully autoclavable
- Wide range of adapters to fit tubes and microplates

57% OFF



Code	Vacuum Range, mbar	Vacuum Speed, mL/S	Volume, L	Dims, w x d x h, mm	List Price, €	Offer Price, €
B2B06242	0 - 600	1 - 15	4	180 x 240 x 450	2047.50	877.50

LSG Foetal Bovine Serum (FBS)



LSG Foetal Bovine Serum (FBS)

- Sterile filtered
- Supplied in packs of 500mL
- Subject to dry ice and delivery charges

30% OFF

Code	Description	List Price, €	Offer Price, €
SLS1108	EU grade origin: Brazil	390.00	273.00
SLS1150	EU grade origin: Brazil, heat inactivated	449.80	314.60



SLS Select Lens Cleaning Tissue

Ideal solution for cleaning lenses and other optical surfaces made from glass, quartz or plastic. **Supplied in packs of 50**

Code	Dims, mm	Offer Price, €
B2B06248	80 x 100	7.80

SLS Lab Basics Tablet Microscope Camera



Tablet camera designed for microscopy applications with a high-definition 9.7" colour LCD touchscreen. Equipped with software that allows the user to preview an image, set the white balance, capture images and videos as well as having measurement and annotation capabilities.

- Crystal display, RK3066 dual-core 1.5Hz CPU
- Touch-screen operation, can be used as a small computer
- Includes Wi-Fi and Bluetooth wireless networking for easy file, HDMI output
- Supplied with **FREE** C-mount adapter for SLS Lab Basics Inverso microscopes when camera purchased with microscope, worth €231!
- Not suitable for fluorescence work

57% OFF



Code	Camera	List Price, €	Offer Price, €
B2B06420	15fps at 1024 x 768; 1/2.5 (4:3) 5mpx CMOS	1957.80	845.00

SLS Lab Basics Inverso TC100 Inverted Microscopes

1
YEAR



Ideal for the typical working laboratory and is built to a high-quality specification. It is robust enough to withstand the rigours of constant daily use and with a quintuple position nose-piece fitted as standard, it is ideally suited for multiple observation techniques and/or magnifications.

- Trinocular head inclined at 45°
- Eyepieces: 10/20mm wide field
- Objectives: 4X, 40X plan-achromatic LWD/10X, 20X, 40X Phase Contrast
- Condenser: NA 0.3 (removable), working distance 72mm
- Stage: 160 x 250mm with additional mechanical stage (2 interchangeable stage plates) stage extending board
- Focusing: coaxial coarse and fine
- Illumination: 3W LED
- Epi fluorescence module adds blue excitation (460-490nm) and green excitation (480-550nm)

UP TO
48%
OFF

Code	Description	List Price, €	Offer Price, €
B2B06416	With mechanical stage LED	5010.20	2600.00
B2B06418	With epi fluorescence module	15151.50	9100.00



SLS Lab Basics Compact Precision Balances

5 YEARS

LAB BASICS



UP TO
55%
OFF

- Accurate, high quality, attractive, and stackable units
- Perfect for applications where portability or easy storage are paramount
- External calibration
- Supports multiple weighing units like counting, % weighing
- Hygienic and rustproof stainless steel pan
- Security slot at the back for wire-locking to prevent theft
- Power supply: AC adaptor or 4 AA size dry batteries (batteries not included)



Code	Capacity, g	Readability, g	List Price, €	Offer Price, €
B2B06024	310	0.01	392.60	206.70
B2B06026	3100	0.1	458.90	206.70

SLS Lab Pro P-Series Precision Balances

5 YEARS

LAB PRO

UP TO
50%
OFF

- One touch automatic calibration
- Compact, B5 size footprint
- Fast, 1 second stabilisation
- Large bright vacuum fluorescent display
- Shock absorber function
- Multiple weighing units
- GLP/GMP/GCP/ISO compliant
- Statistical calculation function
- ACAI – Automatic Counting Accuracy Improvement
- Dims, w x d x h:
193 x 262.5 x 85.5mm



Code	Capacity, g	Readability, g	Plate Ø, mm	List Price, €	Offer Price, €
B2B06114	122	0.001	130	1024.40	512.20
B2B06116	220	0.001	130	1136.20	681.20
B2B06254	320	0.001	130	1427.40	713.70
B2B06118	520	0.001	130	1615.90	969.80
B2B06120	1220	0.01	150	1024.40	614.90
B2B06122	2200	0.01	150	1097.20	657.80
B2B06256	3200	0.01	150	1427.40	713.70
B2B06290	5200	0.01	150	1527.50	916.50

SLS Lab Pro A-Series Analytical Balances

5 YEARS

LAB PRO



45% OFF

- Compact footprint
- Breeze break with rotary doors that slide behind the balance and can be removed with one touch
- Ideal for applications where space is at a premium
- Reverse backlit LCD display for easy to read weighing results
- Statistical calculation function eliminates the need for a stats printer
- Standard RS-232C
- Fast, compact SHS sensor, response time ~2 seconds



Code	Capacity, g	Readability, mg	Calibration	List Price, €	Offer Price, €
B2B06106	102	0.1	External	1290.90	709.80
B2B06250	102	0.1	Internal	1656.20	911.30
B2B06108	152	0.1	External	1579.50	868.40
B2B06110	152	0.1	Internal	1938.30	1066.00
B2B06112	252	0.1	External	1799.20	989.30
B2B06252	252	0.1	Internal	2219.10	1220.70



Laboratory Equipment



Do more with OHAUS

From stirrers to shakers, centrifuges to dry block heaters and lifts to clamps, the OHAUS portfolio is filled with products perfect for life science applications, giving you countless opportunities to maximise your reach in your customer's laboratories.

Don't limit yourself to just measurement – **Do More!**

Ingeniously Practical

OHAUS Scout® SKX Portable Precision Balances

2
YEARS



Portable precision balances with large backlit LCD. Built to endure demanding applications with superior overload protection. Features including faster stabilisation time, increased capacity, multiple connectivity options and stackable design make Scout the best weighing experience.

- Integrated overload protection system rated at ten times the capacity
- Large backlit display improves readability in low light conditions
- High-strength stainless steel pan and an impact-resistant plastic pan support
- 4 clearly marked buttons remove complexity, and guide you quickly and easily
- Ingenious draftshield (0.001g model only) was designed with an easy to remove top cover piece



UP TO
24%
OFF

Code	Capacity, g	Readability, g	Platform Dims, mm	List Price, €	Offer Price, €
B2B7212	120	0.001	Ø 93	435.50	344.50
B2B7214	220	0.01	Ø 120	270.40	214.50
B2B7216	420	0.01	Ø 120	343.20	260.00
B2B7218	620	0.01	Ø 120	339.30	273.00
B2B7220	1200	0.01	170 x 140	414.70	331.50
B2B7222	2200	0.01	170 x 140	500.50	403.00
B2B7224	420	0.1	Ø 120	182.00	149.50
B2B7226	620	0.1	170 x 140	214.50	169.00
B2B7228	2200	0.1	170 x 140	286.00	227.50
B2B7230	6200	0.1	170 x 140	374.40	299.00
B2B7232	8200	1	170 x 140	234.00	188.50

SLS Flowgen Incu-Shaker™ Incubated Shaker

2
YEARS



Compact shaking incubator with a remarkably small footprint. Accepts several platforms and a variety of flasks, tubes and other common vessels. The standard platform (included) features a non-slip, rubber coated surface, ideal for tissue culture flasks, Petri dishes and staining trays.

- Extremely compact, just 280mm wide
- Touch screen control over time, speed and temperature
- Horizontally circular 19mm orbit for aeration & mixing
- Instantly exchange flask clamps with MAGic Clamp™ accessories
- Program STEP feature for linking consecutive programs

50%
OFF



Code	Temp Range, °C	Speed Range, RPM	Orbit, mm	Dims, w x d x h, mm	List Price, €	Offer Price, €
B2B7084	Ambient +5 - 70	30 - 300	19	280 x 480 x 330	5746.00	2860.00

SLS Lab Pro BeadBug Microtube Homogeniser

2
YEARS



High energy benchtop homogeniser that sets the performance standard for personal sized cell disruption and lysis instruments. The optimised mixing motion causes rapid cell disruption through constant high velocity impact from the hardened micro-beads chosen specifically for your sample type. Developed for samples too tough to be homogenized in a common lab vortexer, the BeadBug™ provides a convenient and economical alternative to the traditional, high capacity homogenisers on the market today.

45%
OFF

- Extremely powerful mixing for lysis, grinding or homogenisation
- Faster and more effective than tissue grinders
- Homogenise up to 3 samples in disposable 2mL screw cap microtubes
- Extremely compact
- Eliminates the cross contamination



Code	Speed Range, RPM	Capacity	Dims, w x d x h, mm	List Price, €	Offer Price, €
B2B7094	2800 - 4000	3 x 2mL	170 x 210 x 135	1569.10	863.20

SLS Lab Pro Type 2 and 3 Water Purification Systems

1
YEAR



SLS Lab Pro water purification system available in two water quality versions:

Type 3 – Primary grade water (reverse osmosis) suitable for glass washers, autoclave feed, stability chambers and steam/humidity generators.

Type 2 – General laboratory grade water (deionisation) for buffer, reagent and media preparation, sample dilution, general chemistry and teaching applications.

- Low cost, one box solution
- Wall or bench mounted
- 50% recovery rate keeps water costs to a minimum
- Energy consumption <60W
- Unique disposable RO maintains peak efficiency
- Consumables changed in seconds
- Built-in 35L reservoir
- Minimal water wastage
- Mercury free UV

Installation
service available -
please enquire

UP TO
40%
OFF



Code	Model	Make Up Rate, L/hr	List Price, €	Offer Price, €
B2B7316	Choice 10 type 2 (DI)	10	6312.80	3788.20
B2B7074	Choice 10 type 2 (DI) UV	10	6752.20	4050.80
B2B7072	Choice 10 type 3 (RO)	10	5453.50	3272.10
B2B7314	Choice 10 type 3 (RO) UV	10	6228.30	3737.50
B2B06262	Choice 20 type 2 (DI)	20	6350.50	4127.50
B2B06264	Choice 20 type 2 (DI) UV	20	7486.70	4491.50
B2B06258	Choice 20 type 3 (RO)	20	6201.00	3844.10
B2B06260	Choice 20 type 3 (RO) UV	20	6752.20	4050.80

Benchmark BioClave™ Mini Research Autoclave

2 YEARS

Benchmark Scientific

Despite the space-saving exterior dimensions, the stainless steel chambers are surprisingly large, accommodating a variety of liquids, media, instruments, glassware, plasticware and other common research laboratory items. Benchtop models include a mechanical and electrical safety interlock that prevents the door from being opened until the pressure has reached zero PSI. With a large digital display and fully automatic operation, all segments of the cycle (fill, sterilise, exhaust and dry) commence and run to completion by simply pressing the start button. An optional thermal mini-printer is also available for providing a record of sterilisation parameters and a USB drive can be used to record settings and transfer them to a PC.

35% OFF

- Fully automatic, just press start
- Adjustable sterilisation times
- Extremely compact
- Built in water tank, does not require connection to an external water supply



Code	Capacity, L	Dims, w x d x h, mm	List Price, €	Offer Price, €
B2B9026	8	510 x 340 x 330	6918.60	4496.70

SLS Lab Pro Analogue Ultrasonic Baths

3 YEARS

SLS LAB PRO

With capacities from 1.5L to 25L, the SLS Lab Pro analogue ultrasonic baths offer simple analogue timer and temperature controls, providing entry level ultrasonic baths ideal for cleaning small items for use in a wide range of applications. Supplied with a stainless steel basket and plastic lid. B2B8280 has a non-adjustable heater element.

- Ambient to 70°C temperature control on heated models
- 0 – 15 minute timer
- Compact and user friendly

25% OFF



Code	Capacity, L	Heated	Overall Dims, w x d x h, mm	Int Dims, w x d x h, mm	List Price, €	Offer Price, €
B2B8278	1.5	No	180 x 160 x 190	150 x 140 x 100	447.20	335.40
B2B8280	1.5	Yes	180 x 160 x 190	150 x 140 x 100	522.60	392.60
B2B8282	2.5	No	270 x 170 x 210	240 x 140 x 100	572.00	429.00
B2B8284	2.5	Yes	270 x 170 x 210	240 x 140 x 100	661.70	496.60
B2B8286	4.5	Yes	330 x 180 x 275	300 x 150 x 150	1175.20	881.40
B2B8288	13	Yes	375 x 345 x 275	330 x 300 x 150	1487.20	1115.40
B2B8290	25	Yes	550 x 345 x 365	500 x 300 x 200	2003.30	1502.80

SLS Lab Pro Digital Ultrasonic Baths

3 YEARS



With capacities from 4.5 to 25L, the SLS Lab Pro digital ultrasonic baths offer precise and accurate process control of time, temperature and ultrasonic power through the LCD control panel. Incorporating frequency LEAP technology for homogeneous, repeatable ultrasonic activity throughout the tank. The SD card port means that each cycle can be validated for full process traceability via transfer to computer and provided software. Supplied with a stainless steel basket and plastic lid.

25% OFF

- Ambient to 70°C temperature control
- 0 – 99 minute timer
- Degas mode
- Energy saving mode
- Consistent cleaning results every time



Code	Capacity, L	Overall Dims, w x d x h, mm	Int Dims, w x d x h, mm	List Price, €	Offer Price, €
B2B8292	4.5	345 x 200 x 265	300 x 150 x 150	1556.10	1167.40
B2B8294	9.5	550 x 185 x 265	500 x 140 x 150	1933.10	1449.50
B2B8296	12.5	345 x 285 x 365	295 x 245 x 200	2220.40	1665.30
B2B8298	13	375 x 345 x 265	330 x 300 x 150	2238.60	1679.60
B2B8300	17.5	375 x 345 x 365	330 x 300 x 200	2251.60	1688.70
B2B8302	25	550 x 345 x 365	500 x 300 x 200	2646.80	1985.10

SLS Lab Pro Shaking Water Bath

3 YEARS



Shaking water bath, featuring precision PID temperature control with an option to enable a run back timer. The controls allow observation of set and actual temperature simultaneously. A broad range of accessory flask clips and racks ensures flexibility for routine and specialised work. The heating footprint provides rapid energy transfer, resulting in quicker heat up times and a reduction in energy consumption and improved temperature uniformity.

18% OFF

- Painted surfaces feature anti-bacterial finish
- Bold LED display of measured temperatures in real-time and in increments of $\pm 0.1^{\circ}\text{C}$, using a precision PID temperature controller
- Easy to use controls, utilising touch keypads for setting temperature and time value
- Temperature alarms to protect your work
- Shaking speed control is by analogue dial
- Stroke length is variable up to 40mm
- Shaking system is quiet in use
- Supplied with polycarbonate lid



Code	Capacity, L	Temp Range, °C	Shaking Speed, RPM	Dims, w x d x h, mm	List Price, €	Offer Price, €
B2B9374	28	Ambient +5 to 100	0 to 200	715 x 332 x 290	2587.00	2121.60

SLS Lab Pro Water Baths



Digital water baths providing a stable temperature environment with digital PID temperature control for precision with an LED display. Controls feature auto alarm settings, illuminated on/off switch, heater and over temperature indications.

- Temperature range: ambient +5 to 99°C
- Over temperature alarm with heater cut off
- Touch pad controls with easy wipe surface
- Painted surfaces feature antibacterial protection, immersed components are corrosion resistant
- Free additional year warranty (4 years total)

Unstirred

- Sensitivity: $\pm 0.2^{\circ}\text{C}$, uniformity: $\pm 0.1^{\circ}\text{C}$
- Supplied with clear, polycarbonate lid



Code	Capacity, L	Ext Dims, w x d x h, mm	Int Dims, w x d x h, mm	Drain Outlet	List Price, €	Offer Price, €
B2B7076	2	332 x 185 x 135	300 x 150 x 65	No	683.80	513.50
B2B06266	4	332 x 185 x 290	300 x 150 x 150	No	741.00	556.40
B2B06268	14	361 x 332 x 290	325 x 300 x 150	No	903.50	587.60
B2B06270	22	538 x 322 x 290	500 x 300 x 150	Yes	989.30	742.30
B2B7078	28	538 x 332 x 290	500 x 300 x 200	Yes	1144.00	858.00

Stirred



- Sensitivity: $\pm 0.05^{\circ}\text{C}$, uniformity: $\pm 0.01^{\circ}\text{C}$
- Robust thermostirrer constructed from stainless steel for durability
- Low water level is indicated and heating is automatically suspended with an automatic restart when the bath is filled
- Can be set for water temperature or a combination of temperature and time
- Timer programmable to commence once a preset temperature is reached and setting retained once unit is turned off



Code	Capacity, L	Ext Dims, w x d x h, mm	Int Dims, w x d x h, mm	List Price, €	Offer Price, €
B2B06272	8	271 x 332 x 170	129 x 300 x 150	1293.50	1034.80
B2B06274	14	361 x 332 x 170	219 x 298 x 150	1307.80	1046.50
B2B06276	22	537 x 332 x 170	395 x 298 x 150	1378.00	1102.40

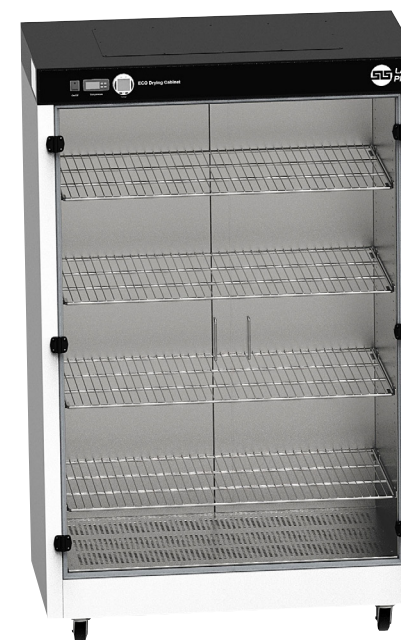
SLS Lab Pro Insulated Eco Drying Cabinets

2
YEARS



SLS Lab Pro eco drying cabinets are designed with energy efficiency in mind, utilising thermal insulation and a user programmable digital control, for drying laboratory glassware, surgical instruments or media.

- Energy saving thermal insulation to 5 sides
- Low power consumption
- Easy accessible control system
- Digital temperature controller
- Digital 7 day 24hr timer
- Economical to run / lower running costs
- Dual circulating fans and easy roll mounting wheels on floor standing units
- Corrosion free stainless steel internal chamber
- Anti-microbial powder coat paint to external surfaces
- Temperature range of 30 to 80°C



These items may incur an additional delivery charge

Code	Type	Capacity, L	Airflow	Door Style	Dims, w x d x h, mm	Energy Consumption, kWh/24hr*	List Price, €	Offer Price, €
B2B06326	Bench	113	Static	Sliding	765 x 450 x 732	6.840	2893.80	2171.00
B2B06324	Bench	227	Static	Sliding	1000 x 550 x 807	7.968	3044.60	2436.20
B2B06328	Floor standing	426	Fan-assisted	Hinged	635 x 650 x 1870	13.920	7237.10	4342.00
B2B06330	Floor standing	885	Fan-assisted	Hinged	1168 x 650 x 1870	18.960	9750.00	5850.00

*at 70°C setpoint

SLS Lab Pro S500 Mini Recirculating Chiller

2 YEARS



With a sophisticated touchscreen controller and 500W cooling power the S500 Mini is ideal for many laboratory applications. Built to save space, the Mini is about the size of the average desktop PC.

- A touchscreen interface
- Universal 90-260 VAC input voltage and 50/60Hz input frequency suitable for use all over the world
- Variable speed compressor and fan
- Whisper quiet
- Continual adjustment of refrigerant mass flow rate to control duty
- Water system constructed from 12mm push fit fittings
- USB port for downloading system data

36% OFF



Code	Temp Range, °C	Cooling Capacity, kW	Flow Rate, L/min	List Price, €	Offer Price, €
B2B06404	-10 to +60	0.5	3.5	6084.00	3893.50

Grant ecocool Recirculating Baths

3 YEARS



Innovative, eco-friendly, refrigerated heated circulating baths offering significant running cost savings whilst delivering powerful cooling. Consisting of two models, the ecocool range is supplied assembled as ready to use kits, complete with accessory hosing, clips and connectors as standard.

- Active cooling through the whole temperature range
- True energy saving of up to 80% against standard compressor units
- Thermostat and chiller work in harmony, neither will operate alone, eliminating any danger of overheating or freezing
- Single front switch for user convenience

25% OFF



These items may incur an additional delivery charge

Code	Alt Ref	Temp Range, °C	Dims, w x d x h, mm	List Price, €	Offer Price, €
B2B9106	ecocool 100R	-20 to 100	245 x 430 x 640	4631.90	3473.60
B2B9108	ecocool 150R	-30 to 150	240 x 550 x 640	5349.50	4011.80

JULABO FT Immersion Coolers



Julabo



JULABO immersion coolers with probe are primarily used for counter-cooling when connected to a heating circulator, or for rapidly cooling fluids down to low temperatures. The easy-to-use units are suitable for a variety of cooling applications and represent an economical and space saving alternative to conventional tap water cooling.

- Rapid cooling of liquids down to low temperatures
- Counter-cooling of liquids in combination with heating circulators
- Preventing the use of precious tap water for cooling
- Compact design, small footprint and ease of operation
- Dry ice substitution



Code	Model	Temp Range, °C	Dims, w x d x h, mm	List Price, €	Offer Price, €
B2B9316	FT200	-20 to +30	380 x 550 x 600	3790.80	3032.90
B2B9318	FT400	-40 to +30	200 x 300 x 430	5540.60	4433.00
B2B9320	FT900	-90 to +30	380 x 550 x 600	11229.40	8422.70

JULABO CORIO Refrigerated/Heating Circulators



Julabo



Refrigerated/heating circulators of the CORIO series distinguish themselves with a great price-to-performance ratio. They are ideal for all standard tasks and routine work in laboratories and industry. The CORIO CP range are suitable for applications with a temperature range up to +200°C. The enhanced pump performance ensures they are suitable for easy temperature control tasks in combination with external applications.

- Bright, white, easy to read display
- Very quiet
- Easy switching between internal and external circulation
- Bath lid and drain tap included
- Space-saving cooling coil design yields more usable space in the bath tank
- Powerful and infinitely adjustable pressure pump (CP model)



Code	Model	Temp Range, °C	Dims, w x d x h, mm	List Price, €	Offer Price, €
B2B9322	CD-200F	-20 to +150	230 x 390 x 650	5258.50	3944.20
B2B9324	CP-200F	-20 to +200	230 x 390 x 650	5929.30	4447.30

SLS Lab Basics Mini Vacuum Pumps

1
YEAR



Single-head, dry-running devices used in a wide range of laboratory applications. They transfer, compress and pump down without contamination.

- 100% oil-free transfer
- PTFE coated version for slightly aggressive or corrosive gases and vapours
- Maintenance-free
- High level of gas tightness
- IP20 motor protection
- Silencer fitted to outlet port
- 6mm hosetail on inlet

UP TO
41%
OFF



Code	Diaphragm Material	Delivery, L/ min	Ultimate Vacuum, mbar	List Price, €	Offer Price, €
B2B06244	EPOM rubber	6	100	452.40	286.00
B2B06246	PTFE coated	5.5	160	533.00	312.00

Welch MPC 090 E Chemical Duty Diaphragm Pump

1
YEAR



The standard equipment of a high accuracy regulator allows for soft start filtration, to prevent damage to the filter membrane, whilst allowing a powerful final vacuum level to be achieved for fast results. A built in catch pot prevents accidental ingestion of liquid into the pump.

- Chemical resistant
- Oil free
- Two heads, one stage
- Ultra quiet operation and long service life

30%
OFF



Code	Flow Rate, L/ min	Ultimate Vacuum, mbar	Dims, w x d x h, mm	List Price, €	Offer Price, €
B2B9326	15	100	144 x 198 x 244	1183.00	828.10

Welch CRVpro2 Vacuum Pump

1
YEAR

WELCH

Provides a reduced risk of chemical attacks and oil breakdown by diluting aggressive chemicals with a larger oil chamber. Its cool running characteristic also reduces corrosion whilst a chemical resistant coating protects the stationary components. The CRVpro enables extended oil change intervals for less maintenance costs: less oil consumption is a result of the cool operation and the extended usability of oil.

- Coated oil case to slow metal corrosion
- DN 16 KF inlet/exhaust flanges
- Anti-suck back valve
- Low noise level
- Forced oil lubrication
- Gas ballast valve to allow pumping of condensable vapours
- Supplied with Welch Directorr™ premium oil, centering rings, clamps and motor overload protection



25%
OFF

Code	Flow Rate, L/min	Ultimate Vacuum, mbar	Dims, w x d x h, mm	List Price, €	Offer Price, €
B2B9328	42	3 x 10 ⁻³	138 x 384 x 211	2425.80	1820.00

Spex® Jenway® 7200 Series Spectrophotometers

2
YEARS

spex
jenway

The 72 series spectrophotometers offer measurement modes for single wavelength with basic absorbance and % transmittance; concentration calculated using a standard or a factor; optical density; quantitation with the ability to create a calibration curve using up to 6 standards and 3 replicates; full spectrum scanning and kinetics where up to 3 wavelengths can be measured simultaneously. Leverage diode array technology to produce exceptionally fast results.

- Colour touchscreen user interface with 4" display
- Large sample chamber
- Sample chamber lid can also be left open during measurements which is ideal for samples in tall test tubes
- Small footprint and lightweight
- Fast scan speed
- Multiple USB ports for data storage and printer connectivity
- Absorbance: -0.3 to 2.5A
- Wavelength accuracy/ reproducibility: ±2.0nm



20%
OFF

Code	Light Source	Wavelength Range, nm	Dims, w x d x h, mm	List Price, €	Offer Price, €
B2B9344	Tungsten-Halogen	335 to 800	212 x 422 x 120	2627.30	2102.10

Essentials for the Education Laboratory



Benchtop Microscopes



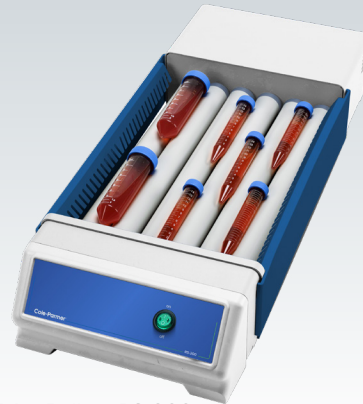
Melting Point MP-100



Digital Water Bath WB-300



Melting Point MP-200



Tube Rollers RS-200



Water Still WS-100

The Cole-Parmer® range (formerly Stuart® branded) offers accurate and user-friendly laboratory products, including hot plates, rotators, rollers, rockers, melting point apparatus, water stills, incubators for high-quality performance, and great value across your workflows.

Robust and reliable, the range is ideal for teaching labs and inexperienced users. Additionally, the built-in Biocote® protection – a silver ion treatment that prevents microbial growth on the surface of your equipment; reduces cross-contamination, while enhancing hygiene and GLP compliance.

Jenway® stuart® electrothermal® 

Cole-Parmer®

PCRmax Alpha Cyclers

2 YEARS

PCR^{max}

Compact and feature driven entry level PCR machines with ease of use and performance at their core. Available with 1 96-well block chassis, the Alpha Cyclers interface is Android based, with a large HD touchscreen for responsive control of the software. Ideal for multi user environments, users can make any USB device their own login key allowing them to use multiple systems in different locations like a personal unit. Programs can be easily stored, transferred, protected and locked while running.

- Remote monitoring can be set to check system performance every run and notify end user of performance impacting abnormality
- Active sample cooling for sharper amplification and minimal non-specific amplification
- Program wizard to generate a protocol specific to your sequence, template source and amplicon length in seconds or optimise your protocol
- Report generated on run conditions and state following completion of protocol
- Gradient function – allowing for simplified temperature optimisation, no matter the block chosen

20% OFF



Code	Alt Ref	Supplied with	Dims, w x d x h, mm	List Price, €	Offer Price, €
B2B8030	93945-02	96 well block	260 x 430 x 200	4817.80	3854.50

CoolMed Laboratory Fridges and Freezers

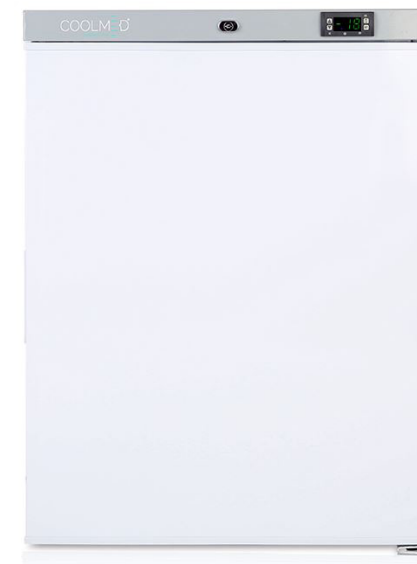
5 YEARS 2 YEARS

COOLMED

- High quality temperature controllers (laboratory models only)
- LED temperature display (laboratory models only)
- Fitted lock and 2 keys
- Flexible storage: multiple shelf locations
- Spark-free
- Annual service & calibration available
- 5 year warranty (laboratory models) or 2 year warranty (basic models)

These items may incur an additional delivery charge

UP TO 20% OFF



Code	Alt Ref	Description	Capacity, L	Dims, w x d x h, mm	List Price, €	Offer Price, €
B2B9038	CMLFZ115	Underbench laboratory freezer	115	598 x 595 x 820	910.00	773.50
B2B9040	CMLFR145	Underbench laboratory refrigerator	145	595 x 595 x 820	781.30	664.30
B2B9046	CMLFF260	Upright laboratory fridge-freezer	260	595 x 595 x 1645	2237.30	1790.10
B2B9044	CEFL98	Basic freezer	98	600 x 610 x 850	533.00	453.70
B2B9042	CELL156	Basic refrigerator	156	600 x 600 x 835	533.00	453.70

Benchmark Industrial 5-Position Digital Hotplate Stirrer

2 YEARS

The Benchmark multi-position stirring hotplates provide simultaneous heating and stirring of multiple samples. The large top-plates feature a durable, chemically resistant, white, ceramic coating that provides exceptionally uniform temperature control up to 120°C. Both mixing speed and temperature are conveniently controlled on the digital display, which also features a safety LED that warns the user when the top plate is hot and unsafe to touch. Each stirring position is driven by an independent motor, providing efficient mixing of sample sizes up to 1000mL.

- Simultaneous heating and stirring
- Effective stirring in bottles up to 1L
- Digital control of both speed and temperature
- Designed to accept a wide range of vessel types, including beakers, Erlenmeyer flasks and media storage bottles



Code	Dims, w x d x h, mm	Speed Range, RPM	Temp Range, °C	List Price, €	Offer Price, €
B2B9024	645 x 135 x 84	150 - 2000	35 - 120	1513.20	1059.50

Lec Essential Laboratory Fridge and Freezer

2 YEARS

- Spark-free interior to reduce risk of ignition
- Lockable door with two keys
- Flexible internal storage



Code	Model	Capacity, L	Temp Range, °C	Dims, w x d x h, mm	List Price, €	Offer Price, €
B2B9164	LSFSR110	158	+2 to +10	595 x 660 x 850	707.20	460.20
B2B9166	LSFSF110	98	-18 to -25	595 x 660 x 850	707.20	460.20

SLS Lab Pro Statebourne Biorack Storage Refrigerators

5
YEARS



In partnership with
STATEBOURNE
cryogenics

25%
OFF

The Biorack series of refrigerators provide highly efficient storage of bulk quantities of cryovials. Racking systems housed within these ultra low loss cryogenic refrigerators enable users to store large quantities of biomedical material over long periods of time, safe in the knowledge that storage temperatures even in the vapour phase, will be below -190°C.

- Advanced super insulation and ultra high vacuum techniques allow storage times between refills of up to 6 months
- Supplied complete with racks and polycarbonate cryoboxes
- Ultra-low evaporative losses
- Compatible with all major cryobox brands
- Heavy duty lockable enclosure offers excellent security
- Liquid or vapour phase option available
- Temperature data logging device available
- Storage of 96 well plates, straws, 5mL tubes, blood bags, canes and cord blood bags

These items may incur an additional delivery charge

Supplied with
FREE roller base
- worth up to
€543!



Code	Model	Supplied with	List Price, €	Offer Price, €
B2B8360	Biorack 750	5 x racks, 30 x 5 x 5 cryoboxes	4080.70	3060.20
B2B8362	Biorack 3000	6 x racks, 30 x 10 x 10 cryoboxes	6204.90	4654.00
B2B8364	Biorack 4800	6 x racks, 48 x 10 x 10 cryoboxes	7763.60	5822.70
B2B8366	Biorack 6000	6 x racks, 60 x 10 x 10 cryoboxes	8335.60	6251.70

SLS Lab Pro Fan Convection Ovens

2 YEARS



Chamber is bright polish stainless steel lagged with high efficiency thermal insulation. Digital temperature control up to 250°C with program feature run back timer. Over temperature auto set and over temperature protection. Single insulated door, lockable with 2 point door engagement for an even seal.

- Door chime when left open
- Temperature range: ambient +5 to 250°C
- PID digital LED display showing actual or set temperature, resolution 0.1°C
- Temperature fluctuation ± 0.4 @ 37°C/ variation ± 1.8 @ 37°C
- Run back timer with indicator and end messaging 00:01 to 99:59 (hh:mm)
- Fan convection from 0% variable to 100% for forced air circulation
- Temperature sensor fail alarm with error reporting
- Perforated stainless steel shelves included with adjustable runners

UP TO
25%
OFF



These items may incur an additional delivery charge

Code	Capacity, L	No. of Shelves	Shelf Positions	Int Dims, w x d x h, mm	Ext Dims, w x d x h, mm	List Price, €	Offer Price, €
B2B8348	60	2	5	400 x 400 x 360	600 x 605 x 720	2819.70	2199.60
B2B8350	110	2	8	400 x 450 x 620	600 x 660 x 980	3692.00	2879.50
B2B8352	250	3	10	600 x 510 x 800	800 x 720 x 1160	4777.50	3582.80

SLS Lab Pro Laboratory Incubators

2 YEARS



Chamber is bright polish stainless steel lagged with high efficiency thermal insulation. Digital temperature control up to 80°C with program feature run back timer. Over temperature auto set and Class 1 over temperature protection. Single insulated door, lockable with 2 point door engagement for an even seal.

- Door chime when left open
- Silicone door seal
- Inner clear polycarbonate door
- Temperature range: ambient +5°C to 80°C
- Temperature fluctuation: ± 0.4 @ 37°C/ variation: ± 0.8 @ 37°C
- Run back timer with indicator and end messaging 00:01 to 99:59 (hh:mm)
- Gravity natural convection
- Temperature sensor fail alarm with error reporting
- Perforated stainless steel shelves included with adjustable runners

- PID digital, LED display showing actual or set temperature, resolution 0.1°C

These items may incur an additional delivery charge

UP TO
25%
OFF



Code	Capacity, L	No. of Shelves	Int Dims, w x d x h, mm	Ext Dims, w x d x h, mm	List Price, €	Offer Price, €
B2B8354	60	2	400 x 400 x 360	600 x 605 x 720	2707.90	2112.50
B2B8356	110	2	400 x 450 x 620	600 x 660 x 980	3455.40	2694.90
B2B8358	250	3	600 x 510 x 800	800 x 720 x 1160	4566.90	3425.50

BACK 2 BASICS 2023

GREAT
OFFERS
INSIDE

- England & Wales: +44 (0)115 982 1111
- Scotland: +44 (0)123 643 1857
- Northern Ireland: +44 (0)28 9262 1100
- Republic of Ireland: +353 (0)1 4069 464
- International: +44 (0)115 977 5060
- East Africa: +254 (0)728 156294



www.scientificlabs.ie

EXCLUSIVE
offers on essentials for your laboratory

