



Scientific Laboratory Supplies (SLS) acquires Sparks Lab Supplies (Sparks) in the Republic of Ireland

Scientific Laboratory Supplies (SLS) the leading supplier of equipment, chemicals and consumables for laboratory use in the UK – are excited to announce the acquisition of Sparks Lab Supplies, expanding its product and service offering in the Republic of Ireland.



Established in 1996, Sparks are a laboratory consumables, reagents and equipment supplier based in Dublin and they are renowned for the personalised service they provide each customer, helping them to achieve optimum value-for-money by providing products and service of the highest quality. SLS has over 30 years of experience supporting the UK scientific sector and, as a trusted strategic trading-partner in the Republic of Ireland, the addition of Sparks aligns with SLS' ongoing strategy to identify acquisitions that focus on delivering unrivalled customer service and support for laboratories across the UK & Ireland.

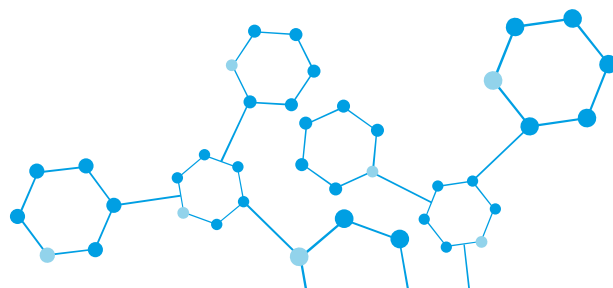
Sparks will continue to trade as Sparks Lab Supplies, retaining all employees and

management, whilst harnessing SLS's business support and infrastructure to add value for all parties, stakeholders and customers. Sparks' customers will get access to several new brands available through the SLS portfolio of products, which boasts over 600,000 individual stock lines from the World's most recognisable brands.

The acquisition provides SLS with Warehousing, Logistics and Customer Support in the Republic of Ireland and also mitigates the impact of Brexit for Irish customers.

Maurice Downing, Managing Director at Sparks said of the deal: "Sparks have always been committed to providing our customers with high-quality products, backed by first-class service and support. This desire aligns us with SLS' vision to be the scientist's supplier of choice. Joining the SLS Group will help us to expand our product portfolio, enhance our capabilities and offer better service to our customers. This is truly a great outcome for all our employees, partners and loyal customers."

Ian Roulstone, Managing Director at SLS, added: "This is a great addition to the SLS family and provides an opportunity for two companies already closely aligned to work together to further improve the service provided for our respective Irish customers. Operating a warehouse in Dublin to complement the SLS warehouse in Lisburn, Northern Ireland



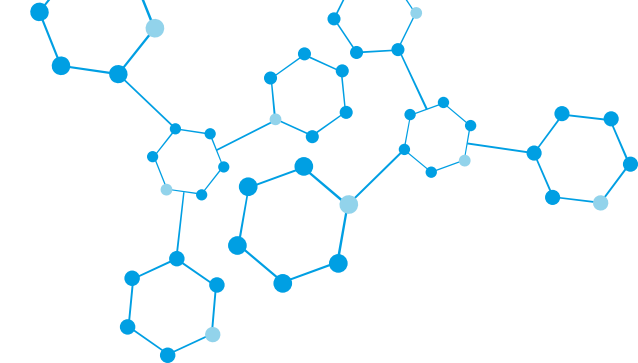
United Kingdom:
slsinfo@scientific-labs.com

International:
slsexport@scientific-labs.com

Northern Ireland:
NI.sales@scientific-labs.com

Republic of Ireland:
ROI.sales@scientific-labs.com





demonstrates our commitment to keep our customers at the centre of our strategy, as well as increasing our product offering and expanding into new markets and geographies.”

This acquisition continues the long-term growth strategy for SLS, which plans further acquisitions and recruitment to broaden its portfolio into a wider geographical area, including the UK, Ireland, East Africa and beyond.

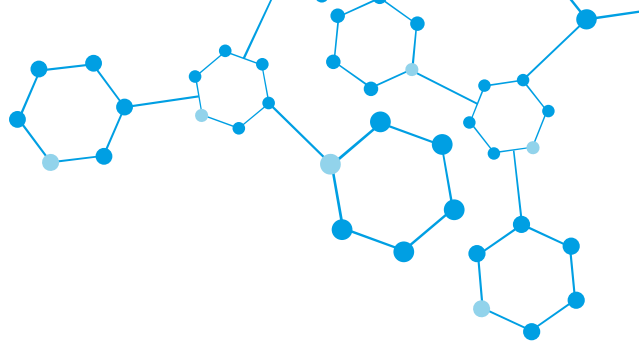
Visit www.scientificlabs.co.uk for more information about the company and its services.

About Scientific Laboratory Supplies Ltd

SLS first began trading in 1991 and has grown to become the UK's largest independent supplier of laboratory equipment, chemicals, and consumables. Headquartered in Nottingham, the company operates a warehousing, technical storage, and logistics service across the UK and in several international territories. SLS works closely with leading international industry brands through a market leading catalogue and an extended range of over 500,000 products.

About Sparks Lab Supplies

Sparks Lab Supplies Ltd was established in 1996 to supply laboratory scientists throughout Ireland, with top quality products, at competitive prices, delivered to the highest quality standards. Since then, Sparks have grown to become one of Ireland's leading suppliers of laboratory equipment, reagents and consumables. From their state-of-the-art distribution centre in



Dublin's Greenogue Business Park, their dedicated team of professionals offers a unique level of customer service and support to scientific and technical customers in every county of Ireland.

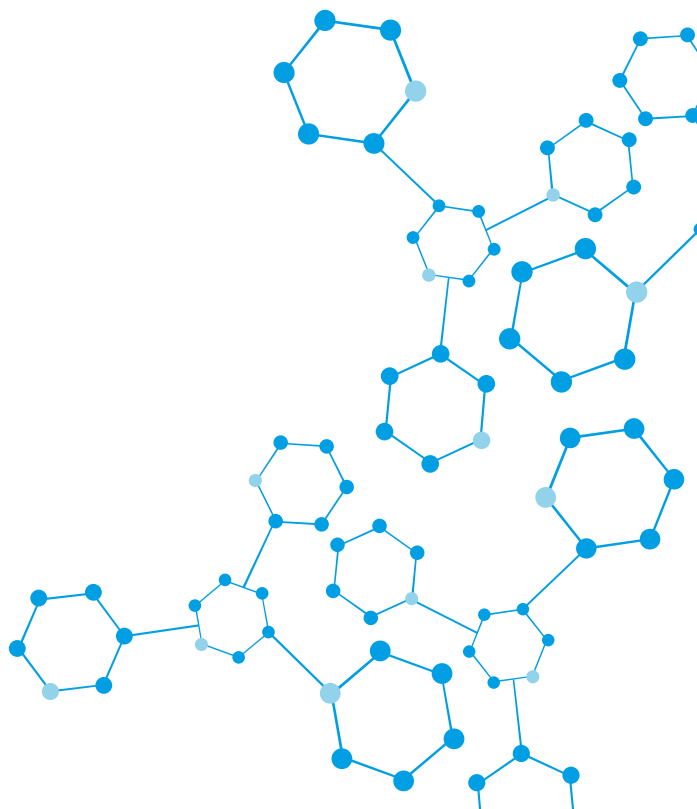
Media Contact

Joshua Chapman

Marketing Director

Scientific Laboratory Supplies (SLS)
Wilford Industrial Estate
Ruddington Lane
Wilford
Nottingham
NG11 7EP

Email : jchapman@scientific-labs.com



United Kingdom:
slsinfo@scientific-labs.com

International:
slsexport@scientific-labs.com

Northern Ireland:
NI.sales@scientific-labs.com

Republic of Ireland:
ROI.sales@scientific-labs.com

