

EXCLUSIVE offers on essentials for your laboratory

BACK **2** BASICS



**26%
OFF**

UP TO
**70%
OFF**

2
0
2
6

VALID
1st Jun - 30th Sept **2026**



**SCIENTIFIC
LABORATORY
SUPPLIES**

WELCOME



Welcome to the 2026 issue of Back 2 Basics, packed with exclusive offers on essentials for your laboratory.

We work closely with a number of our key suppliers to bring you the best deals in the market for selected laboratory products. In this issue, we have fantastic offers on selected lines from our own SLS Lab Pro, SLS Select and SLS Lab Basics brands, alongside those from world renowned manufacturers such as Eppendorf, Azenta, Corning, Gilson, Thermo Scientific, OHAUS, IKA, Portwest and Benchmark.

To benefit from the prices offered in this brochure, please use the appropriate product code when placing your order.

These offers are **EXCLUSIVE** to SLS and valid until: **30th Sept 2026**

PRODUCT SYMBOLS

NEW NEW product

1 YEAR Length of warranty

Made in Britain



SUSTAINABILITY ATTRIBUTES

Raw materials

Manufacturing

Packaging & distribution

Use
For more information on our Sustainability Attributes, please visit:

Disposal

www.scientificlabs.ie/sustainability

Buy One, Get One TREE

Look out for products with the 'Buy One, Get One TREE' icon in our promotions. With every purchase of these products, we will plant a tree on your behalf.

Working in partnership with **Ecologi**



HIGHLIGHTS

Eppendorf MiniSpin®/MiniSpin® plus Mini Centrifuges
See page 3

SLS Select Media Bottles
See page 11

OHAUS Guardian 3000™ Hotplate Stirrer
See page 32

Thermo Scientific™ TSE Series Refrigerators and Freezers
See page 50

SLS Lab Pro Personal Benchtop Autoclaves
See page 16

Gilson PIPETMAN® Pipettes
See page 21

Eppendorf 5804/5804 R Centrifuges

2 YEARS

eppendorf

The 5804 family of benchtop centrifuges is renowned for its quality and reliability. They offer you the most cost-effective solution for medium-throughput applications requiring speeds of up to 20,913 xg (14,000 RPM). Experience true versatility with a broad selection of rotors and adapters.

- High centrifugation speed of up to 20,913 xg (14,000 RPM)
- Centrifuge lid with soft-touch lid closure
- Low access height of 29cm for easy loading and unloading of samples
- Automatic rotor recognition and imbalance detection for maximum operational safety
- 5804 R allows cooling down to -9°C

26% OFF



Code	Model	Supplied with	List Price, €	Offer Price, €
B2B2582	5804	A-4-44 rotor and adapters for 15/50mL conical tubes	5845.00	4325.00
B2B2578	5804 R	A-4-44 rotor and adapters for 15/50mL conical tubes	8907.00	6591.00
B2B2584	5804	S-4-72 rotor and adapters for 15/50mL conical tubes	7025.00	5199.00
B2B2580	5804 R	S-4-72 rotor and adapters for 15/50mL conical tubes	9899.00	7326.00

Eppendorf MiniSpin®/MiniSpin® plus Mini Centrifuges

2 YEARS

eppendorf

Entry level centrifuges that are powerful and easy to use, but small enough so that each workstation can be equipped with a personal centrifuge. Optimal ventilation flow reduces heating and protects temperature sensitive samples, and automatic lid opening at the end of the run to prevent sample warming and to allow easy access to samples.

- Extremely compact footprint
- Acceleration and deceleration time <13s
- User-friendly digital display for time and speed
- Separate short spin key for fast and comfortable centrifugation
- Soft touch lid closure for ergonomic lid locking
- Supplied with rotor which has a capacity of 12 x 1.5/2.0mL tubes



26% OFF



- MiniSpin® plus provides automatic RPM/RCF conversion, and extended timer to 99 min or continuous centrifugation

Code	Description	Max Speed, RPM	Max RCF, x g	Dims, w x d x h, mm	List Price, €	Offer Price, €
B2B4904	MiniSpin®	800 to 13400	12100	225 x 230 x 130	1151.00	852.00
B2B4906	MiniSpin® plus	800 to 14500	14100	225 x 230 x 130	1495.00	1106.00

Eppendorf Research® plus Pipette Starter Packs

3 YEARS

eppendorf

The ultra-light Eppendorf Research® plus pipette meets the highest needs in precision and accuracy, combined with ultimate ergonomics and low tip-ejection forces for stress-free workflow. Autoclavable. Supplied with 1 x pipette pen.

25% OFF

Option 1: 3 pipettes (0.5-10µL, 10-100µL, 100-1000µL), 3 x 96 epT.I.P.S. tips in refill boxes

Option 2: 3 pipettes (2-20µL, 20-200µL, 100-1000µL), 3 x 96 epT.I.P.S. tips in refill boxes

Option 3: 3 pipettes (1000µL, 5mL, 10mL), 1 x 96 epT.I.P.S. tips in refill box, sample bag 5µL, sample bag 10µL



Code	Description	List Price €	Offer Price €
B2B06594	Research® plus option 1	790.00	592.00
B2B06596	Research® plus option 2	771.00	578.00
B2B06598	Research® plus option 3	790.00	592.00

Eppendorf Mastercycler® X50 Thermal Cyclers

2 YEARS

eppendorf

The Eppendorf Mastercycler® X50 is the elegant synthesis of speed, flexibility and PCR optimisation for research PCR applications and standardisation for routine PCR applications such as food testing etc. A highly intuitive touch display, low noise levels, low power consumption, and the versatile flexlid concept complete the product to be a powerful yet discrete tool.



- Innovative 2D-Gradient for advanced PCR optimisation
- Heating rate: up to 10°C/s
- Connect up to 10 units to each other or via network
- Small footprint
- ECO variants without touchscreen require connected X50s/a/h or software to control



26% OFF



Code	Model	Supplied with	List Price, €	Offer Price, €
B2B2586	X50s	96-well silver thermoblock with touchscreen	11546.00	8545.00
B2B2588	X50a	96-well aluminium thermoblock with touchscreen	10909.00	8073.00
B2B2590	X50h	384-well aluminium thermoblock with high pressure lid and touchscreen	11546.00	8545.00
B2B2592	X50i	96-well silver thermoblock without touchscreen	9496.00	7027.00
B2B2594	X50l	96-well aluminium thermoblock without touchscreen	8856.00	6554.00
B2B2596	X50t	384-well aluminium thermoblock with high pressure lid without touchscreen	10141.00	7504.00



NEW! SpinPro® 6 R

Effortless Every Time

Redefine centrifugation with SpinPro® 6 R

Whether you work in a biotech or pharma laboratory and require GxP compliance with a focus on sustainability, SpinPro® 6 R delivers unmatched rotor flexibility, ergonomic ease, and seamless digital integration – providing you with reliable centrifuge so you can Spin like a Pro! Effortless Every Time.

- > Universal rotor concept to spin multiple, vessels and adapters from tubes to plates to bottles
- > CO₂-based cooling with standby functions
- > Automatic lid with one-touch operation
- > Eppendorf QuickLock® Pro rotor lid for one-handed operation and instant rotor recognition
- > User management with touch-free user login
- > Extended documentation features
- > Easy integration in LIMS systems and many more

www.scientificlabs.ie/eppendorf_centrifuge

Eppendorf New Brunswick Innova® 40/40R Benchtop Orbital Shakers

2 YEARS



eppendorf



Do you need a compact benchtop orbital shaker that offers high visibility and quick access to flasks with a volume of up to 3L? The Innova® 40/40R is an easy-to-program orbital shaker that comes with the famous Innova® triple eccentric drive to provide 24/7 reliable operation for decades.

- Check your samples: large, insulated, and scratch-resistant viewing
- Built to perform and last
- Tight temperature and speed control
- Easy interface handling and programming
- Easy to move and small footprint
- Temp range is from 5°C above ambient to 80°C. Refrigerated versions (R) allow 15°C below ambient (min. set point is 4°C)

26% OFF



Code	Model	Orbit Size, mm	List Price, €	Offer Price, €
B2B2604	40	19	14180.00	10493.00
B2B2598	40R	19	16629.00	12305.00
B2B2600	40	25	14180.00	10493.00
B2B2602	40R	25	16629.00	12305.00

Eppendorf CryoCube® ULT Freezers

5 YEARS

eppendorf



The Eppendorf CryoCube® F440/F570 series of ULT freezers is based on a strong compressor for fast recovery to -80°C after opening. These freezers minimise operating costs by low energy consumption per day while providing superior protection for your critical samples.

- 5 compartment layout with 4 shelves and 5 insulated inner doors for easy sample access
- Walls are 130mm thick with polyurethane insulation
- Temperature range from -50 to -86°C
- Reliable heavy-duty compressors (2-stage cascade cooling system)
- Quick pull-down times enable fast re-use after cleaning/defrosting of the instrument

45% OFF



- Hydrocarbon-based cooling liquids (R290/ R170)
- Temperature monitor systems can be used to monitor the freezers remotely

Code	Model	Capacity, L	Dims, w x d x h, mm	List Price, €	Offer Price, €
B2B2606	F440n	440	955 x 898 x 1950	15318.00	8425.00
B2B2608	F570n	570	1103 x 898 x 1950	16629.00	9146.00

SLS Select Centrifuge Tubes

3 YEARS

- Certified RNase and DNase free
- Sterile
- Manufactured from virgin ultra clear polypropylene
- Leak proof flat HDPE cap
- Printed graduations and a large writing area for sample identifications
- Racked tubes are packaged in recyclable card racks

UP TO 84% OFF



Supplied in packs of 500

Code	Description	Volume, mL	Max RCF, x g	List Price, €	Offer Price, €
B2B06192T	Bagged	15	9000	282.00	44.90
B2B06194T	Racked	15	9000	315.00	51.00
B2B06196T	Bagged	50	9500	312.00	54.00
B2B06198T	Racked	50	9500	325.00	67.00
B2B06200T	Skirted, bagged	50	7000	344.00	60.00



Meker Portable Gas Burners



50% OFF

Code	Description	List Price, €	Offer Price, €
B2B06102T	Burner	121.00	61.00
B2B06104T	Cartridge, 240g	22.60	11.28

SLS Lab Pro Laboratory Chairs

3 YEARS

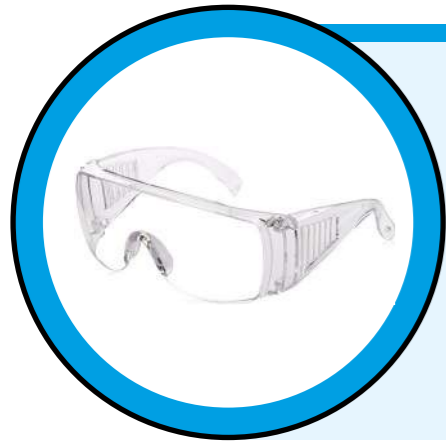
- Ergonomically designed
- Height adjustable backrest and seat
- Soft and comfortable upholstery
- Made from recyclable material
- Safety tested

UP TO 51% OFF



LAB PRO

Code	Description	Height, mm	Material	List Price, €	Offer Price, €
B2B9368T	Low chair on castors	440 to 620	Synthetic leather	346.00	173.00
B2B9370T	High chair on glides	580 to 850	Synthetic leather	413.00	224.00
B2B9372T	Standing rest chair on glides	510 to 780	Integral foam	338.00	167.00
B2B2232T	Stool on castors	460 to 630	Synthetic leather	282.00	150.00



Portwest® PW30 Safety Visitor Glasses

- Moulded-in brow guard and vented side shields for excellent side protection

35% OFF

Code	List Price, €	Offer Price, €
B2B8220	5.55	3.61

Portwest® White Lab Coats

- Stud front for easy access
- Two lower patch pockets and a single chest pocket for ample storage
- Hard wearing durable polycotton twill fabric with excellent dye retention
- Howie coats feature ribbed cuffs and Texpel stain resistant finish
- Garment decoration with logo or embroidery available - please enquire
- More sizes available on our website



PORTWEST



UP TO 42% OFF

Code	Size	Style	List Price, €	Offer Price, €
B2B8188	X small	Standard	31.50	23.70
B2B8190	Small	Standard	31.50	23.70
B2B8192	Medium	Standard	31.50	23.70
B2B8194	Large	Standard	31.50	23.70
B2B8196	X large	Standard	31.50	23.70
B2B2128	X small	Howie	38.00	22.80
B2B2130	Small	Howie	38.00	22.80
B2B2132	Medium	Howie	38.00	22.80
B2B2134	Large	Howie	38.00	22.80
B2B2136	X large	Howie	38.00	22.80



Portwest® PW17 Curved Safety Glasses

- Lightweight and comfortable

15% OFF

Code	List Price, €	Offer Price, €
B2B1000	4.89	4.15



GASARC Gas Cylinder Regulators

GASARC
AN ESAB BRAND

UP TO 54% OFF

Code	Model	For use with	Inlet	Outlet	List Price, €	Offer Price, €
B2B06828	Tech Master	CO ₂	BS341 No.3	G3/8 BSP R/H brass male	315.00	155.00
B2B06830	Tech Master	Inert gases/oxygen	BS341 No.8	G3/8 BSP R/H brass male	338.00	155.00
B2B2684	Lab Master	Inert gases/oxygen	BS341 No.8	1/4 NPT female	843.00	388.00
B2B2686	Chem Master	Inert gases/oxygen	BS341 No.8	No outlet	744.00	542.00

Swann-Morton Qlicksmart BladeFLASK Scalpel Blade Remover

A safe, quick and easy single-handed method for scalpel blade removal. The puncture proof sharps container shuts off automatically when it is full, and can be disposed of safely. Suitable for wall or surface mounting using the purpose designed bracket.

50% OFF



Code	Description	List Price, €	Offer Price, €
B2B06042T	BladeFLASK scalpel blade remover	53.00	39.60
B2B06044T	Mounting bracket	14.36	7.19



Gratnells Storage Trays

5 YEARS



50% OFF

Handy trays with robust polypropylene construction.

Code	Description	Colour	Dims, l x w x h, mm	List Price, €	Offer Price, €
B2B06082T	F1 shallow	Royal blue	427 x 312 x 75	15.87	7.94
B2B06084T	F1 shallow	Flame red	427 x 312 x 75	15.87	7.94
B2B06086T	F1 shallow	Translucent	427 x 312 x 75	15.87	7.94
B2B06090T	F2 deep	Royal blue	427 x 312 x 150	29.10	14.55
B2B06092T	F2 deep	Flame red	427 x 312 x 150	29.10	14.55
B2B06088T	F2 deep	Translucent	427 x 312 x 150	26.70	13.34



Stainless Steel Dissection Set

14 piece dissecting kit in leather storage case.

Code	List Price, €	Offer Price, €
B2B2144T	51.00	34.70

32% OFF

Unigloves® BioTouch Biodegradable Nitrile Gloves

BioTouch contains a biodegradable technology that kickstarts a biodegradation process only when discarded in an active landfill environment, making these gloves more environmentally friendly with a much faster natural breakdown compared to regular nitrile.

- Latex, powder and phthalate free
- Beaded cuff, textured fingertips
- Length: 240 mm
- AQL 1.5
- Tested to ASTM D5511 and ASTM D5526 - 90% degradation in 490 days compared to regular nitrile
- EN ISO 374-1:2016 Type B (chemical risks)
- EN 374-5:2016 VIRUS (protection against viruses, bacteria and fungi)
- EN 455-1/2/3/4:2000 (medical gloves for single use)
- EN1186 (food contact)

46% OFF



UNIGLOVES®
KEEPING YOU SAFE



Code	Size	Pack	List Price, €	Offer Price, €
B2B9000T	Small	1000	182.00	98.00
B2B9002T	Medium	1000	173.00	93.00
B2B9004T	Large	1000	173.00	93.00
B2B9006T	X large	1000	182.00	98.00

SLS Select Low Form Beakers

- Ideal for general laboratory use
- White graduations and marking spot
- Made from high quality borosilicate glass
- High chemical and thermal resistance
- Staple item of any laboratory
- Standards equivalent to ISO 3819



UP TO 68% OFF



Code	Capacity, mL	Dims, Ø x h, mm	Pack	List Price, €	Offer Price, €
B2B06332T	25	34 x 50	12	14.95	4.95
B2B06334T	50	42 x 60	12	16.10	5.41
B2B06336T	100	50 x 70	12	23.00	7.30
B2B06338T	150	60 x 80	12	27.60	9.26
B2B06340T	250	70 x 95	12	32.20	10.75
B2B06342T	400	80 x 110	12	34.50	12.08
B2B06344T	600	90 x 125	6	27.60	9.14
B2B06346T	1000	105 x 145	6	32.20	11.27

SLS Select Conical Flasks

- With white graduations and marking spot
- Made from high quality borosilicate glass
- High chemical and thermal resistance
- Used for many laboratory applications
- Standards equivalent to ISO 1773

UP TO 71% OFF



Code	Capacity, mL	Dims, h x Ø x neck Ø, mm	Pack	List Price, €	Offer Price, €
B2B06358T	50	80 x 54 x 24	12	40.30	13.97
B2B06360T	100	105 x 64 x 29	12	43.70	15.07
B2B06362T	250	145 x 85 x 31	6	29.90	9.78
B2B06364T	500	184 x 103 x 36	6	35.70	10.24
B2B06366T	1000	131 x 214 x 42	6	51.00	18.80

SLS Select Media Bottles

- Perfect for everyday laboratory use
- Suitable for many applications, such as storage of culture media
- Made from high quality borosilicate glass 3.3 to ISO 3585
- Heat and chemical resistance
- GL45 blue polypropylene cap and pouring ring
- White graduations and marking spot
- Sloped shoulders for easy pour
- Standards to ISO 4796-1

UP TO 70% OFF



Code	Capacity, mL	Dims, Ø x h, mm	Pack	List Price, €	Offer Price, €
B2B06348T	100	56 x 100	10	42.60	12.88
B2B06354T	250	70 x 138	10	52.00	15.53
B2B06350T	500	86 x 176	10	60.00	18.17
B2B06352T	1000	101 x 225	10	83.00	29.30
B2B06356T	2000	136 x 260	10	152.00	55.00
B2B8342T	5000	186 x 330	Each	164.00	60.00
B2B8344T	10000	234 x 410	Each	282.00	95.00
B2B8346T	20000	299 x 505	Each	431.00	158.00

Merck Millipore® Stericup®/Steritop® Filter Solutions

1 YEAR



Millipore®
Preparation, Separation,
Filtration & Monitoring Products



The Stericup® and Steritop® sterile filters are designed as a greener alternative for vacuum sterile filtration that significantly reduces plastic and packaging, used for sterile vacuum filtration of aqueous solutions such as tissue culture media and biological fluids. The Stericup® is combined with a receiver flask and cap for processing and storage whereas the Steritop® attaches to your own compatible labware.

- Less plastic and packaging
- Thread directly onto any commercial media bottle or glass bottle suitable for vacuum
- Sterile

20% OFF

Supplied in packs of 12



Code	Model	Capacity, mL	Pore Size, µm	Thread	List Price, €	Offer Price, €
B2B3006	Stericup®	500	0.22	38	227.00	182.00
B2B3008	Stericup®	500	0.22	45	227.00	182.00
B2B3010	Stericup®	1000	0.22	38	299.00	239.00
B2B3012	Stericup®	1000	0.22	45	299.00	239.00
B2B3014	Steritop®	-	0.22	38	147.00	117.00
B2B3016	Steritop®	-	0.22	45	147.00	117.00

SLS Select Serological Pipettes

- Manufactured in compliance with the current versions of the ISO 13485 and FDA CFR 21 Part 820, cGMP
- Made from USP Class VI polystyrene resin
- Crisp, dark ascending and descending as well as negative graduations
- Colour-coded rings for easy identification
- Plugged
- Non pyrogenic; RNase/DNase free; Sterile



UP TO 88% OFF

Code	Volume, mL	Packaging	Inner Pack	Pack	List Price, €	Offer Price, €
B2B06382T	1	Individual	100	1000	266.00	114.00
B2B06384T	1	Bulk	25	1000	158.00	95.00
B2B06388T	2	Bulk	25	1000	336.00	102.00
B2B06392T	5	Individual	50	200	86.00	39.70
B2B06390T	5	Bulk	25	500	294.00	93.00
B2B06394T	10	Individual	50	200	128.00	42.30
B2B06396T	10	Bulk	25	500	328.00	99.00
B2B06402T	50	Individual	20	100	283.00	32.80

SLS Select Glass Vials

NEW

Having the right containers for sample storage and analysis is crucial. These glass vials and bijous provide an excellent solution for storing, transporting and handling a wide variety of samples, ensuring the accuracy and reliability of experimental outcomes.

See the SLS website for more offers!

UP TO 63% OFF



Code	Description	Pack	List Price, €	Offer Price, €
B2B1038T	Screw neck vial, tall form, with polypropylene closure, 1.75mL	882	247.00	145.00
B2B1042T	Bijou, with polypropylene cap, 7mL	1715	627.00	330.00
B2B1034T	Screw neck vial, tall form, with polypropylene closure, 7mL	399	170.00	86.00
B2B1026T	Universal vial, with fitted aluminium cap, 7mL	288	201.00	129.00
B2B1016T	Screw neck vial, tall form, with polypropylene closure, 10.5mL	399	169.00	92.00
B2B1014T	Screw neck vial, tall form, with polypropylene closure, 14mL	264	121.00	66.00
B2B1032T	Screw neck vial, squat form, with polypropylene closure, 14mL	190	117.00	43.70
B2B1020T	Screw neck vial, squat form, with polypropylene closure, 28.2mL	140	114.00	43.00
B2B1024T	Universal vial, with fitted aluminium cap, 30mL	144	183.00	108.00
B2B1066T	Specimen tube, flat bottom, with push-in polythene stopper, Ø x h: 12 x 50mm	100	43.20	16.10

Thermo Scientific™ SureSTART™ Chromatography Consumables

thermo scientific

Level 1 SureSTART™ chromatography consumables provide an affordable choice suitable for use with all HPLC/UHPLC instrument types, quality tested to deliver the performance, sample security, and reproducibility you need for everyday chromatography analysis.

Supplied in packs of 100

30% OFF



Code	Description	List Price, €	Offer Price, €
B2B1228T	Clear glass crimp top vials, 2mL	11.97	8.38
B2B1230T	Clear amber glass crimp top vials, 2mL	15.74	11.02
B2B1232T	Silver aluminium 11mm crimp caps, white silicone/red PTFE septa	22.80	15.93
B2B1234T	Silver aluminium 11mm crimp caps, natural rubber/clear TEF septa	10.78	7.54
B2B1240T	Clear polypropylene screw top vials with fixed inserts, 0.4mL	24.70	17.31
B2B1236T	Clear glass screw top vials, 2mL	10.9	7.64
B2B1238T	Amber glass screw top vials, 2mL	13.96	9.78
B2B1242T	Blue 9mm screw caps, white silicone/blue PTFE septa	19.16	13.41
B2B1244T	Blue 9mm screw caps, bonded white silicone/white PTFE septa	26.30	18.43

SLS Select Measuring Cylinders

- Calibrated to Class B tolerances
- Can be used for many applications where a high accuracy level of volume measurement isn't critical
- Made from high quality borosilicate glass
- High chemical and thermal resistance
- Sturdy hexagonal glass base
- White graduations
- Standards equivalent to ISO 4788

UP TO
72% OFF



Code	Capacity, mL	Height, mm	Pack	List Price, €	Offer Price, €
B2B06368T	10	135	2	10.35	3.11
B2B06370T	25	160	2	11.50	3.57
B2B06372T	50	195	2	12.65	4.26
B2B06374T	100	250	2	16.10	4.49
B2B06376T	250	300	2	26.50	8.74
B2B06378T	500	350	2	39.10	13.23
B2B06380T	1000	430	Each	29.90	9.89

SLS Lab Basics Bottletop Dispensers

2 YEARS



Ergonomically designed for easy use and outstanding performance, in addition to being extremely durable and reliable. Calibrated in ISO 17025 accredited calibration facility.

- Fully autoclavable
- A single tool needed for recalibration
- Volume lock: smooth and accurate volume setting
- Universal bottle adapter: comes with 4 additional adapters for regular bottle sizes
- Uncomplicated mounting: snap-fit mounting of discharge tube

UP TO
51% OFF



Code	Volume Range, mL	Graduations, mL	List Price, €	Offer Price, €
B2B06184T	1 - 10	0.2	293.00	144.00
B2B06186T	2.5 - 30	0.5	316.00	167.00
B2B06188T	5 - 60	1	332.00	167.00
B2B9378T	10 - 100	2	351.00	178.00

SLS Select Premium Wash Bottles

Wide mouth wash bottles made of low density polyethylene (LDPE) for superior quality and strength. The low density polyethylene plastic is very responsive, with smooth bounce back that won't get stiff over time.

- Each bottle is labelled for featuring chemical information as well as hazard, safety, and first aid precautionary statements
- Wide mouth for easy refilling
- Colour coded leak proof cap with built in squeeze control nozzle included
- Self venting design eliminates leaks and dripping
- 500mL capacity

49% OFF



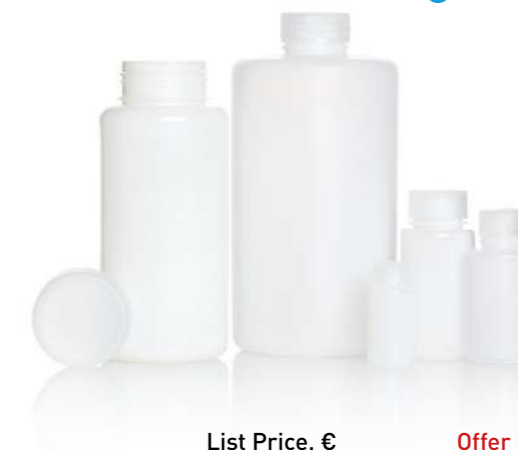
Code	Cap Colour	Label	List Price, €	Offer Price, €
B2B2234T	Red	Acetone	26.10	13.34
B2B2236T	Natural	Distilled water	26.10	13.34
B2B2238T	Yellow	Isopropanol	26.10	13.34
B2B2240T	White	Ethanol	26.10	13.34
B2B2242T	Green	Methanol	26.10	13.34
B2B2244T	Blue	Sodium hypochlorite	26.10	13.34

Azlon® Wide Neck HDPE Round Bottles



- Translucent, rigid HDPE bottles with polypropylene screw caps
- Leak-proof, liner-less design with smooth inner contours
- Suitable for food contact applications

UP TO
46% OFF



Code	Capacity, mL	Pack	List Price, €	Offer Price, €
B2B2462	30	10	12.32	7.51
B2B2464	60	10	15.71	9.00
B2B2466	100	10	15.71	9.42
B2B2468	125	10	18.12	10.83
B2B2470	150	10	18.12	9.83
B2B2472	250	10	32.80	19.35
B2B9290	500	10	40.90	23.60
B2B9292	1000	5	35.10	21.40
B2B2478	2000	5	59.00	35.40

SLS Lab Pro Personal Benchtop Autoclaves

The SLS Lab Pro personal autoclaves are ideal for general laboratory use. They can be used for sterilising media, glassware and instruments. These autoclaves are easy to operate with simple one touch operation and fast cycle times. There is a choice of models with either 9L or 12L capacities. B2B1076T is designed with additional safety features for sterilising media.

- Lightweight and portable
- Sterilising temperatures ranging from 121°C to 126°C

UP TO
28% OFF



Code	Description	Capacity, L	Max Temp, °C	Chamber Dims, Ø x d, mm	List Price, €	Offer Price, €
B2B1072T	Standard autoclave	9	126	210 x 230	1231.00	891.00
B2B1074T	Autoclave with gauges	12	126	210 x 270	1630.00	1185.00
B2B1076T	Media autoclave	12	121	210 x 270	1508.00	1144.00

Benchmark BactiZapper™ Infrared Microsteriliser

2 YEARS

Benchmark Scientific

The BactiZapper™ is a research steriliser that utilises an asbestos-free core element that uses intense heating to produce 815°C (1500°F), completely sterilising in 5 to 7 seconds. The ceramic heating element is safely enclosed in a perforated stainless steel guard chamber, protecting users from accidental contact with the extreme temperatures of the core area. It is extremely compact, convenient and can be used in anaerobic and aerobic chambers.

- Complete sterilisation of loops and tube mouths
- Safe, convenient and no spatter
- Eliminates the need for an open flame

53% OFF



Code	Dims, w x d x h, mm	List Price, €	Offer Price, €
B2B2416	102 x 152 x 165	569.00	270.00

SLS Lab Pro Safevac Aspiration System

1 YEAR

LAB PRO

- Designed for laboratory waste recovery and separation of liquid and solid
- Vacuum power can be set to different levels to achieve 1 - 15mL/s aspirating speed
- Sensitive level sensor to prevent liquid overflow during operation
- Waste bottle, tubing and handle are fully autoclavable
- Wide range of adapters to fit tubes and microplates

58% OFF



Code	Vacuum Range, mbar	Vacuum Speed, mL/S	Volume, L	Dims, w x d x h, mm	List Price, €	Offer Price, €
B2B06242T	0 - 600	1 - 15	4	180 x 240 x 450	1911.00	799.00

SLS Select Pipette Filter Tips

LAB SELECT

Pre-sterilised pipette tips with a 10⁻³ sterilisation assurance level, an inert aerosol filter that will not harm samples in the event of over-pipetting, and low retention technology for maximum sample retainment.

- Certified RNase/DNase, PCR inhibitor, and human DNA free
- Non-pyrogenic
- Packaged in durable racks with hinged lids

UP TO
74% OFF



Code	Volume, µL	Length, mm	Pack	List Price, €	Offer Price, €
B2B1274T	10	Extended, 45.0	960 (10 x 96)	131.00	45.40
B2B1276T	20	51.4	960 (10 x 96)	146.00	45.40
B2B1278T	100	51.4	960 (10 x 96)	146.00	45.40
B2B1280T	200	50.7	960 (10 x 96)	153.00	45.40
B2B1282T	200	Extended, 77.5	768 (8 x 96)	125.00	47.20
B2B1284T	300	Extended, 77.5	768 (8 x 96)	125.00	47.20
B2B1286T	1000	72.0	1000 (10 x 100)	182.00	47.20
B2B1288T	1250	Extended, 102.0	768 (8 x 96)	160.00	47.20

SLS Lab Basics Variable Volume Pipettes

3 YEARS



Single Channel:

- Ergonomic design ensuring light weight & soft plunger movement
- Click-stop system for volume selection
- Colour coded for easy identification
- Calibration conforms to EN-ISO 8655 with report enclosed with every pipette

Multi Channel:

- Smooth and light tip loading and ejection
- Leak free sealing of tips
- Manifold is easily removable, fully autoclavable and can rotate 360° for easy right or left hand operation



UP TO
71% OFF

Code	Channel	Volume Range, µL	Compatible Tips	List Price, €	Offer Price, €
B2B06156T	Single	0.1 to 2.5	10µL/10XL	176.00	55.00
B2B06158T	Single	0.5 to 10	10µL/10XL	176.00	55.00
B2B06160T	Single	2 to 20	10XL	176.00	55.00
B2B06162T	Single	5 to 50	20L/100µL	176.00	55.00
B2B06164T	Single	10 to 100	100µL/200µL	176.00	55.00
B2B06166T	Single	20 to 200	200µL/300µL	176.00	55.00
B2B06168T	Single	100 to 1000	1000µL/1250µL	176.00	55.00
B2B06170T	Single	500 to 5000	5000µL	209.00	62.00
B2B06172T	Single	1000 to 10000	10000µL	209.00	62.00
B2B06174T	8	0.5 to 10	10µL/10XL	782.00	224.00
B2B06176T	8	5 to 50	20µL/100XL	782.00	224.00
B2B06178T	8	10 to 100	100µL/200µL	782.00	224.00
B2B06180T	8	20 to 200	200µL/300µL	782.00	224.00
B2B06182T	8	30 to 300	200µL/300µL	782.00	224.00

SLS Lab Basics Pipette Filler

5 YEARS



Lightweight, UV resistant material, featuring adjustable valves and 3 modes (high, low, gravity). Filling and dispensing speed is easily set using the same hand by pressing the large mode button. Uses standard 0.45µm hydrophobic filters.

- Supplied with charger, bench stand, magnetic/fixable wall mount and 5 coloured nose cones

UP TO
51% OFF



Code	List Price, €	Offer Price, €
B2B06190T	302.00	150.00

Warranty excludes rechargeable battery (1 year warranty) and replacement filter

SLS Lab Pro Variable Volume Pipettes

3 YEARS



The SLS Lab Pro pipettes offer superior quality at an affordable price. These are lightweight pipettes with a handle that fits naturally in the hand. A lubricated piston assembly offers very light pipetting forces.

- Adjustable tip ejector button to adapt to both right- and left-handed users
- Clip mechanism allows easy and safe removal of tip ejector
- Fully autoclavable

UP TO
67% OFF



Code	Channel	Volume Range, µL	List Price, €	Offer Price, €
B2B06292T	Single	0.2 to 2	374.00	127.00
B2B06294T	Single	1 to 10	374.00	127.00
B2B06296T	Single	2 to 20	374.00	127.00
B2B06298T	Single	10 to 100	374.00	127.00
B2B06300T	Single	20 to 200	374.00	127.00
B2B06302T	Single	100 to 1000	374.00	127.00
B2B06304T	Single	500 to 5000	377.00	138.00
B2B06306T	Single	1000 to 10000	377.00	150.00
B2B06308T	8	0.5 to 10	859.00	282.00
B2B06310T	8	2 to 20	859.00	282.00
B2B06312T	8	20 to 200	859.00	293.00
B2B06314T	8	20 to 300	859.00	293.00
B2B06316T	12	0.5 to 10	988.00	334.00
B2B06318T	12	2 to 20	988.00	334.00
B2B06320T	12	20 to 200	988.00	345.00
B2B06322T	12	20 to 300	988.00	345.00

Gilson PIPETMAN® L Pipettes

3 YEARS

Lightweight and balanced, PIPETMAN® L combines an ergonomic design with minimised pipetting forces, giving you the ability to pipette longer without fatigue.

- Adjustable tip ejector button to adapt to both right and left handed users
- True volume-locking mechanism
- Fully autoclavable without disassembly
- **B2B06470 includes:** 4 x PIPETMAN® L pipettes: P2L, P20L, P200L, and P1000L (metal ejectors), 3 x PIPETMAN® DIAMOND tips TIPACKS: DL10, D200 and D1000, 4 x SINGLE™ pipette holders and 4 x plastic tip ejectors

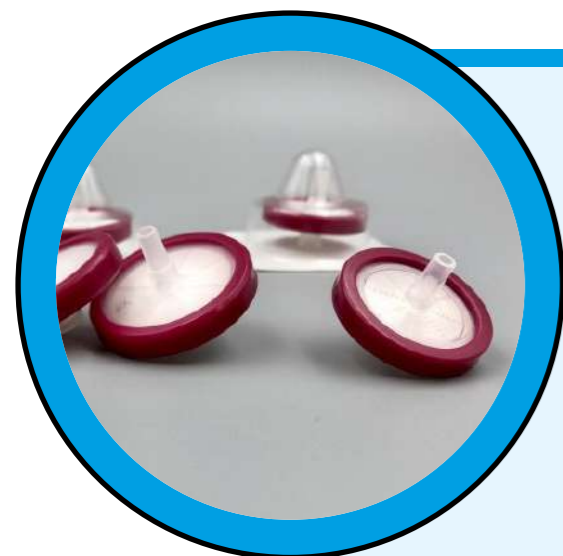
UP TO
42% OFF



GILSON



Code	Channel	Volume Range, µL	Pack	List Price, €	Offer Price, €
B2B06470	Single	Mixed	4	1304.00	868.00
B2B2114	8	1 to 10	Each	960.00	581.00
B2B2106	8	2 to 20	Each	960.00	581.00
B2B2110	8	20 to 200	Each	960.00	581.00
B2B2118	8	20 to 300	Each	960.00	581.00
B2B2122	8	100 to 1200	Each	1007.00	610.00
B2B2116	12	1 to 10	Each	1119.00	650.00
B2B2108	12	2 to 20	Each	1119.00	650.00
B2B2112	12	20 to 200	Each	1119.00	650.00
B2B2120	12	20 to 300	Each	1119.00	650.00
B2B2124	12	100 to 1200	Each	1175.00	667.00



SLS Select PES Syringe Filters

- Diameter: 25mm
- Sterile

Supplied in packs of 50, individually wrapped

Code	Pore Size, µm	List Price, €	Offer Price, €
B2B06412T	0.22	90.00	31.10
B2B06414T	0.45	90.00	31.10

65% OFF

Gilson PIPETMAN® Pipettes

3 YEARS

PIPETMAN®, recognised as the pipetting standard for its reliability and proven durability, is a fully adjustable, air-displacement pipette that uses disposable tips. PIPETMAN® combines legendary accuracy, precision, and durability with easy pipetting and handling.

- Lower forces for enhanced pipetting habits with a standard pipette
- Built-to-last, it is the economical solution for years of pipetting
- Simple to maintain
- **B2B9078 includes:** 4 x PIPETMAN® pipettes: P2, P20, P200, and P1000 (metal ejectors), 3 x PIPETMAN® DIAMOND tips TIPACKS: models DL10, D200, and D1000, 4 x SINGLE™ pipette holders, 4 x PIPETMAN® comfort handles, 1 x sheet of 12 PIPETMAN® comfort handle labels

40% OFF

GILSON



Code	Channel	Volume Range, µL	Pack	List Price, €	Offer Price, €
B2B9078	Single	Mixed	4	1233.00	799.00
B2B06490	8	1 to 10	Each	837.00	500.00
B2B06492	8	2 to 20	Each	837.00	500.00
B2B06494	8	20 to 200	Each	837.00	500.00
B2B06496	8	30 to 300	Each	837.00	500.00
B2B06498	12	1 to 10	Each	978.00	587.00
B2B06500	12	2 to 20	Each	978.00	587.00
B2B06502	12	20 to 200	Each	978.00	587.00
B2B06504	12	30 to 300	Each	978.00	587.00

Gilson MICROMAN® Capillary Piston Tips

1 YEAR

Designed to fit the Gilson MICROMAN® positive displacement pipette, Capillary Piston tips are ideal for difficult-to-pipette samples including; viscous, volatile, dense, hot or cold, or hazardous liquids. The tips work like a syringe providing protection against pipette, sample, and user contamination, and produce accurate, reproducible, and precise results.

- No contact between the sample and the pipette
- Tips are made of pure polypropylene

Purchase and receive FREE compatible MICROMAN® E positive displacement pipette worth €407!

30% OFF
with FREE
Pipette

GILSON



Code	Volume Range, µL	Pack	List Price, €	Offer Price, €
B2B2706	3 to 25	4800 (50 x TIPACKs™ of 96)	2128.00	1495.00
B2B2702	50 to 250	4800 (50 x TIPACKs™ of 96)	2128.00	1495.00
B2B2698	100 to 1000	4004 (44 x TIPACKs™ of 91)	2176.00	1495.00

SLS Lab Basics Mini Centrifuge 2 YEARS

Ideal for microfiltration and quick spin downs from the walls and caps of microcentrifuge tubes. The compact design saves bench space and features an easy-open clear lid. Simply close the lid for acceleration and open the lid for deceleration, or alternatively use the on/off switch to control.

- Fixed speed
- Easy to use with dual start/stop function
- Compact design
- Whisper quiet operation
- Ideal for quick spin downs of microtubes and PCR tubes
- Universal voltage
- Rotor change without tools
- Accelerates and brakes in seconds
- Supplied with 8 place 1.5/2.0mL microtube rotor and 16 place [2 x 8 strips] PCR rotor

62% OFF



SLS LAB BASICS



Code	Max Speed, RPM	Max RCF, x g	Dims, w x d x h, mm	List Price, €	Offer Price, €
B2B06202T	7000	2680	160 x 170 x 122	244.00	92.00

SLS Lab Basics my-FUGE 12 Place Centrifuge 2 YEARS

Eliminate the need to change rotors when switching between microtubes and PCR strips with the unique COMBI-Rotor™ (included) allowing the running of 12 x 1.5/2.0mL microtubes and 4 PCR strips simultaneously. With a fixed speed that produces 2000xg, this centrifuge is perfect for quick spin downs.

- Twice the capacity of most mini centrifuges
- Near silent operation
- Starts and stops with closing/opening of the lid
- Conserves valuable bench space

54% OFF



SLS LAB BASICS

Code	Max Speed, RPM	Max RCF, x g	Dims, w x d x h, mm	List Price, €	Offer Price, €
B2B7092	5500	2000	146 x 203 x 108	744.00	345.00

SLS Lab Basics 12 Place Microcentrifuge 2 YEARS

Compact and powerful high speed centrifuge, ideal for research applications including sedimentation of cells and viruses and isolation of macromolecules such as DNA, RNA, proteins or lipids. It consists of a large LCD display which provides all visual information and a unique cooling design which minimises rotor heating.

63% OFF

- Whisper quiet operation – less than 56dB
- Automatic door lock
- Automatic internal diagnosis
- Fully autoclavable polypropylene rotor
- Run time: 30 sec – 99 min
- Pulse operation for quick spins
- Sound alert function
- Over temperature detector
- Over speed detector
- Supplied with 12 position 1.5/2.0mL microtube rotor



SLS LAB BASICS

Code	Max Speed, RPM	Max RCF, x g	Dims, w x d x h, mm	List Price, €	Offer Price, €
B2B06204T	15000	15100	245 x 255 x 140	1728.00	633.00

SLS Lab Basics Digital Orbital Shaker 5 YEARS

A dependable and versatile shaker for a vast range of protocols. Create your own matrix for vessels of all shapes and sizes with hi-lo platform and bungee cords. Instantly adjusts to weight load changes and unbalanced loads with no-stop electronic motor feedback allowing for truly reproducible results.

- Durable ABS construction suitable for use in incubators (excluding CO₂) and cold rooms
- Run time: 0 to 74 hours and 59 minutes, 1 second increments or continuous
- Soft start and shut down
- Designed to handle heavy loads up to 4.5kg
- Overload protection
- Supplied with skid-free rubber platform mat, 8 x bungee cords and universal hi-lo platform with soft rubber edge bumpers

33% OFF



SLS LAB BASICS



Code	Orbit Size, mm	Speed Range, RPM	Platform Dims, mm	Dims, l x w x h, mm	List Price, €	Offer Price, €
B2B7300T	19	20 to 300	279 x 279	314 x 179 x 314	1120.00	748.00

SLS Flowgen Plate Spinner ^{2 YEARS}



Rapidly spin down droplets in PCR or microplates to improve PCR yields or give more consistent assay results. The swing out rotor has two plate carriers that rest at a 75° angle. This allows plates to be inserted confidently without sealing tapes or caps. Most samples can be spun down in less than 20 seconds. To end a run, simply open the lid and the automatic, electric brake brings the rotor to a quick, smooth stop in just 4 seconds.

- Unique swing-out rotor design prevents spillage
- Accepts most types of PCR plates
- Capacity: 2 x PCR plates (when stacking skirted PCR plates, max. capacity is 4 plates); 2 x microplates
- Remarkably small footprint

62% OFF



Code	Max Speed, RPM	Max RCF, x g	Dims, w x d x h, mm	List Price, €	Offer Price, €
B2B06236	2550	600	230 x 260 x 197	1363.00	518.00

Azenta Semi-Automated Sheet Heat Sealer



A semi-automatic heat sealer which is compatible with a wide range of seals and plates of differing designs and heights. With variable temperature and time settings, sealing conditions are easily optimised to produce a 100% seal, eliminating sample loss.

- Suitable for a wide range of plate types
- Quick start up
- Real time temperature display

27% OFF
with FREE Pack of Heat Seals



Purchase to receive FREE pack of 100x 125 x 78mm heat seals! Choose from below, specify when ordering:

- Clear Heat Seal Optically Clear Plate Seal Peel-Able (B2B3018)
- Clear Weld Heat Seal Plate Seal Optically Clear Sheets Non-Peelable (B2B1532)
- Individual Access Peel Heat Seals (B2B1536)

Code	Dims, w x d x h, mm	List Price, €	Offer Price, €
B2B1524	181 x 275 x 310	5448.00	3999.00

SLS Flowgen 3D MiniMixer ^{2 YEARS}



Multi-functional shaker which provides a 3-dimensional “nutating” motion for thorough, foam-free mixing in blood and centrifuge tubes, as well as in a variety of flat vessels. Feature maintenance free, brushless motors capable of loads up to 2kg and are safe for use in cold rooms and incubators.

- Includes dimpled mat; ideal for mixing in blood & centrifuge tubes
- Optional flat mats are also available for mixing other vessel types
- Stacking platforms sold separately, effectively doubling the usable surface area
- Tri-directional motion for thorough, uniform mixing

50% OFF



Code	Speed, RPM	Tilt Angle, °	Platform Dims, mm	Dims, w x d x h, mm	List Price, €	Offer Price, €
B2B7082	24 (fixed)	20	270 x 190	270 x 190 x 200	677.00	339.00

SLS Flowgen 2D Benchrocker ^{2 YEARS}



Designed to provide the precise speeds and tilt angles required for a broad range of molecular and biological mixing applications. The user can adjust both parameters to match the vessel size and the volume of liquid being mixed, yielding optimum results. Provides a gentle wave effect for non-foaming mixing, as is required for most blot washing and gel work. When set to higher speeds and more extreme tilt angles, they produce aggressive agitation for vigorous sample mixing.

- Accepts stackable platforms (clearance = 70mm)
- Safe for use in cold rooms and incubators

49% OFF



Code	Speed Range, RPM	Tilt Angle, °	Platform Dims, mm	List Price, €	Offer Price, €
B2B7080T	2 to 30	0 to 30	350 x 300	1239.00	633.00

SLS Lab Basics Vortex Mixer 2 YEARS



Compact and stable design with electronic speed control ensures the same speed is maintained at all times, even during changes of load and also features continuous or touch operation. The orbital diameter of 4mm provides effective and efficient mixing inside the sample.

- Quiet and compact stable design
- Continuous or touch operation
- Electronic speed control for constant speed even during changes in load
- Aluminium cast base with silicone feet for excellent stability and vibration damping



67%
OFF



Code	Speed Range, RPM	Dims, w x d x h, mm	List Price, €	Offer Price, €
B2B06222T	0 - 2500	127 x 160 x 130	344.00	115.00

OHAUS Vortex-Genie™ 2 Vortex Mixer 2 YEARS



The Vortex-Genie™ 2 is a variable speed vortex action mixer which offers gentle to vigorous shaking or low to high-speed vortex action. The legendary Vortex-Genie™ you trust is now part of OHAUS! As a global leader in instruments and equipment, we assure you that the performance and quality of the Vortex-Genie™ will remain exceptional.

- Automatic start/stop feature for one-handed operation
- Broad range of attachments for most tubes, plates and other containers
- Suitable for use in cold rooms and incubators
- Supplied with pop-off cup and 3" platform

37%
OFF



Code	Speed Range, RPM	Orbit Size, mm	List Price, €	Offer Price, €
B2B2802	600 to 3200	4	393.00	248.00

IKA Lab Dancer Vortex Mixer 2 YEARS



The IKA Lab Dancer is a compact test tube shaker with a touch function, designed for mixing small sample tubes up to 30mm diameter.

- Fixed speed (2800 RPM)
- Includes light 12V power pack set
- Upper casing and the test tube surface are made from inert plastic, bottom section is a coated, zinc die-casting
- Protection class IP40



25%
OFF

Code	List Price, €	Offer Price, €
B2B9140	278.00	209.00



Laboratory Equipment



DO MORE WITH OHAUS

The powerful combination of OHAUS and Genie – Stronger Together

OHAUS welcomes Genie's trusted sample preparation products to its family. Five integrated product lines—vortex mixers, bead homogenizers, cell disruptors, rotators, and rotating incubators—enhance workflow flexibility and integration. Together, OHAUS and Genie deliver complete sample handling solutions for modern laboratories.

Do More with OHAUS – your all-in-one lab partner.

The New Name in Laboratory Servicing

Why choose Labserve?



Built on the combined expertise of the teams behind **C&M Scientific and Northern Balance**



Nationwide service delivered by **38 locally based engineers**



ISO 17025 accredited and **ISO 9001, 14001** and **45001** certified



Maintenance and repair support for most major laboratory equipment brands



Supporting **MHRA** and **FDA** compliance



Backed by the **UK's largest independent laboratory supplier**

Enter to WIN!

The first 100 enquiries will be entered into a draw to win a

€500 Amazon voucher



Scan to discover our services and request a quote

www.labserve.ie



Our service capabilities can be found below, but get in touch if you have requirements outside of this list...

Equipment	Repair	Calibration	UKAS ISO 17025 Calibration	Mapping Including Chamber UKAS ISO 17025 Calibration	Maintenance Contracts	Validation
Aspirators	✓	-	✓	✓	✓	-
Autoclaves	✓	✓	✓	✓	✓	✓
Balances (Semi Micro, Micro, Precision, Portable & Moisture)	✓	✓	✓	-	✓	✓
Balance Scales (Bench, Compact, Counting, Crane, Floor, Pallet Truck, Platform)	✓	✓	✓	-	✓	✓
Cell Washers	✓	✓	✓	✓	✓	✓
Centrifuges (Benchtop/Floorstanding)	✓	✓	✓	-	✓	✓
Climatic Stability Chambers	✓	✓	✓	✓	✓	✓
Cryostorage LN ₂ Freezers, Associated Plant, O ₂ Monitoring, & Extract LN ₂ Generators	✓	✓	✓	✓	✓	✓
Dry Block Heaters	✓	✓	✓	✓	✓	✓
Drying Cabinets	✓	✓	✓	✓	✓	✓
Drying Ovens	✓	✓	✓	✓	✓	✓
Freeze Dryers	✓	✓	✓	✓	✓	✓
Gas Monitoring & Detection Safety Systems	✓	✓	✓	✓	✓	✓
Hotplate Stirrers	✓	-	✓	✓	✓	-
Ice Flakers	✓	-	-	-	✓	-
Incubators/O ₂ /CO ₂ /RH/Shakers	✓	✓	✓	✓	✓	✓
Platelet Storage Systems	✓	✓	✓	-	✓	✓
Media Preparation	✓	✓	✓	✓	✓	✓
Microscopes (Basic, Entry & Advanced)	✓	✓	✓	✓	✓	✓
pH Meters	✓	✓	✓	✓	✓	✓
Pipettes (Single & Multichannel, Repeater)	✓	✓	✓	-	✓	-
Plasma Thawers	✓	✓	✓	✓	✓	✓
Refrigerators & Freezers (Laboratory, Blood Bank & Controlled Rate)	✓	✓	✓	✓	✓	✓
Safety Cabinets	✓	✓	✓	✓	✓	✓
Spectrophotometers	✓	✓	✓	✓	✓	✓
Temperature Monitoring Systems	✓	✓	✓	-	✓	✓
Test Weights	-	✓	✓	-	✓	-
Thermometers	✓	✓	✓	✓	✓	-
Vacuum Ovens & Concentrators	✓	✓	✓	✓	✓	✓
Vacuum Pumps	✓	-	✓	✓	✓	-
Walk-In Rooms	✓	✓	✓	✓	✓	✓
Water Chillers, Recirculators & Baths	✓	✓	✓	-	✓	✓
Water Purification Systems	✓	✓	-	-	✓	✓

The Science of Reliable Service



SLS Lab Basics DigiRoll 6 Tube Roller

2 YEARS



6 tube roller providing a rocking and rolling motion for optimum mixing of viscous samples. Equipped with a powerful brushless DC motor for maintenance free long life and quiet operation. Microprocessor controller gives accurate speed under variable load, and the programming feature means the user can save and run up to 9 user defined programs.

42% OFF

- Digital display with soft touch keypad
- IP 21 protection class
- Timer from 1 min to 99 min and infinite mode
- User can set pulse time from 30 to 99 seconds
- Adjustable rollers spacing to hold different diameter tubes
- Stackable design with robust construction



Code	Capacity	Speed Range, RPM	Tilt Angle, °	Dims, w x d x h, mm	List Price, €	Offer Price, €
B2B06224T	15 x 3/4mL tubes	10 to 80	3	502 x 301 x 93	697.00	403.00

SLS Lab Basics TubeRoller 10 Tube Roller

2 YEARS



Designed for gentle, thorough mixing. As the roller mechanism rotates through each complete revolution, the right side of each roller is gently elevated about 13mm and returns to the horizontal starting position. This additional, gentle up/down motion provides a "wave" effect and guarantees that the entire sample is subjected to complete, thorough mixing, end to end. This built in tilt feature provides a level of homogeneous mixing uniformity that cannot be matched by any stationary roller apparatus.

64% OFF

- Gentle rolling motion
- Smooth ±5° tilt action
- For tubes/bottles from 8 to 200mm diameter



Code	Speed Range, RPM	Dims, w x d x h, mm	List Price, €	Offer Price, €
B2B9036	38	450 x 180 x 90	2094.00	759.00

SLS Lab Basics Hotplate Stirrer, 280°C

3 YEARS



Stainless steel stirrer with a ceramic coated hotplate which resists corrosion. Features a digital control system, ideal for use in physics, chemistry and bio-tech labs.

57% OFF

- Heating temperature up to 280°C
- LED display shows temperature and speed
- 50°C HOT warning indicates residual hotplate temperature
- ABS chemical resistant casing
- Includes **FREE** external temperature sensor PT1000 and support clamp



Code	Capacity, L	Speed Range, RPM	Max Temp, °C	Plate Ø, mm	List Price, €	Offer Price, €
B2B06238T	3	200 to 1500	200-300	135	527.00	224.00

SLS Lab Basics Hotplate Stirrer, 340°C

3 YEARS



Stirrer hotplate with ceramic coated stainless steel plate, widely used in chemical synthesis, physical and chemical analysis, bio-tech labs.

63% OFF

- Simple running interface easy to use and program, automatically identifies temperature sensor PT1000 and transfers to PT1000 operation mode
- LCD display shows target and actual temperatures, as well as set and actual speed
- 'Best in class' brushless motor - will operate continuously at 300°C for up to 1 month
- 20L stirring capacity
- Fully closed assembly guarantees safety and long service life
- HOT warning indicates residual hotplate temperature
- Now with 3 year full warranty
- Includes **FREE** external temperature sensor PT1000 and support clamp



Code	Capacity, L	Speed Range, RPM	Max Temp, °C	Plate Ø, mm	List Price, €	Offer Price, €
B2B06240T	20	100 to 1500	340	135	918.00	339.00

OHAUS Guardian 3000™ Hotplate Stirrers

2 YEARS



OHAUS Guardian 3000™ hotplate stirrers are designed for economical heating and stirring in all laboratory settings. The bright LCD display includes easy-to-read temperature and speed settings, intuitive icons and a prominent hot top indicator that lights up when the heater is above 40°C. Select from three plate sizes to suit your application.

- Stirring from 80 to 1600 RPM
- Ambient temperature range from +5°C to 500°C (ceramic top) or 380°C (ceramic-coated steel top)
- Durable metal housing, PET front panel, control knobs
- Kits supplied with temperature probe and probe holder set



33% OFF

Code	Plate Dims, mm	Plate Material	Kit	List Price, €	Offer Price, €
B2B8374	135 Ø	Ceramic coated	-	534.00	357.00
B2B2796	135 Ø	Ceramic coated	Yes	615.00	411.00
B2B8376	180 x 180	Ceramic	-	587.00	391.00
B2B2798	180 x 180	Ceramic	Yes	656.00	437.00
B2B8378	108 x 108	Ceramic	-	562.00	375.00
B2B2800	108 x 108	Ceramic	Yes	638.00	426.00

SLS Flowgen Digital Dry Baths

2 YEARS



Digital dry baths with accurate "set and walk away" digital temperature selection, eliminating the need for external thermometers and repetitive "fine tuning" of a temperature control knob. Simply enter the desired temperature on the digital touchpad and the dry bath provides accurate temperature with real time monitoring that continuously maintains the selected temperature.

- Assorted blocks for a wide variety of tube sizes sold separately - see SLS website
- Include an easy to use block lifter with a temperature insulated handle
- Built-in user re-calibration function, to guarantee long term temperature accuracy
- Temperature range: ambient +5 to 150°C
- Temperature accuracy: ±0.2°C, increments: 0.1°C, uniformity: ±0.2°C
- Digital timer is built into the touchpad display (1 to 999 minutes)

UP TO 54% OFF



Code	No. Block Positions	Dims, w x d x h, mm	List Price, €	Offer Price, €
B2B7088	1	200 x 230 x 80	838.00	391.00
B2B7090	2	220 x 260 x 80	1048.00	483.00

IKA A 10 Basic Analytical Mill

2 YEARS



The redesigned batch mill grinds hard, brittle, soft and fibrous materials for volumes up to 50mL. Because samples may be embrittled directly in the grinding chamber; tough, oily and aqueous samples can also be grinded.

- Digital timer and counter
- Interval function
- Brushless motor for long service life and low noise level
- Easily exchangeable beater/cutter for a variety of applications
- Supplied with stainless steel cutter

20% OFF



Code	Power, W	Max Speed, RPM	List Price, €	Offer Price, €
B2B1174	300	25000	2540.00	2032.00



Laboratory Equipment



Introducing innovative liquid handling products by BIOTIX

DO MORE WITH OHAUS

From stirrers and shakers to centrifuges, dry block heaters, lifts, and clamps, OHAUS meets the diverse needs of laboratories.

Now expanded with the iconic Genie sample preparation products and innovative Biotix liquid handling solutions, OHAUS offers even greater support across comprehensive laboratory workflows.

Don't limit yourself to measurement — Do More with OHAUS, your all-in-one lab partner.

SLS Lab Pro BeadBug™ Microtube Homogenisers

2 YEARS

High energy benchtop homogenisers that sets the performance standard for personal sized cell disruption and lysis instruments. The optimised mixing motion causes rapid cell disruption through constant high velocity impact from the hardened micro-beads chosen specifically for your sample type. Developed for samples too tough to be homogenised in a common lab vortexer, the BeadBug™ provides a convenient and economical alternative to the traditional, high capacity homogenisers on the market today.

- Extremely powerful mixing for lysis, grinding or homogenisation
- Faster and more effective than tissue grinders
- Homogenise up to 6 samples in disposable 2mL screw cap microtubes
- Extremely compact
- Eliminates the cross contamination



Code	Capacity	Speed Range, RPM	Dims, w x d x h, mm	List Price, €	Offer Price, €
B2B7094	3 x 2mL	2800 to 4000	170 x 210 x 135	1417.00	684.00
B2B1486	6 x 2mL	2500 to 4350	220 x 355 x 205	3214.00	2013.00

Benchmark Pulse 650™ Ultrasonic Homogeniser

2 YEARS

The Pulse 650™ utilises ultrasonic waves and cavitation to disrupt cells, shear DNA and create emulsions. With up to 650W of power, samples from 0.1mL to 500mL can be processed depending on horn used. Pulsed operation, power ratios and other operating parameters are easily set using the large touch screen. The Pulse 650™ is complete with everything needed for operation, including a soundproof enclosure for reducing noise levels.

- Ideal for cell disruption, homogenisation, emulsification and more
- Large touch screen with total control over operating parameters
- Supplied complete with controller, 6mm horn, temperature probe and soundproof enclosure
- UV-C sterilisation and lighted interior of soundproof box



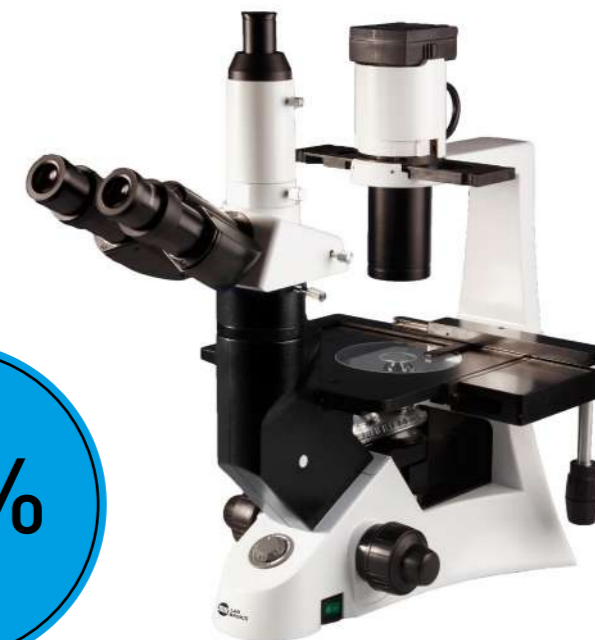
Code	Power, W	Frequency, KHz	List Price, €	Offer Price, €
B2B2408	6.5 to 650	20 to 25	5817.00	4183.00

SLS Lab Basics Inverso TC100 Inverted Microscopes

1 YEAR

Ideal for the typical working laboratory and is built to a high-quality specification. It is robust enough to withstand the rigours of constant daily use and with a quintuple position nose-piece fitted as standard, it is ideally suited for multiple observation techniques and/or magnifications.

- Trinocular head inclined at 45°
- Eyepieces: 10/20mm wide field
- Objectives: 4X, 40X plan-achromatic LWD/10X, 20X, 40X phase contrast
- Condenser: NA 0.3 (removable), working distance 72mm
- Stage: 160 x 250mm with additional mechanical stage (2 interchangeable stage plates) stage extending board
- Focusing: coaxial coarse and fine
- Illumination: 3W LED
- Epi fluorescence module adds blue excitation (460 - 490nm) and green excitation (480 - 550nm)

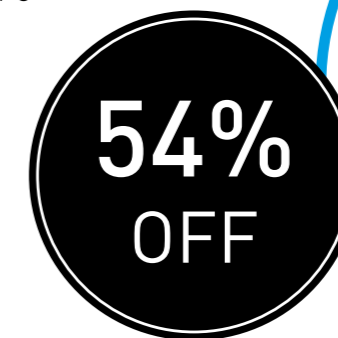


Code	Description	List Price, €	Offer Price, €
B2B06416	With mechanical stage LED	4891.00	2645.00
B2B06418	With epi fluorescence module	13403.00	8050.00

SLS Lab Basics Tablet Microscope Camera

Tablet camera designed for microscopy applications with a high-definition 9.7" colour LCD touchscreen. Equipped with software that allows the user to preview an image, set the white balance, capture images and videos as well as having measurement and annotation capabilities.

- Crystal display, RK3066 dual-core 1.5Hz CPU
- Touch-screen operation, can be used as a small computer
- Includes Wi-Fi and Bluetooth wireless networking for easy file, HDMI output
- Not suitable for fluorescence work
- **FREE** C-mount adapter when purchased with B2B06416 microscope



Code	Camera	List Price, €	Offer Price, €
B2B06420	15fps at 1024 x 768; 1/2.5 (4:3) 5mpx CMOS	1894.00	863.00

OHAUS PR Series Balances

2 YEARS



Offering accuracy and repeatability in essential weighing applications in laboratory, industrial and education settings, PR Series analytical and precision balances deliver competitive performance at an economical price. Featuring RS232 connectivity for easy communication, and a backlit display and a simple interface for uncomplicated operation, the PR is perfectly designed for your workplace.

- Equipped with 3 essential weighing modes
- RS-232 connectivity for data transfer and storage
- Easy-to-read, bright backlit display and a simple user interface, making it easy to operate
- Small footprint saves desktop space while providing a large weighing surface
- Durably constructed, and features a stainless steel pan to withstand day-to-day use



Code	Capacity, g	Readability, mg	Pan Dims, mm	Calibration	List Price, €	Offer Price, €
B2B1004	120	0.1	Ø 90	External	1221.00	821.00
B2B1006	120	0.1	Ø 90	Internal	1413.00	944.00
B2B1008	220	0.1	Ø 90	External	1329.00	890.00
B2B1010	220	0.1	Ø 90	Internal	1520.00	1021.00
B2B1012	220	1	Ø 120	External	874.00	583.00
B2B1014	220	1	Ø 120	Internal	1065.00	714.00
B2B1016	420	1	Ø 120	External	900.00	599.00
B2B1018	420	1	Ø 120	Internal	1089.00	729.00
B2B1020	520	1	Ø 120	External	960.00	637.00
B2B1022	520	1	Ø 120	Internal	1150.00	767.00
B2B1024	1600	10	Ø 180	External	897.00	599.00
B2B1026	1600	10	Ø 180	Internal	1096.00	733.00
B2B1028	2200	10	Ø 180	External	937.00	626.00
B2B1030	2200	10	Ø 180	Internal	1201.00	756.00
B2B1032	4200	10	Ø 180	External	967.00	652.00
B2B1034	4200	10	Ø 180	Internal	1168.00	783.00
B2B1036	4200	100	Ø 180	External	822.00	549.00
B2B1038	4200	100	Ø 180	Internal	1029.00	687.00
B2B1040	6200	100	Ø 180	External	857.00	572.00
B2B1042	6200	100	Ø 180	Internal	1045.00	703.00

SLS Lab Pro A-Series Analytical Balances

5 YEARS



- Compact footprint
- Breeze break with rotary doors that slide behind the balance and can be removed with one touch
- Ideal for applications where space is at a premium
- Reverse backlit LCD display for easy to read weighing results
- Statistical calculation function eliminates the need for a stats printer
- Standard RS-232C
- Fast, compact SHS sensor, response time ~2 seconds



Code	Capacity, g	Readability, mg	Calibration	List Price, €	Offer Price, €
B2B06106T	102	0.1	External	1317.00	651.00
B2B06250T	102	0.1	Internal	1689.00	790.00
B2B06108T	152	0.1	External	1611.00	710.00
B2B06110T	152	0.1	Internal	1977.00	830.00
B2B06112T	252	0.1	External	1835.00	834.00
B2B06252T	252	0.1	Internal	2263.00	997.00

SLS Lab Basics Compact Precision Balances

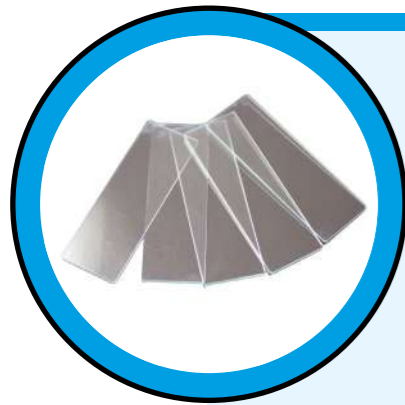
5 YEARS



- Accurate, high quality, attractive, and stackable units
- Perfect for applications where portability or easy storage are paramount
- External calibration
- Supports multiple weighing units like counting, % weighing
- Hygienic and rustproof stainless steel pan
- Security slot at the back for wire-locking to prevent theft
- Power supply: AC adapter or 4 AA size dry batteries (batteries not included)



Code	Capacity, g	Readability, g	List Price, €	Offer Price, €
B2B06024T	310	0.01	312.00	194.00
B2B06026T	3100	0.1	312.00	194.00



SLS Select Slides with Ground Edge, 76 x 26 x 1mm

Supplied in packs of 50

Code	Description	List Price, €
MIC2000	Plain	7.80
MIC2002	Twin frost	3.90

SLS Lab Pro P-Series Precision Balances

5 YEARS



- One touch automatic calibration
- Compact, B5 size footprint
- Fast, 1 second stabilisation
- Large bright vacuum fluorescent display
- Shock absorber function
- Multiple weighing units
- GLP/GMP/GCP/ISO compliant
- Statistical calculation function
- ACAI – Automatic Counting Accuracy Improvement
- Dims, w x d x h: 193 x 262.5 x 85.5mm

UP TO
61% OFF



Code	Capacity, g	Readability, g	Plate Ø, mm	List Price, €	Offer Price, €
B2B06114T	122	0.001	130	1047.00	532.00
B2B06116T	220	0.001	130	1159.00	569.00
B2B06254T	320	0.001	130	1457.00	569.00
B2B06118T	520	0.001	130	1649.00	794.00
B2B06120T	1220	0.01	150	1047.00	532.00
B2B06122T	2200	0.01	150	1120.00	569.00
B2B06256T	3200	0.01	150	1457.00	569.00
B2B06290T	5200	0.01	150	1558.00	794.00



SLS Select Lens Cleaning Tissues

- Ideal solution for cleaning lenses and other optical surfaces made from glass, quartz or plastic.

Supplied in packs of 50

Code	Dims, mm	List Price, €	Offer Price, €
B2B06248T	80 x 100	7.19	5.75

SLS Flowgen Incu-Shaker™ Incubated Shaker

2 YEARS



Compact shaking incubator with a remarkably small footprint. Accepts several platforms and a variety of flasks, tubes and other common vessels. The standard platform (included) features a non-slip, rubber coated surface, ideal for tissue culture flasks, Petri dishes and staining trays.

- Extremely compact, just 280mm wide
- Touch screen control over time, speed and temperature
- Horizontally circular 19mm orbit for aeration & mixing
- Instantly exchange flask clamps with MAGIC Clamp™ accessories
- Program STEP feature for linking consecutive programs
- Accessories sold separately

58% OFF



Code	Temp Range, °C	Speed Range, RPM	Dims, w x d x h, mm	List Price, €	Offer Price, €
B2B7084	Ambient +5 - 70	30 - 300	280 x 480 x 330	5957.00	2473.00

SLS Lab Pro Shaking Water Bath

3 YEARS



Shaking water bath, featuring precision PID temperature control. A broad range of accessory flask clips and racks ensures flexibility for routine and specialised work. The heating footprint provides rapid energy transfer, resulting in quicker heat up times and a reduction in energy consumption and improved temperature uniformity.

- Bold LED display of measured temperatures in real-time and in increments of ±0.1°C, using a precision PID temperature controller
- Temperature alarms to protect your work
- Stroke length is variable up to 40mm
- Shaking system is quiet in use
- Supplied with polycarbonate lid

22% OFF



Code	Capacity, L	Temp Range, °C	Shaking Speed, RPM	Dims, w x d x h, mm	List Price, €	Offer Price, €
B2B9374T	28	Ambient +5 to 99	0 to 200	715 x 332 x 290	2555.00	1984.00

SLS Lab Pro Water Baths



Digital water baths providing a stable temperature environment with digital PID temperature control for precision with an LED display. Controls feature auto alarm settings, illuminated on/off switch, heater and over temperature indications.



- Temperature range: ambient +5 to 99°C
- Over temperature alarm with heater cut off
- Touch pad controls with easy wipe surface
- Painted surfaces feature antibacterial protection, immersed components are corrosion resistant
- Free additional year warranty (4 years total)

Unstirred

- Sensitivity: $\pm 0.2^{\circ}\text{C}$, uniformity: $\pm 0.1^{\circ}\text{C}$
- Supplied with clear, polycarbonate lid



Code	Capacity, L	Ext Dims, w x d x h, mm	Int Dims, w x d x h, mm	Drain Outlet	List Price, €	Offer Price, €
B2B7076T	2	332 x 185 x 135	300 x 150 x 65	No	669.00	454.00
B2B06266T	4	332 x 185 x 290	300 x 150 x 150	No	725.00	518.00
B2B06268T	14	361 x 332 x 290	325 x 300 x 150	Yes	937.00	575.00
B2B06270T	22	538 x 322 x 290	500 x 300 x 150	Yes	967.00	690.00
B2B7078T	28	538 x 332 x 290	500 x 300 x 200	Yes	1119.00	753.00

Stirred

- Sensitivity: $\pm 0.05^{\circ}\text{C}$, uniformity: $\pm 0.01^{\circ}\text{C}$
- Robust thermostirrer constructed from stainless steel for durability
- Low water level is indicated and heating is automatically suspended with an automatic restart when the bath is filled
- Can be set for water temperature or a combination of temperature and time
- Timer programmable to commence once a preset temperature is reached and setting retained once unit is turned off



Code	Capacity, L	Ext Dims, w x d x h, mm	Int Dims, w x d x h, mm	List Price, €	Offer Price, €
B2B06272T	8	271 x 332 x 170	129 x 300 x 150	1265.00	955.00
B2B06274T	14	361 x 332 x 170	219 x 298 x 150	1279.00	966.00
B2B06276T	22	537 x 332 x 170	395 x 298 x 150	1348.00	1029.00

Corning® Vacuum Filter/Storage Bottle Systems



- PES membranes provide the fastest flow rates, the lowest protein binding and low extractables and are best for filtering cell culture media
- Angled hose connector simplifies vacuum line attachment
- Individually packaged, sterile and nonpyrogenic

Supplied in packs of 12



Code	Capacity, mL	Pore Size, μm	Membrane Dims, cm^2	List Price, €	Offer Price, €
B2B2616	150	0.22	13.6	140.00	85.00
B2B2610	250	0.22	19.6	144.00	69.00
B2B2612	500	0.22	33.2	236.00	106.00
B2B2614	1000	0.22	54.5	344.00	108.00

SLS Lab Basics Mini Vacuum Pumps



Single-head, dry-running devices used in a wide range of laboratory applications. They transfer, compress and pump down without contamination.

- 100% oil-free transfer
- PTFE coated version for slightly aggressive or corrosive gases and vapours
- Maintenance-free
- High level of gas tightness
- IP20 motor protection
- Silencer fitted to outlet port
- 6mm hometail on inlet



Code	Diaphragm Material	Delivery, L/min	Ultimate Vacuum, mbar	List Price, €	Offer Price, €
B2B06244T	EPDM rubber	6	100	452.00	311.00
B2B06246T	PTFE coated	5.5	160	532.00	345.00

SLS Lab Pro Analogue Ultrasonic Baths

3 YEARS



With capacities from 1.5L to 25L, the SLS Lab Pro analogue ultrasonic baths offer simple analogue timer and temperature controls, providing entry level ultrasonic baths ideal for cleaning small items for use in a wide range of applications. Supplied with a stainless steel basket and plastic lid. SLS2006 has a non adjustable heater element.

UP TO
35% OFF



- Ambient to 70°C temperature control on heated models
- 0 – 15 minute timer
- Compact and user friendly

Code	Capacity, L	Heated	Overall Dims, w x d x h, mm	Int Dims, w x d x h, mm	List Price, €	Offer Price, €
B2B8278T	1.5	No	180 x 160 x 190	150 x 140 x 100	452.00	305.00
B2B8280T	1.5	Yes	180 x 160 x 190	150 x 140 x 100	528.00	357.00
B2B8282T	2.5	No	270 x 170 x 210	240 x 140 x 100	576.00	391.00
B2B8284T	2.5	Yes	270 x 170 x 210	240 x 140 x 100	666.00	431.00
B2B8286T	4.5	Yes	330 x 180 x 275	300 x 150 x 150	1182.00	851.00
B2B8288T	13	Yes	375 x 345 x 275	330 x 300 x 150	1496.00	1087.00
B2B8290T	25	Yes	550 x 345 x 365	500 x 300 x 200	2014.00	1374.00

SLS Lab Pro S500 Mini Recirculating Chiller

2 YEARS



With a sophisticated touchscreen controller and 500W cooling power the S500 Mini is ideal for many laboratory applications. Built to save space, the Mini is about the size of the average desktop PC.

35% OFF



- Touchscreen interface
- Variable speed compressor and fan
- Whisper quiet
- Continual adjustment of refrigerant mass flow rate to control duty
- USB port for downloading system data

Code	Temp Range, °C	Cooling Capacity, kW	Flow Rate, L/min	List Price, €	Offer Price, €
B2B06404T	-10 to +60	0.5	3.5	7018.00	4594.00



SLS Lab Pro PURA-Q Type 2 and 3 Water Purification Systems

1 YEAR



SLS Lab Pro water purification system available in two water quality versions:

UP TO
40% OFF



Type 3 – Primary grade water (reverse osmosis) suitable for glass washers, autoclave feed, stability chambers and steam/humidity generators.

Type 2 – General laboratory grade water (deionisation) for buffer, reagent and media preparation, sample dilution, general chemistry and teaching applications.

- Low cost, one box solution
 - Unique disposable RO maintains peak efficiency
 - Built-in 35L reservoir
 - Wall or bench mounted
 - Consumables changed in seconds
 - Mercury free UV
 - Energy consumption <60W
- Installation service available - please enquire

Code	Model	Make Up Rate, L/hr	List Price, €	Offer Price, €
B2B7316T	Choice 10 type 2 (DI)	10	6364.00	3916.00
B2B7074T	Choice 10 type 2 (DI) UV	10	6807.00	4226.00
B2B7072T	Choice 10 type 3 (RO)	10	5243.00	3220.00
B2B7314T	Choice 10 type 3 (RO) UV	10	5988.00	3565.00
B2B06262T	Choice 20 type 2 (DI)	20	6402.00	4226.00
B2B06264T	Choice 20 type 2 (DI) UV	20	7547.00	4543.00
B2B06258T	Choice 20 type 3 (RO)	20	5962.00	3726.00
B2B06260T	Choice 20 type 3 (RO) UV	20	6492.00	4025.00

PEAK Scientific Precision Hydrogen Gas Generators

2 YEARS

10% OFF

The smallest hydrogen generator for GC-FID, the Precision SL is safe, simple to use, easy to maintain and takes up minimal bench space.

- 99.9995% purity @ 100 psi
- Optional auto-water fill or pressurised water fill
- Auto-shutdown fail-safe feature
- One-button start-up and shutdown



Code	Max Flow Rate, cc/min	Water Fill	Colour	List Price, €	Offer Price, €
B2B2804	100	Automatic	Black	6050.00	5429.00
B2B2806	100	Automatic	White	6050.00	5429.00
B2B2808	100	Manual	Black	5725.00	5129.00
B2B2810	100	Manual	White	5725.00	5129.00
B2B2194	200	Automatic	Black	6700.00	5995.00
B2B2196	200	Automatic	White	6700.00	5995.00
B2B2198	200	Manual	Black	6440.00	5787.00
B2B2200	200	Manual	White	6440.00	5787.00

Accuris SmartDrop™ X Nano Spectrophotometer

2 YEARS

Benchmark
Scientific

The Accuris SmartDrop™ series of nano spectrophotometers provides quick and easy quantification of small samples (0.5 to 2.0µL), eliminating the need for dilutions and providing more accurate results. A full colour, 7" touchscreen with pre-programmed protocols gets users up and running quickly.

In addition to nucleic acid and protein calculations, the software has preset programs for BCA, Bradford and Lowry assays. A full spectrum analysis can be performed in about 6 seconds, aiding in the identification of unknowns.

- Full-spectrum absorbance scans from 200 to 800nm
- Long-life Xenon lamp with precision monochromator
- Detect up to 4,500 ng/µL of dsDNA without dilution
- Resulting data can be printed, saved in the onboard memory or exported via USB

43%
OFF



Code	Dims, w x d x h, mm	Absorbance Range, A	Wavelength Range, nm	List Price, €	Offer Price, €
B2B1482	210 x 268 x 181	0.04 to 90	200 to 800	17086.00	9715.00

Haier Biomedical Spectrophotometers

1 YEAR

Haier Biomedical
Intelligent Protection of Life Science

Ideal for routine absorbance measurements, these compact models feature automatic wavelength setting, quick standard curve generation, and large LCD displays.

- 2.5" high-definition LCD display: standard curves and test results are clearly displayed
- High quality tungsten and deuterium lamps: longer service life and lower stray light for higher photometric accuracy
- Quick to establish standard curve and measure unknown samples
- Easy data output by USB or parallel port

UP TO
33%
OFF



Code	Model	Wavelength Range, nm	Wavelength Accuracy, nm	List Price, €	Offer Price, €
B2B2712	HUV-5100	190 to 1000nm	±2nm	3450.00	2070.00
B2B2714	HUV-5800	190 to 1100nm	±0.5nm	4600.00	2760.00
B2B2716	HV-5800	320 to 1100nm	±0.5nm	3450.00	2070.00



NEW Thermo Scientific™ TSE Series Laboratory Refrigerators and Freezers

Cold storage essentials, built for ease-of-use and reliability
Speak to a sales representative for information



NEW Thermo Scientific™ FluidEase™ ClipTip™ Electronic Pipette

Intuitive design, index-finger operation and large touchscreen
Request a demo via a sales representative



Thermo Scientific™ Nunc™ Serological Pipettes

Quality serological pipettes to support each stage of cell culture research
Request a sample via a sales representative



Thermo Scientific™ Nunc™ Conical Sterile Polypropylene Centrifuge Tubes

High-quality conical tubes offering increased traceability and a large writing area
Request a sample via a sales representative

thermo scientific

Intended use of the products mentioned on this page varies. For specific intended use statements, please refer to the product label. © 2026 Thermo Fisher Scientific Inc. All rights reserved. All trademarks are the property of Thermo Fisher Scientific and its subsidiaries unless otherwise specified. We hereby disclose that this email communication is for commercial purposes. PTA-13474501 0226

Esco® Airstream G3 Class II Biological Safety Cabinets

3 YEARS

32% OFF

ESCO
LIFE SCIENCES GROUP

The Esco Airstream® G3 Class II Biological Safety Cabinet (AC2) is an effective solution in providing operator, product and environmental protection. It also features stable and self-compensating airflow, despite building voltage fluctuations & filter loading. Certified to EN 12469, the AC2 also has antimicrobial coating on all its external and internal painted surfaces for improved safety.

- Sentinel™ Gold Microprocessor Control system
- Energy-efficient DC-ECM blower with 70% energy savings compared to AC motor
- ULPA filter with 10 x filtration efficiency compared to HEPA filter
- Frameless, shatterproof sash is easier to clean, offers larger, unobstructed viewing area
- Choice of tempered glass (E-series) or stainless steel side walls (S-series)
- **Package includes:** cabinet, UV lamp, plug sockets and support stand worth up to €1094!

These items may incur an additional delivery charge



Code	Model	Size	List Price, €	Offer Price, €
B2B2618	AC2-2E8 (E-series)	2ft/0.6m	7399.00	5031.00
B2B2620	AC2-2S8 (S-series)	2ft/0.6m	8064.00	5483.00
B2B2622	AC2-3E8 (E-series)	3ft/0.9m	8702.00	5918.00
B2B2624	AC2-3S8 (S-series)	3ft/0.9m	9275.00	6307.00
B2B2626	AC2-4E8 (E-series)	4ft/1.2m	8702.00	5918.00
B2B2628	AC2-4S8 (S-series)	4ft/1.2m	9275.00	6307.00
B2B2630	AC2-5E8 (E-series)	5ft/1.5m	12159.00	8269.00
B2B2632	AC2-5S8 (S-series)	5ft/1.5m	12754.00	8672.00
B2B2634	AC2-6E8 (E-series)	6ft/1.8m	12159.00	8269.00
B2B2636	AC2-6S8 (S-series)	6ft/1.8m	12754.00	8672.00

Thermo Scientific™ BB15 CO₂ Incubators

2 YEARS

thermo
scientific

The Thermo Scientific™ BB15 CO₂ incubator provides everything you need for the good growth of cell and tissue cultures. The chamber has been designed for a less contamination-prone surface (up to 50% less surface) than other incubators.

- Precise temperature and CO₂ control for optimal growth conditions
- Powerful humidification system for short recovery times
- Choice of stainless steel or solid copper interior for permanent contamination control

35% OFF



Code	Description	List Price, €	Offer Price, €
B2B2898	Stainless steel	8464.00	5502.00
B2B2900	Copper	11022.00	7165.00

SLS Lab Pro Statebourne Biorack Storage Refrigerators

5 YEARS

LAB PRO

In partnership with
STATEBOURNE
cryogenics



Highly efficient storage of bulk quantities of cryovials. Racking systems housed within these ultra low loss cryogenic refrigerators enable users to store large quantities of biomedical material over long periods of time, safe in the knowledge that storage temperatures even in the vapour phase, will be below -190°C.

- Advanced super insulation and ultra high vacuum techniques allow storage times between refills of up to 6 months
- Ultra-low evaporative losses
- Compatible with all major cryobox brands
- Heavy duty lockable enclosure offers excellent security
- Storage of 96 well plates, straws, 5mL tubes, blood bags, canes and cord blood bags

Supplied with racks, cryoboxes and FREE roller base - worth up to €826!

These items may incur an additional delivery charge

UP TO
35% OFF



Code	Model	Supplied with	List Price, €	Offer Price, €
B2B8360	Biorack 750	5 x racks, 30 x 5 x 5 cryoboxes	4200.00	2749.00
B2B8362	Biorack 3000	6 x racks, 30 x 10 x 10 cryoboxes	6386.00	4364.00
B2B8364	Biorack 4800	6 x racks, 48 x 10 x 10 cryoboxes	7990.00	5422.00
B2B8366	Biorack 6000	6 x racks, 60 x 10 x 10 cryoboxes	8579.00	5831.00

Azenta Life Sciences Ziath Mirage Connect Tube Rack Reader

AZENTA
LIFE SCIENCES

The first and only fully networked camera-based reader on the market, equipped with Cryoprotection™, a special proprietary coating that eliminates the condensation and ensures uninterrupted reading. With high-resolution imaging and plug-and-play RJ45 connectivity, it ensures fast, reliable sample ID - even in frozen conditions.

- Cryo-optimised design reduces fogging and protects frozen samples
- 16 MP imaging sensor ensures precise and fast tube reads
- Wide labware compatibility & robotics friendly

20% OFF



Code	List Price, €	Offer Price, €
B2B3020	7311.00	5872.00

BECAUSE EVERY SAMPLE AND EVERY MOMENT MATTERS.

- FluidX™ Sample Tubes & Instruments
- Ziath Tube & Rack Code Reading Systems
- 4titude PCR Microplates & Instruments
- FreezerPro® Inventory Management Software
- Automated Storage & Cryogenics



Explore Solutions & Offers at scientificlabs.ie

Recapture time for scientific discovery

Reduce footprint & increase capacity

Eliminate manual, error-prone processes

Scale throughput with precision

Increase data quality

Protect sample integrity

Ensure cold chain management

Mitigate risk & ensure compliance

Drive reproducibility

Haier Biomedical Laboratory Refrigerators and Freezers

2 YEARS

Haier Biomedical
Intelligent Protection of Life Science

Reliable, energy-efficient and environmentally friendly refrigeration. Featuring microprocessor controller, LED display with battery backup, alarm functions and locks as standard.

- Efficient low noise hydrocarbon (HC) compressor, with low power consumption
- Completely green refrigeration solution
- High density foam insulation for rigidity and stable storage temperature within 3°C
- Secure and safe, suitable for multiple users

UP TO
33% OFF



These items may incur an additional delivery charge

Code	Capacity, L	Temp Range, °C	Dims, w x d x h, mm	Sparkfree	List Price, €	Offer Price, €
B2B7298	92	-10 to -25	640 x 610 x 810	No	1342.00	992.00
B2B7296	262	-10 to -25	700 x 705 x 1665	No	2647.00	1797.00
B2B7292	310	+3 to +16	605 x 598 x 1840	No	1917.00	1293.00

SLS Lab Pro Hydron Benchtop pH Meter

3 YEARS



A reliable and economical benchtop meter for routine measurements of pH, mV and temperature. Featuring five-point calibration with auto-buffer recognition, automatic temperature compensation (ATC) and datalogging capabilities for the storage and recall of up to 100 data sets, the Hydron is well suited to routine applications across academic laboratories, industrial settings and education. A compact footprint, large easy-to-read display and splash-proof keyboard also make it user-friendly and space saving for the busy workspace.

38% OFF



- Measures pH, mV, relative mV, and temperature
- Automatic temperature compensation (ATC) - Requires optional temperature probe (not supplied)
- Non-skid pads hold meter steady during operation
- Large dual LCD display
- Integral electrode holder
- Hold function and stability indicator
- Supplied with pH electrode and arm

Code	Dims, w x d x h, mm	List Price, €	Offer Price, €
B2B9376T	155 x 175 x 69	654.00	408.00

Thermo Scientific™ TSE Series Refrigerators and Freezers

2 YEARS



thermo scientific



When your research depends on reliable cold storage, the equipment you choose matters. Thermo Scientific™ TSE Series laboratory refrigerators and freezers deliver dependable performance, intuitive operation, and the essential features today's labs need, all at a budget-friendly price. Designed specifically for research environments, the TSE Series provides consistent temperature performance and everyday reliability you can trust.

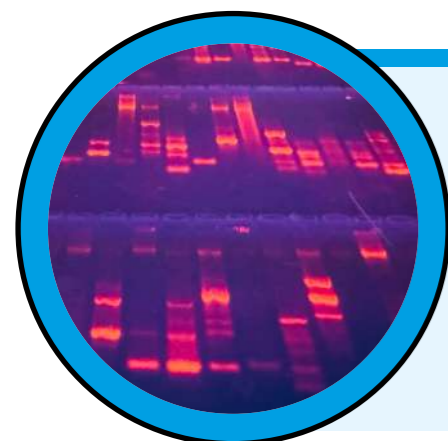
- Modern digital controller with clear, easy-to-read display
- Quick access to temperature setpoints and alarm settings
- Minimal maintenance to reduce downtime
- SNAP and F-Gas compliant hydrocarbon refrigerants

30% OFF



These items may incur an additional delivery charge

Code	Capacity, L	Temp Range, °C	Type	Door Style	List Price, €	Offer Price, €
B2B2834	77	+1 to +10	Underbench	Glass	2018.00	1413.00
B2B2836	77	+1 to +10	Underbench	Solid	1755.00	1228.00
B2B2838	77	-15 to -25	Underbench	Solid	1686.00	1180.00
B2B2840	77/77	+1 to +10/ -15 to -25	Upright combo	Glass/solid	3704.00	2593.00
B2B2842	77/77	+1 to +10/ -15 to -25	Upright combo	Solid	3221.00	2255.00
B2B2844	266	+1 to +10	Upright	Glass	2439.00	1708.00
B2B2846	266	+1 to +10	Upright	Solid	2146.00	1502.00
B2B2848	266	-15 to -25	Upright	Solid	2537.00	1776.00
B2B2850	564	+1 to +10	Upright	Glass	3255.00	2278.00
B2B2852	564	+1 to +10	Upright	Solid	2830.00	1981.00
B2B2854	564	-15 to -25	Upright	Solid	3220.00	2254.00



SLS Flowgen Electrophoresis Agarose

Supplied in packs of 500g

Code	Description	List Price, €	Offer Price, €
B2B2302T	Low EEO agarose	253.00	121.00
B2B2304T	Standard agarose	230.00	109.00

SLS Flowgen multiSUB Mini Horizontal Electrophoresis Systems

2 YEARS



The multiSUB Mini is the smallest multiSUB in the range and ideal for routine molecular biology applications. The small gel size maximises run economy but does not compromise versatility as two tray options are available. Simply by altering the gel tray or comb, this compact unit is capable of resolving up to 64 different samples, prepping 1mL of sample or separating sample bands over a distance of 9cm.

- Available with 7 x 7cm, 7 x 10cm or with both gel trays
- Economic low gel and buffer volumes
- Small lab bench footprint
- Complete with sample combs, loading guides and dams



UP TO 30% OFF

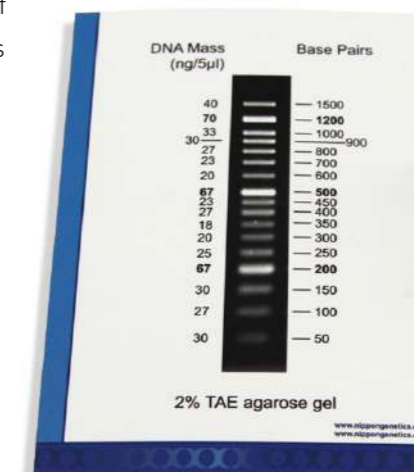
Code	Gel Dims, w x l, mm	List Price, €	Offer Price, €
B2B1380	70 x 70	432.00	304.00
B2B1382	70 x 100	431.00	304.00
B2B1384	70 x 70 or 70 x 100	461.00	329.00

NIPPON Genetics FastGene® DNA Markers



DNA ladders and markers are important tools for the determination of size and concentration of DNA fragments. The FastGene® DNA ladders are optimised for different applications: 1) for most accurate discrimination of small products (MWD50), 2) as perfect ladder for everyday use (MWD100), 3) or for very large products and fragments (MWD1P).

- Sharp and well defined DNA bands
- Ready-to-use and mixed already with a loading dye



UP TO 36% OFF

Code	Description	List Price, €	Offer Price, €
B2B1164T	MWD50 50bp DNA marker	53.00	34.00
B2B1162T	MWD100 100bp DNA marker	52.00	35.30
B2B1160T	MWD1P 1kb DNA marker	43.10	28.90

NIPPON Genetics FastGene® Plasmid Mini Kits

NIPPON Genetics EUROPE
INNOVATION FOR YOU

FastGene® Plasmid Mini Kits are designed for rapid small scale isolation and purification of high copy and low copy plasmid DNA. The ready-to-use plasmid DNA is of high quality in low-salt Tris buffer and suitable for typical downstream applications: cloning, sequencing, PCR, transformation and restriction analysis. The kit includes everything that is needed for a plasmid preparation.

- Rapid small scale isolation and purification
- High yields of plasmid DNA
- Cost effective preparations

UP TO
30% OFF



Code	Pack	List Price, €	Offer Price, €
B2B1104T	100 preparations	156.00	109.00
B2B1106T	300 preparations	377.00	266.00

NIPPON Genetics MIDORIGreen DNA/RNA Stains

NIPPON Genetics EUROPE
INNOVATION FOR YOU

MIDORIGreen dyes offers a perfect solution for different staining preparation or gel documentation conditions. Non-carcinogenic and non-toxic, MIDORIGreen is a safe alternative to the traditional nucleic acid stain ethidium bromide.

- Advance: For detecting dsDNA, ssDNA and RNA in agarose gels with a very high sensitivity. For in-gel staining and post staining. Optimal for UV light
- Xtra: Ultra-sensitive DNA stain for the detection of DNA/RNA in agarose gels. For in-gel staining and post staining. Optimal for blue/green LED technology and blue LED light
- Direct: In-sample staining for the strongest signal. Added directly to your samples, with the loading dye already included. No other reagents need to be added. Developed for visible light, and the best signal quality can be achieved with blue/green LED technology

UP TO
32% OFF



Code	Description	Pack	List Price, €	Offer Price, €
B2B1132T	MIDORIGreen Advance	1mL (25000x for staining 25L of agarose)	100.00	72.00
B2B1134T	MIDORIGreen Direct	1mL (25000x for staining 25L of agarose)	104.00	74.00
B2B1136T	MIDORIGreen Xtra	1mL (10x for direct use in sample)	118.00	81.00

Benchmark BenchMixer™ MP

2 YEARS

Benchmark Scientific

The BenchMixer™ MP is optimally designed to provide thorough mixing in a variety of commonly used sample vessels. With included holders for tubes and plates, as well as a cup head for pressurised/touch vortexing, the BenchMixer™ MP is a complete package designed to meet the mixing needs of any laboratory.

- Accepts a wide range of microplates, including deep well, PCR, ELISA plates, etc.
- Includes tube accessories for vortexing of 1.5/2.0mL, 15mL, or 50mL tubes
- Converts to a traditional "touch" mode vortexer with included cup head attachment



45% OFF

Code	Dims, w x d x h, mm	Speed Range, RPM	List Price, €	Offer Price, €
B2B1672	134 x 226 x 55	200 to 3000	608.00	337.00

Meridian Bioscience PCR Kits

meridian BIOSCIENCE
LIFE RESEARCH LIFE ENHANCED

High quality PCR reagents from Meridian Bioscience. MyTaq™ HS DNA Polymerase is a high performance PCR product powered by antibody mediated hot-start, specifically designed for fast, highly-specific, hot-start PCR. The SensiFAST™ ROX kits have been developed for fast, highly reproducible real-time PCR and have been validated on all commonly used real-time instruments.

- Fast PCR reactions
- High specificity
- Optimised buffer system

UP TO
53% OFF



Code	Description	Pack	List Price, €	Offer Price, €
B2B2756	MyTaq HS DNA Polymerase	250 units	174.00	99.00
B2B2758	MyTaq HS Red DNA Polymerase	1000 units	552.00	317.00
B2B2760	SensiFAST Probe Lo-ROX kit	500 reactions	340.00	206.00
B2B2762	SensiFAST Probe No-ROX kit	500 reactions	334.00	202.00
B2B2764	SensiFAST SYBR Lo-ROX kit	500 reactions	361.00	169.00
B2B2766	SensiFAST SYBR No-ROX kit	500 reactions	338.00	201.00

SLS Lab Pro Insulated Eco Drying Cabinets



SLS Lab Pro eco drying cabinets are designed with energy efficiency in mind, utilising thermal insulation and a user programmable digital control, for drying laboratory glassware, surgical instruments or media.

- Energy saving thermal insulation to 5 sides
- Low power consumption
- Easy accessible control system
- Digital temperature controller featuring a 5-inch full colour, touch screen display
- Digital 7 day 24hr timer
- Economical to run / lower running costs
- Dual circulating fans and easy roll mounting wheels on floor standing units
- Corrosion free stainless steel internal chamber
- Anti-microbial powder coat paint to external surfaces
- Temperature range of 30 to 80°C

These items may incur an additional delivery charge

UP TO
40% OFF



Code	Type	Capacity, L	Air Flow	Door Style	Dims, w x d x h, mm	Energy Consumption, kWh/24hr*	List Price, €	Offer Price, €
B2B06326T	Bench	113	Static	Sliding	765 x 455 x 775	6.840	3271.00	2438.00
B2B06324T	Bench	227	Static	Sliding	1000 x 550 x 845	7.968	3692.00	2869.00
B2B06328T	Floor standing	426	Fan-assisted	Hinged	660 x 710 x 1870	13.920	7642.00	4686.00
B2B06330T	Floor standing	885	Fan-assisted	Hinged	1168 x 790 x 1870	18.960	10674.00	6440.00

*at 70°C setpoint



Plastic Tray Trolleys

- Lightweight and ergonomic
- Supplied with precision bearing castors including 2 brakes
- Heavy duty construction from high quality, nylon fibre blended polymers

UP TO
30% OFF

Code	No. of Shelves	Dims, x d x h, mm	Platform Dims, mm	Max Load, kg	List Price, €	Offer Price, €
B2B06076T	3	460 x 750 x 980	630 x 424	150	220.00	159.00
B2B06078T	2	460 x 750 x 940	630 x 424	100	188.00	131.00
B2B06080T	2	513 x 990 x 970	866 x 500	250	390.00	273.00

HPLC Chemicals and Solvents

A range of chemicals, reagents and solvents suitable for use with HPLC/LC-MS applications.

See the SLS website for more offers!

GREAT SAVINGS!



Merck Supelco® LiChropur™

Supelco®
Analytical Products

Code	Description	Pack	List Price, €	Offer Price, €
B2B1258T	Acetic acid, 100% for LC-MS, LiChropur	50mL	102.00	74.00
B2B1256T	Ammonia solution, 25% for LC-MS, LiChropur	50mL	98.00	71.00
B2B1272T	Ammonium acetate, for LC-MS, LiChropur	50g	222.00	161.00
B2B1262T	Ammonium dihydrogen phosphate, for HPLC, LiChropur	250g	277.00	201.00
B2B1250T	Formic acid, 98% - 100% for LC-MS, LiChropur	50mL	208.00	151.00
B2B1264T	Formic acid, 98% - 100% for LC-MS, LiChropur	100mL	141.00	102.00
B2B1266T	Formic acid, 98% - 100% for LC-MS, LiChropur	250mL	331.00	240.00
B2B1252T	Ortho-phosphoric acid, 85% for HPLC, LiChropur	100mL	130.00	94.00
B2B1254T	Ortho-phosphoric acid, 85% for HPLC, LiChropur	250mL	253.00	183.00
B2B1260T	Potassium dihydrogen phosphate, for HPLC, LiChropur	250g	449.00	325.00
B2B1270T	Sodium dihydrogen phosphate anhydrous, for HPLC, LiChropur	250g	308.00	223.00
B2B1268T	Triethylammonium acetate buffer, for HPLC, 0.98 - 1.02M, LiChropur	1L	672.00	486.00

Solstice CHROMASOLV™

Solstice

Code	Description	Pack	List Price, €	Offer Price, €
B2B3032	Acetone, for HPLC greater than or equal to 99.8%, CHROMASOLV	2.5L	52.00	24.50
B2B3028	Acetonitrile, for LC-MS, CHROMASOLV	2.5L	415.00	37.30
B2B3026	Acetonitrile, gradient grade for HPLC greater than or equal to 99.9%, CHROMASOLV	2.5L	212.00	22.80
B2B3062	Ethanol (taxed) for HPLC absolute greater than or equal to 99.8%, CHROMASOLV	2.5L	299.00	25.90
B2B3030	Hexane, for HPLC greater than or equal to 97.0% (GC), CHROMASOLV	2.5L	204.00	28.20
B2B3034	Methanol, for LC-MS, CHROMASOLV	2.5L	87.00	11.66
B2B3038	Methanol, for HPLC greater than or equal to 99.9%, CHROMASOLV	2.5L	54.00	9.94
B2B3054	Methanol, gradient grade for HPLC greater than or equal to 99.9%, CHROMASOLV	2.5L	40.60	13.94
B2B3040	2-Propanol, for HPLC 99.9%, CHROMASOLV	2.5L	84.00	20.60
B2B3036	Water, for HPLC, CHROMASOLV Plus	2.5L	53.00	20.20



**SCIENTIFIC
LABORATORY
SUPPLIES**

2
0
2
6



**40%
OFF**

**33%
OFF**



UP TO
**28%
OFF**



Northern Ireland	+44 (0)28 9262 1100
Republic of Ireland	+353 (0)1 4069 464
England & Wales	+44 (0)115 982 1111
Scotland	+44 (0)123 643 1857
International	+44 (0)115 977 5060
East Africa	+254 (0)728 156294

**BACK ²
BASICS**

www.scientificlabs.ie