



## Seward Stomacher® 400 Circulator

seward  
World leaders in sample preparation

The Stomacher® 400 Circulator allows for easy and effective processing of multiple samples, without the risk of cross contamination. The unique patented paddle design improves organism recovery by enhancing the stirring and extrusion forces applied to the sample so driving more organisms into suspension for analysis.

- Improved organism recovery with the patented curved shape of the Circulator paddles over older square paddle designs
- No risk of cross contamination between samples
- Durable and reliable
- Control panel with programmable settings or 'hands free' auto run
- Countdown of processing time
- Removable door for easy cleaning of paddle chamber

| Code    | Alt Ref     | Description               | Price    |
|---------|-------------|---------------------------|----------|
| MIX3011 | 0400/001/UK | Stomacher® 400 Circulator | £3195.00 |

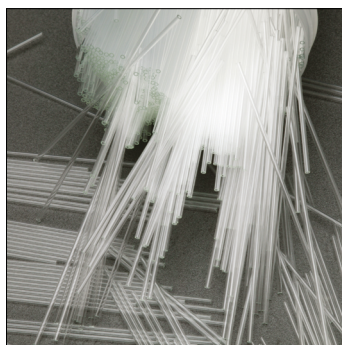


## SLS Select Blender Bags



- Ideal for use in any blender
- Double size (4mm) seal ensures all faults are totally visible, giving the added security of no leakage
- Tested in production at eight times the normal usage
- Gamma irradiated
- Standard bags are made from irradiated virgin food grade polythene
- Eco bags are manufactured from a new polymer which gives the bag the same strength as a standard bag, whilst being over 20% thinner
- Curved bags have a curved lower seal for Circulator® machines
- Strainer bags have a full width filter suspended inside with a mesh size guaranteed to allow the free movement of organisms through it, whilst stopping debris and fat through, making it easier to pipette the sample for testing

| Code    | Description     | For use with             | Thickness, µm | Dims, w x l, mm | Pack | Price   |
|---------|-----------------|--------------------------|---------------|-----------------|------|---------|
| SLS3100 | Standard        | 80mL models              | 65            | 100 x 150       | 2000 | £79.00  |
| SLS3102 | Standard        | 400mL models             | 65            | 180 x 300       | 500  | £72.00  |
| SLS3104 | Standard        | 3500mL models            | 70            | 380 x 500       | 250  | £113.00 |
| SLS3103 | Curved          | 400mL circulator® models | 65            | 180 x 300       | 500  | £71.00  |
| SLS3108 | Strainer        | 400mL models             | 65            | 180 x 300       | 200  | £112.00 |
| SLS3109 | Strainer curved | 400mL circulator® models | 65            | 180 x 300       | 200  | £100.00 |
| SLS4102 | Eco             | 400mL models             | 50            | 180 x 300       | 2500 | £208.00 |



## SLS Select Pipette Straws



- Disposable pipette straws, specifically designed for use with the SLS Select range of blender bags
- Sterile
- Unbreakable and eliminate the hazard of broken glass
- Avoid exposure to infectious materials and contaminating samples

Supplied in packs of 2000

| Code    | Colour    | Length, mm | Price  |
|---------|-----------|------------|--------|
| SLS3112 | Blue tint | 180        | £98.00 |
| SLS3114 | Clear     | 190        | £89.00 |