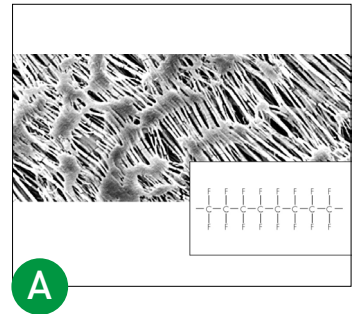


## Sartorius Hydrophobic PTFE Membrane Filters

SARTORIUS

The main application of these membrane filters is the filtration of air, gases or chemicals. They are made of PTFE (polytetrafluoroethylene) only and are therefore permanently hydrophobic. Unlike other (hydrophilic) filter types, they are not wetted by air humidity, allowing unhindered passage of air at low differential pressures as well.

- Excellent chemical compatibility (pH 1 - 14), so that they are also used for the filtration of solvents and acids, to which other filter types are not resistant
- Must be pre-wetted with ethanol or methanol before the filtration of aqueous media



Code	Type	Pore Size, $\mu\text{m}$	$\varnothing$ , mm	Thickness, $\mu\text{m}$	Bubble Point, bar	Isopropanol Flow Rate, mL/min/ $\text{cm}^2$ /bar	Pack	Price
<b>FIL1518</b>	11807	0.2	25	65	1.4	11	100	£303.00
<b>FIL1520</b>	11807	0.2	47	65	1.4	11	100	£379.00
<b>FIL1522</b>	11807	0.2	50	65	1.4	11	100	£382.00
<b>FIL1530</b>	11806	0.45	25	80	0.9	20	100	£310.00
<b>FIL1534</b>	11806	0.45	47	80	0.9	20	100	£387.00
<b>FIL1536</b>	11806	0.45	50	80	0.9	20	100	£382.00
<b>FIL1544</b>	11803	1.2	25	100	0.45	80	100	£354.00
<b>FIL1546</b>	11803	1.2	47	100	0.45	80	100	£442.00
<b>FIL1548</b>	11803	1.2	50	100	0.45	80	100	£448.00
<b>FIL1550</b>	11803	1.2	90	100	0.45	80	25	£334.00
<b>FIL1552</b>	11803	1.2	100	100	0.45	80	25	£431.00
<b>FIL1554</b>	11842	5	25	100	0.10	250	100	£354.00
<b>FIL1556</b>	11842	5	42	100	0.10	250	100	£431.00
<b>FIL1558</b>	11842	5	47	100	0.10	250	100	£435.00
<b>FIL1560</b>	11842	5	50	100	0.10	250	100	£448.00

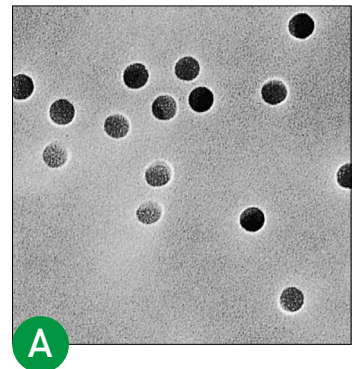
Other diameters are available on request

## Sartorius Polycarbonate Track-Etched Membrane Filters

SARTORIUS

White, hydrophilic polycarbonate track-etch-membranes manufactured from high grade polycarbonate film using track-etch technology. Capillary pore structure is uniform and precise, with a narrow pore size distribution to retain particles on the surface.

- Main applications are particulate analysis, epifluorescence microscopy, fluid clarification, cytology, cell biology, bioassays, water microbiology and environmental analysis
- An excellent choice for accurate fractionation of particulates because of their precise pore size
- Track-etch technology offers the user distinct performance advantages when excellent surface capture and high sample visibility are required
- Thickness: 25 $\mu\text{m}$
- Burst pressure:  $\geq 0.7$  bar



Supplied in packs of 100

Code	Type	Pore Size, $\mu\text{m}$	$\varnothing$ , mm	Bubble Point, bar	Water Flow Rate, mL/min/ $\text{cm}^2$ /0.7 bar	Price
<b>FIL1564</b>	23007	0.2	25	4.8	$\geq 10$	£94.00
<b>FIL1566</b>	23007	0.2	47	4.8	$\geq 10$	£132.00
<b>FIL1568</b>	23007	0.2	50	4.8	$\geq 10$	£136.00
<b>FIL1570</b>	23006	0.45	25	2.5	$\geq 30$	£94.00
<b>FIL1572</b>	23006	0.45	47	2.5	$\geq 30$	£132.00